

NEWS RELEASE

Release Time IMMEDIATE

Date 6 July 2011

AIRBORNE ELECTROMAGNETIC SURVEY TO BE FLOWN AT BULMAN LEAD-ZINC PROJECT, NORTHERN TERRITORY

Admiralty Resources NL ("**Admiralty**") announces that an airborne electromagnetic ("**EM**") survey will be flown over exploration licence 23814 which is held by its wholly owned subsidiary, Bulman Resources Pty Ltd ("**Bulman Resources**").

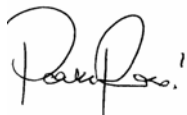
The Bulman Project is located in a similar geological setting to the world class lead-zinc-silver deposit at McArthur River which is situated 300kms to the south east of Bulman (Figure 1). As reported on 15 November 2010, independent geological consultants Geos Mining have located a new zone of zinc-lead mineralisation at Ripple Hill, approximately 12 kilometres North West of the 2008 drilled prospects.

This is a significant discovery in that it is the first geochemical anomalism to be located outside of the historical mining areas and also indicates that there is good potential for further sites of interest and mineralisation to be discovered within unexplored areas of the Bulman project area. Geos Mining considers that there is high potential for the discovery of a stratiform lead-zinc-silver deposit, similar to McArthur River, in the carbonate shelf sequence within the Bulman Resources tenements.

Geos Mining have recommended that Bulman Resources follow up this discovery during the 2011 field season with an airborne EM survey over prospective parts of the project area to detect buried lead-zinc deposits beneath the surface cover. Bulman Resources has now signed a contract with Fugro Airborne Surveys Pty Ltd ("**Fugro**") to fly the entire exploration licence 23814 with their TEMPEST™ EM system. TEMPEST™ is a time-domain electromagnetic system operated from a fixed wing aircraft which will traverse the entire tenement at a height of 100m along east-west lines spaced 200m apart. The system is designed to acquire high resolution EM data that can be used to detect the presence of buried stratiform lead-zinc-silver deposits.

The survey is expected to be flown in late July or early August 2011 with initial data available within three weeks. Bulman Resources will engage the services of a qualified geophysicist to interpret the results of the survey and identify targets for further exploration.

Yours sincerely,



Patrick Rossi
Company Secretary

Further information on Admiralty Resources NL can be found on our Internet site: www.ady.com.au

Australia

Investor Relations

Tel: +61 3 9620 7144

Email: investors@ady.com.au

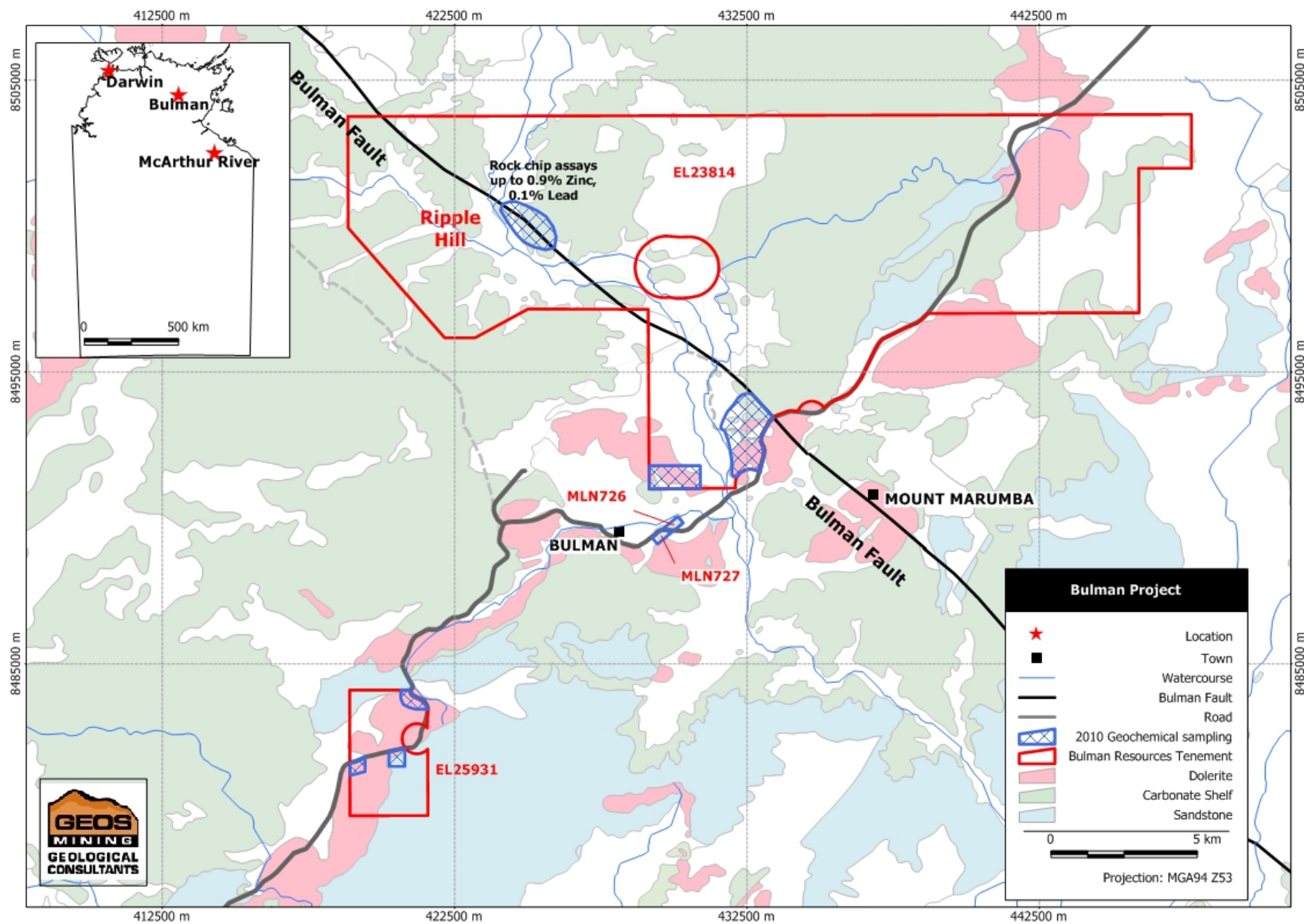


Figure 1: Bulman Project – location of 2010 reconnaissance and 2011 airborne EM survey

The information in this report that relates to Exploration Results, Mineral Resources or Ore Reserves is based on information compiled by Jeff Randell, who is a Member of the Australian Institute of Geoscientists. Mr Randell is employed by Geos Mining and has sufficient experience which is relevant to the style of mineralisation and type of deposit under consideration and to the activity which he is undertaking to qualify as a Competent Person as defined in the 2004 Edition of the 'Australasian Code for Reporting of Exploration Results, Mineral Resources and Ore Reserves'. Mr Randell consents to the inclusion in the report of the matters based on his information in the form and context in which it appears.