



288 – 292 Churchill Avenue
Subiaco WA 6008

PO Box 1281
Subiaco WA 6904
Tel: +61 8 9489 3777
Fax: +61 8 9489 3799

admin@cooperenergy.com.au
www.cooperenergy.com.au

ASX Announcement

COE171111B

Thursday 17 November 2011

Dear Shareholders,

Cooper Successfully Completes Sukananti 3D Seismic Acquisition Program in Indonesia (COE 55% and Operator)

Cooper Energy (ASX: CEO) ("Cooper" or the "Company") is pleased to announce that the 24.3 km² 3D survey over the Sukananti Block (known as the Sukananti KSO) in South Sumatra, onshore Indonesia, has been completed within budget.

The Sukananti KSO is a joint venture of Cooper Energy (55% and Operator) and Mega Adhyaksa Pratama (45%). The 3D seismic acquisition program was designed to provide enhanced structural and stratigraphic resolution across the entire block. This will be valuable in optimising the development of the current fields by delineating additional development drilling targets. The improved structural definition will also enable the evaluation of exploration targets.

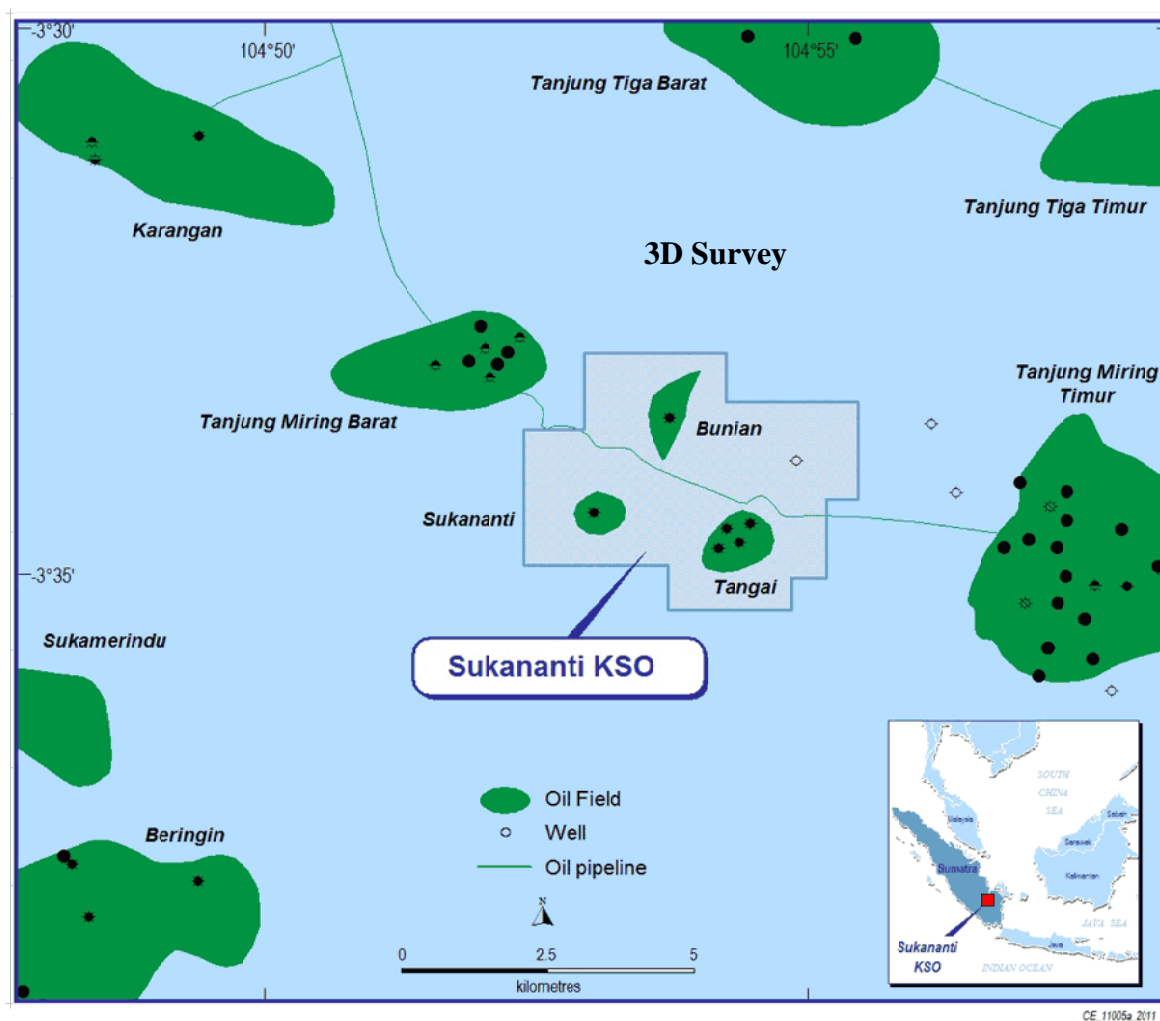
The seismic data is currently being processed by PT Fugro Indonesia in Jakarta and is expected to be available for interpretation in the first Quarter 2012.

The successful completion of the Sukananti 3D seismic survey is an important step in the future development of the Sukananti Block.

The three fields within the Sukananti Block have produced 1.08 million barrels of oil to date and Cooper has identified opportunities for further increasing the production and reserves.

Regards,
Cooper Energy Limited

David Maxwell
Managing Director



CE_11005a_2011

Disclaimer

The information in this report:

- Is not an offer or recommendation to purchase or subscribe for shares in Cooper Energy Limited or to retain or sell any shares that are currently held.
- Does not take into account the individual investment objectives or the financial situation of investors.
- Was prepared with due care and attention and is current at the date of the presentation.
- Actual results may materially vary from any forecasts (where applicable) in this report.
- Before making or varying any investment in shares of Cooper Energy Limited, all investors should consider the appropriateness of that investment in light of their individual investment objectives and financial situation and should seek professional financial advice.