

Exco – A New Growth Phase

Resources
Roadshow

April 2012



Disclaimer

This presentation contains forward looking statements that are subject to risk factors associated with resources businesses. It is believed that the expectations reflected in these statements are reasonable but they may be affected by a variety of variables and changes in underlying assumptions which could cause actual results or trends to differ materially, including but not limited to: price fluctuations, actual demand, currency fluctuations, drilling and production results, reserve estimates, loss of market, industry competition, environmental risks, physical risks, legislative, fiscal and regulatory developments, economic and financial market conditions in various countries and regions, political risks, project delay or advancement, approvals and cost estimates.

All references to dollars, cents or \$ in this presentation are to AUD currency, unless otherwise stated.

Information in this presentation relating to mineral resources and exploration results is based on data compiled by Exco's Exploration Manager Stephen Konecny and Exco's Resource Manager Ms Christine Shore who are members of The Australasian Institute of Mining and Metallurgy. Both Mr Konecny and Ms Shore have sufficient experience which is relevant to the style of mineralisation and type of deposit under consideration and to the activity which they are undertaking to qualify as Competent Persons under the 2004 Edition of the Australasian Code for reporting of Exploration Results, Mineral Resources and Ore Reserves.

Mr Konecny and Ms Shore consent to the inclusion of the data in the form and context in which it appears.

Corporate Overview

Exco Success

Cloncurry Copper Project
White Dam Gold Mine

Exco Going Forward

Exco Business & Forward Strategy
Near Term Targets
White Dam Gold Project
Queensland Exploration Strategy

Exco Strategy 2012



Corporate Overview

Capital Structure

Shares on Issue	356,044,187
Performance Rights	11,200,000
Current Share Price	0.175
Price Range (52 Wks) *dividend adjusted	\$0.175 - \$0.39*
Market Cap (Diluted)	\$64.3M
Cash	~\$59M
Debt	\$0
Enterprise Value	\$5.3M

Major Shareholders

Ivanhoe Australia	22.3%
WH Soul Pattinson & Co	13.1%
Alasdair Cooke	4.9%
Top 20	>60%

Board and Management

Executive Directors

GEOFF LAING, Managing Director
Chemical Engineer with 20 years mining experience

ALASDAIR COOKE, Executive Director
Geologist, a founder of Exco, 21 years experience

Non-Executive Directors

BARRY SULLIVAN, Non-Executive Chairman
Mining Engineer, director since 2006

PETER REEVE, Non-Executive Director
Metallurgist, CEO & MD of IVA, director since 2008

TOM WHITING, Non-Executive Director
Geophysicist, over 30 years in minerals exploration industry

Management

EAMON BYRNE, CFO & Company Secretary

BRUCE MCLARTY, General Manager - Commercial

STEVE KONECNY, Chief Geologist

DOUG COOK, Exploration Manager

Cloncurry Copper Project



Key Strengths

- Efficient Resource Development
- Targeted Project Development
- Stakeholder Relationships – DERM, DEEDI, Locals
- Negotiating Strategy with XTA (Deal with Majors)

Transaction Price - \$175M

Profit (Before Tax) - ~\$153M

Return on Equity - ~825%

White Dam Gold Mine



Key Strengths

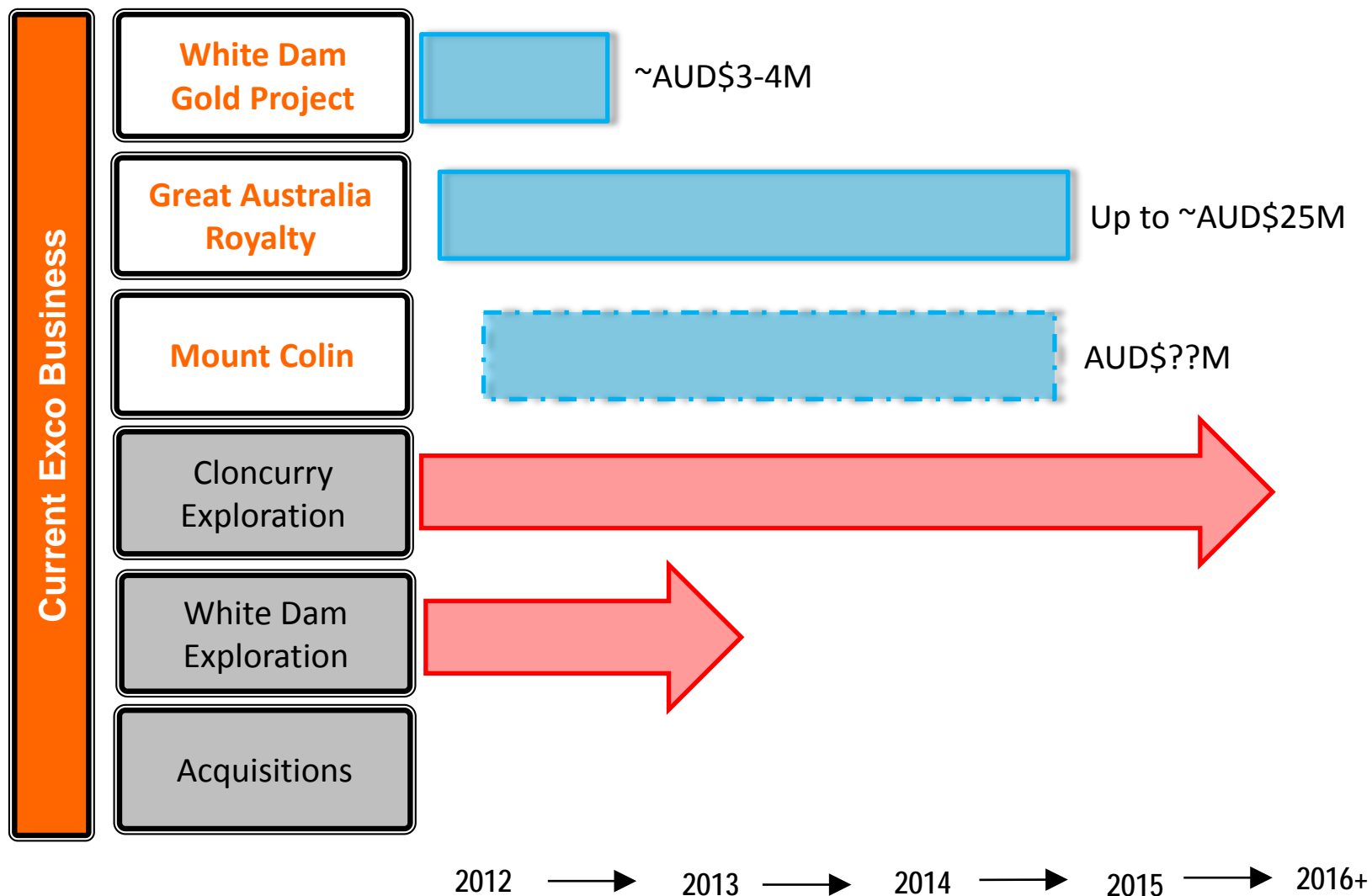
- Purchased at Low Gold Prices
- Developed through tail of GFC
- Partnerships – Polymetals & Barclays



Profit (Before Tax) - \$68M

Return on Equity - ~850%

Exco Business & Forward Strategy



Cloncurry “Near Term” Projects

Great Australia Royalty

- Exco-CopperChem entered into an alliance agreement in September 2009.
- Under the alliance:
 - Exco entitled to a royalty on 1.7 million tonnes of sulphide ore (~26,000t Cu) within the Great Australia deposit.
 - Expected gross royalty cash flows of up to ~\$25 million based on copper prices of US\$3.70/lb.
 - Operations have commenced.

Mount Colin Deposit

- Granted Mining Lease.
- Recently released updated resource estimate of 1.92Mt @ 2.59% Cu. Representing an overall mineral resource increase of 29%.
- A scoping study completed on the project has indicated robust economic potential.

Kangaroo Rat Deposit

- Granted Mining Lease.
- Resource update recently completed resulting in an inferred mineral resource total of **1.26M @ 1.29% Cu & 0.63g/t Au.**
- Diamond Drilling is also planned for metallurgical testwork, geotechnical studies and specific gravity determinations.

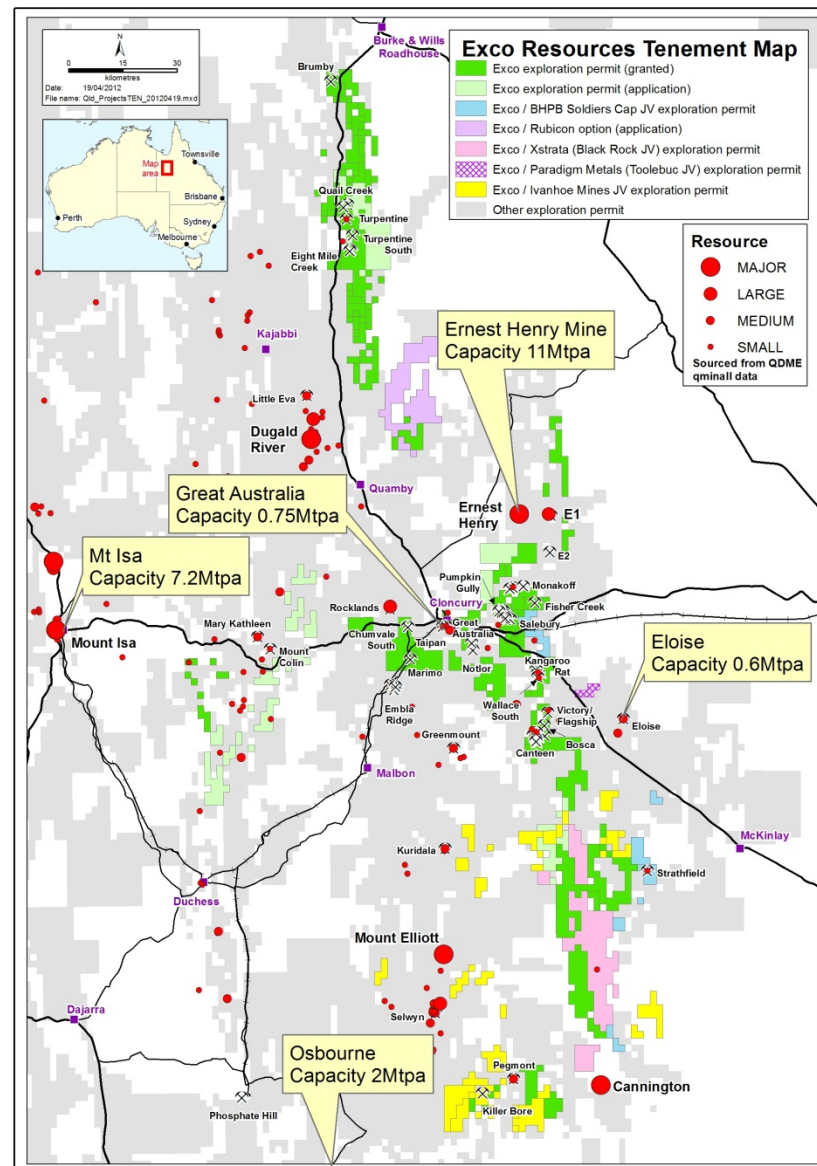
White Dam Gold Project

Vertigo & Exploration



Queensland Exploration Strategy

- Tier One - Develop larger self sustaining resources (Medium and longer term projects)
- Tier Two - Develop resources suitable for transactions with third parties within the region (Short to medium term projects)
- Rolling greenfields programme to ensure a pipeline of prospects is maintained.
- Working with JV partners on Southern Tenements to ensure exploration is in line with Exco strategy.



NW Qld Resources

EXCO RESOURCES – NORTHWEST QUEENSLAND RESOURCE SUMMARY

Deposit	Class	Tonnes	Grade		Metal	
			Cu%	Au g/t	Cu T	Au Oz
Cloncurry Project						
Great Australia ⁽¹⁾	Indicated	1,400,000	1.53	0.13	21,000	6,000
	Inferred	800,000	1.57	0.14	12,000	3,000
TOTAL		2,200,000	1.54	0.13	33,000	9,000
Mt Colin ⁽¹⁾ <i>Mt Colin resource cut-off = 1.25% Cu.</i>	Indicated	1,042,000	3.04	0.42	32,000	14,000
	Inferred	880,000	2.09	0.41	18,000	12,000
TOTAL		1,922,000	2.59	0.42	50,000	26,000
Taipan	Inferred	1,460,000	0.80	0.1	12,000	5,000
Kangaroo Rat ⁽¹⁾	Inferred	1,257,000	1.29	0.6	16,000	25,500
Wallace South <i>Wallace South resource cut-off = 0.5g/t</i>	Inferred	1,000,000	-	1.6	-	53,000
Victory-Flagship	Inferred	196,000	1.20	1.4	2,000	9,000
Sub-Total Cloncurry Project		8,053,000	1.62	0.49	113,000	127,500
Hazel Creek Project						
Turpentine	Indicated	1,627,000	1.04	0.21	17,000	11,000
	Inferred	215,000	0.9	0.16	2,000	1,000
Sub-Total Hazel Creek		1,842,000	1.03	0.2	19,000	12,000
Northwest Queensland Total		9,877,000	1.51	0.43	132,000	139,500

Notes: Discrepancies in totals are as result of rounding.

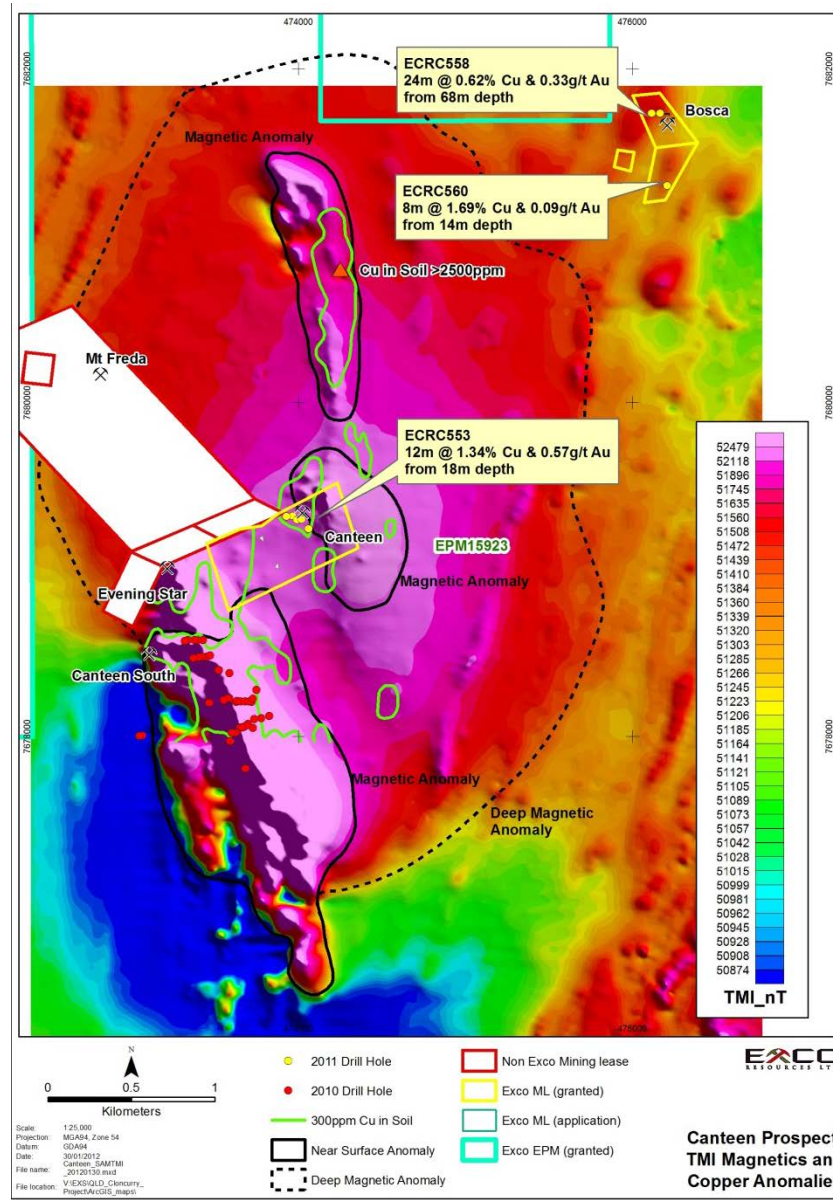
Unless otherwise stated the above resources are reported at a 0.5% Cu cut-off.

⁽¹⁾Granted Mining Lease.

Weatherly Creek – Canteen

- Recent SAM geophysical data highlights a very strong conductive anomaly and a coincident magnetic anomaly.
- Soil geochemistry has highlighted coherent copper and gold in soil.
- Exco believes the area hosts a large IOCG style alteration system.
- Initial RC drilling has intersected encouraging copper and gold grades beneath the historical Canteen Pit. Better Intercepts include:

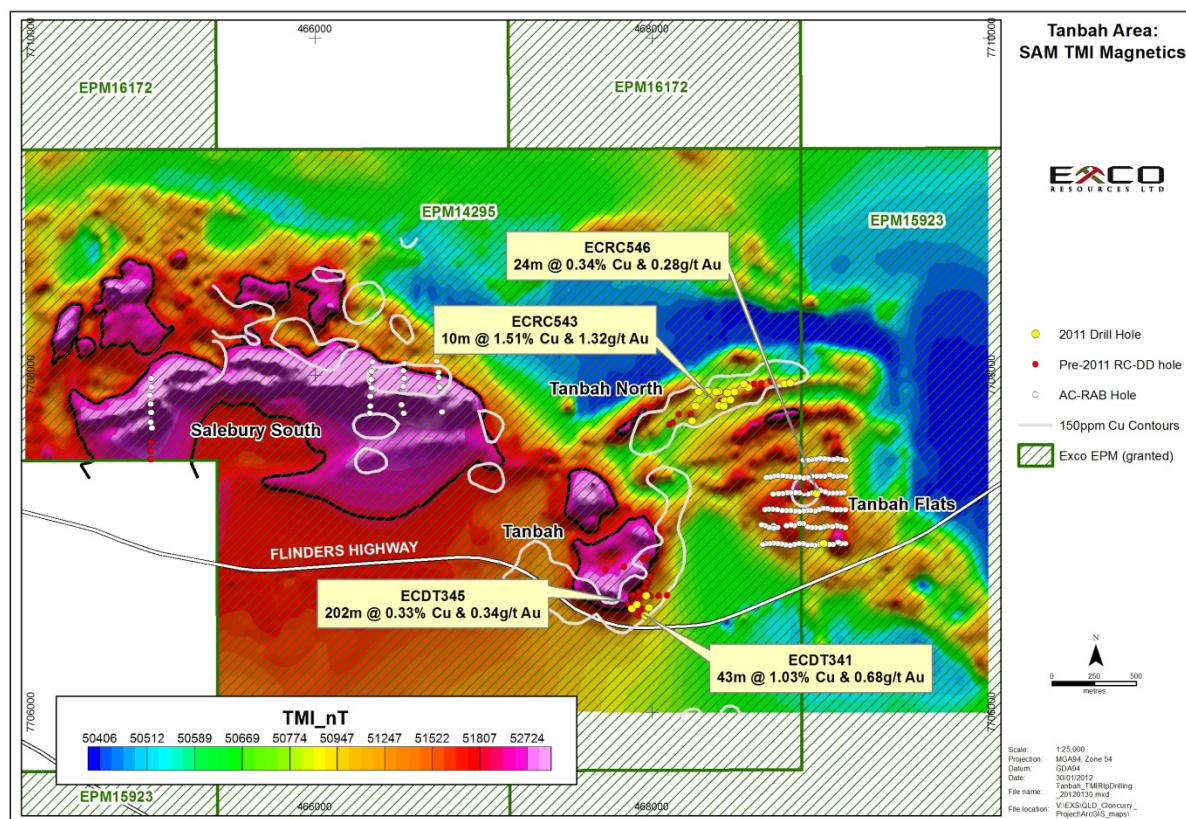
Hole ID	Length	Cu %	Au g/t	From
ECRC115	66	0.41	0.06	0
ECRC553	12	1.34	0.57	18
Inc	4	3.05	1.11	24
ECRC556	16	0.23	0.09	42
Inc	2	2.21	0.57	64



Pumpkin Gully Syncline

- Work completed to date in the Pumpkin Gully syncline has yielded a number of very positive results.
- A recent HeliSAM survey and detailed surface soil geochemistry over the Tanbah-Salebury South has highlighted several areas of significant coincident geochemical and magnetic anomalies.
- Better intersections in the Pumpkin Gully area to date include:

Hole ID	Length	Cu %	Au g/t	From
Salebury				
ECRC397	20	2.07	1.53	32
and	12	3.17	2.38	32
ECDD002	48	2.18	1.97	87
Tanbah				
ECDT341	23	1.52	0.75	40
ECDT345	202	0.33	0.34	38
ECDD003	47	0.59	0.25	34

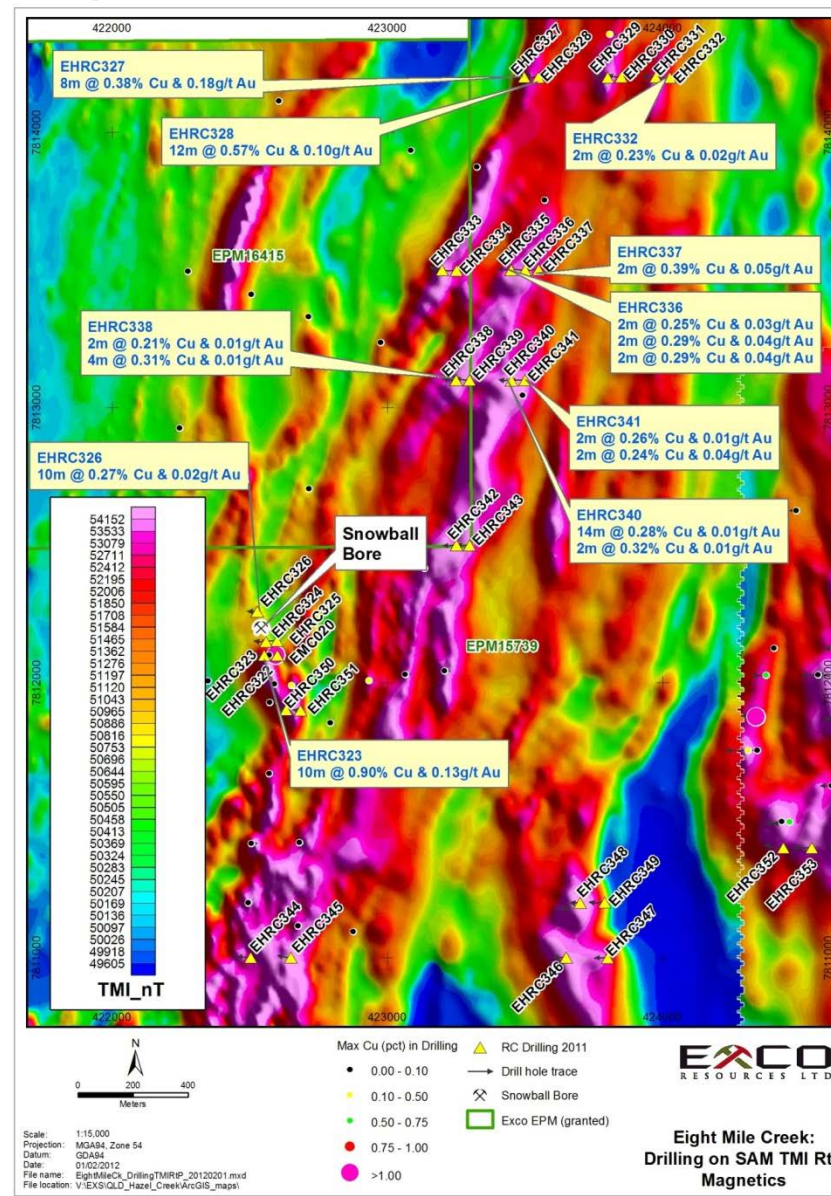


Hazel Creek - Eight Mile Creek

- Previous drilling during the 1990's intersected 30m @ 0.90% Cu.
- Recent SAM survey outlined a number of significant magnetic & conductive anomalies coincident with this historical intersection.
- Exco drilling intercepts to date include:

Hole ID	Length	Cu (%)	Au (g/t)	From
EHRC323	10	0.90	0.13	54
EHRC327	18	0.27	0.16	12
EHRC328	12	0.65	0.11	48
EHRC340	30	0.19		12

- A review of the recent drilling and geophysics, including inversion of recently acquired gravity data, is underway.
- The new data has outlined a very large gravity anomaly partly coincident with the magnetic zone to the south of Eight Mile Creek.



Exco Strategy 2012

White Dam

- Ongoing leaching to recover all viable ounces.
- Ongoing exploration.

Great Australia Royalty/Mt Colin

- Cash flow to commence imminently from GA royalty.
- Pursue options to monetise Mt Colin in the short to medium term.

Cloncurry Exploration

- Medium and long term – identification of large self sustaining resources in Cloncurry and Hazel Creek. (Tier One Targets)
- Short term – resource delineation for 3rd party transactions. (Tier Two Targets)

New Growth Opportunities

- Evaluation of all opportunities within the Cloncurry Region.
- Use strong cash position strength to acquire new assets.

A helicopter is shown in flight against a cloudy sky, dropping a long cable that extends across the frame. The background features a dark, silhouetted landscape with hills and trees.

THANK YOU

EXCO
RESOURCES LTD