

LAVERTON EXPLORATION SUCCESS DELIVERS 140% INCREASE IN MINERAL RESOURCE AT BURTVILLE

Key Points:

- **Burtville Mineral Resource increases to 5.7Mt @ 1.3g/t for 235,000oz of gold**
- **Wider exploration review points to likelihood of a very large mineralised system outside existing mined area**
- **Short-term goal is to advance development of Burtville and establish an Ore Reserve to enable incorporation in the 12 month mining schedule at Laverton**

Focus Minerals Ltd. (ASX: FML), a leading Australian gold producer and explorer, is pleased to announce that recent drilling at the Burtville mining centre in Laverton (see ASX release dated 31 July 2012) has delivered a 140% increase in its Burtville Mineral Resource estimate to 5.7Mt @ 1.3g/t for 235,000 ounces of contained gold (Table 1).

Burtville (Figure 1) has been a target of strong interest for Focus since it took control of the Laverton operations in October 2011. Burtville was a large, low strip ratio, open pit operation mined in the 1990s by Sons of Gwalia producing 64,000oz @ 1.4g/t. Numerous workings indicate a substantial gold system across a 2km x 1km footprint (Figure 2) located 22km from the Barrick Granny Smith Mill.

Table 1: Burtville Mineral Resource.

Class	Indicated			Inferred			Total		
	Tonnes T	Grade Au g/t	Ounces	Tonnes T	Grade Au g/t	Ounces	Tonnes T	Grade Au g/t	Ounces
Oxide	213,000	1.2	8,500	1,264,000	1.3	53,000	1,477,000	1.3	61,500
Transition	841,000	1.3	35,500	613,000	1.3	26,000	1,454,000	1.3	61,500
Fresh	519,000	1.3	21,000	2,269,000	1.2	91,000	2,788,000	1.2	112,000
Total	1,573,000	1.3	65,000	4,146,000	1.3	170,000	5,719,000	1.3	235,000

NOTE: Some errors may result due to rounding

“This is a significant increase in the Mineral Resource from a drilling program that has only focused on one small portion of the Burtville system,” said Focus Minerals CEO, Campbell Baird. “Very little drilling has been previously undertaken within a 2km x 1km area around the old pit, where old workings and structural trends highlight significant exploration upside.”

About Focus Minerals: Focus Minerals is a leading Australian gold producer operating two significant production centres in Western Australia’s Eastern Goldfields. The company is the largest landholder in the Coolgardie Gold Belt, 35km west of ‘Super Pit’ in Kalgoorlie, where it runs The Tindals Mining Centre underground and open pit operations, and The Mount underground, 85km to the south. Gold is processed at Focus’ 1.2Mtpa processing plant, Three Mile Hill, which is adjacent to the town of Coolgardie. 250km to the northeast Focus also operates, the Laverton Gold Project which comprises a significant portfolio of large scale open pit mines, with ore being processed under an OPA at the nearby Barrick Granny Smith plant.

Campbell Baird
Chief Executive Officer
Focus Minerals Ltd
Ph: +61 8 9215 7888

Neil Le Febvre
Investor Relations
Focus Minerals Ltd
Ph: +61 8 9215 7888

Michael Mullane
Media Relations
Cannings Corporate
Ph: +61 2 8284 9990

Figure 2: Burtville location plan.

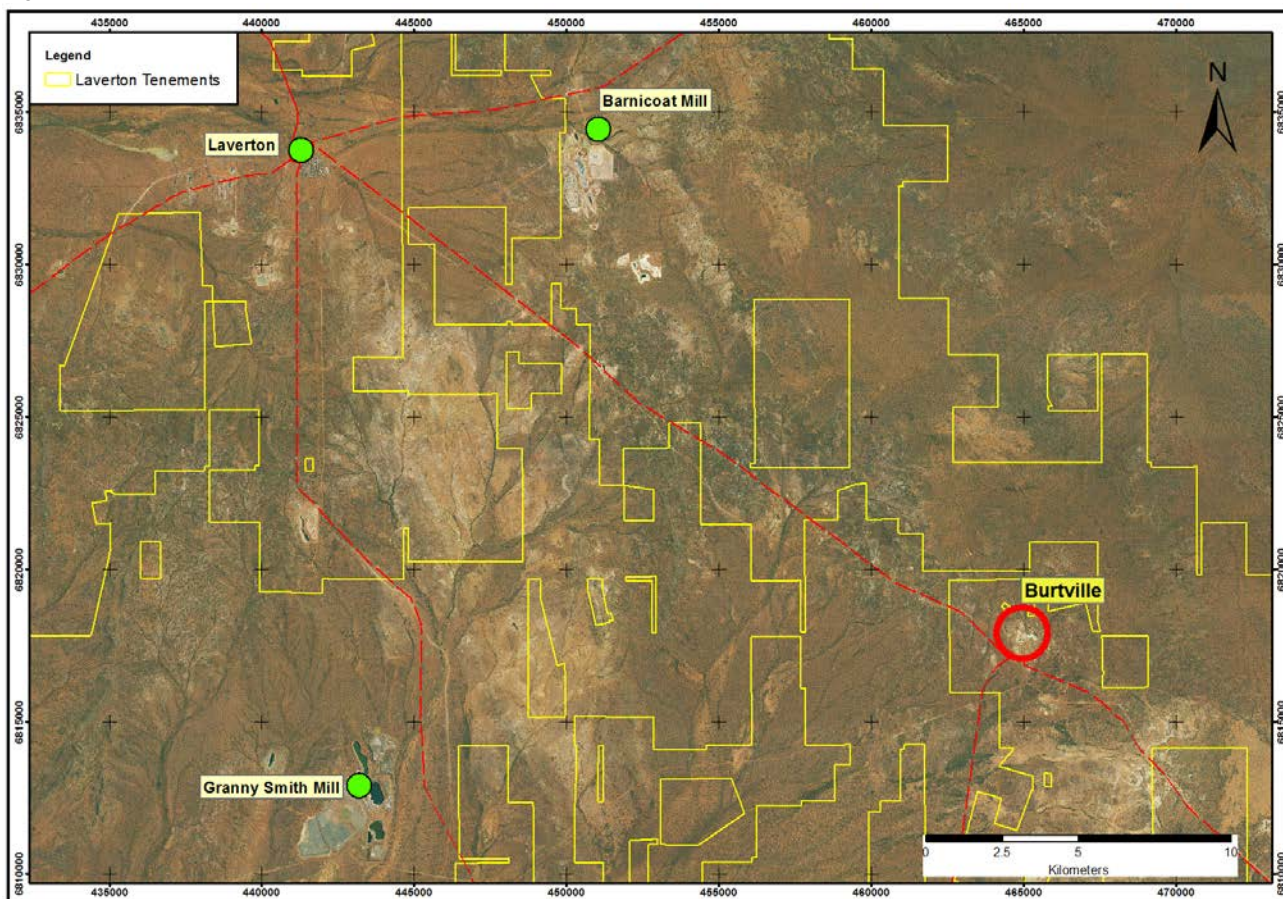
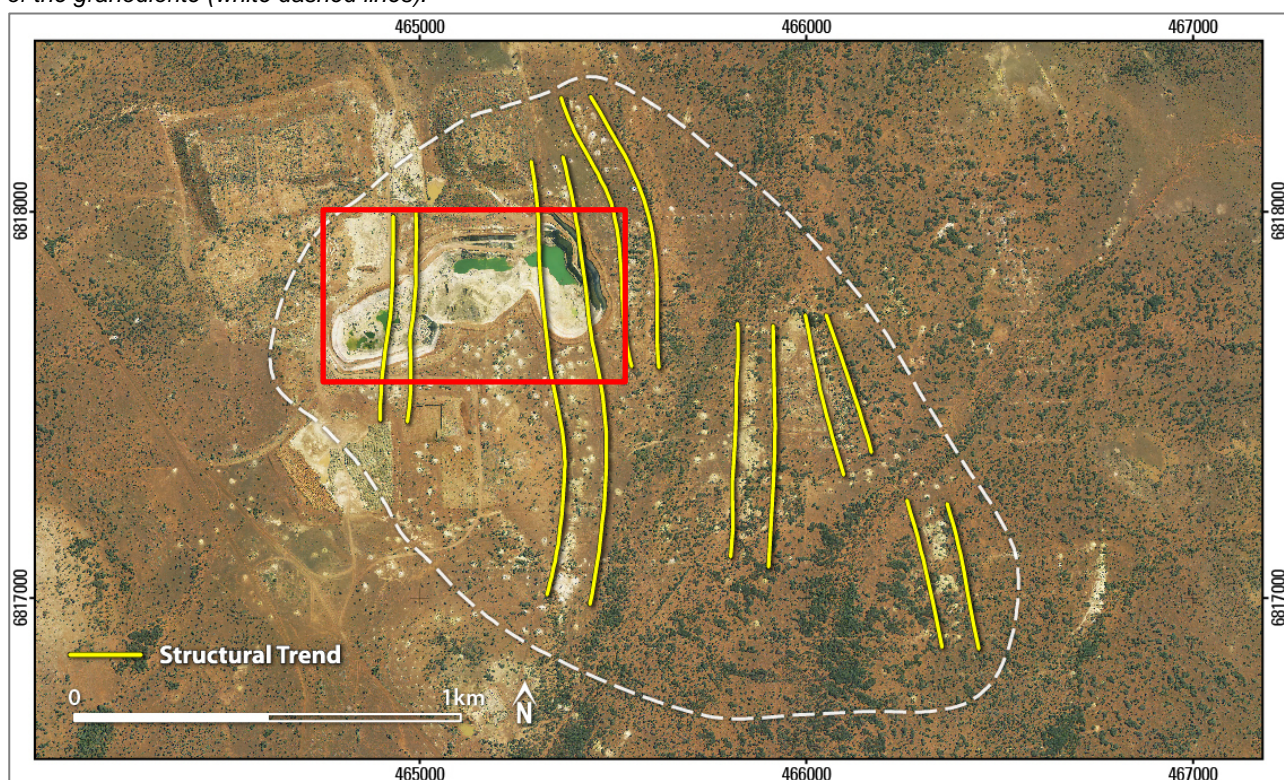


Figure 2: Plan view of the Burtville area, highlighting the area of the resource (in red box). Numerous historical shafts and spoil heaps are evident. Interpreted structural trends are indicated (in yellow), along with the outline of the interpreted area of the granodiorite (white dashed lines).



COMPETENT PERSON'S STATEMENT: The information in this report that relates to Exploration Results and Minerals Resources is based on information compiled by Dr Garry Adams a member of the Australian Institute of Geoscientists and a fulltime employee of Focus Minerals and Mr Tim Journeaux of Quantitative Group (QG) who is a member of the Australasian Institute of Mining and Metallurgy. Both Dr Adams and Mr Journeaux have sufficient experience that is relevant to the style of mineralisation and type of deposit under consideration and to the activity which they are undertaking to qualify as a Competent Persons as defined in the 2004 Edition of the "Australasian Code for Reporting of Exploration Results, Mineral Resources and Ore Reserves". Dr Adams and Mr Journeaux consent to the inclusion in the report of the matters based on the information in the form and content in which it appears.

Notes to accompany the Mineralised Resource Statement

The Burtville deposit is hosted in granodiorite. To the northeast the granodiorite is in contact with a sequence of bedded siltstone and felsic tuff. Narrow (1-3m) fine grained mafic and felsic dykes cut the granodiorite and adjacent rocks.

Numerous gold bearing quartz veins (1mm – 30cm thick) cut through the rock types at Burtville, with the best vein development occurring within the granodiorite. The larger veins contain disseminated pyrite. The largest concentration of veins occurs in the western half of the pit, where the recent drilling programme was targeted. Gold mineralisation appears to be confined mainly to the quartz veins.

The Mineral Resource upgrade is a result of RC drilling completed in the March and June 2012 Quarters by Focus.

The updated interpretations were then used to create a new Mineral Resource model for the deposit.

Drilling Information

The Burtville area has had a significant amount of historical drilling completed by Sons of Gwalia in the early to mid 1990's. Focus Minerals (via Crescent Gold) drilling an additional 142 RC holes in the first and second quarters of 2012 along with smaller RC programs of 50 RC holes drilled in the second quarter of 2011 and 17 RC holes drilled in the fourth quarter of 2010. Drill spacing is generally 20m x 10m for the first 30m vertically below the current open pit and generally 20m x 20m from 30m to 70m vertically below the current open pit. The current open pit floor is generally 40m vertically below the natural surface.

The recent Focus Minerals drill holes at Burtville have been down hole surveyed by a gyroscope down hole survey tool and all collars picked up by a decimetre accurate DGPS unit. All drilling has been logged (lithology, alteration, structure, veining and mineralisation) in detail and stored in electronic databases after being validated.

The 209 RC drill holes completed by Focus were all sampled to single one metre intervals.

All Focus samples have been assayed using the Fire Assay method at Aurum labs with a 50g Fire Assay with AAS finish. Stringent QAQC measures are in place with the use of control samples to monitor laboratory performance.

Geological Model

The geological interpretation (geology and mineralisation) was conducted internally by Focus Minerals and the Mineral Resource estimation conducted by the Quantitative Group. Grade shells at a nominal 0.5g/t cut-off grade were generated. Samples within individual wireframes were composited to 1m intervals and a top cut value was 10g/t Au and was applied to all lodes.

A Datamine block model was created in GDA grid co-ordinates by Quantitative Group. The estimation was generated using the Ordinary Kriging (OK) estimation techniques based on drill hole data and geological interpretations provided by Focus Minerals. Quantitative Group is an independent resource consulting firm specialising in resource estimation.

A bulk density of 2.65t/m³ was applied to fresh rock, 2.18t/m³ to transitional material and 1.7t/m³ to oxide material in the ore zones within the model. These values are assumed based on historical values previously used at Burtville and the wider Laverton area.

The Mineral Resource has been reported at a 0.8g/t lower cut-off grade and is depleted by using the current survey pick up of the Burtville area.

The reported grades, tonnages and contained ounces are rounded to appropriate levels of precision and classified in accordance with the recommendations of the JORC Code.