



GREENLAND
MINERALS AND ENERGY LTD

Company Announcement, April 1st, 2015

Exploration License over Kvanefjeld Project Area Renewed

Greenland Minerals and Energy Ltd ('GMEL' or 'the Company') is pleased to advise that the Company's key exploration license over the Kvanefjeld Project area (EL 2010/02) has been renewed for a further three years. License EL 2010/02 covers the northern Ilimaussaq Complex, located in southern Greenland, and hosts the Kvanefjeld, Sørensen and Zone 3 rare earth – uranium deposits (Figure 1).

Collectively, the three deposits account for a global polymetallic resource base of greater than 1 billion tonnes (JORC-code, 2012 compliant). The license has been renewed in accordance with Greenland's rules and regulations, and is in good standing.

Importantly, license EL 2010/02 features an addendum that allows for the exploration of radioactive elements, which are not otherwise covered by standard exploration licenses in Greenland.

GMEL is currently working to complete all the necessary studies that are required to apply for an exploitation license. These include a comprehensive feasibility study, and social and environmental impact assessments. Upon approval by the Greenland government, the exploration license will be converted to exploitation (mining) license.

PERTH: Unit 6 100 Railway Road, Subiaco Western Australia 6008 Postal: PO Box 2006 Subiaco WA 6904
Telephone: +61 8 9382 2322 **Facsimile:** +61 8 9382 2788
LONDON: First Floor 47 Charles Street, Mayfair, London W1J 5EL
GREENLAND: PO Box 156, Narsaq, Greenland 3921
WEB: www.ggg.gl **EMAIL:** info@ggg.gl **ABN** 85 118 463 004



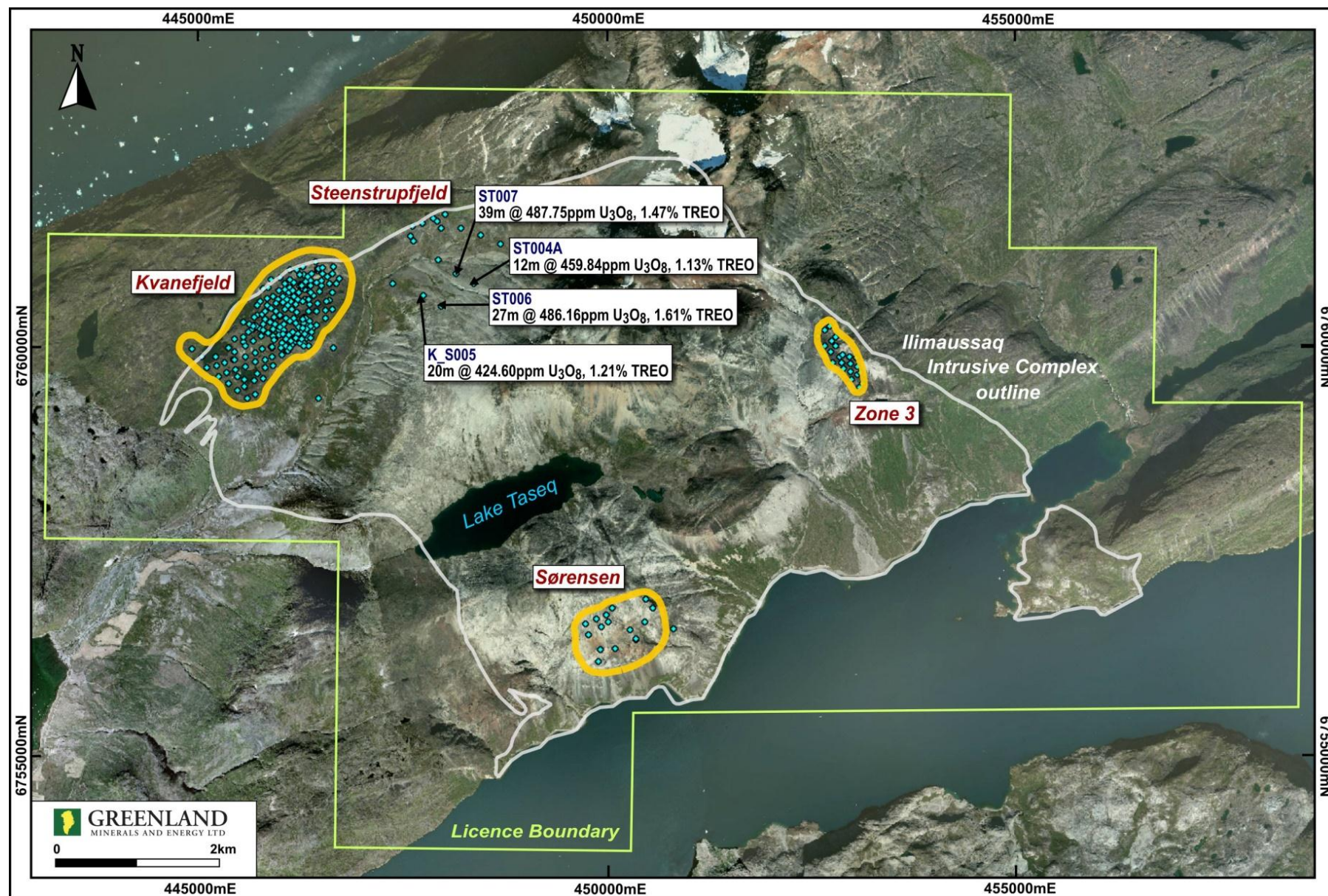


Figure 1. Overview of license EL 2010/02 that contains the Kvanefjeld project area, centred on the northern Ilimaussaq Complex in south Greenland. Three JORC-code (2012) compliant resources have been defined; Kvanefjeld, Sørensen, and Zone 3. Numerous mineralised drill intercepts occur outside the resource shells, highlighting the clear potential for further increases to the resource base.

Statement of Identified Mineral Resources, Kvanefjeld Project, Independently Prepared By SRK Consulting

Multi-Element Resources Classification, Tonnage and Grade										Contained Metal				
Cut-off (U ₃ O ₈ ppm) ¹	Classification	M tonnes Mt	TREO ² ppm	U ₃ O ₈ ppm	LREO ppm	HREO ppm	REO ppm	Y ₂ O ₃ ppm	Zn ppm	TREO Mt	HREO Mt	Y ₂ O ₃ Mt	U ₃ O ₈ M lbs	Zn Mt
<i>Kvanefjeld - February 2015</i>														
150	Measured	143	12,100	303	10,700	432	11,100	978	2,370	1.72	0.06	0.14	95.21	0.34
150	Indicated	308	11,100	253	9,800	411	10,200	899	2,290	3.42	0.13	0.28	171.97	0.71
150	Inferred	222	10,000	205	8,800	365	9,200	793	2,180	2.22	0.08	0.18	100.45	0.48
150	Total	673	10,900	248	9,600	400	10,000	881	2,270	7.34	0.27	0.59	368.02	1.53
200	Measured	111	12,900	341	11,400	454	11,800	1,048	2,460	1.43	0.05	0.12	83.19	0.27
200	Indicated	172	12,300	318	10,900	416	11,300	970	2,510	2.11	0.07	0.17	120.44	0.43
200	Inferred	86	10,900	256	9,700	339	10,000	804	2,500	0.94	0.03	0.07	48.55	0.22
200	Total	368	12,100	310	10,700	409	11,200	955	2,490	4.46	0.15	0.35	251.83	0.92
250	Measured	93	13,300	363	11,800	474	12,200	1,105	2,480	1.24	0.04	0.10	74.56	0.23
250	Indicated	134	12,800	345	11,300	437	11,700	1,027	2,520	1.72	0.06	0.14	101.92	0.34
250	Inferred	34	12,000	306	10,800	356	11,100	869	2,650	0.41	0.01	0.03	22.91	0.09
250	Total	261	12,900	346	11,400	440	11,800	1,034	2,520	3.37	0.11	0.27	199.18	0.66
300	Measured	78	13,700	379	12,000	493	12,500	1,153	2,500	1.07	0.04	0.09	65.39	0.20
300	Indicated	100	13,300	368	11,700	465	12,200	1,095	2,540	1.34	0.05	0.11	81.52	0.26
300	Inferred	15	13,200	353	11,800	391	12,200	955	2,620	0.20	0.01	0.01	11.96	0.04
300	Total	194	13,400	371	11,900	471	12,300	1,107	2,530	2.60	0.09	0.21	158.77	0.49
350	Measured	54	14,100	403	12,400	518	12,900	1,219	2,550	0.76	0.03	0.07	47.59	0.14
350	Indicated	63	13,900	394	12,200	505	12,700	1,191	2,580	0.87	0.03	0.07	54.30	0.16
350	Inferred	6	13,900	392	12,500	424	12,900	1,037	2,650	0.09	0.00	0.01	5.51	0.02
350	Total	122	14,000	398	12,300	506	12,800	1,195	2,570	1.71	0.06	0.15	107.45	0.31

Statement of Identified Mineral Resources, Kvanefjeld Project, Independently Prepared By SRK Consulting

Multi-Element Resources Classification, Tonnage and Grade										Contained Metal				
Cut-off (U ₃ O ₈ ppm) ¹	Classification	M tonnes Mt	TREO ² ppm	U ₃ O ₈ ppm	LREO ppm	HREO ppm	REO ppm	Y ₂ O ₃ ppm	Zn ppm	TREO Mt	HREO Mt	Y ₂ O ₃ Mt	U ₃ O ₈ M lbs	Zn Mt
<i>Sørensen - March 2012</i>														
150	Inferred	242	11,000	304	9,700	398	10,100	895	2,602	2.67	0.10	0.22	162.18	0.63
200	Inferred	186	11,600	344	10,200	399	10,600	932	2,802	2.15	0.07	0.17	141.28	0.52
250	Inferred	148	11,800	375	10,500	407	10,900	961	2,932	1.75	0.06	0.14	122.55	0.43
300	Inferred	119	12,100	400	10,700	414	11,100	983	3,023	1.44	0.05	0.12	105.23	0.36
350	Inferred	92	12,400	422	11,000	422	11,400	1,004	3,080	1.14	0.04	0.09	85.48	0.28
<i>Zone 3 - May 2012</i>														
150	Inferred	95	11,600	300	10,200	396	10,600	971	2,768	1.11	0.04	0.09	63.00	0.26
200	Inferred	89	11,700	310	10,300	400	10,700	989	2,806	1.03	0.04	0.09	60.00	0.25
250	Inferred	71	11,900	330	10,500	410	10,900	1,026	2,902	0.84	0.03	0.07	51.00	0.20
300	Inferred	47	12,400	358	10,900	433	11,300	1,087	3,008	0.58	0.02	0.05	37.00	0.14
350	Inferred	24	13,000	392	11,400	471	11,900	1,184	3,043	0.31	0.01	0.03	21.00	0.07
<i>All Deposits – Grand Total</i>														
150	Measured	143	12,100	303	10,700	432	11,100	978	2,370	1.72	0.06	0.14	95.21	0.34
150	Indicated	308	11,100	253	9,800	411	10,200	899	2,290	3.42	0.13	0.28	171.97	0.71
150	Inferred	559	10,700	264	9,400	384	9,800	867	2,463	6.00	0.22	0.49	325.66	1.38
150	Grand Total	1010	11,000	266	9,700	399	10,100	893	2,397	11.14	0.40	0.90	592.84	2.42

¹There is greater coverage of assays for uranium than other elements owing to historic spectral assays. U₃O₈ has therefore been used to define the cutoff grades to maximise the confidence in the resource calculations.

²Total Rare Earth Oxide (TREO) refers to the rare earth elements in the lanthanide series plus yttrium.

Note: Figures quoted may not sum due to rounding.

-ENDS-

ABOUT GREENLAND MINERALS AND ENERGY LTD.

Greenland Minerals and Energy Ltd (ASX: GGG) is an exploration and development company focused on developing high-quality mineral projects in Greenland. The Company's flagship project is the Kvanefjeld multi-element deposit (Rare Earth Elements, Uranium, Zinc), that stands to be the world's premier specialty metals project. A comprehensive pre-feasibility study was finalised in 2012, and the feasibility study will be completed in 2015. The studies demonstrate the potential for a large-scale, cost-competitive, multi-element mining operation. Through 2015, GMEL is focussed on completing a mining license application in order to commence project permitting, in parallel to advancing commercial discussions with development partners. For further information on Greenland Minerals and Energy visit <http://www.ggg.gl> or contact:

Dr John Mair
Managing Director
+61 8 9382 2322

David Tasker
Professional PR
+61 8 9388 0944

Christian Olesen
Rostra Communication
+45 3336 0429

Greenland Minerals and Energy Ltd will continue to advance the Kvanefjeld project in a manner that is in accord with both Greenlandic Government and local community expectations, and looks forward to being part of continued stakeholder discussions on the social and economic benefits associated with the development of the Kvanefjeld Project.

Competent Person Statement

The information in this report that relates to Mineral Resources is based on information compiled by Robin Simpson, a Competent Person who is a Member of the Australian Institute of Geoscientists. Mr Simpson is employed by SRK Consulting (UK) Ltd ("SRK"), and was engaged by Greenland Minerals and Energy Ltd on the basis of SRK's normal professional daily rates. SRK has no beneficial interest in the outcome of the technical assessment being capable of affecting its independence. Mr Simpson has sufficient experience that is relevant to the style of mineralisation and type of deposit under consideration and to the activity being undertaken to qualify as a Competent Person as defined in the 2012 Edition of the 'Australasian Code for Reporting of Exploration Results, Mineral Resources and Ore Reserves'. Robin Simpson consents to the inclusion in the report of the matters based on his information in the form and context in which it appears.

The mineral resource estimate for the Kvanefjeld Project was updated and released in a Company Announcement on February 12th, 2015. There have been no material changes to the resource estimate since this announcement.