



Resolute

ASX Announcement

1 August 2016

Syama Drilling Results

Deep high grade intercepts at Syama confirm major extension

Highlights

- Further broad, high grade intercepts returned from the ongoing deep drilling program at Resolute's Syama Gold Mine in Mali have identified a major extension to the Syama orebody.
- Significant results include:
 - SYDD432 62m @ 6.7g/t Au from 651m
 - SYDD431 23m @ 3.6g/t Au from 717m; and 46m @ 3.1g/t Au from 749m
 - SYRD434 31m @ 2.55g/t Au from 781m
 - SYDD436 7m @ 5.00g/t Au from 570m
- The results confirm the consistency and continuity of mineralisation below the current Syama Underground Reserve and emphasise the possibility of future expansion and extension to the Syama Gold Mine.
- The Syama deep extension drilling program is planned to continue throughout 2016 and is expected to enhance the existing resource model and deliver further mine life extension opportunities beyond the current 12-year mine life of the Syama Underground Project.

Resolute Mining Limited (Resolute or the Company) (ASX:RSG) is pleased to report new broad high grade results from deep drilling at the Syama Gold Mine (Syama) in Mali. The Syama deep drilling program was commenced in late 2015 with the ambition of substantially expanding the Syama underground resource. Positive results have been previously reported for the first two drill holes of the program (refer to ASX announcements dated 8 February 2016 and 9 March 2016). Results have been received from a further seven holes with significant intercepts demonstrating mineralisation at Syama remains open to the north and south at depth. The results highlight the potential for substantial future resource growth.

Resolute's Managing Director and CEO, Mr John Welborn, was delighted by the positive exploration results: "Syama is a world class orebody and these results highlight the exceptional size and quality of the deposit. Resolute has commenced development of an underground mine at Syama which the recently released Definitive Feasibility Study demonstrated will deliver strong margins for Resolute over an operating life of more than 12 years. Site production from Syama is expected to reach 250kozpa based on our existing models. The DFS is based on the current underground reserve which has not yet been updated with results reported from the deep drilling program. We expect to materially increase the Syama underground resource in due course. In addition to opportunities for a substantial increase in the already impressive mine life, we will consider the potential to expand future production."

For further information, contact:

John Welborn | *Managing Director and CEO*

Telephone: +61 8 9261 6100 | Email: contact@rml.com.au | Web: www.rml.com.au



Syama deep drilling results

The Syama resource extension drilling program was commenced in late 2015 and was originally designed for 10,000m to test the continuity of mineralisation below the existing resource model. The initial success of the program will ensure that drilling will now continue throughout 2016. The planned program will now include step out positions that, based on the high grade results received to date, are expected to deliver major extensions to the Syama deposit.

Significant assay results recently received, and not previously reported, included:

- SYDD431 23m @ 3.56g/t Au from 717m; and
46m @ 3.11g/t Au from 749m
- SYDD432 62m @ 6.71g/t Au from 651m
- SYRD434 31m @ 2.55g/t Au from 781m
- SYDD436 7m @ 5.00g/t Au from 570m

Significant results previously reported included:

- SYDD428 32m @ 2.7g/t Au from 323m; and
13m @ 3.1g/t Au from 377m.
- SYRD429 28m @ 5.1g/t Au from 708m.

Note: Intersections are reported as down hole length and not true width using a 1.0g/t cut-off and up to three continuous metres of internal waste. Results have been reported in accordance with the JORC code 2012 guidelines. A comprehensive listing of all drill results is provided in the attached Appendix 1 and the assessment criteria JORC Table 1 is attached as Appendix 2.

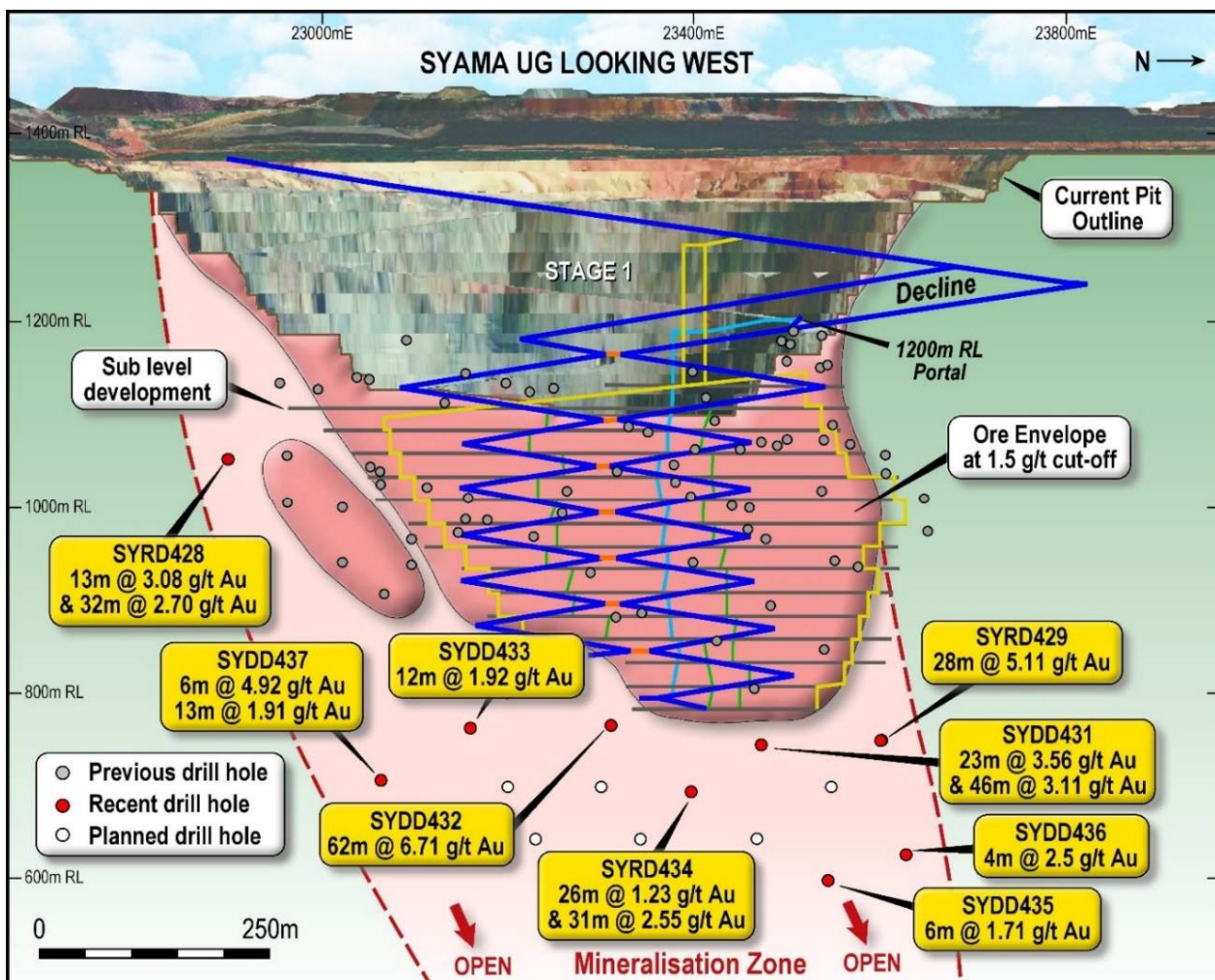


Figure 1: Longitudinal projection showing location of new diamond drill hole pierce points, results and designed underground development.



The intersections announced in this release, in addition to those reported on 8 February 2016 and 9 March 2016, are displayed above in a longitudinal projection of the Syama orebody (see Figure 1 above). The projection demonstrates that the new intercepts are positioned outside the current Syama mining reserve and significantly extend the known mineralisation. It is expected the Syama resource inventory will increase substantially when these results are incorporated into the model. Of particular relevance is the exceptional intercept in SYDD432 (**62m @ 6.7g/t Au**) underlining the future high grade potential of the Syama deposit at depth. Results from the deep resource extension drilling program are expected to extend the underground mine life at Syama and may provide opportunity for future expansion of the underground project. The Syama UG DFS (refer to ASX announcement dated 30 June 2016) included a twin decline design which provides Resolute the potential to expand production beyond the currently planned rate of 2.4 million tonnes per annum.

The Syama deep resource extension drilling program will continue through 2016.

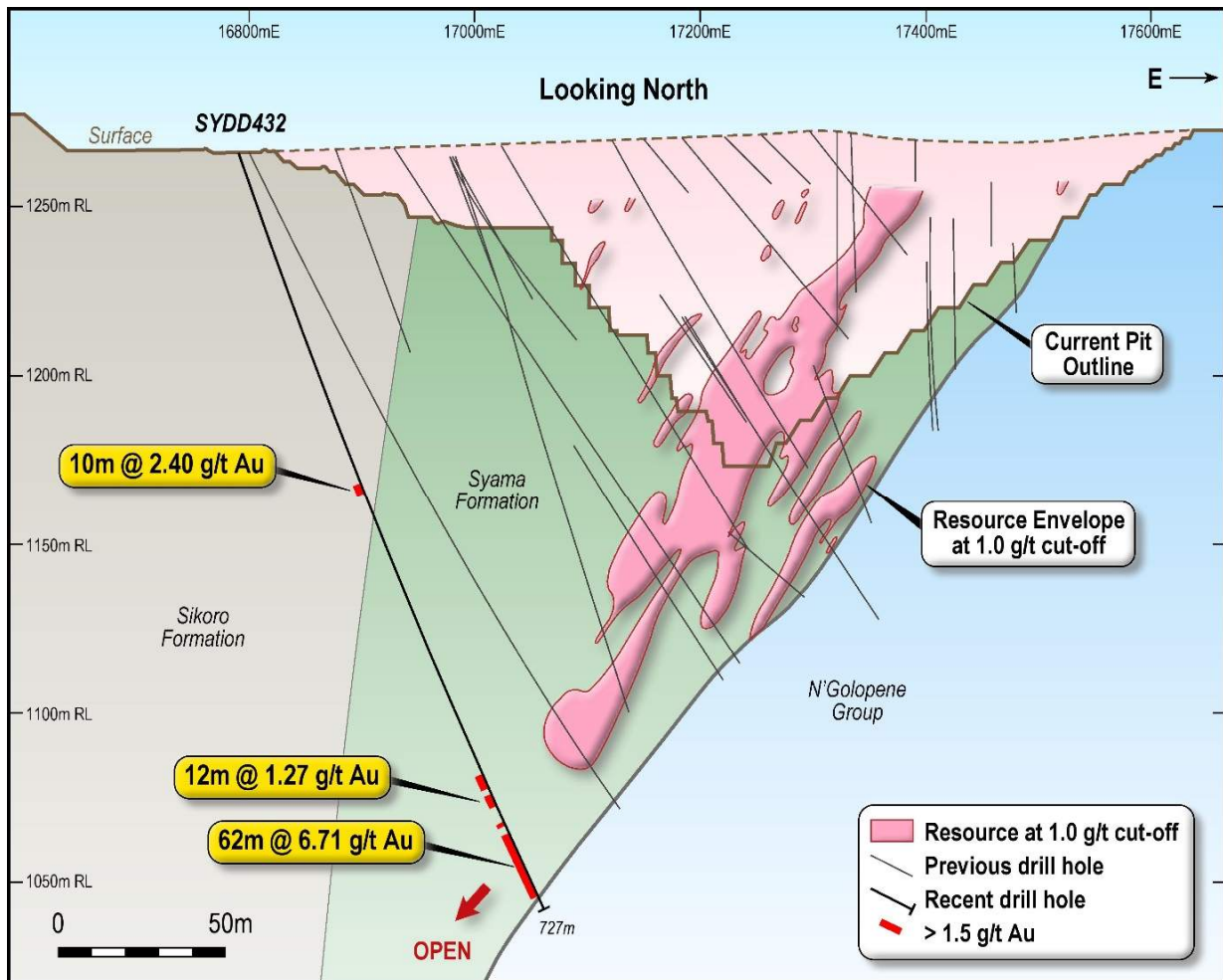


Figure 2: Cross Section showing SYDD432



Resolute

ASX Announcement

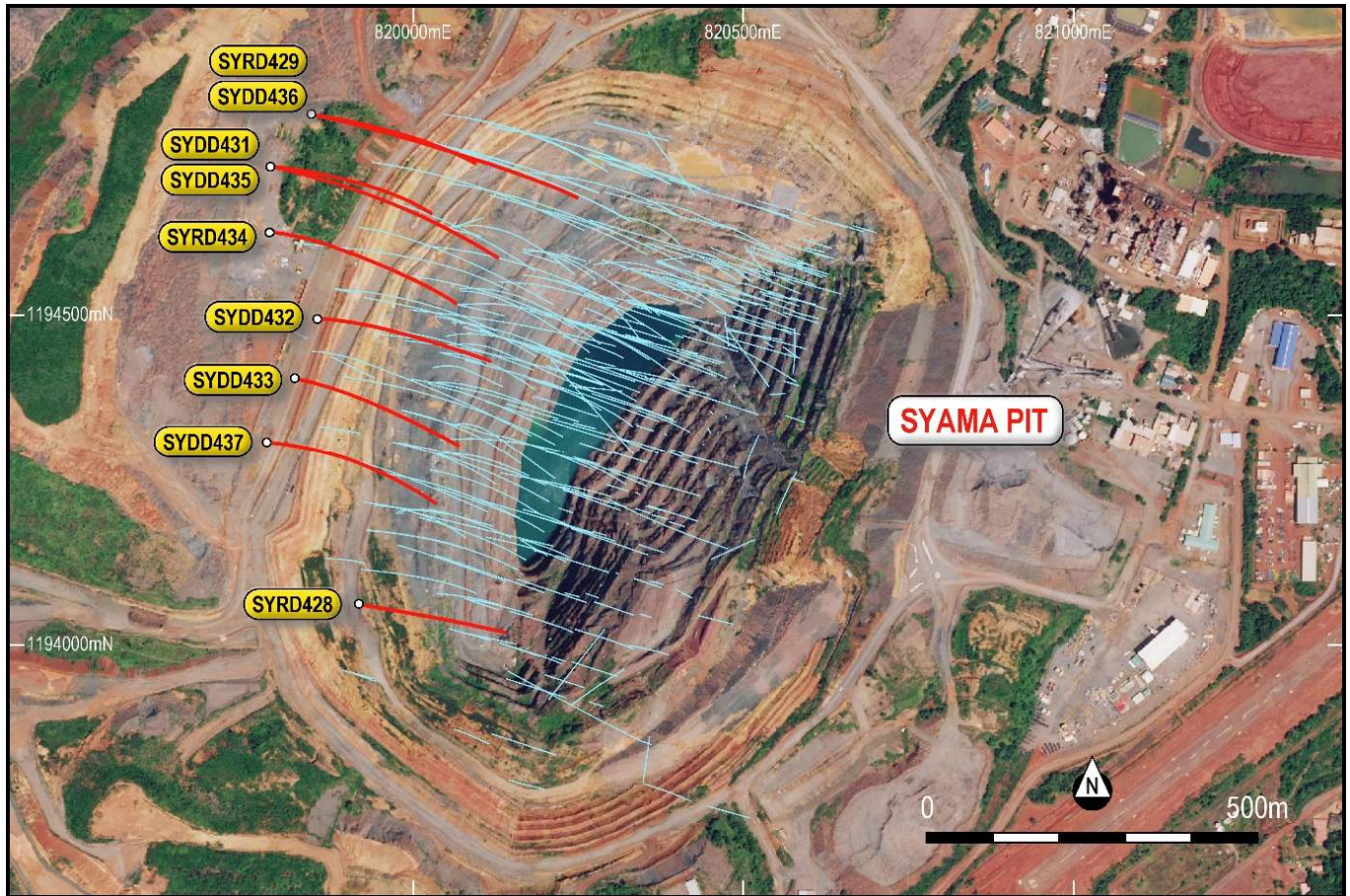


Figure 3: Drillhole plan of the recently completed drilling.

For further information, contact:

John Welborn

Managing Director and CEO

Resolute Mining Limited

Telephone: +61 8 9261 6100

Email: contact@rml.com.au

Web: www.rml.com.au



Resolute

ASX Announcement

Appendix 1: Drill Results

Hole_ID	North (WGS)	East (WGS)	RL (m)	Dip	Azi (WGS)	EOH (m)	From (m)	To (m)	Width (m)	Au (g/t)
SYDD431	1194725	819790	376	-64	102	805.8	514	517	3	2.12
							675	680	5	1.05
							689	696	7	1.03
							702	709	7	2.16
							717	740	23	3.56
							749	795	46	3.11
SYDD432	1194496	819854	374	-69	98	726.9	314	324	10	2.40
							440	443	3	1.36
							565	568	3	1.31
							594	607	13	1.34
							613	625	12	1.27
							640	644	4	1.33
SYDD433	1194404	819819	375	-70	101	722.7	485	490	5	1.18
							596	602	6	1.14
							631	636	5	1.44
							675	679	4	3.09
							700	712	12	1.92
							751	755	4	1.33
SYDD435	1194726	819784	376	-75	100	874.5	684	694	10	1.09
							827	833	6	1.71
							846	850	4	1.33
SYDD436	1194804	819847	375	-72	98	812.9	570	577	7	5.00
							804	808	4	2.50
SYDD437	1194309	819776	376	-68	98	749.3	484	490	6	1.40
							498	502	4	1.59
							604	610	6	4.92
							679	682	3	2.45
							726	739	13	1.91
SYRD434	1194626	819779	375	-75	100	815.9	659	665	6	2.07
							671	680	9	1.47
							706	732	26	1.23
							748	753	5	1.33
							758	766	8	1.98
							781	812	31	2.55

Notes to Accompany Table:

- Grid coordinates are WGS84 Zone 29 North
- Intervals are HQ and NQ diamond core sampled every 1m by cutting the core in half to provide a 2-4kg sample
- Cut-off grade for reporting of intercepts is >1g/t Au with a maximum of 3m consecutive internal dilution included within the intercept; only intercepts >=3m are reported
- No top cut of individual assays prior to length weighted compositing of the reported intercept has been applied
- Samples are analysed for gold by Au-AA25 method which is a 30g fire assay fusion with AAS instrument finish



Resolute

ASX Announcement

About Resolute

Resolute is a successful gold miner with more than 25 years of continuous production. The Company is an experienced explorer, developer, and operator having operated nine gold mines across Australia and Africa which have produced in excess of 7 million ounces of gold. The Company currently operates two mines, the Syama Gold Mine in Africa and the Ravenswood Gold Mine in Australia, and is one of the largest gold producers listed on the Australian Securities Exchange with FY17 guidance of 300,000 ounces of gold production at All-in-Sustaining-Costs of A\$1,280/oz (US\$934/oz).

Resolute's flagship Syama Gold Mine in Mali is a robust long life asset benefitting from fully operational parallel sulphide and oxide processing plants. The move to underground mining will continue the asset's history of strong cash generation and extend the mine life to out beyond 2028. The Ravenswood Gold Mine in Queensland, Australia demonstrates Resolute's significant underground expertise in the ongoing success in mining the Mt Wright ore body. In Ghana, the Company has completed a feasibility study on the Bibiani Gold Project focused on the development of an underground operation requiring modest capital and using existing plant infrastructure. Resolute also controls an extensive exploration footprint along the highly prospective Syama Shear and greenstone belts in Mali and Cote d'Ivoire and is active in reviewing new opportunities to build shareholder value.

Competent Persons Statement

The information in this report that relates to the Exploration Results, Mineral Resources and Ore Reserves is based on information compiled by Mr Richard Bray who is a Registered Professional Geologist with the Australian Institute of Geoscientists and Mr Andrew Goode, a member of The Australasian Institute of Mining and Metallurgy. Mr Richard Bray and Mr Andrew Goode both have more than 5 years' experience relevant to the styles of mineralisation and type of deposit under consideration and to the activity which they are undertaking to qualify as a Competent Person, as defined in the 2012 Edition of the "Australasian Code for Reporting of Exploration Results, Mineral Resources and Ore Reserves". Mr Richard Bray and Mr Andrew Goode are full time employees of Resolute Mining Limited Group and each hold equity securities in the Company. They have consented to the inclusion of the matters in this report based on their information in the form and context in which it appears. This information was prepared and disclosed under the JORC code 2012 except where otherwise noted. Particular Reserves and Resources remain 2004 JORC compliant and not updated to JORC code 2012 on the basis that information has not materially changed since it was last reported.

ASX:RSG Capital Summary

Fully Paid Ordinary Shares: 655,632,994
Current Share Price: A\$1.66, 29 July 2016
Market Capitalisation: A\$1.09 Billion
FY16 Guidance: 300,000oz @ AISC A\$1280/oz

Board of Directors

Mr Peter Huston *Non-Executive Chairman*
Mr John Welborn *Managing Director & CEO*
Mr Peter Sullivan *Non-Executive Director*
Mr Martin Botha *Non-Executive Director*
Mr Bill Price *Non-Executive Director*

Contact

John Welborn *Managing Director & CEO*
4th Floor, BGC Centre | 28 The Esplanade
Perth, Western Australia 6000
T: +61 8 9261 6100 | F: +61 8 9322 7597
E: contact@rml.com.au



Appendix 2: Syama Gold Mine Mali | JORC Code, 2012 Edition – Table 1 Report

Section 1 Sampling Techniques and Data

CRITERIA	JORC CODE EXPLANATION	COMMENTARY
Sampling techniques	<ul style="list-style-type: none"> Nature and quality of sampling (e.g. cut channels, random chips, or specific specialised industry standard measurement tools appropriate to the minerals under investigation, such as down hole gamma sondes, or handheld XRF instruments, etc.). These examples should not be taken as limiting the broad meaning of sampling. Include reference to measures taken to ensure sample representivity and the appropriate calibration of any measurement tools or systems used. Aspects of the determination of mineralisation that are Material to the Public Report. In cases where 'industry standard' work has been done this would be relatively simple (e.g. 'reverse circulation drilling was used to obtain 1 m samples from which 3 kg was pulverised to produce a 30 g charge for fire assay'). In other cases more explanation may be required, such as where there is coarse gold that has inherent sampling problems. Unusual commodities or mineralisation types (e.g. submarine nodules) may warrant disclosure of detailed information. 	<p>Diamond Drill Core was sampled at 1m intervals and cut in half, to provide a 2-4kg sample, which was sent to the laboratory for crushing, splitting and pulverising, to provide a 30g charge for analysis.</p> <p>Sampling and sample preparation protocols are industry standard and are deemed appropriate by the Competent Person.</p>
Drilling techniques	<ul style="list-style-type: none"> Drill type (e.g. core, reverse circulation, open-hole hammer, rotary air blast, auger, Bangka, sonic, etc.) and details (e.g. core diameter, triple or standard tube, depth of diamond tails, face-sampling bit or other type, whether core is oriented and if so, by what method, etc.). 	<p>Drill types used include diamond core of HQ and NQ sizes.</p> <p>Core is oriented at 3m down hole intervals using a Reflex ActII RD Orientation Tool.</p>
Drill sample recovery	<ul style="list-style-type: none"> Method of recording and assessing core and chip sample recoveries and results assessed. Measures taken to maximise sample recovery and ensure representative nature of the samples. Whether a relationship exists between sample recovery and grade and whether sample bias may have occurred due to preferential loss/gain of fine/coarse material. 	<p>Drill core interval recoveries are measured from core block to core block using a tape measure.</p> <p>Appropriate measures are taken to maximise sample recovery and ensure representative nature of the samples.</p> <p>No apparent relationship between sample recovery and grade.</p>
Logging	<ul style="list-style-type: none"> Whether core and chip samples have been geologically and geotechnically logged to a level of detail to support appropriate Mineral Resource estimation, mining studies and metallurgical studies. Whether logging is qualitative or quantitative in nature. Core (or costean, channel, etc.) photography. The total length and percentage of the relevant intersections logged. 	<p>Drill holes were geologically logged by geologists for colour, grain size, lithology, minerals, alteration and weathering on geologically dominated intervals.</p> <p>Geotechnical and structure orientation data was measured and logged for all diamond core intervals.</p> <p>Diamond core was photographed (wet and dry).</p>



		<p>Diamond core were logged into Excel spread sheets, then validated and imported into the digital drill hole database.</p> <p>Holes were logged in their entirety (100%) and this logging was considered reliable and appropriate.</p>
Sub-sampling techniques and sample preparation	<ul style="list-style-type: none"> • If core, whether cut or sawn and whether quarter, half or all core taken. • If non-core, whether riffled, tube sampled, rotary split, etc. and whether sampled wet or dry. • For all sample types, the nature, quality and appropriateness of the sample preparation technique. • Quality control procedures adopted for all sub-sampling stages to maximise representivity of samples. • Measures taken to ensure that the sampling is representative of the in situ material collected, including for instance results for field duplicate/second-half sampling. • Whether sample sizes are appropriate to the grain size of the material being sampled. 	<p>Core were sampled at 1m intervals and cut in half to obtain a 2-4kg sample which was sent to the laboratory for crushing, splitting and pulverising.</p> <p>Core samples were submitted to ALS Bamako laboratory for sample preparation and analysis. Sample preparation includes oven drying, crushing to 10mm and splitting, pulverising to 85% passing -75 microns. These preparation techniques are deemed to be the appropriate to the material and element being sampled.</p> <p>ALS Inspection has the QMs framework either Certified to ISO 9001:2008 or Accredited to ISO 17025:2005 in all of its locations.</p> <p>Drill core coarse duplicates were split by the laboratory after crushing at a rate of 1:20 samples.</p> <p>Sampling, sample preparation and quality control protocols are of industry standard and all attempts were made to ensure an unbiased representative sample was collected. The methods applied in this process were deemed appropriate by the Competent Person.</p>
Quality of assay data and laboratory tests	<ul style="list-style-type: none"> • The nature, quality and appropriateness of the assaying and laboratory procedures used and whether the technique is considered partial or total. • For geophysical tools, spectrometers, handheld XRF instruments, etc., the parameters used in determining the analysis including instrument make and model, reading times, calibrations factors applied and their derivation, etc. • Nature of quality control procedures adopted (e.g. standards, blanks, duplicates, external laboratory checks) and whether acceptable levels of accuracy (i.e. lack of bias) and precision have been established. 	<p>Core samples were analysed for gold by ALS Bamako Au-AA25 method, which is a 30g fire assay fusion with AAS instrument finish. The analytical method was appropriate for the style of mineralisation.</p> <p>No geophysical tools were used to determine elemental concentrations.</p> <p>Quality control (QC) procedures included the use of certified standards and blanks (1:20), non-certified sand blanks (1:20), coarse duplicates (1:20).</p> <p>Laboratory quality control data, including laboratory standards, blanks, duplicates, repeats and grind size results were also captured into the digital database and analysed for accuracy and precision.</p> <p>Analysis of the QC sample assay results indicates that an acceptable level of accuracy and precision has been achieved.</p>
Verification of sampling and assaying	<ul style="list-style-type: none"> • The verification of significant intersections by either independent or alternative company personnel. • The use of twinned holes. • Documentation of primary data, data entry procedures, data verification, data storage (physical and electronic) protocols. 	<p>Verification of significant intersections have been completed by company personnel and the competent person.</p> <p>No drill holes within the resource area were twinned.</p>



	<ul style="list-style-type: none"> Discuss any adjustment to assay data. 	<p>Drill holes were logged onto paper templates or Excel templates with lookup codes, validated and then compiled into a relational SQL 2008 database using DataShed data management software. The database has a variety of verification protocols which are used to validate the data entry. The drill hole database is backed up on a daily basis to the head office server.</p> <p>Assay result files were reported by the laboratory in CSV format and were imported into the SQL database without adjustment or modification.</p>
Location of data points	<ul style="list-style-type: none"> Accuracy and quality of surveys used to locate drill holes (collar and down-hole surveys), trenches, mine workings and other locations used in Mineral Resource estimation. Specification of the grid system used. Quality and adequacy of topographic control. 	<p>Collar coordinates were picked up in UTM (WGS84) by staff surveyors using an RTK DGPS with an expected accuracy of $\pm 0.05\text{m}$; elevations were height above EGM96 geoid.</p> <p>Down hole surveys were collected every 6m using Reflex EZTRAC magnetic multi shot instrument. A time-dependent declination was applied to the magnetic readings to determine UTM azimuth.</p> <p>Coordinates and azimuth are reported in UTM WGS84 Zone 29 North in this release.</p> <p>Coordinates were translated to local mine grid where appropriate.</p> <p>Local topographic control is via satellite photography and drone UAV Aerial Survey.</p>
Data spacing and distribution	<ul style="list-style-type: none"> Data spacing for reporting of Exploration Results. Whether the data spacing and distribution is sufficient to establish the degree of geological and grade continuity appropriate for the Mineral Resource and Ore Reserve estimation procedure(s) and classifications applied. Whether sample compositing has been applied. 	<p>Drill hole spacing was sufficient to demonstrate geological and grade continuity appropriate for a Mineral Resource and the classifications applied under the 2012 JORC Code. However, no mineral resource was disclosed in this release.</p> <p>The appropriateness of the drill spacing was reviewed by the geological technical team, both on site and head office. This was also reviewed by the Competent Person.</p> <p>Core samples were collected on 1m intervals; no sample compositing is applied during sampling.</p>
Orientation of data in relation to geological structure	<ul style="list-style-type: none"> Whether the orientation of sampling achieves unbiased sampling of possible structures and the extent to which this is known, considering the deposit type. If the relationship between the drilling orientation and the orientation of key mineralised structures is considered to have introduced a sampling bias, this should be assessed and reported if material. 	<p>Holes were drilled predominantly perpendicular to mineralised domains where possible.</p> <p>No orientation based sampling bias has been identified in the data.</p>
Sample security	<ul style="list-style-type: none"> The measures taken to ensure sample security. 	<p>Core samples were collected from the drill site and stored on site, then securely dispatched to the laboratories.</p>

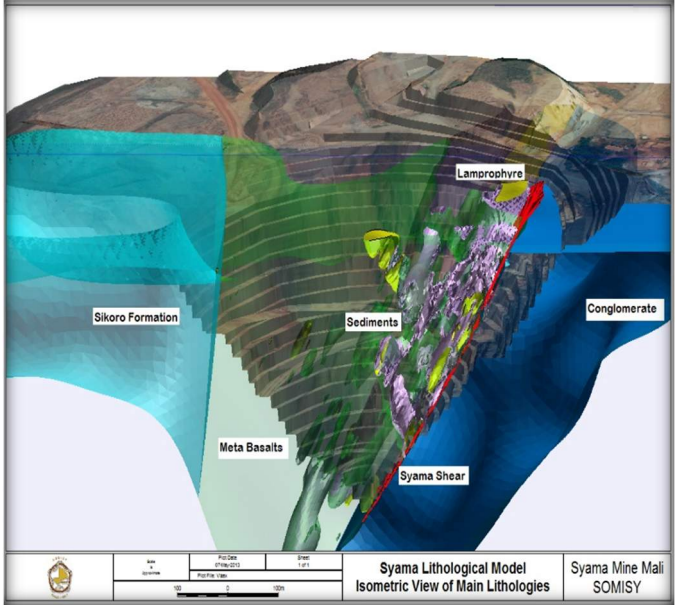


		All aspects of sampling process were supervised by SOMISY personnel and very limited opportunities exist for tampering with samples.
Audits or reviews	<ul style="list-style-type: none"> The results of any audits or reviews of sampling techniques and data. 	External audits of procedures indicate protocols are within industry standards.

Section 2 Reporting of Exploration Results

CRITERIA	JORC CODE EXPLANATION	COMMENTARY
Mineral tenement and land tenure status	<ul style="list-style-type: none"> Type, reference name/number, location and ownership including agreements or material issues with third parties such as joint ventures, partnerships, overriding royalties, native title interests, historical sites, wilderness or national park and environmental settings. The security of the tenure held at the time of reporting along with any known impediments to obtaining a licence to operate in the area. 	<p>Drilling was conducted within the Malian Exploitation Concession Permit PE 93/003 which covers an area of 200.6 Km²</p> <p>Resolute Mining Limited has an 80% interest in the Syama project and the Exploitation Permit PE—93/003, on which it is based, through its Malian subsidiary, Société des Mines de Syama SA (SOMISY). The Malian Government holds a free carried 20% interest in SOMISY.</p> <p>The Permit is held in good standing. Malian mining law provides that all mineral resources are administered by DNGM (Direction Nationale de la Géologie et des Mines) or National Directorate of Geology and Mines under the Ministry of Mines, Energy and Hydrology.</p>
Exploration done by other parties	<ul style="list-style-type: none"> Acknowledgment and appraisal of exploration by other parties. 	<p>The Syama deposit was originally discovered by a regional geochemical survey undertaken by the Direction National de Géologie et des Mines (DNGM) with assistance from the United Nations Development Program (UNDP) in 1985. There had also been a long history of artisanal activities on the hill where an outcropping chert horizon originally marked the present day position of the open pit.</p> <p>BHP during 1987-1996 sampled pits, trenches, auger, RC and diamond drill holes across Syama prospects.</p> <p>Randgold Resources Ltd during 1996-2000 sampled pits, trenches, auger, RAB, RC and diamond drill holes across Syama prospects.</p>
Geology	<ul style="list-style-type: none"> Deposit type, geological setting and style of mineralisation. 	<p>The Syama Project is found on the northern margin of the Achaean-Proterozoic Leo Shield which forms the southern half of the West African Craton. The project area straddles the boundary between the Kadiana–Madinani terrane and the Kadiolo terrane. The Kadiana–Madinani terrane is dominated by greywackes and a narrow belt of interbedded basalt and argillite. The Kadiolo terrane comprises polymictic conglomerate and</p>



		<p>sandstone that were sourced from the Kadiana-Madinani terrane and deposited in a late- to syntectonic basin.</p> <p>Prospects are centred on the NNE striking, west dipping, Syama-Bananso Fault Zone and Birimian volcano-sedimentary units of the Syama Formation. The major commodity being sought is gold.</p> 
<p>Drill hole Information</p>	<ul style="list-style-type: none"> • A summary of all information material to the understanding of the exploration results including a tabulation of the following information for all Material drill holes: <ul style="list-style-type: none"> ○ easting and northing of the drill hole collar ○ elevation or RL (Reduced Level – elevation above sea level in metres) of the drill hole collar ○ dip and azimuth of the hole ○ down hole length and interception depth ○ Whole length. • If the exclusion of this information is justified on the basis that the information is not Material and this exclusion does not detract from the understanding of the report, the Competent Person should clearly explain why this is the case. 	<p>All information including easting, northing, elevation, dip, azimuth, coordinate system, drill hole length, intercept length and depth were measured and recorded in UTM Zone 29 WGS84.</p> <p>The Syama belt is mostly located on the Tengrela 1/200,000 topo sheet (Sheet NC 29-XVIII).</p> <p>The Syama local grid has been tied to the UTM Zone 29 WGS84 co-ordinate system.</p> <p>Spectrum Survey & Mapping from Australia established survey control at Syama using AusPos online processing to obtain an accurate UTM Zone 29 (WGS84) and 'above geoid' RL for the origin of the survey control points.</p>



		<p>Accuracy of the survey measurements is considered to meet acceptable industry standards.</p> <p>Drill hole information has been tabulated for this release in Appendix 1 of the accompanying text.</p> <p>For completeness the following information about the diamond drilling is provided:</p> <ul style="list-style-type: none"> • Easting, Northing and RL of the drill hole collars were measured and recorded in UTM Zone 29 (WGS84). • Dip is the inclination of the drill hole from horizontal. For example, a drill hole drilled at <ul style="list-style-type: none"> ◦ -60° is 60° from the horizontal. • Down hole length is the distance down the inclination of the hole and was measured as the distance from the horizontal to end of hole. • Intercept depth is the distance from the start of the hole down the inclination of the hole to the depth of interest or assayed interval of interest. <p>The Competent Persons do not believe the listing of the entire drill hole data base used to calculate the resources is relevant for this release.</p>
Data aggregation methods	<ul style="list-style-type: none"> • In reporting Exploration Results, weighting averaging techniques, maximum and/or minimum grade truncations (e.g. cutting of high grades) and cut-off grades are usually Material and should be stated. • Where aggregate intercepts incorporate short lengths of high grade results and longer lengths of low grade results, the procedure used for such aggregation should be stated and some typical examples of such aggregations should be shown in detail. • The assumptions used for any reporting of metal equivalent values should be clearly stated. 	<p>Exploration results reported in this announcement are tabulated using the following parameters:</p> <ul style="list-style-type: none"> • Grid coordinates are WGS84 Zone 29 North. • Intervals are NQ or HQ diamond core sampled every 1m by cutting the core in half to provide a 2-4kg sample. • Cut-off grade for reporting of intercepts is $>1\text{g/t Au}$ with a maximum of 3m consecutive internal dilution included within the intercept; only intercepts $\geq 3\text{m}$ are reported. • No top cut of individual assays prior to length weighted compositing of the reported intercept has been applied. • Samples are analysed for gold by Au-AA25 method which is a 30g fire assay fusion with AAS instrument finish
Relationship between mineralisation widths and intercept lengths	<ul style="list-style-type: none"> • These relationships are particularly important in the reporting of Exploration Results. • If the geometry of the mineralisation with respect to the drill hole angle is known, its nature should be reported. • If it is not known and only the down hole lengths are reported, there should be a clear statement to this effect (e.g. 'down hole length, true width not known'). 	<p>The mineralisation is steeply dipping at approximately 60° from the horizontal.</p> <p>The majority of the drill holes are planned at local grid 090⁰ at a general inclination of -60° east to achieve as close to perpendicular to the ore zone as possible. At the angle of the drill holes and the dip of the ore zones, the reported intercepts will be slightly more than true width.</p>
Diagrams	<ul style="list-style-type: none"> • Appropriate maps and sections (with scales) and tabulations of intercepts 	<p>Relevant maps, diagrams and tabulations are included in the body of text.</p>



	should be included for any significant discovery being reported These should include, but not be limited to a plan view of drill hole collar locations and appropriate sectional views.	
Balanced reporting	<ul style="list-style-type: none"> Where comprehensive reporting of all Exploration Results is not practicable, representative reporting of both low and high grades and/or widths should be practiced to avoid misleading reporting of Exploration Results. 	<p>Exploration results and infill drilling results are being reported in this announcement and tabulated in Appendix 1.</p> <p>The results are reported to show the potential to expand the Underground Resource previously released.</p>
Other substantive exploration data	<ul style="list-style-type: none"> Other exploration data, if meaningful and material, should be reported including (but not limited to): geological observations; geophysical survey results; geochemical survey results; bulk samples – size and method of treatment; metallurgical test results; bulk density, groundwater, geotechnical and rock characteristics; potential deleterious or contaminating substances. 	No geophysical and geochemical data and any additional exploration information has been reported in this release, as they are not deemed relevant to the release.
Further work	<ul style="list-style-type: none"> The nature and scale of planned further work (e.g. tests for lateral extensions or depth extensions or large-scale step-out drilling). Diagrams clearly highlighting the areas of possible extensions, including the main geological interpretations and future drilling areas, provided this information is not commercially sensitive. 	<p>Depth extension drilling is planned to test the down-dip potential of the Syama ore body at depth, and beneath the current limit of drilling.</p> <p>Relevant maps and diagrams are included in the body of text.</p>

JORC Table 1 report