

**Evolution**  
MINING

## 2017 Diggers & Dealers

**7 August 2017**

Jake Klein – Executive Chairman

## Forward looking statement

---

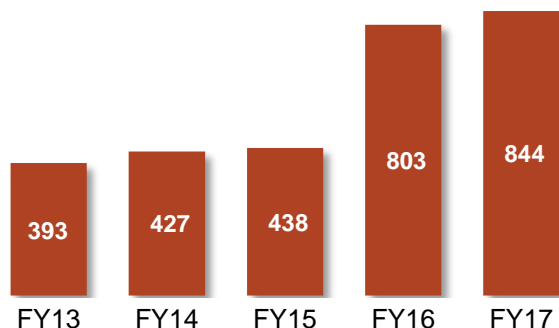
- These materials prepared by Evolution Mining Limited (or “the Company”) include forward looking statements. Often, but not always, forward looking statements can generally be identified by the use of forward looking words such as “may”, “will”, “expect”, “intend”, “plan”, “estimate”, “anticipate”, “continue”, and “guidance”, or other similar words and may include, without limitation, statements regarding plans, strategies and objectives of management, anticipated production or construction commencement dates and expected costs or production outputs.
- Forward looking statements inherently involve known and unknown risks, uncertainties and other factors that may cause the Company’s actual results, performance and achievements to differ materially from any future results, performance or achievements. Relevant factors may include, but are not limited to, changes in commodity prices, foreign exchange fluctuations and general economic conditions, increased costs and demand for production inputs, the speculative nature of exploration and project development, including the risks of obtaining necessary licenses and permits and diminishing quantities or grades of reserves, political and social risks, changes to the regulatory framework within which the Company operates or may in the future operate, environmental conditions including extreme weather conditions, recruitment and retention of personnel, industrial relations issues and litigation.
- Forward looking statements are based on the Company and its management’s good faith assumptions relating to the financial, market, regulatory and other relevant environments that will exist and affect the Company’s business and operations in the future. The Company does not give any assurance that the assumptions on which forward looking statements are based will prove to be correct, or that the Company’s business or operations will not be affected in any material manner by these or other factors not foreseen or foreseeable by the Company or management or beyond the Company’s control.
- Although the Company attempts and has attempted to identify factors that would cause actual actions, events or results to differ materially from those disclosed in forward looking statements, there may be other factors that could cause actual results, performance, achievements or events not to be as anticipated, estimated or intended, and many events are beyond the reasonable control of the Company. Accordingly, readers are cautioned not to place undue reliance on forward looking statements. Forward looking statements in these materials speak only at the date of issue. Subject to any continuing obligations under applicable law or any relevant stock exchange listing rules, in providing this information the Company does not undertake any obligation to publicly update or revise any of the forward looking statements or to advise of any change in events, conditions or circumstances on which any such statement is based.

# Overview

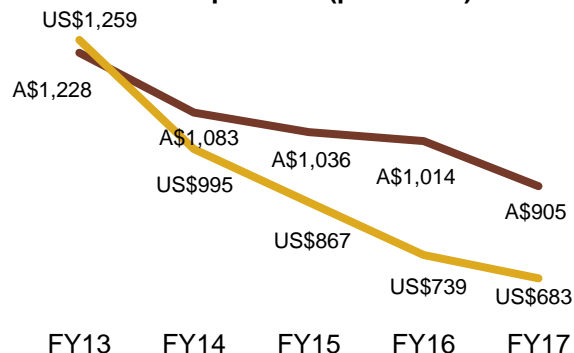


ASX code	EVN
Shares outstanding	1,683M
Market capitalisation <sup>(1)</sup>	A\$3,720M
Average daily share turnover <sup>(2)</sup>	A\$25M
Net debt <sup>(3)</sup>	A\$399M
Forward sales <sup>(3)</sup>	458,495oz at A\$1,645/oz
Dividend policy	4% of revenue
Major shareholders	La Mancha 28% <sup>(4)</sup> , Van Eck 11%

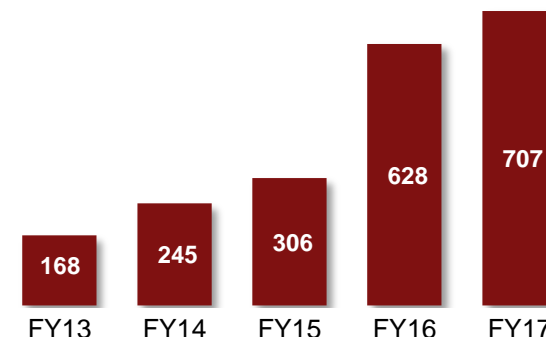
Group gold production (koz)



Group AISC<sup>(5)</sup> (per ounce)



Operating cash flow (A\$M)



(1) Based on share price of A\$2.21 per share on 3 August 2017  
 (2) Average daily share turnover for three months through to 3 August 2017

(3) As at 30 June 2017  
 (4) Relevant Interest

(5) US\$ values calculated using average AUD:USD FX in relevant financial year

# Australia's 2<sup>nd</sup> largest gold miner

## 1 Cowal (100%)

- Gold Reserves 2016 (Moz)<sup>(1)</sup> 3.20
- Gold Resources 2016 (Moz)<sup>(1)</sup> 5.04
- Reserve Grade 2016 (Au g/t) 0.85
- FY17A Au Production (koz) 263
- FY17A AISC (A\$/oz) 833
- FY17 Net Mine Cash flow (A\$M) 166

## 2 Mungari (100%)

- Gold Reserves 2016 (Moz)<sup>(1)</sup> 0.60
- Gold Resources 2016 (Moz)<sup>(1)</sup> 2.73
- Reserve Grade 2016 (Au g/t) 2.2
- FY17A Au Production (koz) 144
- FY17A AISC (A\$/oz) 1,143
- FY17 Net Mine Cash flow (A\$M) 59

## 3 Mt Carlton (100%)

- Gold Reserves 2016 (Moz)<sup>(1)</sup> 0.73
- Gold Resources 2016 (Moz)<sup>(1)</sup> 0.98
- Reserve Grade 2016 (Au g/t) 4.7
- FY17A Au Production (koz) 105
- FY17A AISC (A\$/oz) 622
- FY17 Net Mine Cash flow (A\$M) 91

## 4 Mt Rawdon (100%)

- Gold Reserves 2016 (Moz)<sup>(1)</sup> 0.87
- Gold Resources 2016 (Moz)<sup>(1)</sup> 1.19
- Reserve Grade 2016 (Au g/t) 0.8
- FY17A Au Production (koz) 101
- FY17A AISC (A\$/oz) 873
- FY17 Net Mine Cash flow (A\$M) 36

## 5 Cracow (100%)

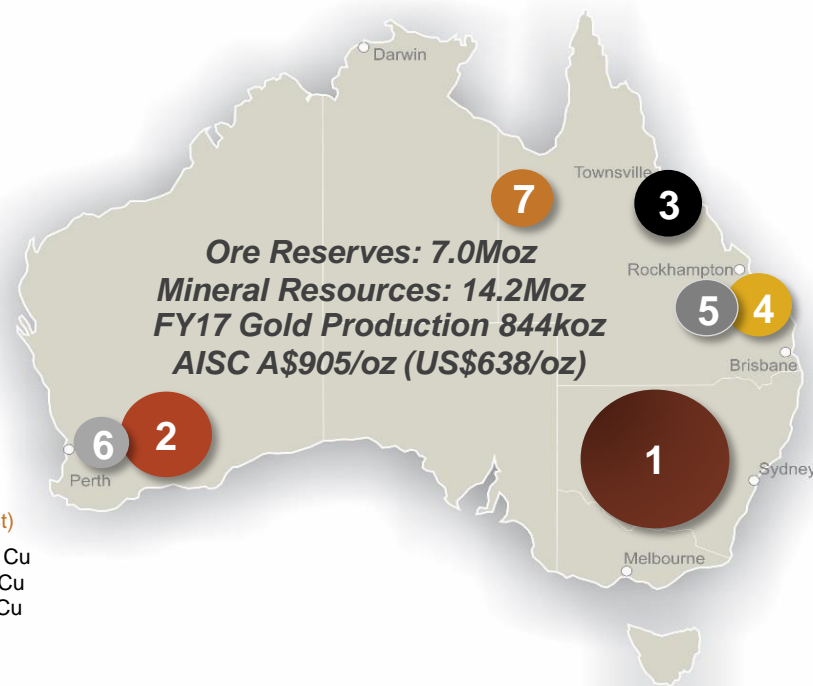
- Gold Reserves 2016 (Moz)<sup>(1)</sup> 0.19
- Gold Resources 2016 (Moz)<sup>(1)</sup> 0.52
- Reserve Grade 2016 (Au g/t) 5.7
- FY17A Au Production (koz) 89
- FY17A AISC (A\$/oz) 1,123
- FY17 Net Mine Cash flow (A\$M) 41

## 6 Edna May (100%)

- Gold Reserves 2016 (Moz)<sup>(1)</sup> 0.43
- Gold Resources 2016 (Moz)<sup>(1)</sup> 0.85
- Reserve Grade 2016 (Au g/t) 1.6
- FY17A Au Production (koz) 70
- FY17A AISC (A\$/oz) 1,440
- FY17 Net Mine Cash flow (A\$M) (15)

## 7 Ernest Henry (Evolution economic interest)

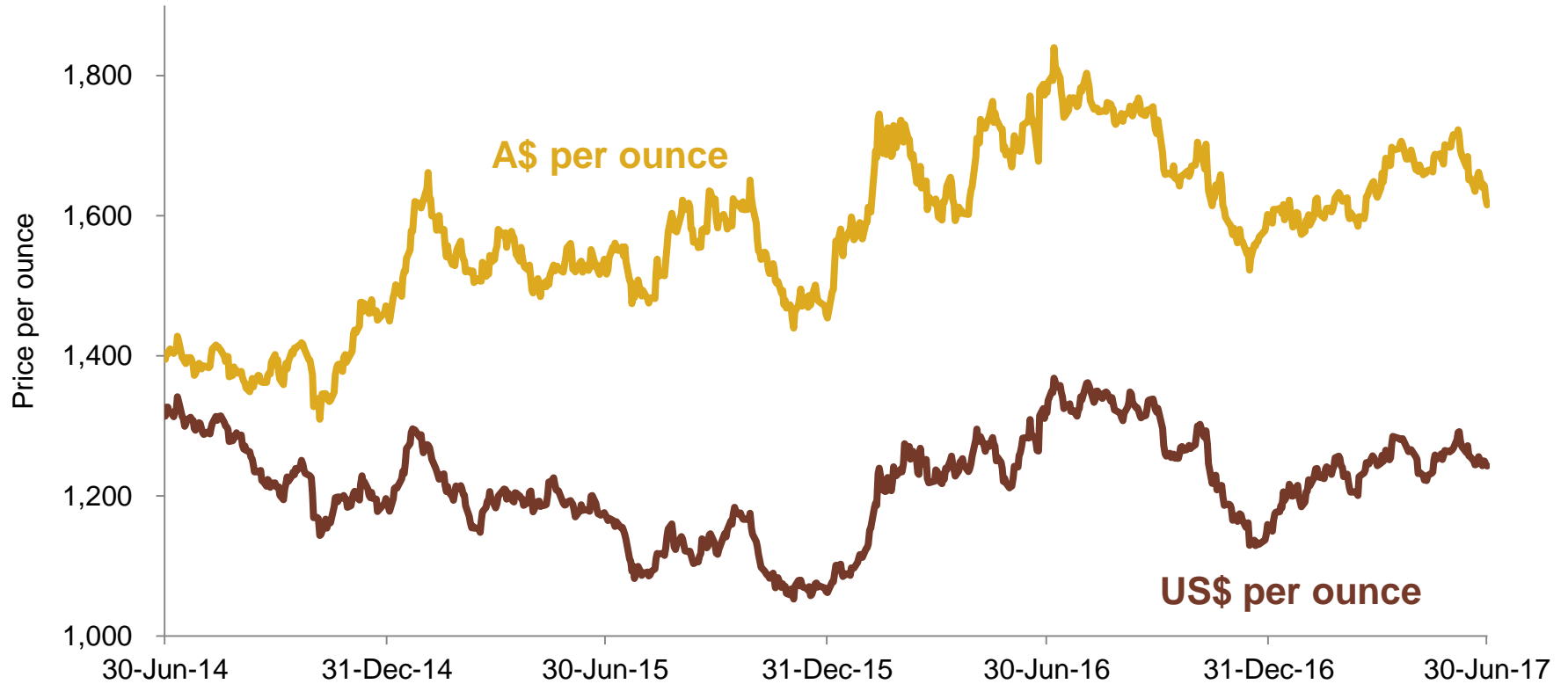
- Reserves 2016<sup>(1)</sup> 0.96Moz Au, 182kt Cu
- Resources 2016<sup>(1)</sup> 1.73Moz Au, 315kt Cu
- Reserve Grade 2016 0.50g/t Au, 1.02% Cu
- FY17A Au Production (koz)<sup>(2)</sup> 60
- FY17A AISC (A\$/oz)<sup>(2)</sup> (361)
- FY17 Net Mine Cash flow (A\$M)<sup>(2)</sup> 82



(1) This information is extracted from the report entitled "Annual Mineral Resources and Ore Reserve Statement" released by Evolution to ASX on 20 April 2017 and is available to view on [www.asx.com.au](http://www.asx.com.au). Mineral Resources and Ore Reserves are depleted to 31 December 2016

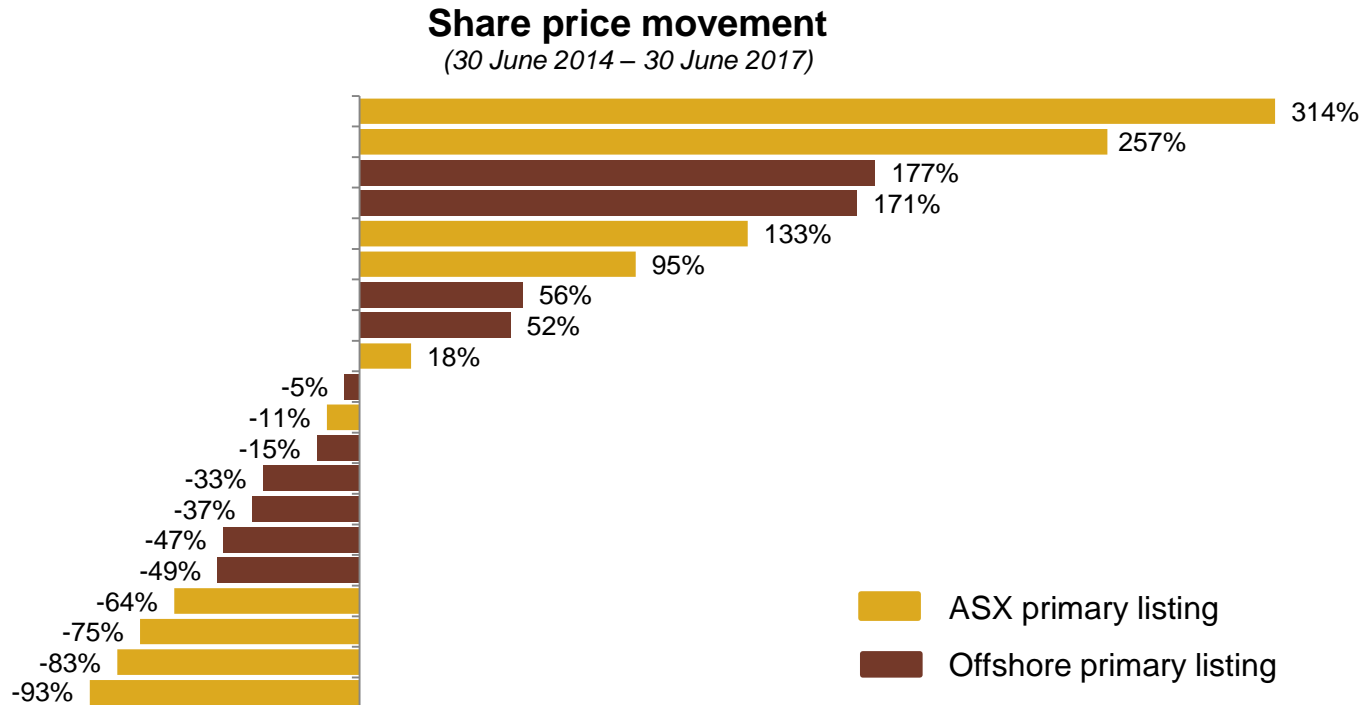
(2) Ernest Henry transaction completed 1 November 2016. Production and costs reflect 8 months of economic interest. Cash flow reflects 7 months of copper sales and 5 months of gold sales. Location bubble size denotes FY17 gold production (annualised for Ernest Henry)

# Gold price



# The investor dilemma

- More than half of the companies in Evolution's peer group delivered NEGATIVE returns over the three year period to 30 June 2017



# Attributes of a sustainable gold business

High quality, low cost, long life assets

Discovery success

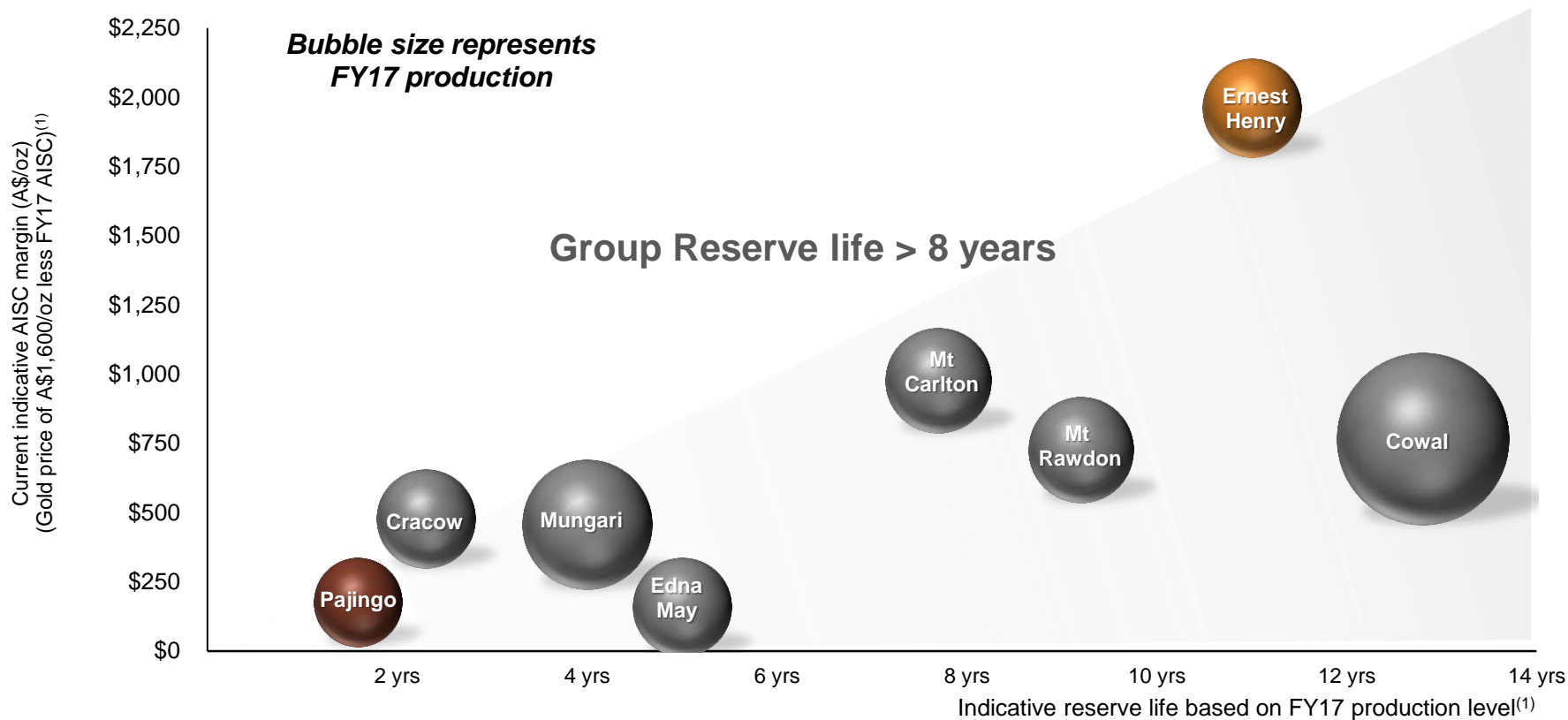
Financial discipline

Strong vision, values and sense of purpose

Counter-cyclical investment

*Building a business that prospers through the cycle*

# Upgrading the quality of our asset portfolio



Source: Data sourced from company reported figures and guidance where available.

(1) This information is extracted from the report entitled "Annual Mineral Resources and Ore Reserve Statement" released by Evolution to ASX on 20 April 2017 and is available to view on [www.asx.com.au](http://www.asx.com.au)



# Mt Carlton



March  
2010

Evolution  
Delivery

June  
2017

FEASIBILITY STUDY  
DECLARED PROJECT  
UNECONOMIC

OFFTAKE PARTY SECURED

ONE OF THE HIGHEST GRADE  
OPEN PIT GOLD MINES IN THE  
WORLD

DEVELOPED BY EVOLUTION AND  
COMMISSIONED IN 2013

LIFE OF MINE 2025

ENTERPRISE  
VALUE **A\$51M**

INITIAL CAPITAL REPAID BY  
DECEMBER 2016

GRAVITY CIRCUIT COMMISSIONED  
IN JUNE 2017 QTR TO INCREASE  
PAYABILITY

FY16  
PRODUCTION  
113koz Au

FY16 AISC  
A\$742/oz

FY16 NET  
MINE  
CASH FLOW  
A\$103M

FY17  
PRODUCTION  
105koz Au

FY17 AISC  
A\$622/oz

FY17 NET  
MINE  
CASH FLOW  
A\$91M

# Cowal



<b>MINING PERMIT TO 2014 RESERVES</b>	<b>2024</b>	<b>+ 8 years</b>	<b>MINING PERMIT TO 2016 RESERVES</b>
	<b>1.56Moz<sup>1</sup></b>	<b>+ 2.28Moz<sup>2</sup></b>	<b>2032</b>
<b>2014 MINERAL RESOURCES</b>	<b>3.43Moz<sup>1</sup></b>	<b>+ 2.24Moz<sup>2</sup></b>	<b>3.20Moz<sup>3</sup></b>
			<b>2016 MINERAL RESOURCES</b>
			<b>5.04Moz<sup>3</sup></b>

*July 2015 – June 2017*

<b>PURCHASE PRICE</b>	<b>A\$703M</b>	<b>GOLD PRODUCTION</b>	<b>501koz</b>	<b>ADDITIONAL UPSIDE</b>
		<b>NET MINE CASH FLOW</b>	<b>A\$322M</b>	- CO-TREAT OXIDES
		<b>COST OF RESERVE ADDITIONS</b>	<b>A\$14/oz</b>	- INCREASE THROUGHPUT
				- E41, E46, GALWAY/REGAL

1. Barrick (Australia Pacific) Pty Limited estimate depleted to 31 December 2014 - refer to ASX release 26 Aug 2015 entitled "Resources and Reserves Increased at Cowal" available to view at [www.asx.com.au](http://www.asx.com.au)

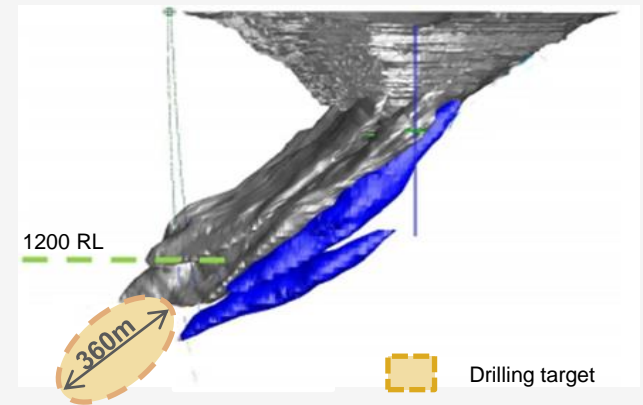
2. Prior to mining depletion

3. Depleted to 31 December 2016

# Ernest Henry

- Large scale, long life, copper-gold asset operated by Glencore
- Approximately A\$600 million recently invested by Glencore in expanding the underground mine to 6.4Mtpa
- Evolution's economic interest acquired 1 November 2016:
  - 100% of gold and 30% of copper and silver produced over 11 year life of mine (LOM) plan
- Annual payable production (Evolution's interest):
  - 80 – 85koz Au and 18 – 20kt Cu
- Upside opportunities through potential mine life extensions and exploration joint venture
  - Evolution has a 49% interest in all gold, copper and silver production beyond current LOM area

Ernest Henry ore body looking west

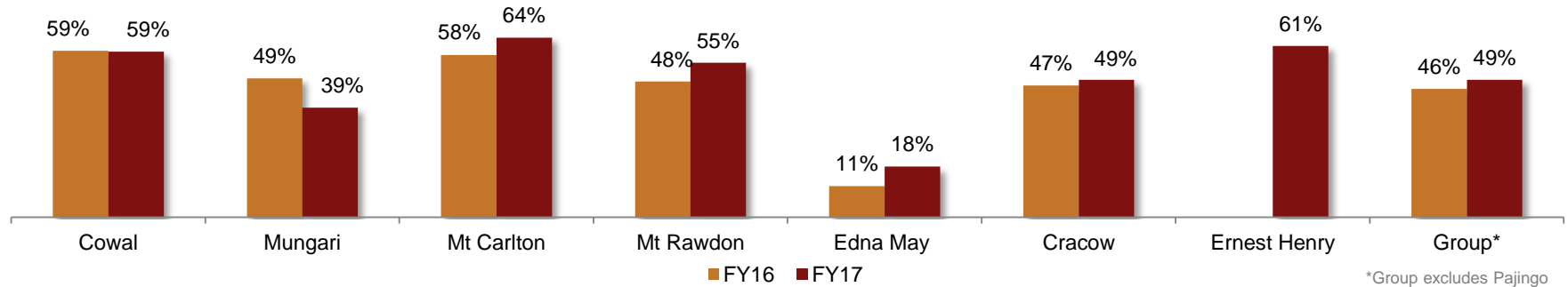


## A\$47.7 million

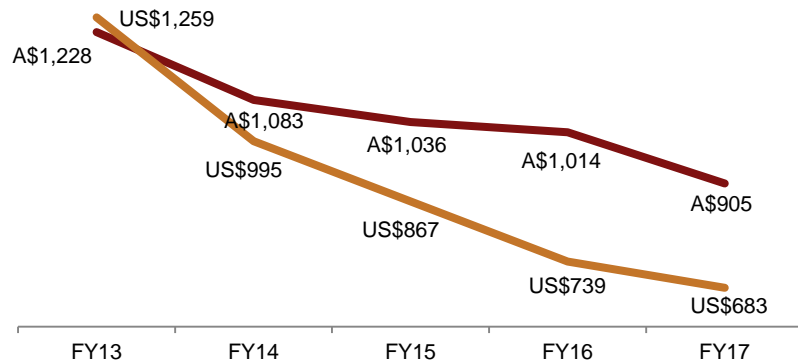
*June 2017 quarter net mine cash flow  
from Evolution's interest*

# High margin business

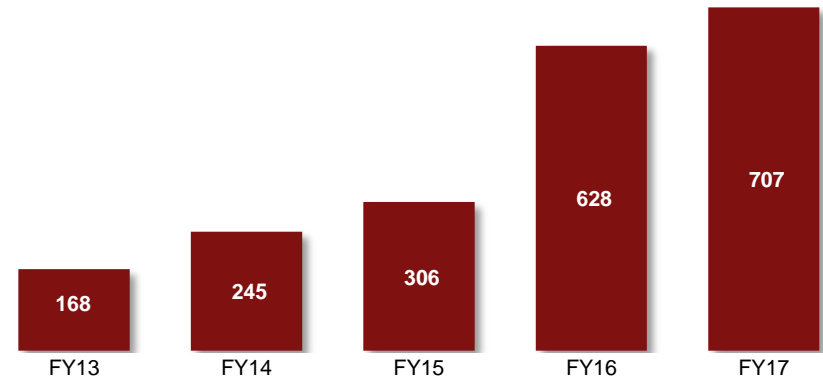
## EBITDA Margin



## Group AISC<sup>1</sup> (per ounce)



## Operating Mine Cash Flow (A\$M)

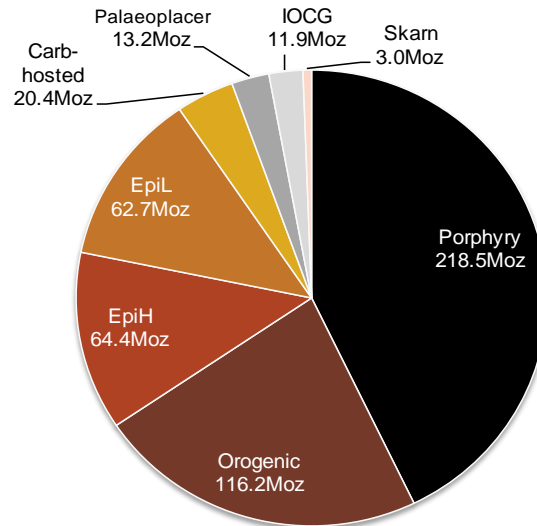


<sup>1</sup> All US\$ values calculated using the average AUD:USD FX rate in the relevant financial year

# The discovery paradox

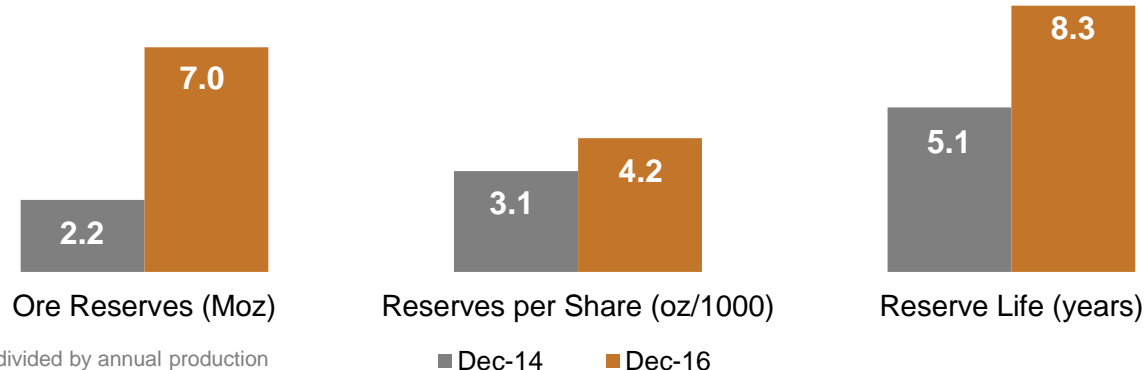
- 60 gold deposits exceeding two million ounces discovered between 1997 and 2011
  - Approximately 500 million ounces of gold or copper-gold resource inventory
  - Porphyry deposits accounted for 43%
    - Only one of these porphyry deposits has since been developed – Oyu Tolgoi

**Gold discoveries >2 Moz  
Host rock resource inventory  
1997 – 2011**



# Reserve growth

- Organic growth through intensive discovery and resource definition drilling programs
- Acquisition of high quality, low cost ounces
- December 2014 → December 2016:
  - Ore Reserves increased by 218%
  - Reserves per share increased by 33%
  - Reserve life<sup>1</sup> increased by 63%
- Ore Reserves calculated using conservative gold price assumption of A\$1,350/oz

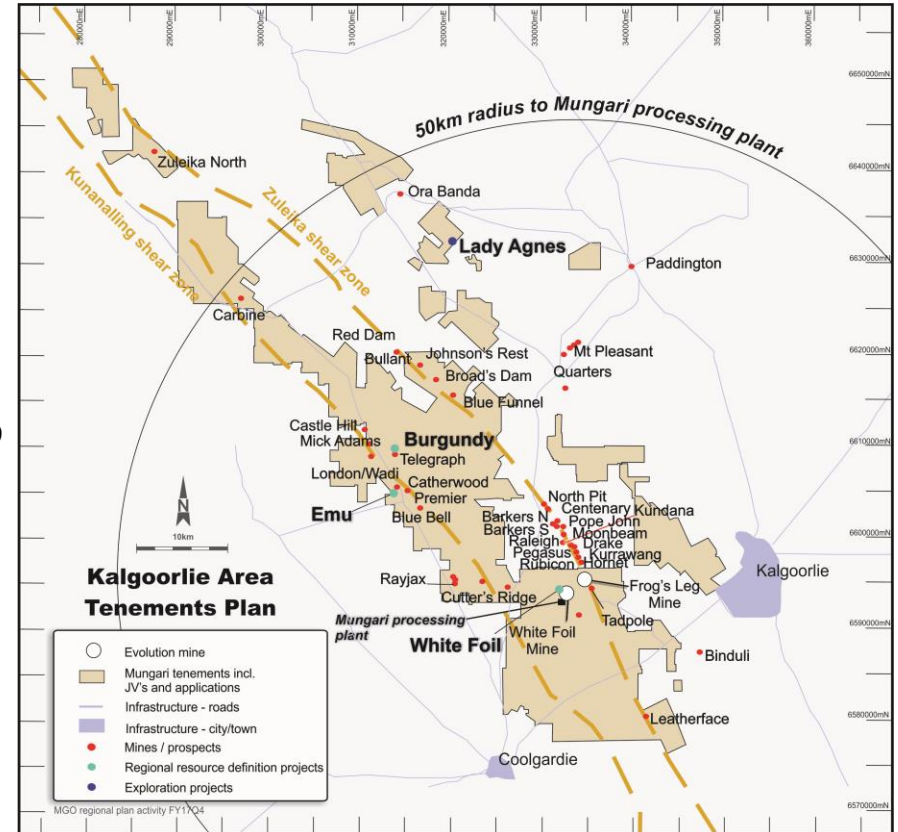


1. Reserve life = Ore Reserves divided by annual production

# Mungari exploration

- FY17 aggressive exploration program delivered strong results
- >A\$19M expenditure & >150km drilling
- Resource definition drilling extends high grade mineralisation beyond existing resources
  - Emu – 23.7m (14.2m etw) grading 13.7g/t Au (EMUD004)
  - Burgundy – 21.0m (17.9m etw) grading 5.1 g/t Au (BURC076)
- Discovery drilling indicates potential extensions to historic open cut
  - Lady Agnes – 5m (4.5m etw) @ 8.3g/t Au
  - Gravity survey completed
  - Follow up drilling has commenced

This information is extracted from the report entitled “Quarterly Report for the period ending 30 June 2017” released to ASX on 20 July 2017 and is available to view on [www.asx.au](http://www.asx.au). The reported intervals are a downhole width as true widths are not currently known. An estimated true width (“etw”) is provided. The Company confirms that it is not aware of any new information or data that materially affects the information included in the Report



**Location map of Mungari regional projects and drilling targets**

# Vision



Be known as a company that is good for your career

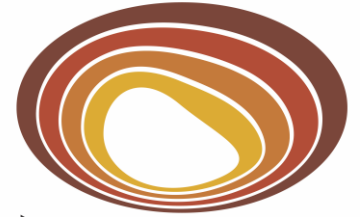
Move meaningfully down the Bradley curve for risk

Improve operational efficiency and productivity

Develop an ore body we have discovered

*Inspired people creating Australia's premier gold company*





**Evolution**  
MINING

**ASX code: EVN**  
**[www.evolutionmining.com.au](http://www.evolutionmining.com.au)**

# Evolution Gold Ore Reserves



Gold			Proved			Probable			Total Reserve			Competent Person
Project	Type	Cut-Off	Tonnes (Mt)	Gold Grade (g/t)	Gold Metal (koz)	Tonnes (Mt)	Gold Grade (g/t)	Gold Metal (koz)	Tonnes (Mt)	Gold Grade (g/t)	Gold Metal (koz)	
Cowal <sup>1</sup>	Open pit	0.4	43.70	0.71	994	73.02	0.94	2,207	116.71	0.85	3,200	1
Cracow <sup>1</sup>	Underground	3.5	0.34	6.54	71	0.71	5.25	120	1.05	5.67	192	2
Edna May <sup>1</sup>	Open pit	0.5	-	-	-	6.88	1.01	224	6.88	1.01	224	3
Edna May <sup>1</sup>	Underground	2.5	-	-	-	1.34	4.69	202	1.34	4.69	202	7
<b>Edna May<sup>1</sup></b>	<b>Total</b>		-	-	-	<b>8.22</b>	<b>1.61</b>	<b>426</b>	<b>8.22</b>	<b>1.61</b>	<b>426</b>	
Mt Carlton <sup>1</sup>	Open pit	0.8	-	-	-	4.67	4.60	691	4.67	4.60	691	4
Mt Carlton <sup>1</sup>	Underground	3.7	-	-	-	0.17	7.77	42	0.17	7.77	42	7
<b>Mt Carlton<sup>1</sup></b>	<b>Total</b>		-	-	-	<b>4.84</b>	<b>4.71</b>	<b>733</b>	<b>4.84</b>	<b>4.71</b>	<b>733</b>	
<b>Mt Rawdon<sup>1</sup></b>	<b>Open pit</b>	<b>0.3</b>	<b>1.70</b>	<b>0.60</b>	<b>33</b>	<b>30.99</b>	<b>0.84</b>	<b>840</b>	<b>32.69</b>	<b>0.83</b>	<b>873</b>	<b>5</b>
Mungari <sup>1</sup>	Underground	2.9	0.45	6.01	87	1.10	4.88	173	1.55	5.21	260	6
Mungari <sup>1</sup>	Open pit	0.7	0.58	0.93	18	5.19	1.69	282	5.77	1.61	299	6
Mungari <sup>1</sup>	Regional	0.85	-	-	-	0.98	1.35	43	0.98	1.35	43	6
<b>Mungari<sup>1</sup></b>	<b>Total</b>		<b>1.03</b>	<b>3.15</b>	<b>105</b>	<b>7.27</b>	<b>2.13</b>	<b>498</b>	<b>8.30</b>	<b>2.25</b>	<b>602</b>	
<b>Ernest Henry<sup>2</sup></b>	<b>Underground</b>	<b>0.9</b>	<b>7.15</b>	<b>0.71</b>	<b>163</b>	<b>52.30</b>	<b>0.48</b>	<b>801</b>	<b>59.45</b>	<b>0.50</b>	<b>964</b>	<b>8</b>
	<b>Total</b>		<b>53.92</b>	<b>0.79</b>	<b>1,366</b>	<b>177.35</b>	<b>0.99</b>	<b>5,624</b>	<b>231.27</b>	<b>0.94</b>	<b>6,990</b>	

Note: Data is reported to significant figures to reflect appropriate precision and may not sum precisely due to rounding

1. Includes stockpiles

2. This information is extracted from the report entitled "Annual Mineral Resources and Ore Reserve Statement" released to ASX on 20 April 2017 and available to view at [www.asx.com.au](http://www.asx.com.au)

3. This information is extracted from the report entitled "Glencore Resources and Reserves as at 31 December 2016" released February 2017 and available to view at [www.glencore.com](http://www.glencore.com). Ernest Henry is reported at 0.9 % CuEq

**Group Ore Reserve Competent Person Notes refer to: 1. Jason Floyd; 2. Sam Myers; 3. Guy Davies; 4. Tony Wallace; 5. Dimitri Tahan; 6. Matt Varvari; 7. Ian Patterson; 8. Alexander Campbell (Glencore)**

The Company confirms that it is not aware of any new information or data that materially affects the information included in the Report and that all material assumptions and technical parameters underpinning the estimates in the Report continue to apply and have not materially changed. The Company confirms that the form and context in which the Competent Persons' findings are presented have not been materially modified from the Report

# Evolution Gold Mineral Resources



Gold			Measured			Indicated			Inferred			Total Resource			Competent Person
Project	Type	Cut-off	Tonnes (Mt)	Gold Grade (g/t)	Gold Metal (koz)	Tonnes (Mt)	Gold Grade (g/t)	Gold Metal (koz)	Tonnes (Mt)	Gold Grade (g/t)	Gold Metal (koz)	Tonnes (Mt)	Gold Grade (g/t)	Gold Metal (koz)	
Cowal <sup>1</sup>	Total	0.4	43.70	0.71	994	129.71	0.93	3,861	4.24	1.35	184	177.65	0.88	5,039	1
Cracow <sup>1</sup>	Total	2.8	0.24	10.89	83	1.21	6.64	258	1.85	3.06	181	3.29	4.94	522	2
Edna May <sup>1</sup>	Open pit	0.4	–	–	–	15.96	0.95	487	2.19	0.85	60	18.15	0.94	547	
Edna May	Underground	2.5	–	–	–	1.12	7.68	278	0.09	7.63	23	1.22	7.68	301	
<b>Edna May</b>	<b>Total</b>		–	–	–	<b>17.09</b>	<b>1.39</b>	<b>765</b>	<b>2.28</b>	<b>1.13</b>	<b>83</b>	<b>19.37</b>	<b>1.36</b>	<b>848</b>	<b>4</b>
Mt Carlton <sup>1</sup>	Open pit	0.35	0.52	1.67	28	8.94	2.74	788	0.74	4.48	107	10.21	2.81	923	
Mt Carlton	Underground	2.4	–	–	–	0.16	8.01	42	0.05	8.36	14	0.22	8.09	56	
<b>Mt Carlton</b>	<b>Total</b>		<b>0.52</b>	<b>1.67</b>	<b>28</b>	<b>9.10</b>	<b>2.84</b>	<b>830</b>	<b>0.79</b>	<b>4.76</b>	<b>121</b>	<b>10.43</b>	<b>2.92</b>	<b>979</b>	<b>5</b>
<b>Mt Rawdon<sup>1</sup></b>	<b>Total</b>	<b>0.2</b>	<b>1.70</b>	<b>0.60</b>	<b>32</b>	<b>45.60</b>	<b>0.74</b>	<b>1,089</b>	<b>3.49</b>	<b>0.58</b>	<b>65</b>	<b>50.79</b>	<b>0.73</b>	<b>1,186</b>	<b>6</b>
Mungari <sup>1</sup>	Open pit	0.5	0.58	0.93	17	6.38	1.74	357	0.04	0.75	1	7.00	1.67	376	
Mungari <sup>1</sup>	Underground	2.5/1.5	0.97	7.88	247	3.98	3.56	456	1.60	2.19	113	6.55	3.87	815	
<b>Mungari<sup>1</sup></b>	<b>Total</b>		<b>1.55</b>	<b>5.29</b>	<b>264</b>	<b>10.35</b>	<b>2.44</b>	<b>813</b>	<b>1.64</b>	<b>2.16</b>	<b>114</b>	<b>13.55</b>	<b>2.73</b>	<b>1,191</b>	<b>3</b>
<b>Mungari Regional</b>	<b>Total</b>	<b>0.5</b>	–	–	–	<b>32.47</b>	<b>1.01</b>	<b>1,040</b>	<b>11.44</b>	<b>1.50</b>	<b>552</b>	<b>43.91</b>	<b>1.13</b>	<b>1,592</b>	<b>3</b>
Ernest Henry <sup>2</sup>	Total	0.9	12.10	0.70	272	68.70	0.59	1,303	9.00	0.50	145	89.80	0.60	1,720	7
Marsden	Total		–	–	–	160.00	0.21	1,070	15.00	0.07	30	180.00	0.20	1,100	8
<b>Total</b>			<b>59.81</b>	<b>0.87</b>	<b>1,673</b>	<b>474.24</b>	<b>0.72</b>	<b>11,029</b>	<b>49.73</b>	<b>0.92</b>	<b>1,475</b>	<b>588.79</b>	<b>0.75</b>	<b>14,178</b>	

Note: Data is reported to significant figures to reflect appropriate precision and may not sum precisely due to rounding. Mineral Resources are reported inclusive of Ore Reserves.

1. Includes stockpiles

2. This information is extracted from the report entitled "Annual Mineral Resources and Ore Reserve Statement" released to ASX on 20 April 2017 available to view at [www.asx.com.au](http://www.asx.com.au).

3. This information is extracted from the report entitled "Glencore Resources and Reserves as at 31 December 2016" released February 2017 and available to view at [www.glencore.com](http://www.glencore.com). Ernest Henry is reported at 0.9% CuEq

Group Mineral Resources Competent Person Notes refer to 1. Joseph Booth; 2. Shane Pike; 3. Andrew Engelbrecht; 4. Greg Rawlinson; 5. Matthew Obiri-Yeboah; 6. Hans Andersen; 7. Colin Stelzer (Glencore); 8. Michael Andrew Full details of the Ernest Henry Mineral Resources and Ore Reserves are provided in the report entitled "Glencore Resources and Reserves as at 31 December 2016" released February 2017 and available to view at [www.glencore.com](http://www.glencore.com).

The Company confirms that it is not aware of any new information or data that materially affects the information included in the Report and that all material assumptions and technical parameters underpinning the estimates in the Report continue to apply and have not materially changed. The Company confirms that the form and context in which the Competent Persons' findings are presented have not been materially modified from the Report

# Evolution Copper Reserves and Resources



## Group Copper Ore Reserves Statement

Copper			Proved			Probable			Total Reserve			Competent Person
Project	Type	Cut-Off	Tonnes (Mt)	Copper Grade (%)	Copper Metal (kt)	Tonnes (Mt)	Copper Grade (%)	Copper Metal (kt)	Tonnes (Mt)	Copper Grade (%)	Copper Metal (kt)	
Ernest Henry <sup>2</sup>	Total	0.9	2.13	1.41	30	15.69	0.96	151	17.82	1.02	182	8
Mt Carlton <sup>1</sup>	Open pit	0.8	-	-	-	4.67	0.62	29	4.67	0.62	29	4
Mt Carlton <sup>1</sup>	Underground	3.7	-	-	-	0.17	0.70	1	0.17	0.70	1	7
<b>Mt Carlton<sup>1</sup></b>	<b>Total</b>		-	-	-	<b>4.84</b>	<b>0.62</b>	<b>30</b>	<b>4.84</b>	<b>0.62</b>	<b>30</b>	
	<b>Total</b>		<b>2.13</b>	<b>1.41</b>	<b>30</b>	<b>20.53</b>	<b>0.88</b>	<b>181</b>	<b>22.66</b>	<b>0.94</b>	<b>212</b>	

## Group Copper Mineral Resources Statement

Copper			Measured			Indicated			Inferred			Total Resource			Competent Person
Project	Type	Cut-Off	Tonnes (Mt)	Copper Grade (%)	Copper Metal (kt)	Tonnes (Mt)	Copper Grade (%)	Copper Metal (kt)	Tonnes (Mt)	Copper Grade (%)	Copper Metal (kt)	Tonnes (Mt)	Copper Grade (%)	Copper Metal (kt)	
Marsden <sup>1</sup>	Total	-	-	-	-	160.00	0.40	640	15.00	0.19	30	180.00	0.38	670	8
Ernest Henry <sup>2</sup>	Total	0.9	3.63	1.33	48	20.61	1.15	237	2.70	1.10	30	26.94	1.17	315	7
Mt Carlton <sup>1</sup>	Open pit	0.35	0.52	0.25	1	8.94	0.44	40	0.74	0.82	6	10.21	0.47	47	
Mt Carlton	Underground	2.4	-	-	-	0.16	0.74	1	0.05	1.74	1	0.22	0.98	2	
<b>Mt Carlton</b>	<b>Total</b>		<b>0.52</b>	<b>0.25</b>	<b>1</b>	<b>9.10</b>	<b>0.45</b>	<b>41</b>	<b>0.79</b>	<b>0.89</b>	<b>7</b>	<b>10.43</b>	<b>0.47</b>	<b>49</b>	<b>5</b>
	<b>Total</b>		<b>4.15</b>	<b>1.18</b>	<b>49</b>	<b>189.71</b>	<b>0.48</b>	<b>918</b>	<b>18.49</b>	<b>0.36</b>	<b>67</b>	<b>217.37</b>	<b>0.48</b>	<b>1,034</b>	

Note: Data is reported to significant figures to reflect appropriate precision and may not sum precisely due to rounding. Mineral Resources are reported inclusive of Ore Reserves. <sup>1</sup> Includes stockpiles <sup>2</sup> Ernest Henry Operation cut-off 0.9% CuEq

1. This information is extracted from the report entitled "Glencore Resources and Reserves as at 31 December 2016" released February 2017 available to view at [glencore.com](http://glencore.com)". EHO is reported at 0.9 % CuEq.

Group Ore Reserves Competent Person Notes refer to: 4. Tony Wallace; 7. Ian Patterson; 8. Alexander Campbell (Glencore)

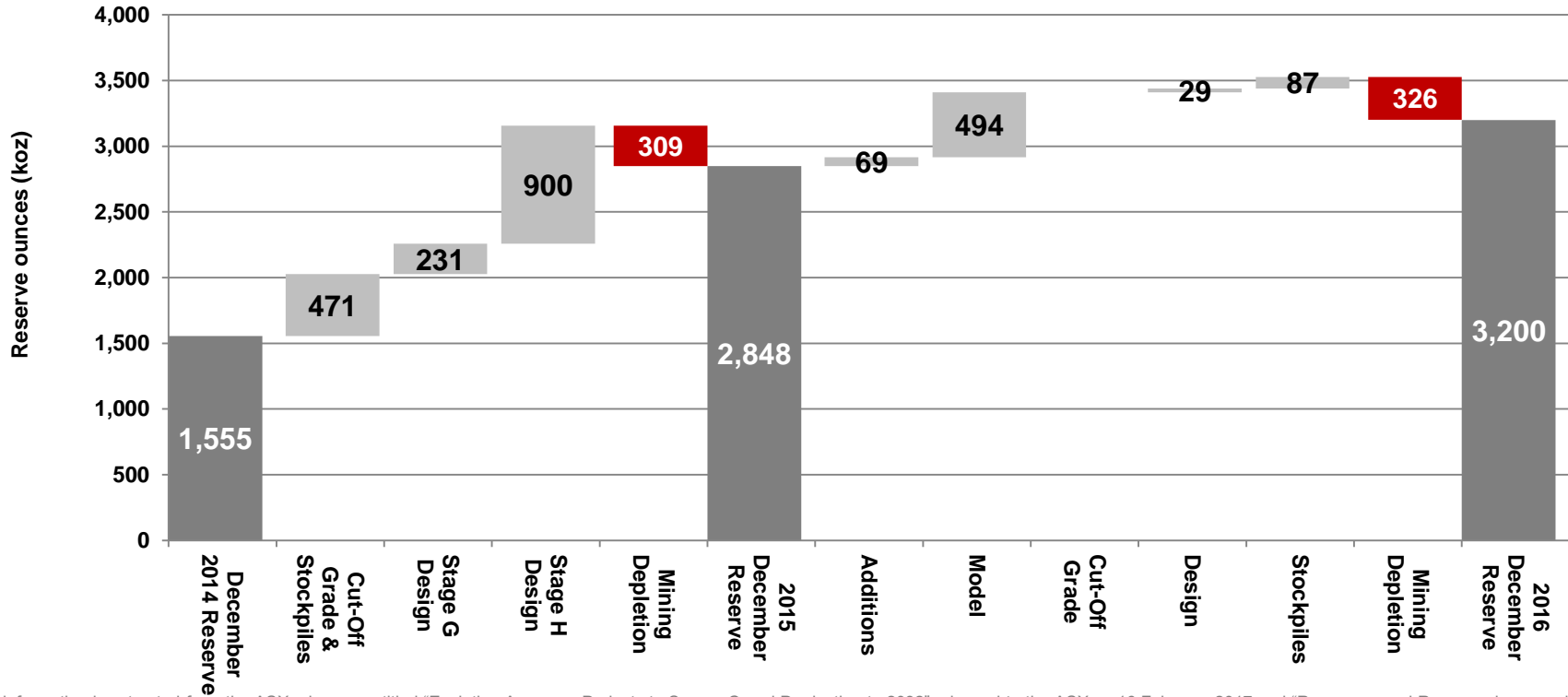
Group Mineral Resources Competent Person Notes refer to 5. Matthew Obiri-Yeboah; 7. Colin Stelzer (Glencore); 8. Michael Andrew

Full details of the Ernest Henry Mineral Resources and Ore Reserves are provided in the report entitled "Glencore Resources and Reserves as at 31 December 2016" released February 2017 and available to view at [www.glencore.com](http://www.glencore.com).

The Company confirms that it is not aware of any new information or data that materially affects the information included in the Report and that all material assumptions and technical parameters underpinning the estimates in the Report continue to apply and have not materially changed. The Company confirms that the form and context in which the Competent Persons' findings are presented have not been materially modified from the Report.

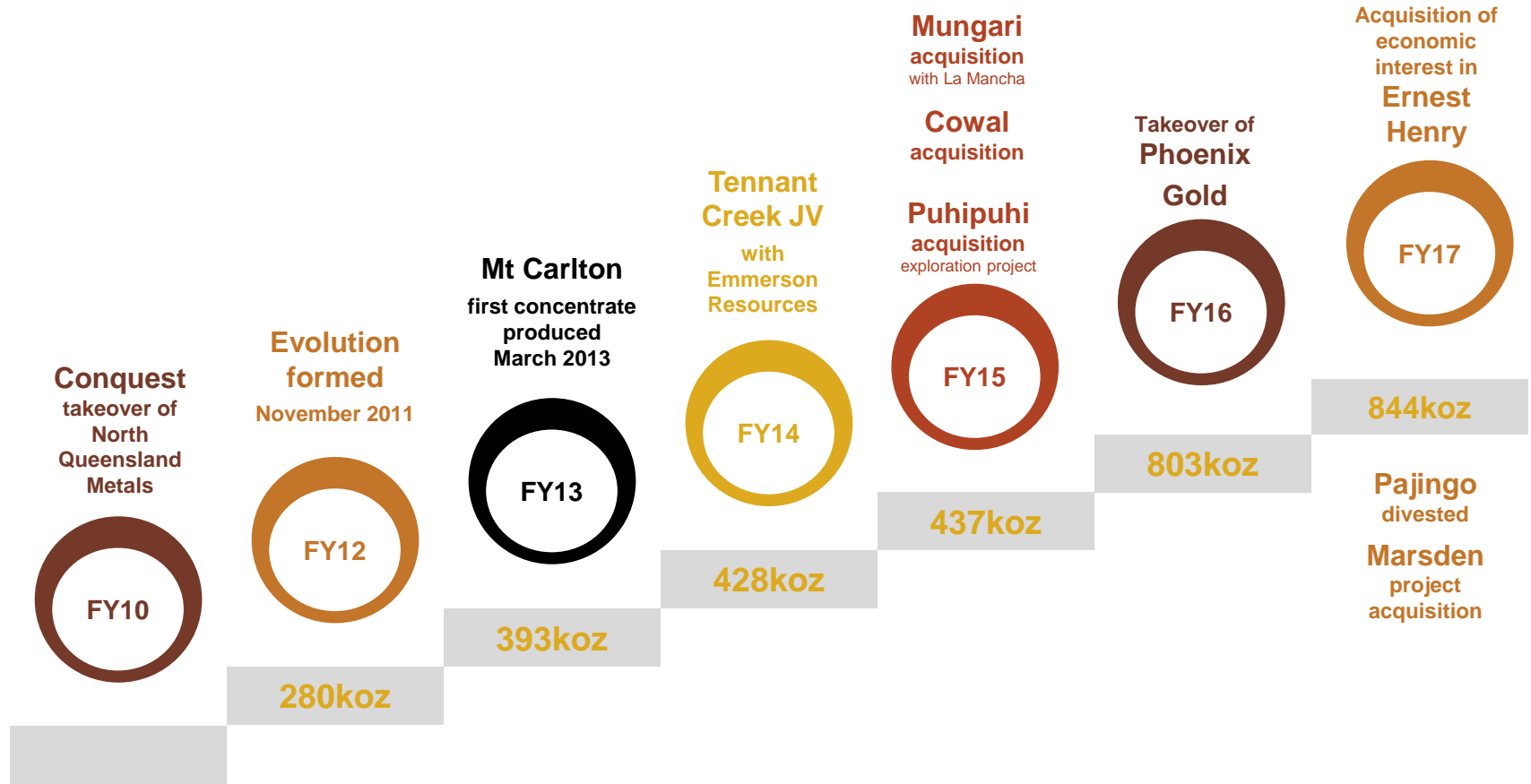
# Cowal Ore Reserve growth

## Cowal Ore Reserve Changes December 2014 to December 2016



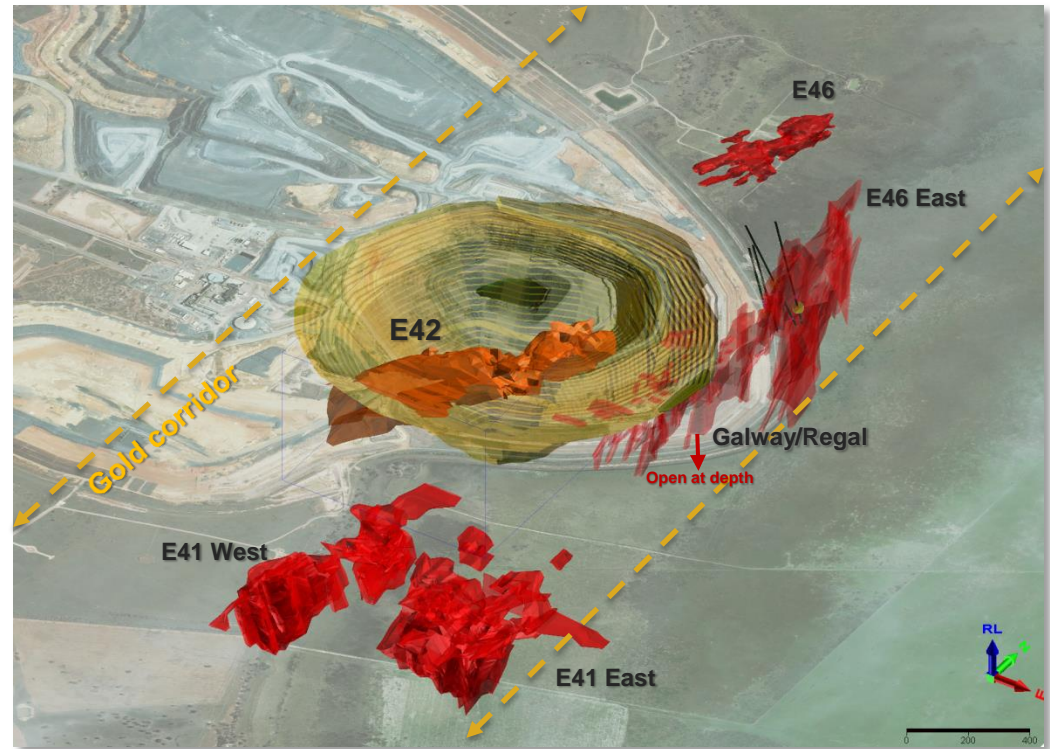
This information is extracted from the ASX releases entitled "Evolution Approves Projects to Secure Cowal Production to 2032" released to the ASX on 16 February 2017 and "Resources and Reserves increased at Cowal" released to the ASX on 26 August 2015 and available to view at [www.asx.com.au](http://www.asx.com.au)

# Our Evolution



# Additional opportunities at Cowal

- Assessing further asset enhancement opportunities including:
  - Co-treatment of high-grade oxide stockpiles to bring forward treatment
    - Increased gold production of 10 – 12koz per annum
  - Secondary crushing
    - Increase throughput to 9.0 – 9.5Mtpa to bring forward treatment of low-grade stockpiles
  - Continued drilling to convert significant mineral endowment outside of existing reserves
    - E46, E41, Galway and Regal



*Cowal gold mineralisation and E42 open pit outline*

# Mt Rawdon



**SCHEDULED  
COMPLETION**

**2022**

**+ 4 years**

**SCHEDULED  
COMPLETION**

**2026**

**2011  
RESERVES**

**0.9Moz**

**Replacing depletion**

**2016  
RESERVES**

**0.9Moz**

**LOAD & HAUL**

**Contract**

**Cost benefits and improved  
efficiency**

**LOAD & HAUL**

**Owner operator**

**Resource drilling  
over 20 years**

**62km**

**Intensive drilling rates**

**Resource drilling  
in just 5 years**

**~40km**

**70%  
local  
workforce**

**Reliable  
producer  
~100kozpa  
since 2002**

**Increasing  
cash flow as  
strip ratio  
declines**

**>1.5Moz  
produced**

**+25 year  
mine life  
2001 to 2026**



# Cracow



<b>LIFE OF MINE</b>	<b>2014</b>	<b>+ 6 years</b>	<b>LIFE OF MINE</b>	<b>2020+</b>
<b>2011 RESERVES</b>	<b>0.2Moz</b>	<b>Replacing depletion</b>	<b>2016 RESERVES</b>	<b>0.2Moz</b>
<b>MINING</b>	<b>Contract</b>	<b>Cost benefits and productivity improvements</b>	<b>MINING</b>	<b>Owner operator</b>
<b>Resource drilling over 20 years</b>	<b>802km</b>	<b>Intensive drilling rates</b>	<b>Resource drilling in 5 years</b>	<b>&gt;290km</b>

Solid and predictable cash flow generation

Reliable producer >80kozpa since 2005

37% increase in ounces per employee since FY13

~1.2Moz produced

FY17 net mine cash flow A\$41M

Greenfields Exploration outside Cracow Field

# Edna May

- Turnaround progressing under new management post strategic review
- Significant increase in gold production and decrease in AISC in June 2017 quarter
- Production from underground to commence in FY18
- Mineral Resources 848koz Au
- Ore Reserves 426koz Au

