



REGIS RESOURCES LTD



DECEMBER 2017 QUARTERLY REPORT
& EXPLORATION UPDATE

DISCLAIMER & COMPETENT PERSONS STATEMENT

This presentation contains only a brief overview of Regis Resources Limited and its associated entities ("Regis or RRL") and their respective activities and operations. The contents of this presentation, including matters relating to the geology of Regis' projects, may rely on various assumptions and subjective interpretations which it is not possible to detail in this presentation and which have not been subject to any independent verification.

This presentation contains a number of forward-looking statements. Known and unknown risks and uncertainties, and factors outside of Regis' control, may cause the actual results, performance and achievements of Regis to differ materially from those expressed or implied in this presentation. To the maximum extent permitted by law, Regis does not warrant the accuracy, currency or completeness of the information in this presentation, nor the future performance of Regis, and will not be responsible for any loss or damage arising from the use of the information. The information contained in this presentation is not a substitute for detailed investigation or analysis of any particular issue. Current and potential investors and shareholders should seek independent advice before making any investment decision in regard to Regis or its activities.

The information in this presentation that relates to Exploration Results is extracted from the ASX announcement released 30 January 2018 entitled "Quarterly Report to 31 December 2017" and for which Competent Person's consents were obtained. The Competent Person's consents remain in place for subsequent releases by the Company of the same information in the same form and context, until the consent is withdrawn or replaced by a subsequent report and accompanying consent.

The information in this presentation that relates to Mineral Resources or Ore Reserves is extracted from the Mineral Resource and Ore Reserve Statement released to the Australian Securities Exchange on 14 July 2017 and the announcement entitled "Maiden Ore Reserve of 2.03 Million Ounces at McPhillamys Gold Project on 8 September 2017 and for which Competent Person's consents were obtained. The Competent Person's consents remain in place for subsequent releases by the Company of the same information in the same form and context, until the consent is withdrawn or replaced by a subsequent report and accompanying consent.

The Company confirms that it is not aware of any new information or data that materially affects the information included in the original ASX announcements released on 14 July 2017, 8 September 2017 and 30 January 2018, in the case of estimates or Mineral Resources or Ore Reserves, that all material assumptions and technical parameters underpinning the estimates in the original ASX announcement continue to apply and have not materially changed. The Company confirms that the form and context in which the Competent Person's findings are presented have not been materially modified from the original ASX announcement.

ASX announcements are available on the Company's website at www.regisresources.com.au



DUKETON CONTINUES TO DELIVER STRONG CASHFLOW

	Q2 FY18	Q1 FY18
Ore mined (Mbcm)	1.3	1.4
Waste mined (Mbcm)	4.2	5.1
Stripping ratio (w:o)	3.3	3.6
Ore mined (Mtonnes)	2.8	3.2
Ore milled (Mtonnes)	2.50	2.47
Head grade (g/t)	1.22	1.23
Recovery (%)	94	94
Gold production (ounces '000)	92	92
Cash cost (A\$/oz)	689	684
Cash cost inc royalty (A\$/oz)	768	745
All in Sustaining Cost (A\$/oz) ¹	855	861

OPERATIONS

- Q2 gold production 92,113 ounces, a Regis record
 - Consistent with Q1 (91,921 oz)
 - Run rate at top end of FY18 guidance of 335-365koz
- Q2 throughput, grade & recovery consistent with Q1
 - Q2 stripping ratio of 3.3 down 8% from Q1
 - Gloster & Erlistoun now in main ore zones
- H1 production of 184,034 oz, a Regis record
 - H2 expected to be slightly lower as grade at Gloster trends to reserve grade
 - On target for FY18 production mid-top of guidance

COSTS

- Q2 cash costs \$694/oz & AISC \$855/oz
 - Consistent with Q1 & below bottom of FY18 guidance

OPERATING CASH-FLOW

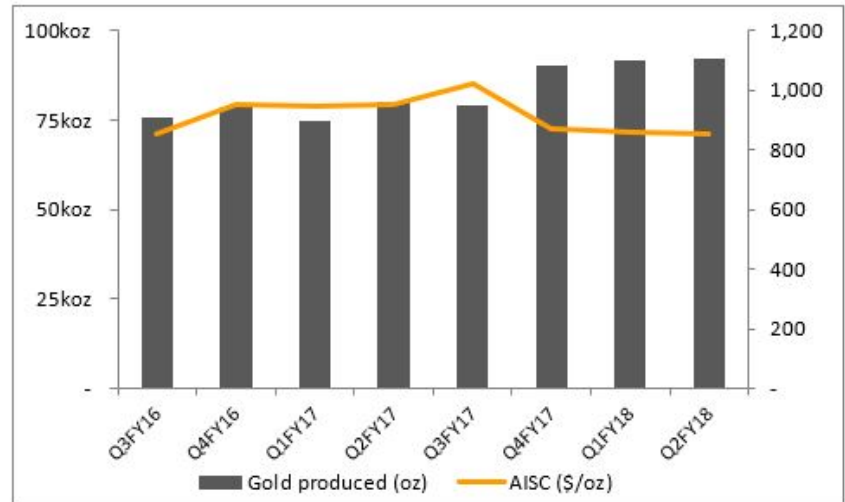
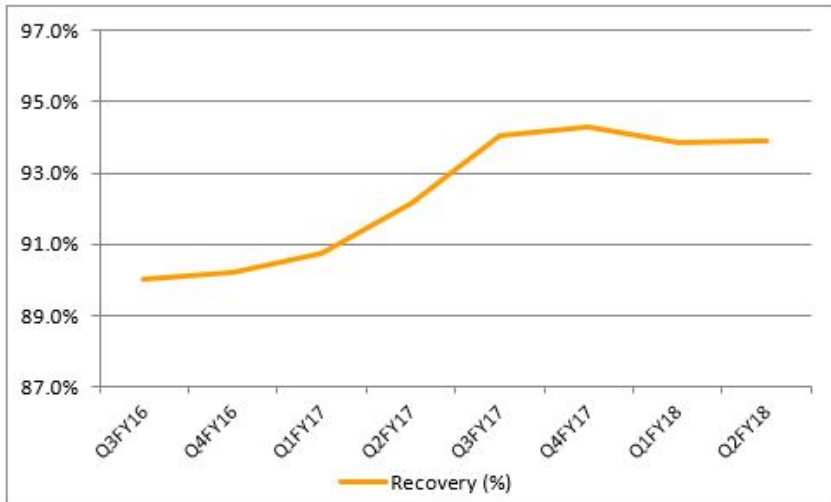
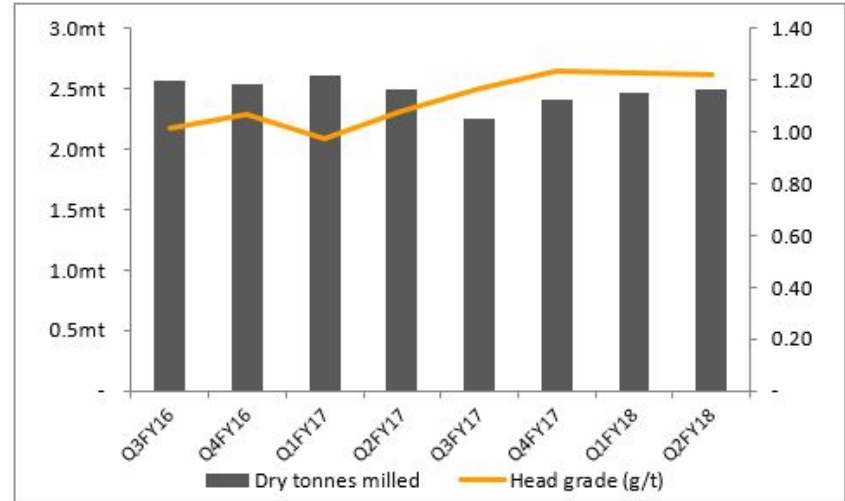
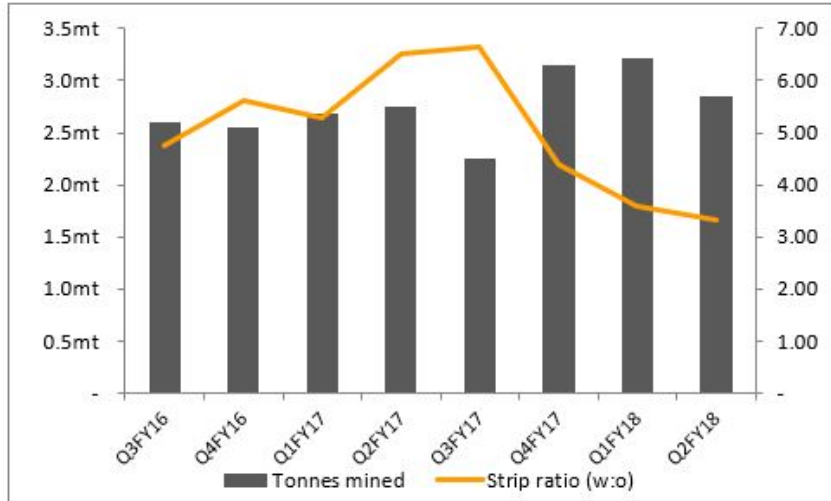
- Q2 operating cashflow \$83.8m (Q1: \$62.9m)
 - Delivered gold price A\$1,655 per ounce
 - Unwinding of circuit stocks working capital from Q1
 - Continued strong operating cashflow underpinning cash build and dividends

¹ AISC calculated on a per ounce of production basis

² operating cash flow is quoted under the Appendix 5B classification protocol and as such does not include payments for pre-strip and deferred mining costs as these are classified as investing activities.



DUKETON



FY2018 Q2 OPERATING RESULTS

	Duketon Northern Operations		Duketon Southern Operations		Total	
	Q2	Q1	Q2	Q1	Q2	Q1
Ore mined (Mbcm)	0.6	0.6	0.7	0.8	1.3	1.4
Waste mined (Mbcm)	1.2	1.2	2.9	3.9	4.2	5.1
Stripping ratio (w:o)	2.2	2.2	4.3	4.5	3.3	3.6
Ore mined (Mtonnes)	1.0	1.0	1.8	2.2	2.8	3.2
Ore milled (Mtonnes)	0.77	0.80	1.72	1.68	2.50	2.47
Head grade (g/t)	1.21	1.27	1.23	1.21	1.22	1.23
Recovery (%)	95.2	94.3	93.3	93.6	93.9	93.9
Gold production (ounces)	28,596	30,771	63,517	61,150	92,113	91,921
Cash cost (A\$/oz)	539	541	757	756	689	684
Cash cost inc royalty (A\$/oz)	610	598	839	818	768	745
All in Sustaining Cost (A\$/oz)	661	687	943	949	855	861



FY2018 Q2 OPERATING RESULTS

	Duketon Northern Operations		Duketon Southern Operations		Total	
	Q2	Q1	Q2	Q1	Q2	Q1
Ore mined (Mbcm)	0.6	0.6	0.7	0.8	1.3	1.4
Waste mined (Mbcm)	1.2	1.2	2.9	3.9	4.2	5.1
Stripping ratio (w:o)	2.2	2.2	4.3	4.5	3.3	3.6
Ore mined (Mtonnes)	1.0	1.0	1.8	2.2	2.8	3.2
Ore milled (Mtonnes)	0.77	0.80	1.72	1.68	2.50	2.47
Head grade (g/t)	1.21	1.27	1.23	1.21	1.22	1.23
Recovery (%)	95.2	94.3	93.3	93.6	93.9	93.9
Gold production (ounces)	28,596	30,771	63,517	61,150	92,113	91,921
Cash cost (A\$/oz)	539	541	757	756	689	684
Cash cost inc royalty (A\$/oz)	610	598	839	818	768	745
All in Sustaining Cost (A\$/oz)	661	687	943	949	855	861

DUKETON NORTHERN OPERATIONS

- Q2 gold production 28,596oz down 7% on Q1:
 - Grade down 5% to 1.21g/t due to Gloster pit moving out of higher grade supergene in to hypogene zone and trending towards remaining reserve grade
 - Q2 AISC of \$661 per ounce consistent with Q1 with a steady stripping ratio of 2.2:1



FY2018 Q2 OPERATING RESULTS

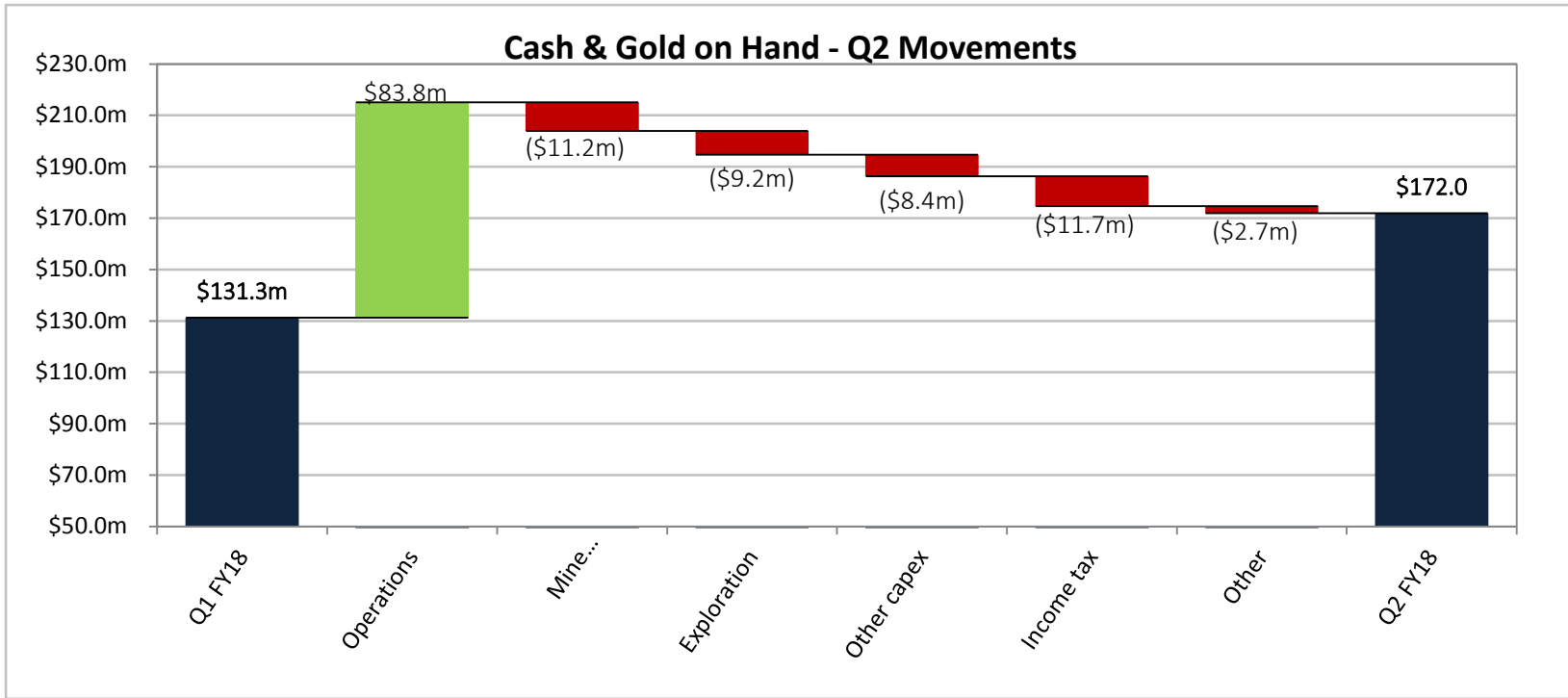
	Duketon Northern Operations		Duketon Southern Operations		Total	
	Q2	Q1	Q2	Q1	Q2	Q1
Ore mined (Mbcm)	0.6	0.6	0.7	0.8	1.3	1.4
Waste mined (Mbcm)	1.2	1.2	2.9	3.9	4.2	5.1
Stripping ratio (w:o)	2.2	2.2	4.3	4.5	3.3	3.6
Ore mined (Mtonnes)	1.0	1.0	1.8	2.2	2.8	3.2
Ore milled (Mtonnes)	0.77	0.80	1.72	1.68	2.50	2.47
Head grade (g/t)	1.21	1.27	1.23	1.21	1.22	1.23
Recovery (%)	95.2	94.3	93.3	93.6	93.9	93.9
Gold production (ounces)	28,596	30,771	63,517	61,150	92,113	91,921
Cash cost (A\$/oz)	539	541	757	756	689	684
Cash cost inc royalty (A\$/oz)	610	598	839	818	768	745
All in Sustaining Cost (A\$/oz)	661	687	943	949	855	861

DUKETON SOUTHERN OPERATIONS

- Q2 production 63,517oz, 4% higher than Q1:
 - Throughput 1.72mt, 2% higher than Q1 –plant optimisations and supply of softer Erlistoun oxide ore
- AISC of \$943/oz consistent with Q1 (\$949/oz)
 - Stripping ratio steady at 4.3:1 (Q1: 4.5) as Erlistoun now in main ore zones



CASHFLOW WATERFALL



Record quarterly cash-flow from operations of \$83.8m (Q1: \$62.9m)

- Higher delivered gold price in Q2: \$1,655/oz (Q1: \$1,623/oz)
 - Cashflow enhanced by reversal of gold in circuit build in working capital from Sept17 quarter.
- Effective cash build of \$44.3m after payment of \$3.6m for McPhillamys land & water licenses
Record end of quarter cash and bullion position of \$172m and no debt

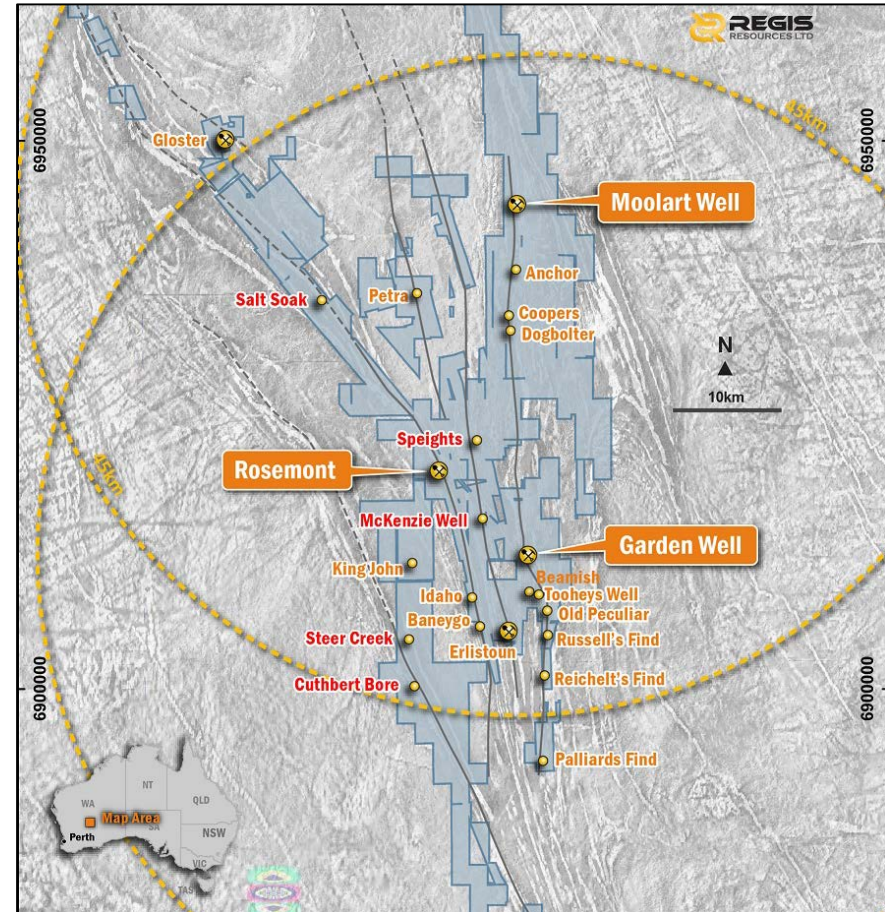


EXPLORATION UPDATE

DUKETON - SIGNIFICANT RESULTS IN Q2

Drilled 62,210m (Q1: 48,806m) on 17 gold projects

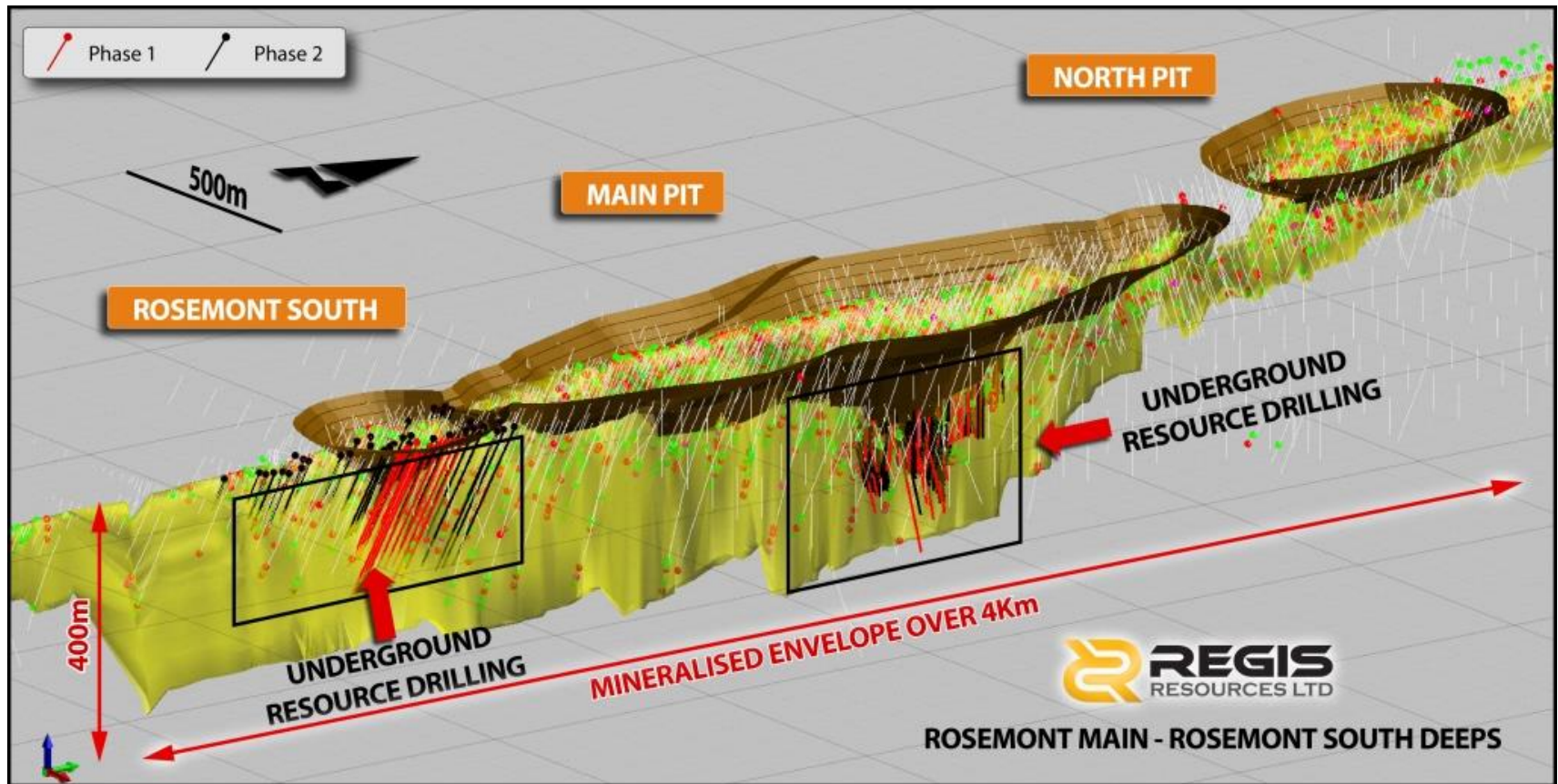
- Rosemont Underground
 - 6 DD holes drilled at RMT South
 - 19 RC & DD holes at RMT Main
 - Strong results & confirming geometry
 - Maiden u/g resource pending
- Baneygo satellite project
 - 6,444m of infill & extensional drilling
 - Significant results outside reserve including:
 - 17m @ 16.3g/t from 38m
 - 16m @ 2.00g/t from 57m
- Reichelts Find – 12km S of Garden Well
 - Encouraging results under historic open pit
 - 8m @ 3.38g/t from 163m
 - 7m @ 6.89g/t from 81m
 - Up to 1.4km of poorly tested strike
- Salt Soak – 18km NW of Rosemont
 - First pass regional AC/RC drilling
 - 2m @ 28.6g/t from 144m in poorly drilled area
- Drilling targeting Garden Well U/G to commence Q3



Proximity to 10mtpa milling infrastructure presents excellent exploration opportunity



ROSEMONT SOUTH & MAIN UNDERGROUND OPPORTUNITIES



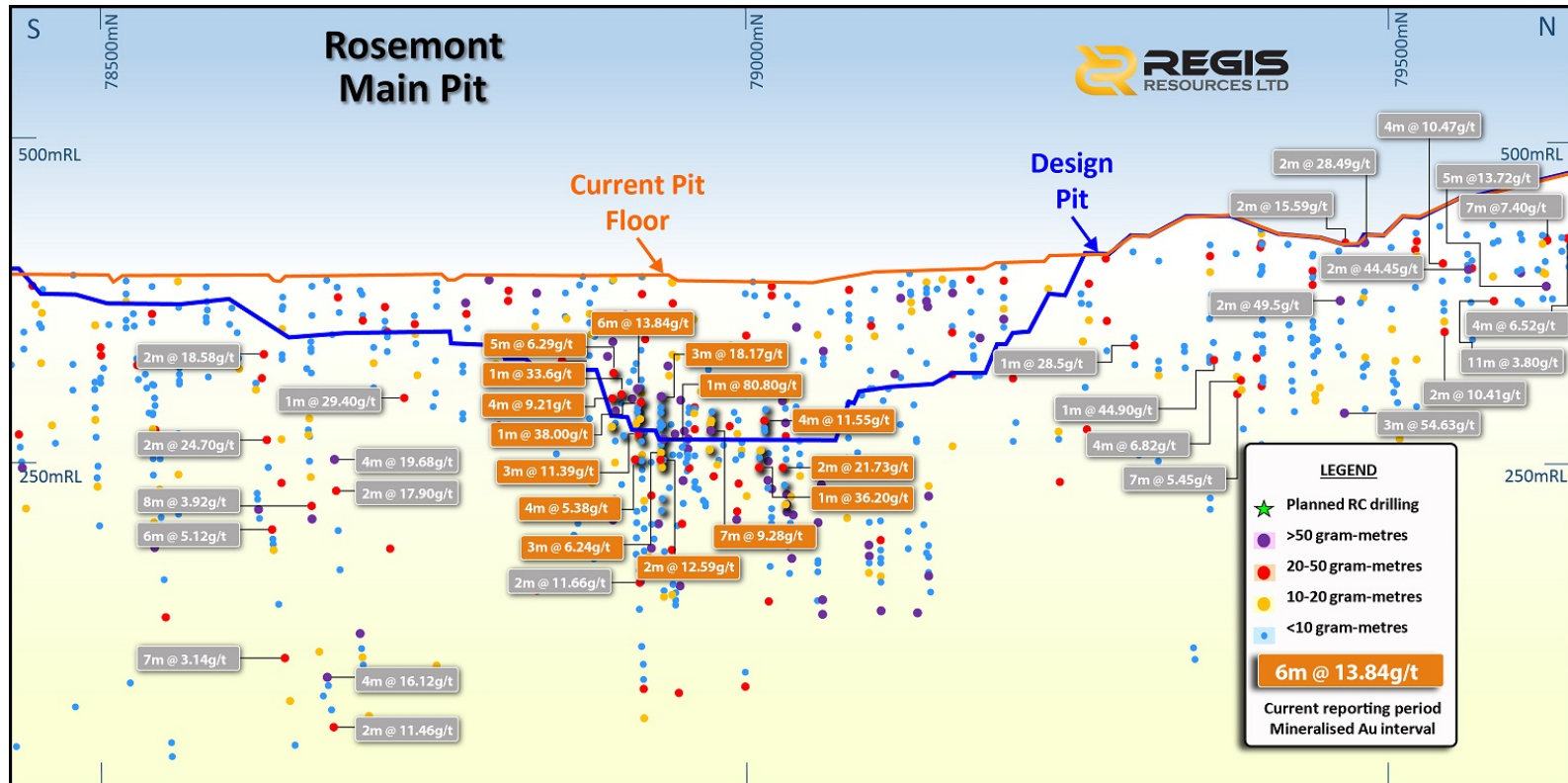
3D long section from south east showing planned Rosemont South & Main drilling, phase 1 and 2

Phase 1 drill programmes underway at Rosemont South and below Rosemont Main Pit:

- Returning numerous high grade intercepts
- Drilling to continue in Q3 and beyond



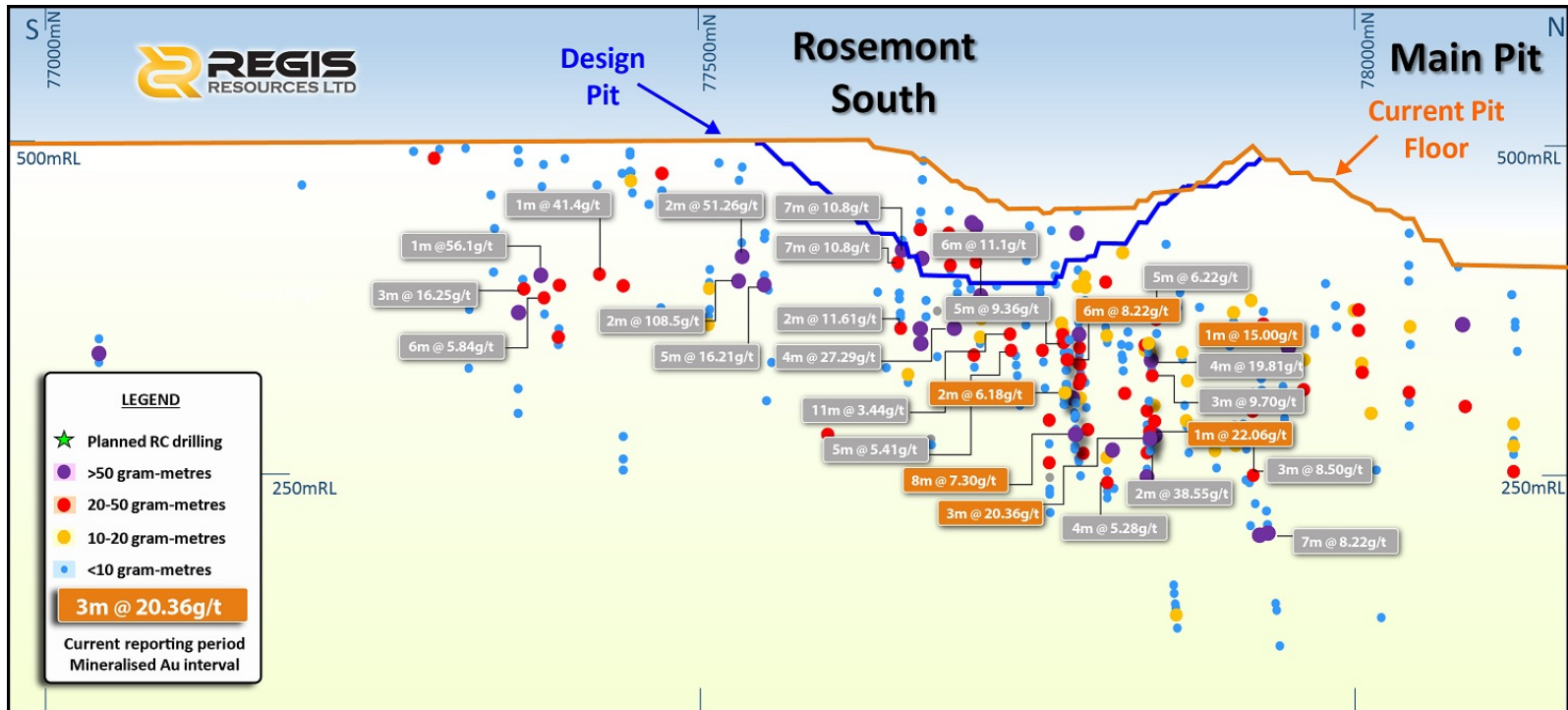
ROSEMONT UNDERGROUND PROJECT - MAIN PIT



POTENTIAL FOR UNDERGROUND MINING INVENTORY EXTENSION

- Testing high grade shoots 100-200m vertically below ultimate open pit design depth
- Holes drilled to date are encouraging for underground opportunities
- RMT Main & South - 25 holes (6,071m) of RC & DD in Q2 - high grade results continue

ROSEMONT UNDERGROUND PROJECT - SOUTH PIT

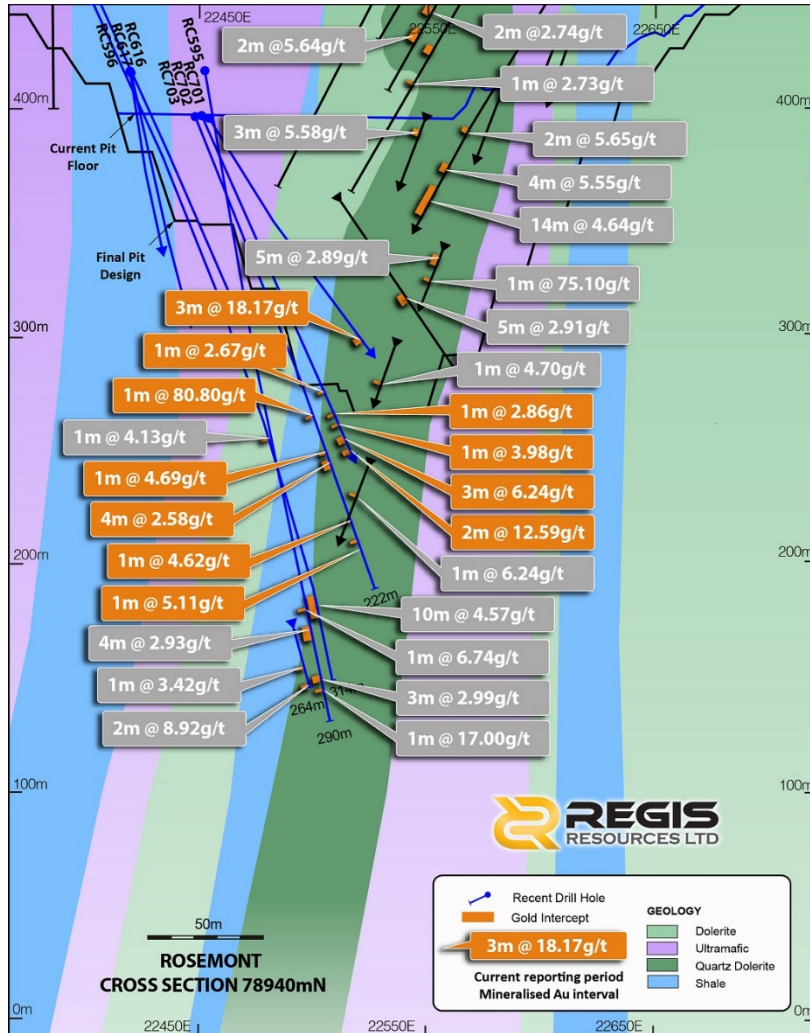


POTENTIAL FOR UNDERGROUND MINING INVENTORY EXTENSION

- Testing high grade shoots 100-200m vertically below ultimate open pit design depth
- Holes drilled to date are encouraging for underground opportunities
- RMT Main & South - 25 holes (6,071m) of RC & DD in Q2 - high grade results continue



ROSEMONT UNDERGROUND PROJECT – MAIN PIT



DRILL RESULTS IN Q2

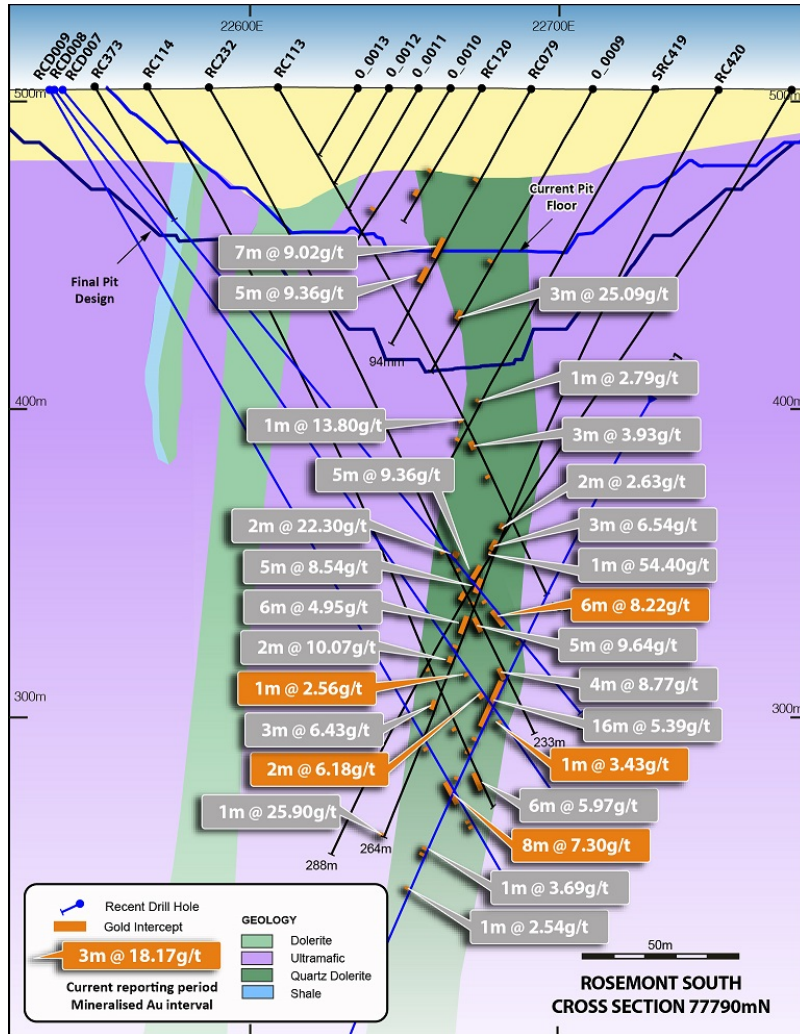
- Gold hosted in a steeply east dipping 345° trending quartz-dolerite unit
- Gold mineralised quartz-dolerite unit is up to 80m wide.
- Q2 drilling 19 DD & RC holes for 4,423m
- **Q2 Results (all outside reserves):**
 - 2m @ 21.73g/t. Au from 168m RLLRMRC694
 - 3m @ 6.24g/t. Au from 153m RLLRMRC702
 - 2m @ 12.59g/t. Au from 159m RLLRMRC702
 - 1m @ 80.80g/t. Au from 140m RLLRMRC703
 - 3m @ 11.39g/t. Au from 140m RLLRMRC704
- Drilling continuing - focus on establishing continuity and geometry of high grade mineralisation
- Maiden underground resource expected later in current quarter
- Mining scoping study underway



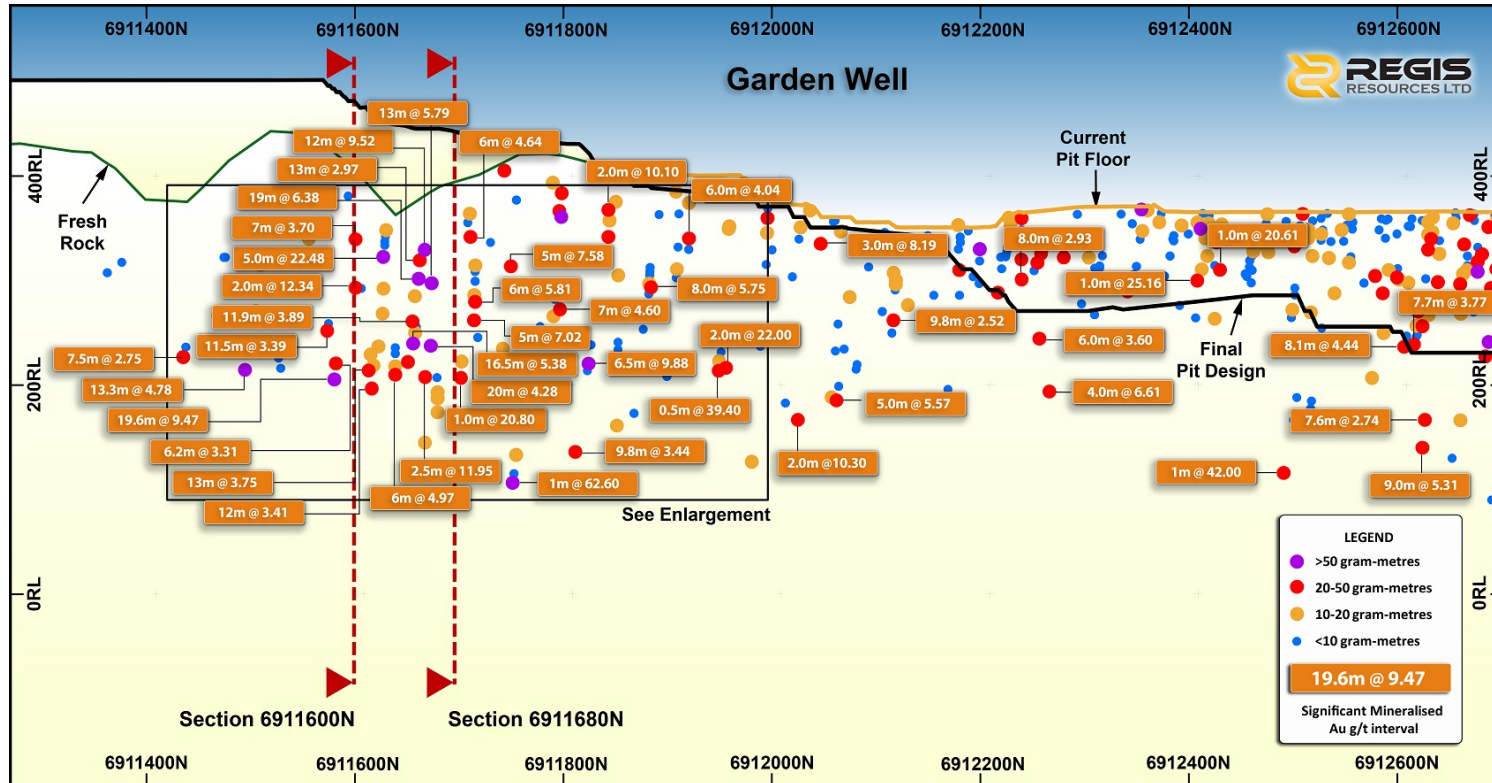
ROSEMONT UNDERGROUND PROJECT - SOUTH PIT

DRILL RESULTS IN Q2

- Gold hosted in a steeply east dipping 345° trending quartz-dolerite unit
- Gold mineralised quartz-dolerite unit is up to 80m wide.
- Q2 drilling 6 DD holes for 1,648m
- **Q2 Results (all outside reserves):**
 - 5.7m @ 8.22g/t. Au from 218m RRLMRCD007
 - 8.1m @ 7.30g/t. Au from 257m RRLMRCD009
 - 0.96m @ 22.06g/t. Au from 254m RRLMRCD012
 - 3.1m @ 20.36g/t. Au from 259m RRLMRCD012
- Drilling continuing - focus on establishing continuity and geometry of high grade mineralisation
- Maiden underground resource expected later in current quarter
- Mining scoping study underway



GARDEN WELL UNDERGROUND PROJECT

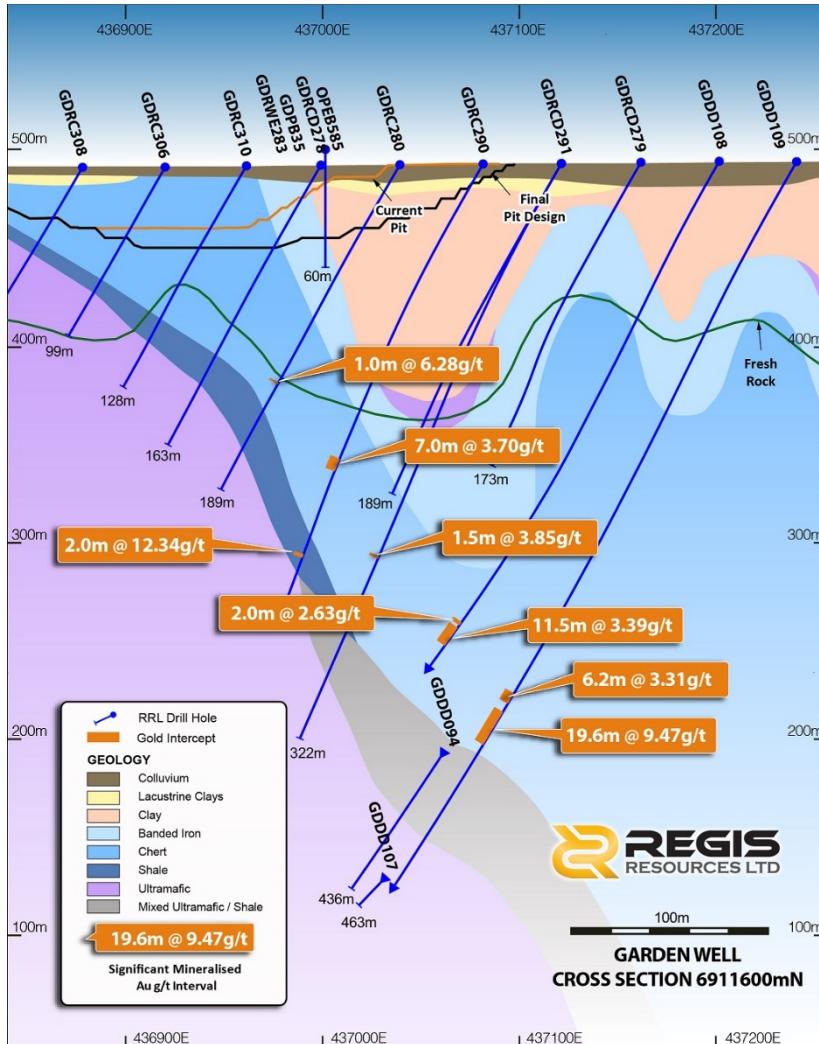


TARGETING HIGH GRADE ZONE BELOW GARDEN WELL PIT

- Very significant underground target below southern end of GW open pit
- Zone of continuous mineralisation 4-10m true widths & 300m N-S strike
- 100 – 300m below surface, dipping east and open to south



GARDEN WELL UNDERGROUND PROJECT

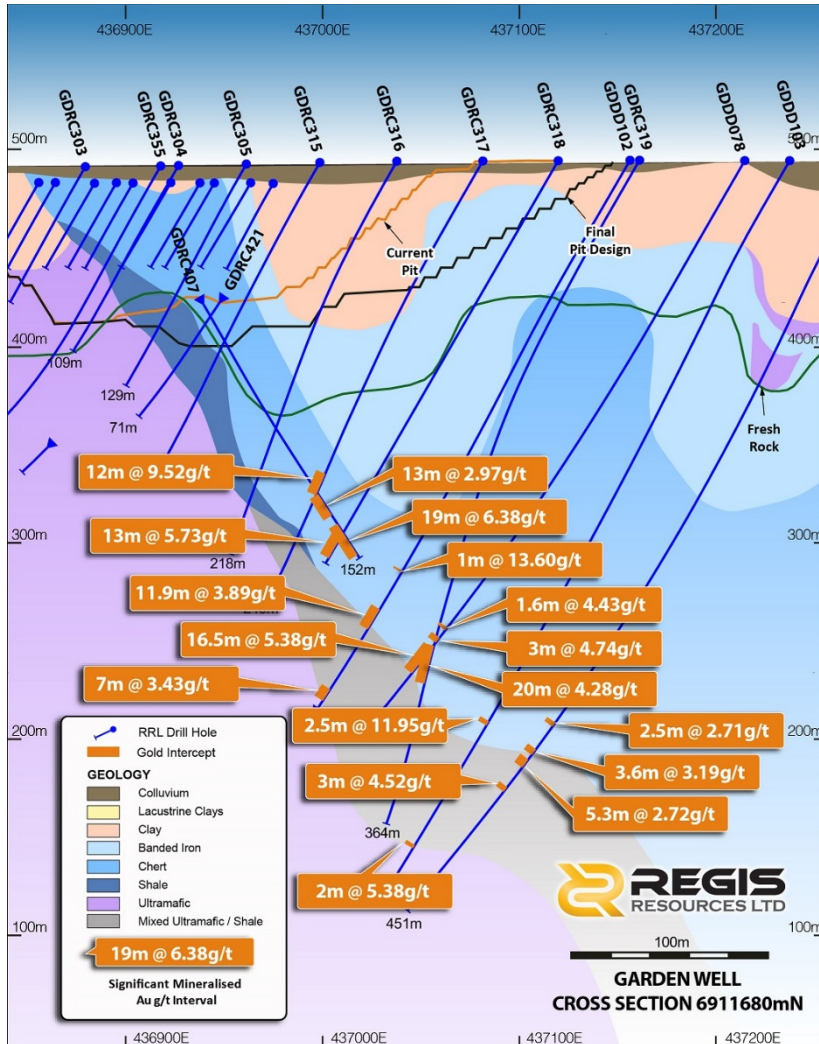


SIGNIFICANT UNDERGROUND TARGET

- Two sections **6911600mN** & **6911680mN**
- Regis earlier drill results below pit in southern area include:
 - 19.6m @ 9.47g/t Au from 318m
 - 19m @ 6.38g/t Au from 131m
 - 12m @ 9.52g/t Au from 179m
 - 5m @ 22.48g/t Au from 192m
 - 20m @ 4.28g/t Au from 270m
- Current drill spacing in this area is 40 x 40m, not suitable for U/G resource
- RC drilling to commence in Q3:
 - Phased programme totalling around 16,000m, extending at least to Q4
 - Infill the high grade zone
 - Test mineralisation continuity
 - Test for mineralisation extensions to south



GARDEN WELL UNDERGROUND PROJECT



SIGNIFICANT UNDERGROUND TARGET

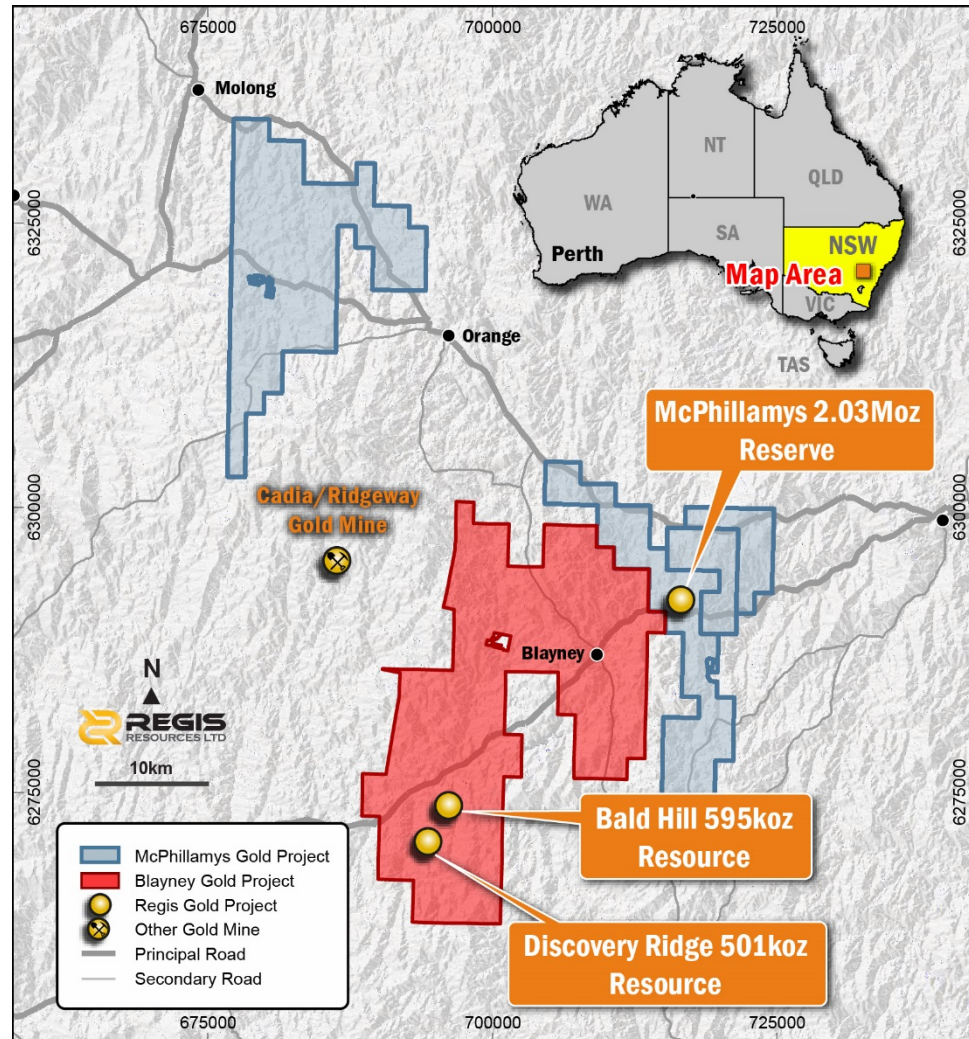
- Two sections 6911600mN & **6911680mN**
- Regis earlier drill results below pit in southern area include:
 - 19.6m @ 9.47g/t Au from 318m
 - 19m @ 6.38g/t Au from 131m
 - 12m @ 9.52g/t Au from 179m
 - 5m @ 22.48g/t Au from 192m
 - 20m @ 4.28g/t Au from 270m
- Current drill spacing in this area is 40 x 40m, not suitable for U/G resource
- RC drilling to commence in Q3:
 - Phased programme totalling around 16,000m, extending at least to Q4
 - Infill the high grade zone
 - Test mineralisation continuity
 - Test for mineralisation extensions to south



McPHILLAMYS (NSW)

ORGANIC GROWTH PROJECT

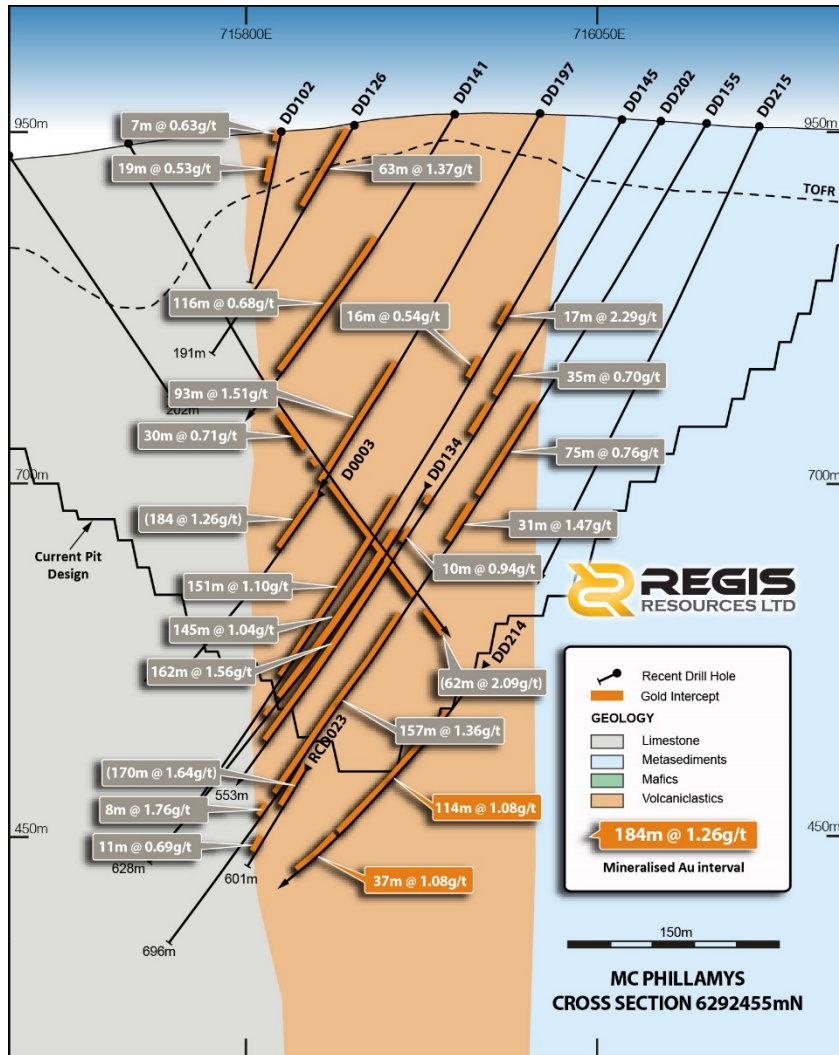
- **Located in Central-West NSW**
 - Well established gold mining district
 - Cadia, Cowal, Northparkes +45Moz*
- **Gold resource 2.31Moz**
- **Gold reserve 2.03 Moz**
- **One of Australia's larger undeveloped open pit opportunities**
- **PFS completed showing high quality and large scale project**
- **Targeting first production DecQ 2019**
- **Discovery Ridge project presents opportunity for higher grade, lower strip satellite for McPhillamys**
- **All 100% Regis owned**
- **Excellent organic growth for Regis**



* Recent quoted resources from public information



McPHILLAMYS



INFILL AND EXTENSIONAL DRILLING

8 diamond holes (3,953m) were drilling during the quarter:

- Infill of deeper parts of reserve model
- Add drilling data beyond current pit design

Significant results included:

- 134m @ 1.24g/t Au from 399m
- 143m @ 1.14g/t Au from 490m
- 114m @ 1.08g/t Au from 491m
- 57m @ 1.61g/t Au from 109m

Results inside the reserve model appear confirmatory of surrounding intersections

Deeper results confirm mineralisation extending beyond current pit and will be included in next resource update



EIS AND DFS UPDATE

EIS – work continuing with most areas nearing completion

Draft PEA submitted to regulators for review during quarter:

- Allowed meetings with key regulators involved in assessment of project
- Formal submission targeted for Q3 – triggers DPE to provide Regis with SEARs
- SEARs allow EIS to be appropriately focussed to enable regulatory assessment

Main matter outstanding in PEA is resolution of final location of tailings storage facility (TSF)

- Issues to be resolved associated with interaction of regulations involving surface water harvesting, water access licencing and dam classification:
 - Regis investigating & liaising with regulators to determine regulatory pathway for TSF
 - Expect permitting position to be resolved in Q3

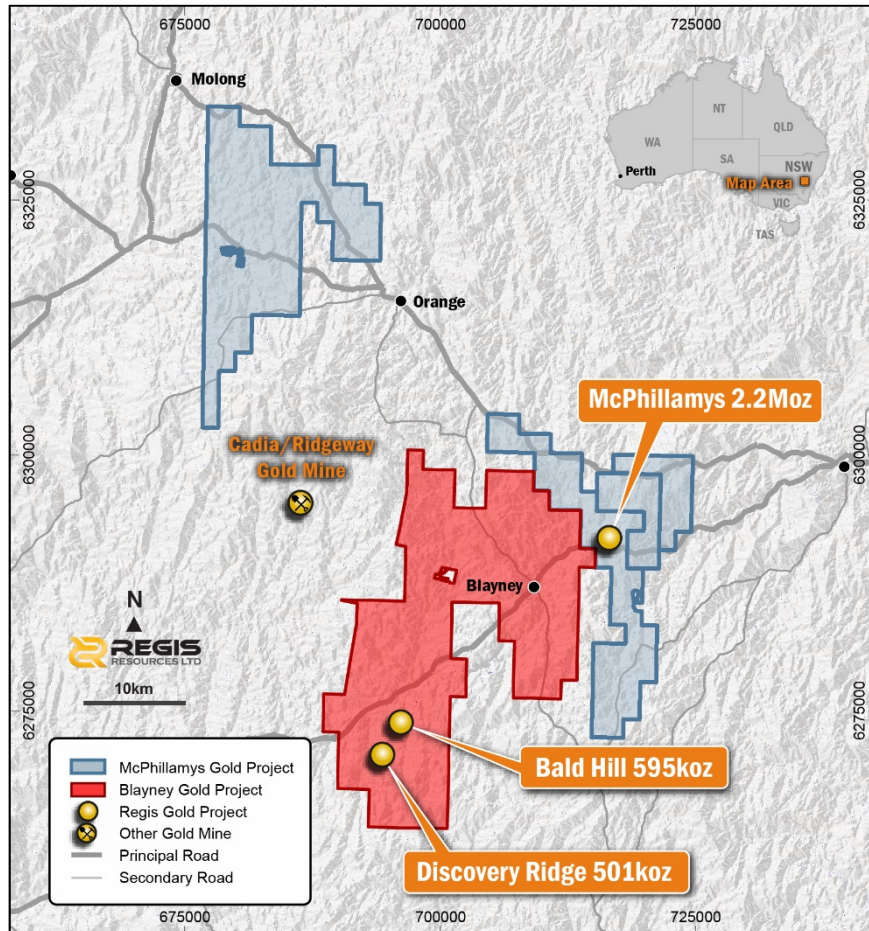
Completion of DFS delayed as final site layout required in order to provide basis for detailed design and construction of project.

- Other work on DFS well advanced and finalisation expected to progress expeditiously once site layout resolved

Development timetable to be updated on completion of DFS



DISCOVERY RIDGE EXPECTED TO DELIVER SIGNIFICANT VALUE TO MGP



- 100% owned Discovery Ridge deposit located 32km away from McPhillamys by major highway
- MRE of 13.84Mt @ 1.1g/t for 501koz*
- Completed 1,930m of a 6,000m RC infill drilling programme in Q2 for maiden Reserve in Q3
 - Significant results include:
 - 66m @ 1.89g/t Au from 74m
 - 34m @ 1.87g/t Au from 36m
 - 32m @ 1.96g/t Au from 58m
 - 48m @ 1.25g/t Au from 1m
- Results to date appear in line with historic results for both location and grade.
- Discovery Ridge will be studied as a satellite operation to be developed with McPhillamys
- Targeting a substantial satellite project with minimal capex, higher grade and lower strip ratio than early years of McPhillamys
- **Expected to deliver significant value**

*Refer to Regis announcement released on 23 February 2017



- Q2 gold production an all time Regis record of 92,113 ounces at AISC of A\$855/oz
- Production in line with Q1 (91,921oz) and run rate at top of FY18 guidance
- Q2 AISC below bottom of guidance range
- Record H1 production of 184,034 ounces at AISC \$858/oz sees Regis on target to achieve middle to top of annual production guidance range
- Record cash-flow from operations \$83.8m for Q2 (Q1: \$62.9m)
 - Cash and bullion holdings were an end of quarter record of \$172.0m (Q1: \$131.3m)
 - \$44m cash build allowing \$3.6m land and water access license purchases for MGP
- Exploration efforts continue to deliver:
 - Rosemont underground drilling - high grade results – resource & scoping study pending
 - Significant results at Baneygo and Reichelts Find
 - Drilling at Garden Well to commence in Q3 on significant high grade underground targets
 - Confirmatory drilling results at McPhillamys and Discovery Ridge
- McPhillamys EIS and DFS work continuing
 - Completion expected to be expedited once final TSF location resolved



APPENDIX 1

JORC COMPLIANT

ORE RESERVE ESTIMATES 31 MARCH 2017

Gold			Proved			Probable			Total Ore Reserve			Competent Person ³
Project	Type	Cut-Off (g/t) ²	Tonnes (Mt)	Gold Grade (g/t)	Gold Metal (koz)	Tonnes (Mt)	Gold Grade (g/t)	Gold Metal (koz)	Tonnes (Mt)	Gold Grade (g/t)	Gold Metal (koz)	
Moolart Well ¹	Open-Pit	> 0.4	1.8	0.98	57	1.0	0.82	27	2.8	0.92	83	D
Garden Well ¹	Open-Pit	> 0.4	6.1	0.76	149	17.6	0.92	520	23.7	0.88	669	D
Rosemont ¹	Open-Pit	> 0.4	1.9	1.53	92	7.8	1.40	350	9.7	1.42	442	D
Duketon Main Deposits	Sub Total		9.7	0.95	298	26.4	1.06	897	36.1	1.03	1,195	
Tooheys Well ³	Open-Pit	> 0.5	-	-	-	7.1	1.61	366	7.1	1.61	366	D
Gloster ¹	Open-Pit	> 0.5	0.2	0.85	6	7.1	1.06	243	7.3	1.05	248	D
Erlistoun ¹	Open-Pit	> 0.5	-	-	-	4.1	1.43	190	4.1	1.43	190	D
Baneygo	Open-Pit	> 0.4	-	-	-	3.6	1.16	136	3.6	1.16	136	D
Petra	Open-Pit	> 0.5	-	-	-	0.6	1.26	25	0.6	1.26	25	D
Dogbolter	Open-Pit	> 0.5	-	-	-	0.3	1.57	16	0.3	1.57	16	D
Anchor	Open-Pit	> 0.5	-	-	-	0.1	2.07	6	0.1	2.07	6	D
Duketon Satellite Deposits	Sub Total		0.2	0.85	6	23.0	1.33	981	23.2	1.32	987	
McPhillamys⁴	Open-Pit	> 0.4	-	-	-	60.1	1.05	2,034	60.1	1.05	2,034	D
Regis	Grand Total		10.0	0.95	304	109.5	1.11	3,912	119.4	1.10	4,216	

Notes

The above data has been rounded to the nearest 100,000 tonnes, 0.01 g/t gold grade and 1,000 ounces. Errors of summation

1. Mineral Resources and Ore Reserves are reported inclusive of ROM Stockpiles at cut-off grade of 0.4 g/t.
2. Cutoff grades vary according to oxidation and lithology domains. Refer to Group Ore Reserves Lower Cut Notes.
3. As reported 4th July 2017
4. As reported 8th September 2017



APPENDIX 2

JORC COMPLIANT MINERAL RESOURCES 31 MARCH 2017

Gold			Measured			Indicated			Inferred			Total Resource			Competent Person ²
Project	Type	Cut-Off (g/t)	Tonnes (Mt)	Gold Grade (g/t)	Gold Metal (koz)	Tonnes (Mt)	Gold Grade (g/t)	Gold Metal (koz)	Tonnes (Mt)	Gold Grade (g/t)	Gold Metal (koz)	Tonnes (Mt)	Gold Grade (g/t)	Gold Metal (koz)	
Moolart Well ¹	Open-Pit	0.4	5.2	0.87	144	17.1	0.70	384	12.2	0.71	278	34.5	0.73	806	A
Garden Well ¹	Open-Pit	0.4	6.8	0.76	164	52.5	0.83	1,401	10.8	0.78	271	70.1	0.82	1,837	A
Rosemont ¹	Open-Pit	0.4	2.4	1.45	111	20.5	1.30	858	1.8	1.72	97	24.7	1.34	1,066	A
Duketon Main Deposits	Sub Total		14.3	0.91	420	90.2	0.91	2,643	24.7	0.81	646	129.2	0.89	3,709	
Tooheys Well ³	Open-Pit	0.0	-	-	-	15.9	1.17	598	1.1	0.89	31	17.0	1.16	630	A
Gloster ¹	Open-Pit	0.4	0.2	0.85	6	15.0	0.83	399	6.1	0.66	129	21.3	0.78	534	A
Baneygo	Open-Pit	0.4	-	-	-	9.2	0.96	283	1.9	0.95	57	11.1	0.96	340	A
Erlistoun ¹	Open-Pit	0.4	0.0	0.95	0	6.0	1.31	253	0.8	1.05	28	6.9	1.28	282	A
Dogbolter	Open-Pit	0.4	-	-	-	3.5	1.11	128	0.5	1.02	16	4.0	1.10	144	A
Russells Find	Open-Pit	0.4	-	-	-	2.1	1.07	71	0.3	0.90	10	2.4	1.05	81	A
Petra	Open-Pit	0.4	-	-	-	1.2	1.08	42	0.1	1.09	2	1.3	1.08	44	A
King John	Open-Pit	0.4	-	-	-	-	-	-	0.8	1.56	42	0.8	1.56	42	A
Reichelts Find	Open-Pit	0.4	-	-	-	-	-	-	0.8	1.11	28	0.8	1.11	28	A
Anchor	Open-Pit	0.4	-	-	-	0.2	1.75	9	0.1	0.95	2	0.2	1.53	11	A
Duketon Satellite Deposits	Sub Total		0.2	0.85	6	53.0	1.05	1,784	12.5	0.86	346	65.7	1.01	2,136	
Duketon	Total		14.5	0.91	426	143.1	0.96	4,427	37.2	0.83	991	194.9	0.93	5,845	
McPhillamys⁴	Total	0.4	-	-	-	67.7	1.05	2,282	1.2	0.64	25.46	68.9	1.04	2,307	A
Regis	Grand Total		14.5	0.91	426	210.9	0.99	6,709	38.4	0.82	1,017	263.8	0.96	8,152	

Notes

The above data has been rounded to the nearest 100,000 tonnes, 0.01 g/t gold grade and 1,000 ounces. Errors of summation may occur due to rounding.

All Mineral Resources are reported inclusive of Ore Reserves to JORC Code 2012 unless otherwise noted.

1. Mineral Resources and Ore Reserves are reported inclusive of ROM Stockpiles at cut-off grade of 0.4 g/t.

2. Refer to Group Competent Person Notes.

3. As reported 4th July 2017

4. As reported 8th September 2017

