

A close-up photograph of a hand holding a large pile of shimmering, iridescent mineral sands. The sands are a mix of blue, green, and gold hues, reflecting light in a way that gives them a sparkling appearance. The hand is positioned in the center of the frame, with the fingers slightly curled around the base of the pile. The background is dark and out of focus.

# Broadening Base

Creating a unique mineral sands company

TZMI Congress  
14 November 2018



**BASE  
RESOURCES**



## Disclaimer and Important Notices

This document has been prepared by Base Resources Limited ("Base Resources"). Information in this document should be read in conjunction with other announcements made by Base Resources to ASX.

No representation or warranty, express or implied, is made as to the fairness, accuracy or completeness of the information contained in this document (or any associated presentation, information or matters). To the maximum extent permitted by law, Base Resources and its related bodies corporate and affiliates, and their respective directors, officers, employees, agents and advisers, disclaim any liability (including, without limitation, any liability arising from fault, negligence or negligent misstatement) for any direct or indirect loss or damage arising from any use or reliance on this document or its contents, including any error or omission from, or otherwise in connection with, it.

Certain statements in or in connection with this document contain or comprise forward looking statements. Such statements may include, but are not limited to, statements with regard to capital cost, capacity, future production and grades, sales projections and financial performance and may be (but are not necessarily) identified by the use of phrases such as "will", "expect", "anticipate", "believe" and "envisage". By their nature, forward looking statements involve risk and uncertainty because they relate to events and depend on circumstances that will occur in the future and may be outside Base Resources' control. Accordingly, results could differ materially from those set out in the forward-looking statements as a result of, among other factors, changes in economic and market conditions, success of business and operating initiatives, changes in the regulatory environment and other government actions, fluctuations in product prices and exchange rates and business and operational risk management. Subject to any continuing obligations under applicable law or relevant stock exchange listing rules, Base Resources undertakes no obligation to update publicly or release any revisions to these forward-looking statements to reflect events or circumstances after today's date or to reflect the occurrence of unanticipated events.

Nothing in this document constitutes investment, legal or other advice. You must not act on the basis of any matter contained in this document, but must make your own independent investigation and assessment of Base Resources and obtain any professional advice you require before making any investment decision based on your investment objectives and financial circumstances.

This document does not constitute an offer, invitation, solicitation, advice or recommendation with respect to the issue, purchase or sale of any security in any jurisdiction. In particular, this document does not constitute an offer to sell, or a solicitation of an offer to buy, securities in the United States or to any "US Person" (as defined in the US Securities Act of 1933). This document may not be distributed or released in the United States or to, or for the account of, any US Person.



# Base Resources - a unique mineral sands company

- ▶ “Mid cap” pure mineral sands company:
  - Established profitable Kwale Operations with extensional potential in Kenya
  - A world-class mineral sands development project in the Toliara Project in Madagascar
  - Long combined mine life
  - Track record of excellence in safety, community engagement and environmental management
  - An experienced team and capacity to execute well
- ▶ Creating a company of strategic relevance in a sector likely to continue to evolve





# Kwale Mineral Sands Operation



View video at [www.basetitanium.com](http://www.basetitanium.com)



**No lost time or medical  
treatment injuries**

**14.1 MILLION**

Hours worked with zero Lost-time  
Injuries

**57 months**

Since last Lost-time Injury

**Zero TRIFR**

No medical treatments in last 16 months



**BASE  
RESOURCES**





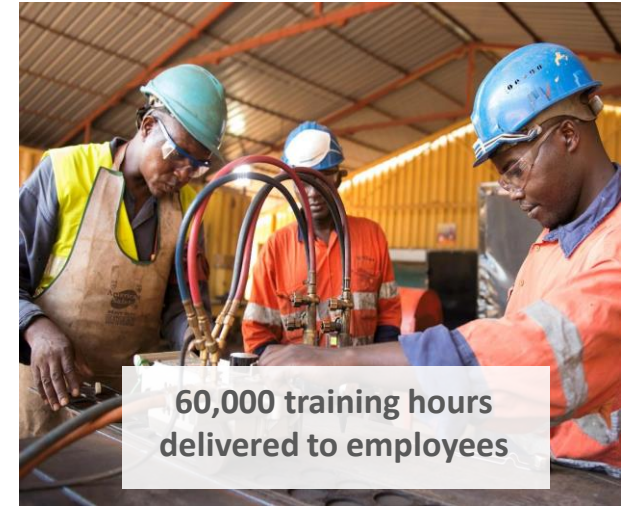
# Further investing in our community



US\$3.8m invested in community and environment programs



Kwale Cotton Project receives World Economic Forum award



60,000 training hours delivered to employees



100 interns, apprentices and graduates employed



20,500 trees planted



240 health workers trained and supported



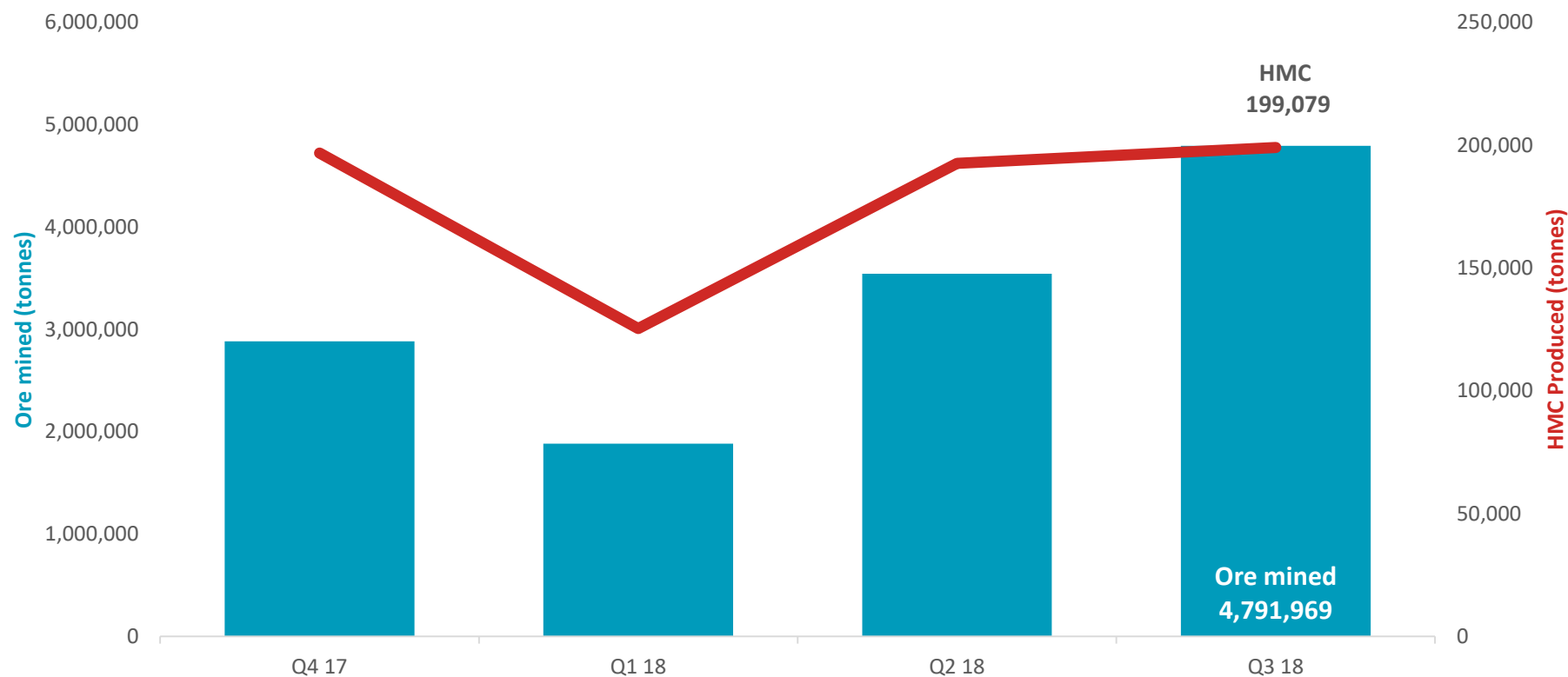
# Kwale Phase 2 optimisation complete



- ▶ Three hydraulic mining units now in operation
- ▶ Mining rate increased 63% to 2,400Tph
- ▶ Wet concentrator plant upgraded with a 69% increase in spiral capacity
- ▶ Delivered on time and budget – capex spend of US\$29.8m

# 35% increase in mined ore

Ore mined and HMC produced



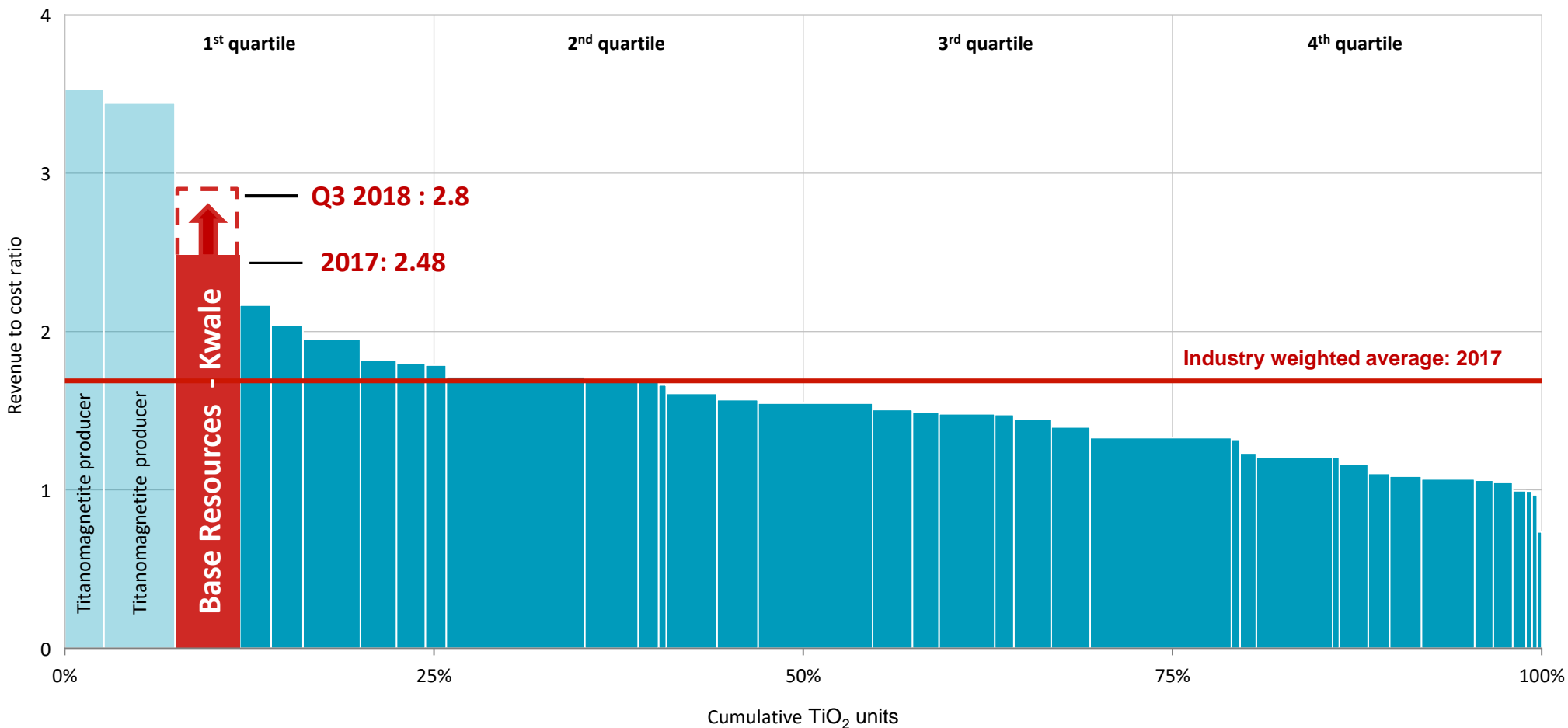
HM%	7.61	6.88	6.36	4.78
-----	------	------	------	------



# Sector leading revenue-to-cost ratio



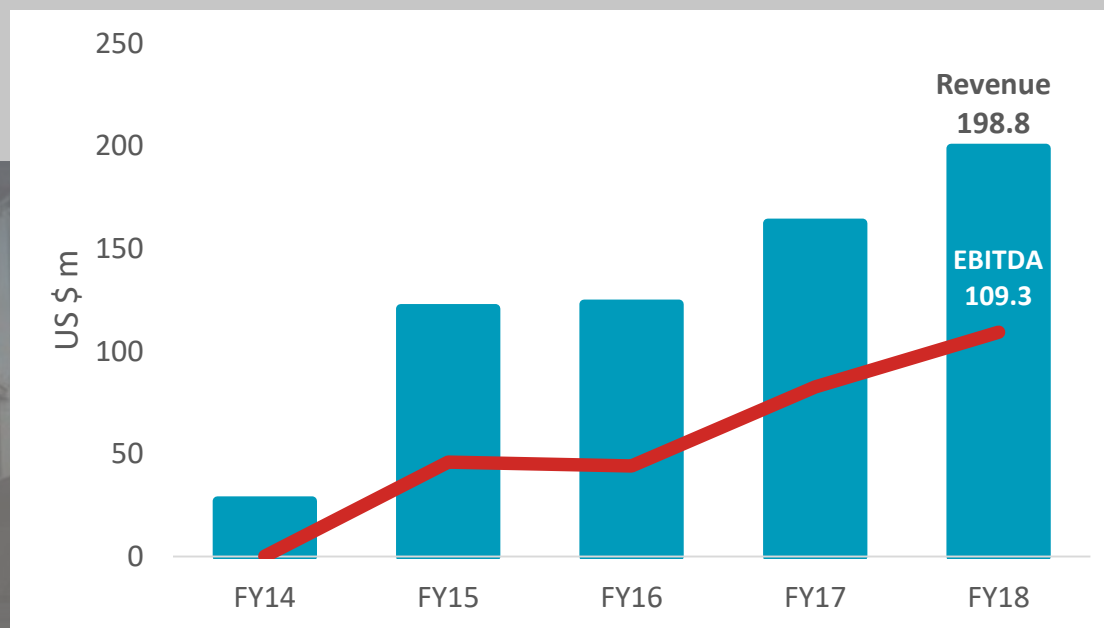
Industry revenue-to-cash cost curve: 2017



Source: Titanium Feedstock Producers Cost Study 2018, TZMI, and Company data



# Strong earnings growth

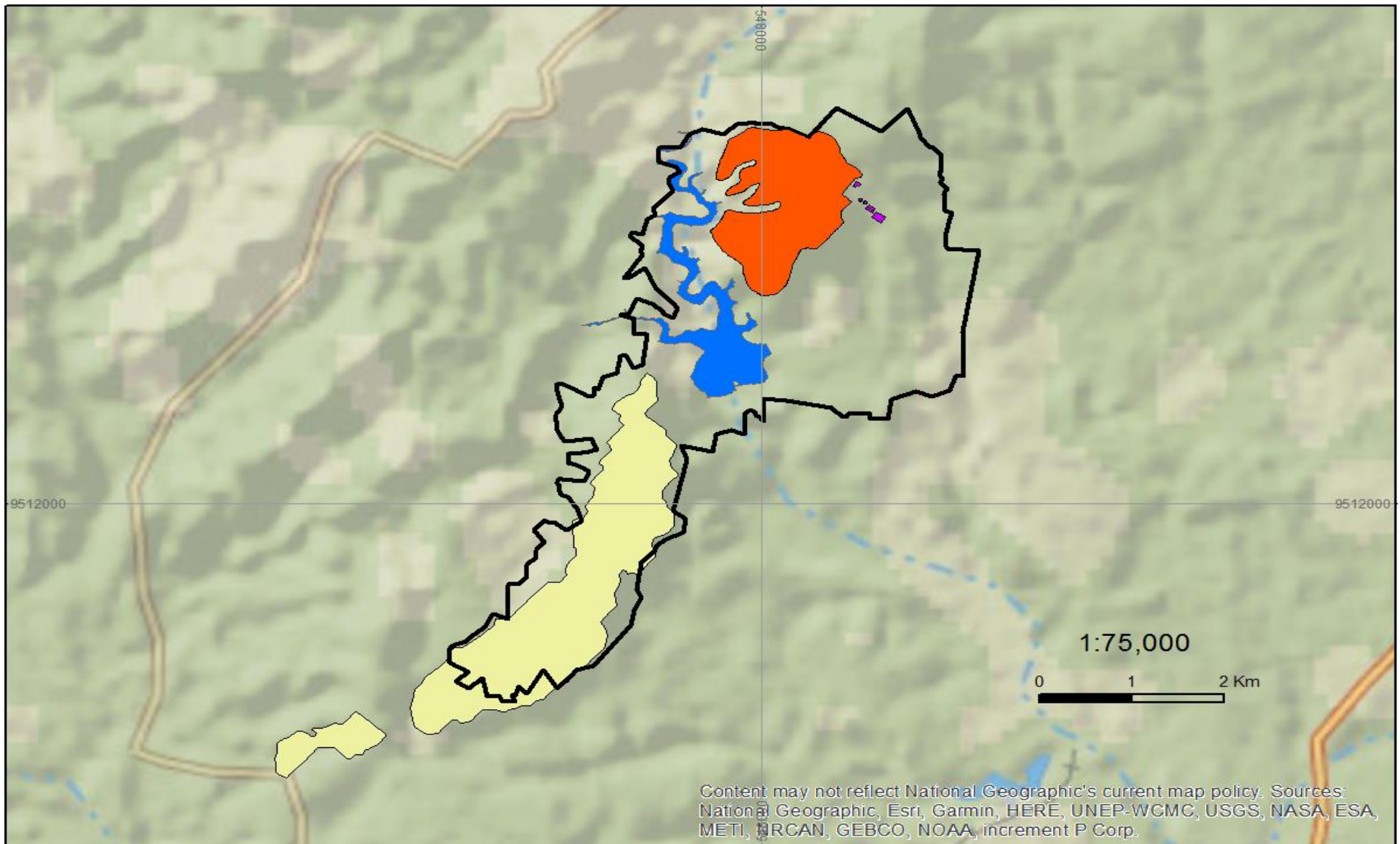




# Kwale mine life extension – South Dune

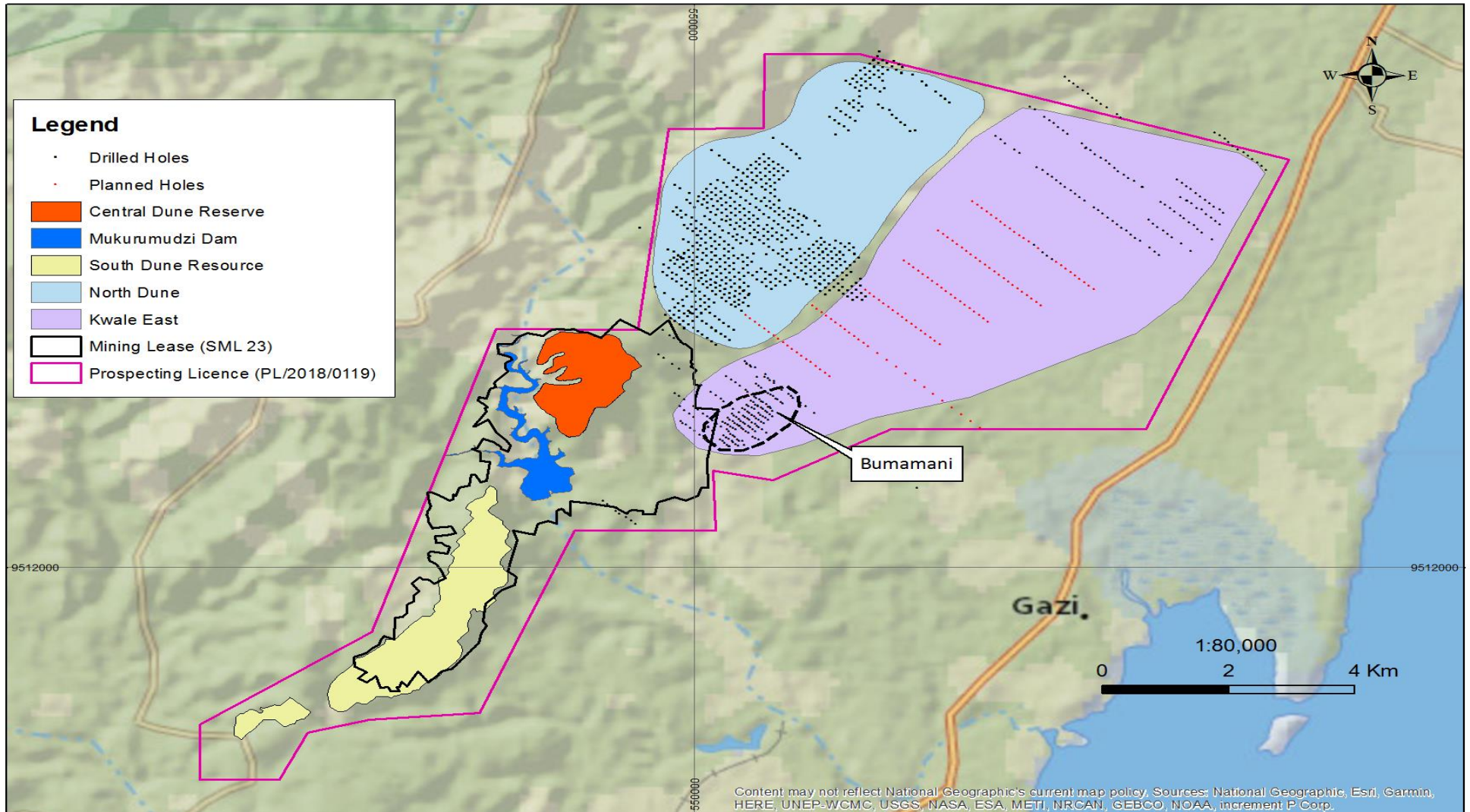


**BASE  
RESOURCES**





# Kwale mine life extension – North and East



# A sound financial platform

## ► Solid equity base (ASX & AIM: BSE )

- A\$303m market capitalisation @ A\$0.26

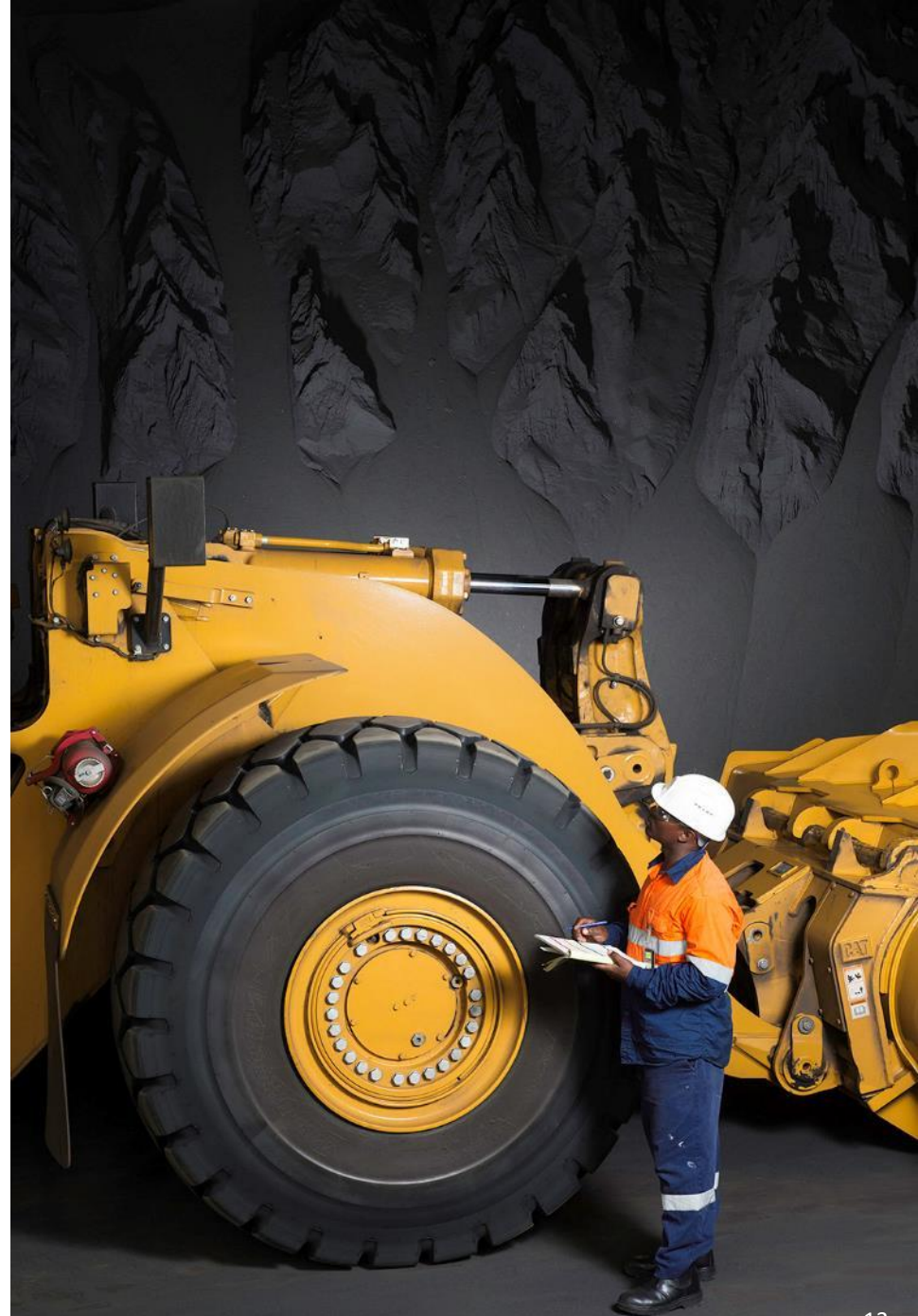
Substantial Shareholders	Interest
Pacific Road Capital	20.8%
Sustainable Capital	16.9%
Regal Funds Management	13.1%
UBS Group	5.3%

## ► Rapidly reducing debt

- US\$23.8m in net debt at 30 September 2018
- US\$62.8m paid down in last 12 months
- Net debt expected to be **less than US\$5m** by the end of 2018

## ► Kwale Project Debt Facility retired

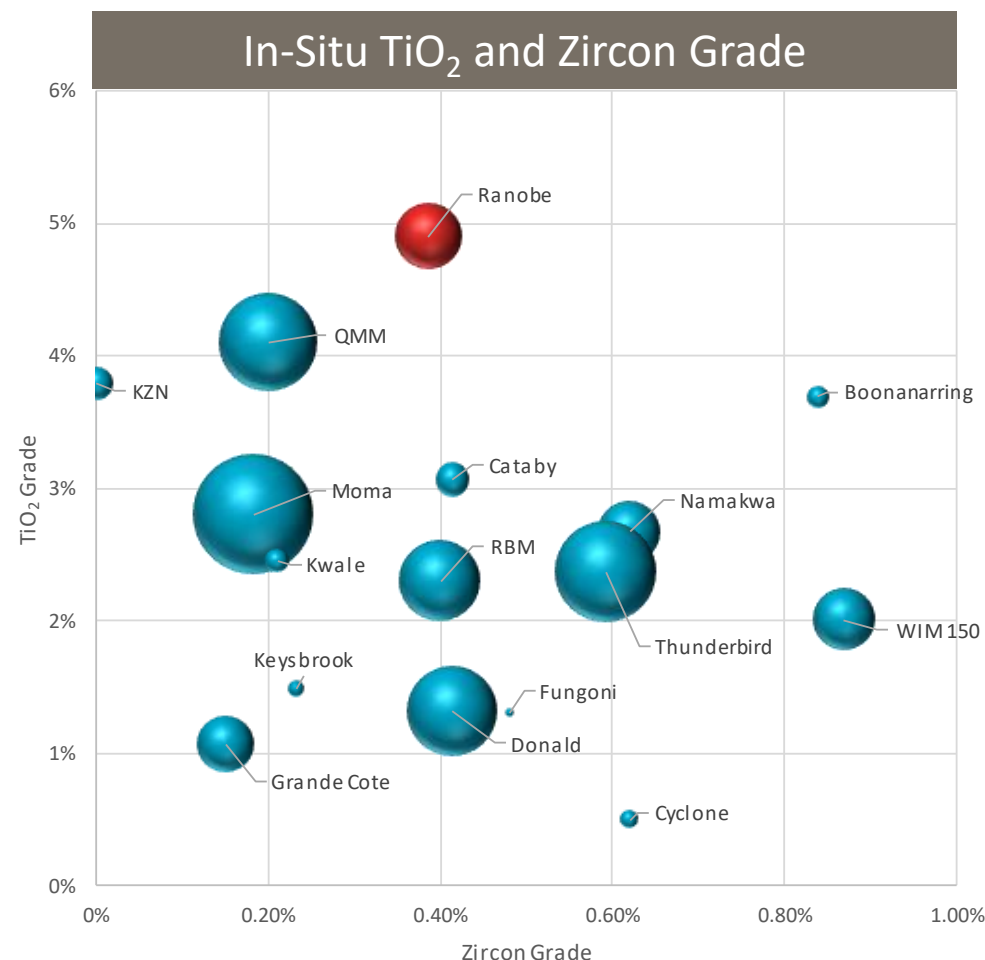
- Kwale Project Debt Facility repaid 20 months ahead of schedule





# Why the Toliara Sands Project?

- ▶ **Large high grade Resource** of 857mt, with 612mt in the Measured and Indicated categories, sufficient to support a 40+ year mine life at a scale similar to Kwale
- ▶ Significant **resource expansion** potential
- ▶ Scope for **operational scale-up** over time
- ▶ **Simple mineralogy** and technically straight forward processing



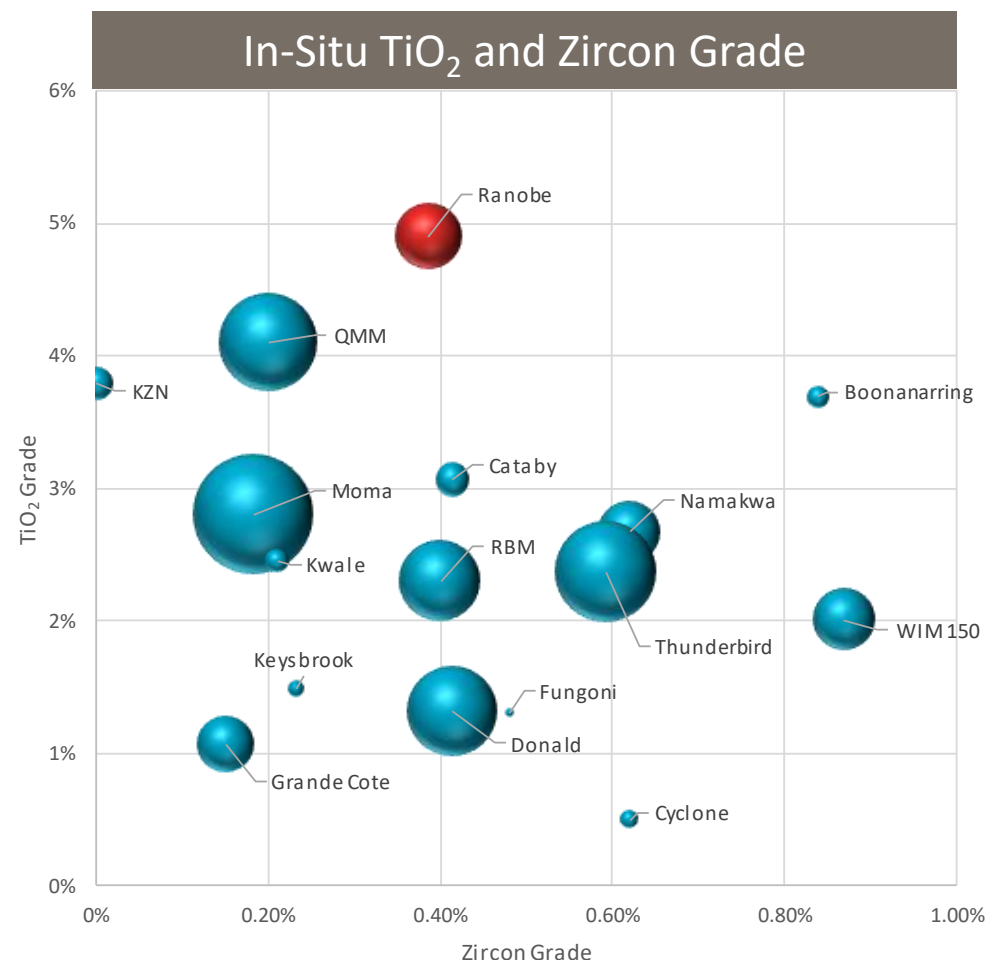
**Note:**

- All projects shown on the basis of last reported Measured & Indicated Mineral Resources estimate up to 19 December 2017 (being the date of agreement to acquire the Toliara Project).
- TiO<sub>2</sub> grade represents the in-ground grade of titanium minerals (ilmenite, leucoxene and rutile). Zircon represents the in-ground grade of zircon
- Size of bubble represents the VHM contained (ilmenite, leucoxene, rutile and zircon). For scale Cataby contains 8Mt of VHM, RBM contains 49Mt of VHM and Moma contains 108Mt of VHM
- Hard rock deposits are excluded from the analysis

Source: RFC Ambrian research

# Why the Toliara Sands Project?

- ▶ Expected **1st quartile Revenue to Cash Cost** ratio
- ▶ Advanced **stage of development**
- ▶ A high level of **government support** as a project of national significance
- ▶ A project **Base can execute well** and should generate significant shareholder returns



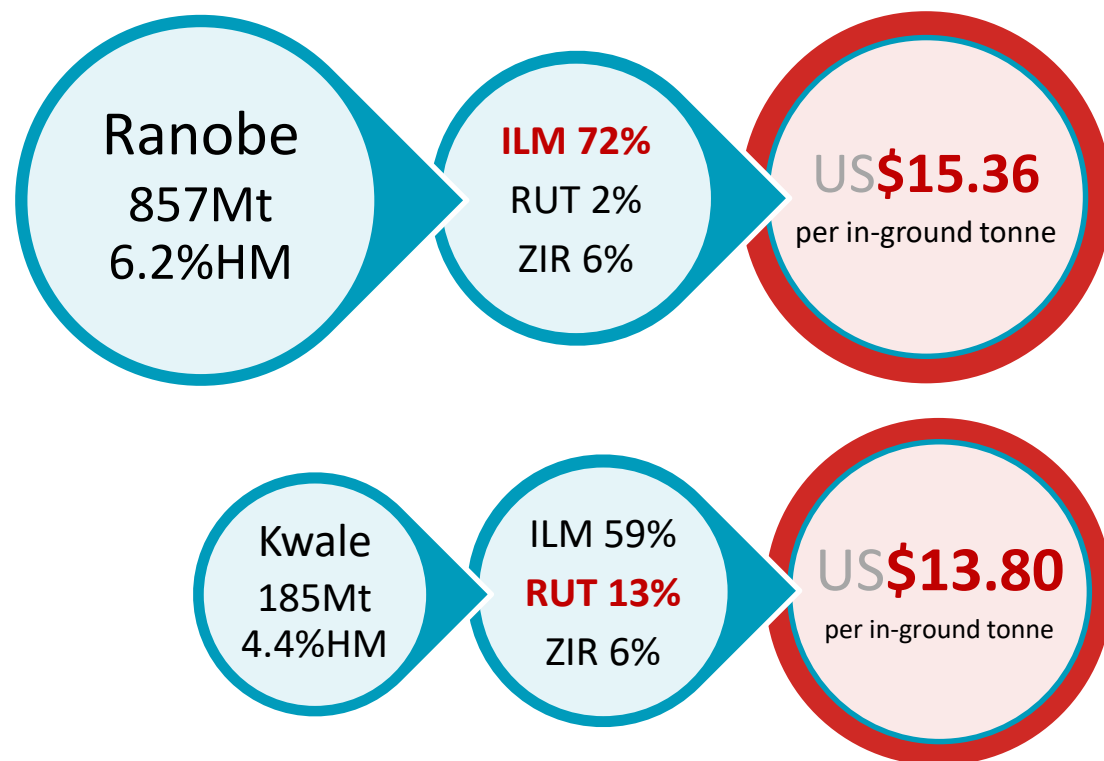
**Note:**

- All projects shown on the basis of last reported Measured & Indicated Mineral Resources estimate up to 19 December 2017 (being the date of agreement to acquire the Toliara Project).
- TiO<sub>2</sub> grade represents the in-ground grade of titanium minerals (ilmenite, leucoxene and rutile). Zircon represents the in-ground grade of zircon
- Size of bubble represents the VHM contained (ilmenite, leucoxene, rutile and zircon). For scale Cataby contains 8Mt of VHM, RBM contains 49Mt of VHM and Moma contains 108Mt of VHM
- Hard rock deposits are excluded from the analysis

Source: RFC Ambrian research



# Grade and assemblage drive a higher in-ground value than Kwale



**Notes:**

- (1) Kwale Central and South Dune Mineral Resource estimate as at commencement of operations taking into account subsequent resource updates. Refer to the Appendix for Kwale Mineral Resource information.
- (2) Calculated on in-ground contained mineral in M&I Resource categories and based on approximate spot prices of: Sulphate Ilmenite US\$150/t, Chloride Ilmenite US\$190/t, Rutile US\$1,050/t and Zircon US\$1,600/t

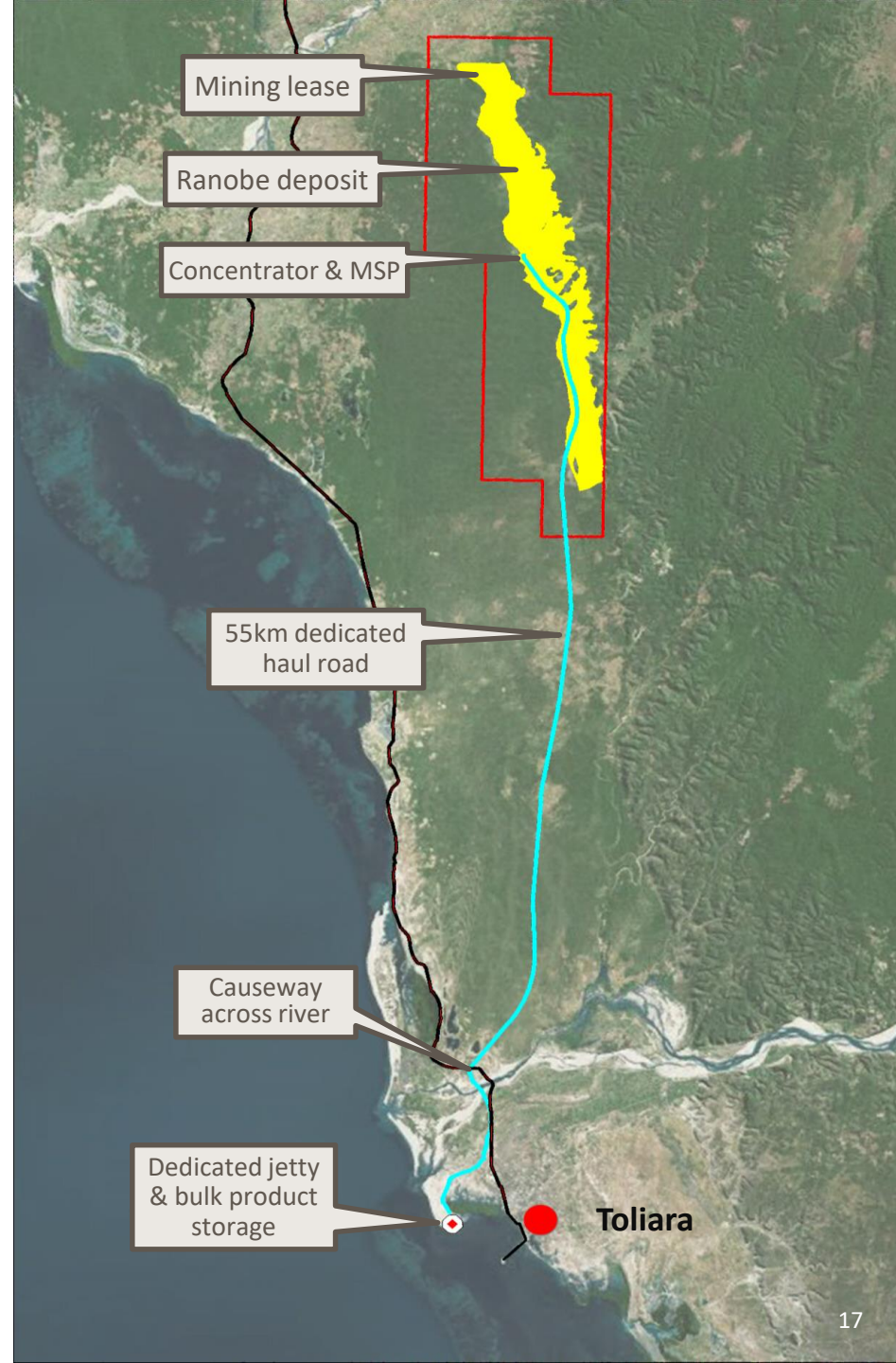
# Toliara PFS on track

## Progressed in Q3

- ▶ A range of mining, processing and infrastructure options were evaluated and the preferred development options selected
- ▶ 100 tonne bulk sample processed by Mineral Technologies - completing the wet concentrator plant test work
- ▶ Completion of the first 3,541 metres of the infill and resource definition drill program
- ▶ Development of environmental and social management plans have commenced
- ▶ Land identification completed for land acquisition and compensation committee established

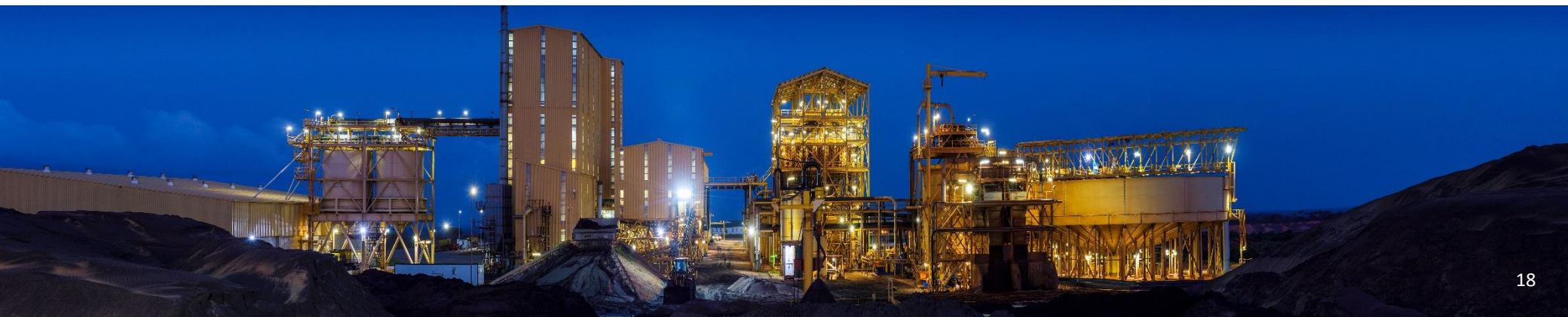
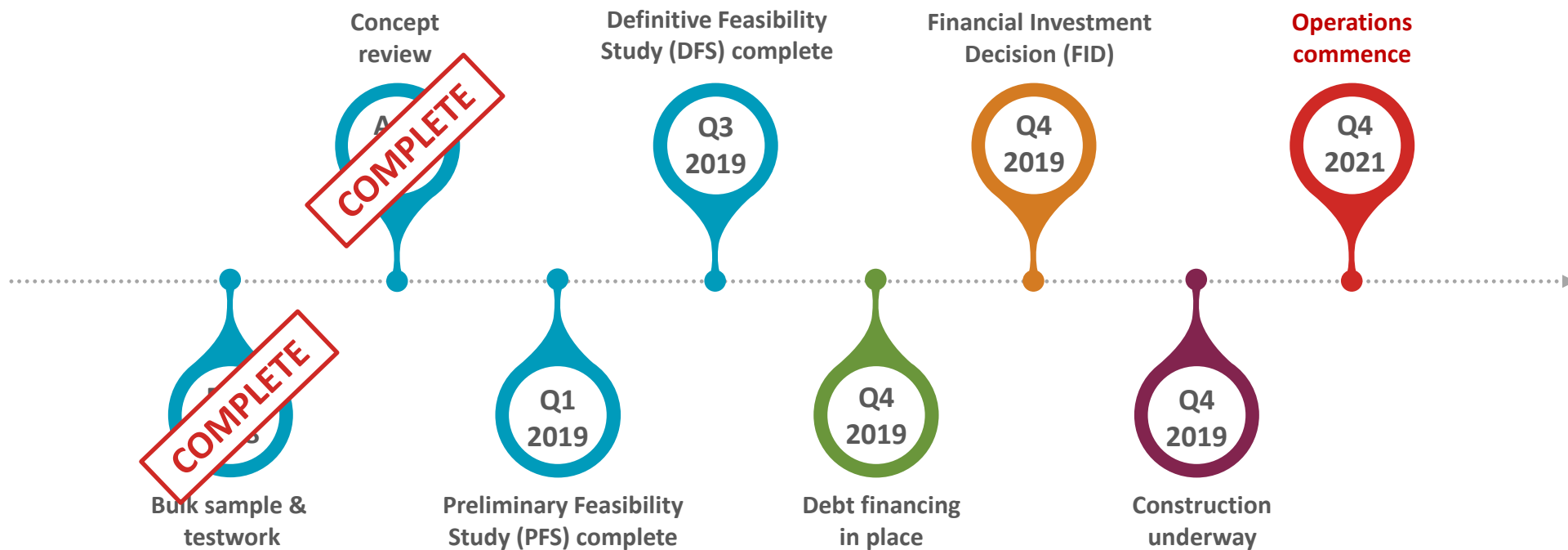
## Q4 focus

- ▶ Mineral separation plant test work for flowsheet design
- ▶ Generating marketing samples from MSP test work
- ▶ Update Ranobe deposit mineralogy
- ▶ Continue drilling program, as land access allows



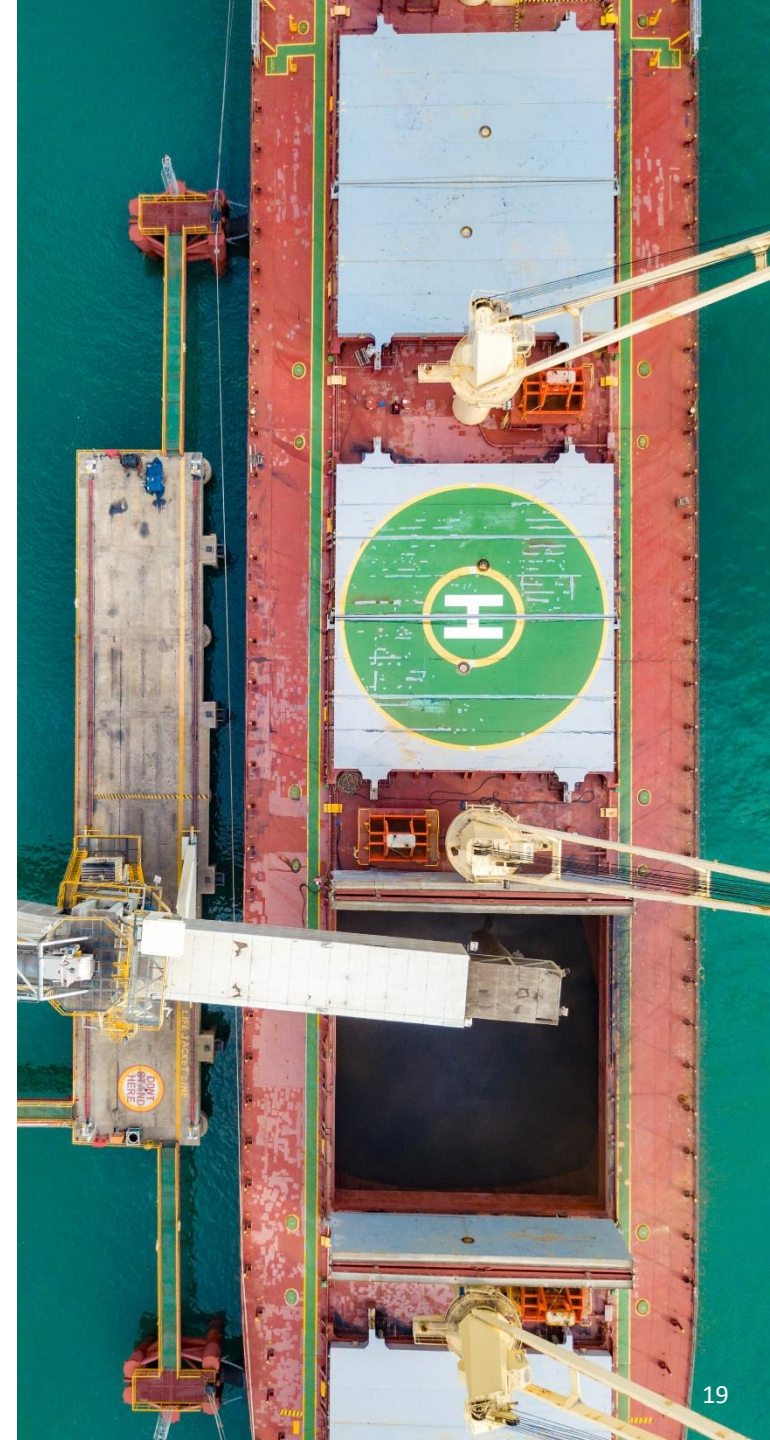


# A path to production in 2021



# Broadening Base

- 1 Team with a track record of delivery
- 2 Consistent, high cashflow Kwale Operations, with extension potential
- 3 A sound financial platform from which to grow the business
- 4 Improving markets are supporting a need for new supply
- 5 An advanced, quality Toliara Sands Project
- 6 Creating a unique mineral sands company







**BASE  
RESOURCES**





# Appendices



# Mineral sands products widely used

## Ilmenite and Rutile

TiO<sub>2</sub> pigment

Titanium  
metal production

90% pigments

10%

Paint

Plastics

Paper

Aerospace



## Zircon

Zircon sand

50%

50%

Ceramics

Chemicals

Refractories and Foundries



# Kwale Ore Reserves and Mineral Resources at 30 June 2018

Category	Material	In Situ HM	HM	SL	OS	HM Assemblage		
						ILM	RUT	ZIR
	(Mt)	(Mt)	(%)	(%)	(%)	(%)	(%)	(%)
<b>Mineral Resources<sup>1</sup></b>								
<b>Measured</b>	94	3.2	3.4	25	1	59	14	6
<b>Indicated</b>	40	1.1	2.7	26	6	53	13	6
<b>Inferred</b>	0.2	0.003	1.3	27	7	54	15	7
<b>Total</b>	134	4.2	3.1	25	2	57	13	6
<b>Ore Reserves</b>								
<b>Proved</b>	52	1.8	3.5	26	1	68	16	7
<b>Probable</b>	28	1.3	4.6	26	4	39	10	4
<b>Total</b>	80	3.1	3.9	26	2	56	13	6

Notes:

- 1) Mineral Resources estimated at a 1% HM cut-off grade.
- 2) Table subject to rounding differences.
- 3) All Ore Reserves are contained within the Mineral Resources.

## JORC Statement

For further detailed information on the Kwale Deposit Mineral Resources and Ore Reserves, refer to Base Resources' ASX market announcements of 8 October 2018 "2018 Mineral Resources and Ore Reserves Statement" and 9 October 2017 "2017 Kwale Mineral Resources and Ore Reserves Statement" each available at <https://www.baseresources.com.au/investor-centre/asx-releases/>. Base Resources confirms that it is not aware of any new information or data that materially affects the information included in these ASX market announcements and all material assumptions and technical parameters underpinning the estimates in these ASX market announcements continue to apply and have not materially changed.



# Ranobe Mineral Resources

Ranobe deposit	Material	HM	HM	SL	OS	HM Assemblage		
Resource Category	Mt	Mt	%	%	%	Ilmenite	Rutile	Zircon
Measured	282	20.3	7.2	4	0	72	2	6
Indicated	330	20.5	6.2	4	0	72	2	6
Inferred	245	12.4	5.0	5	1	71	1	5
<b>Total</b>	<b>857</b>	<b>53.2</b>	<b>6.2</b>	<b>4</b>	<b>0</b>	<b>72</b>	<b>2</b>	<b>6</b>

Notes:

- 1) Mineral Resources estimated at a 3% HM cut-off grade.
- 2) Table subject to rounding differences.

## JORC Statement

For further detailed information on the Ranobe Deposit Mineral Resources, refer to Base Resources' ASX market announcements of 8 October 2018 "2018 Mineral Resources and Ore Reserves Statement" and 19 December 2017 "Investor Presentation - Acquisition and Entitlement Offer" each available at <https://www.baseresources.com.au/investor-centre/asx-releases/>. Base Resources confirms that it is not aware of any new information or data that materially affects the information included in these ASX market announcements and all material assumptions and technical parameters underpinning the estimates in these ASX market announcement continue to apply and have not materially changed.