

14th May 2019

ASX Release

Airborne Survey Commenced on Murchison Project

Enterprise Metals Limited (ASX: ENT) (“Enterprise” or the “Company”) wishes to advise that the planned airborne magnetic and radiometric survey on the eastern one third of the Murchison Project area has commenced.

The 7,200 line km detailed low level magnetic/radiometric survey with specifications of 50 metre line spacing and 30 metre sensor height will complement previously flown surveys of similar specifications on the western and central portions of the project area. When processed and levelled together, these surveys will provide complete detailed low level magnetic/radiometric coverage for the whole project area.

The Murchison Project area is largely covered by soil and transported alluvium, with very little outcrop or subcrop. The detailed magnetic data will provide valuable information about the Archæan rock sequences (including favourable “*greenstone*” gold host rocks such as dolerite, gabbro and basalt) and early ductile and late brittle cross cutting structures which potentially localise gold mineralisation. The radiometric data will assist in interpreting and differentiating residual soil covered areas from transported alluvium covered areas.

The area of the Murchison Project is shown overleaf in Figure 1, and the area of the current low level airborne magnetic/radiometric survey is shown in Figure 2.

Background

Murchison is a large, early-stage gold exploration project covering ~750km² in the Murchison region of central Western Australia, and is prospective for Archaean greenstone gold deposits.

On 1st April 2019, Evolution Mining Limited (ASX: EVN) (“Evolution”) announced that it had entered into an agreement with Enterprise over the Murchison exploration project. Evolution made a \$150,000 payment to Enterprise on signing the agreement, and can earn an 80% interest in the Project by spending A\$6 million on exploration over a four-year period. Evolution will sole fund and operate the project during the earn-in period, and make an additional payment of \$150,000 to Enterprise should the agreement remain in place after two years.



Dr Allan Trench
Chairman

Figure 1. Location of Murchison Project Area

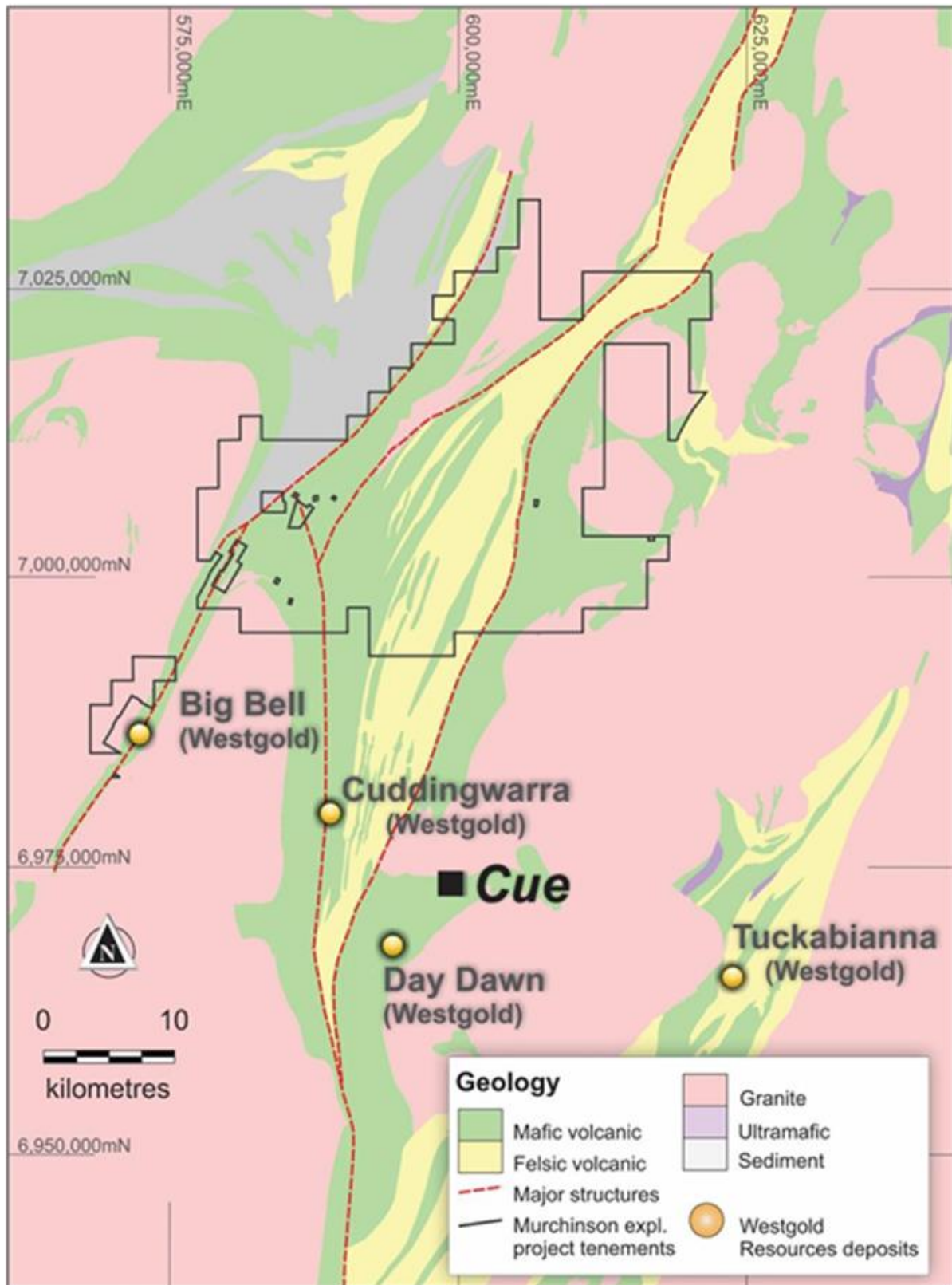


Figure 1. Location of Airborne Survey in Progress over Surface Geology

