

11 September 2019

ASX Release

EMPIRE ACQUIRES ADDITIONAL YUINMERY TENEMENTS

Empire Resources Ltd (“Empire” or the “Company”) is pleased to advise that it has exercised its option to acquire from Evolution Mining Limited (ASX:EVN, “Evolution”), its interest in Yuinmery tenements E57/681 and E57/1027 (the “EVN Tenements”).

Empire has spent considerable time exploring and assessing the EVN Tenements that adjoin Empire’s wholly owned Yuinmery Project. The EVN Tenements provide geological extension to Empire’s Yuinmery tenure (refer Figure 1 below).

A project wide geological review of the geological potential of the Yuinmery Project is ongoing. The Company looks forward to providing updates of this review as information becomes available.

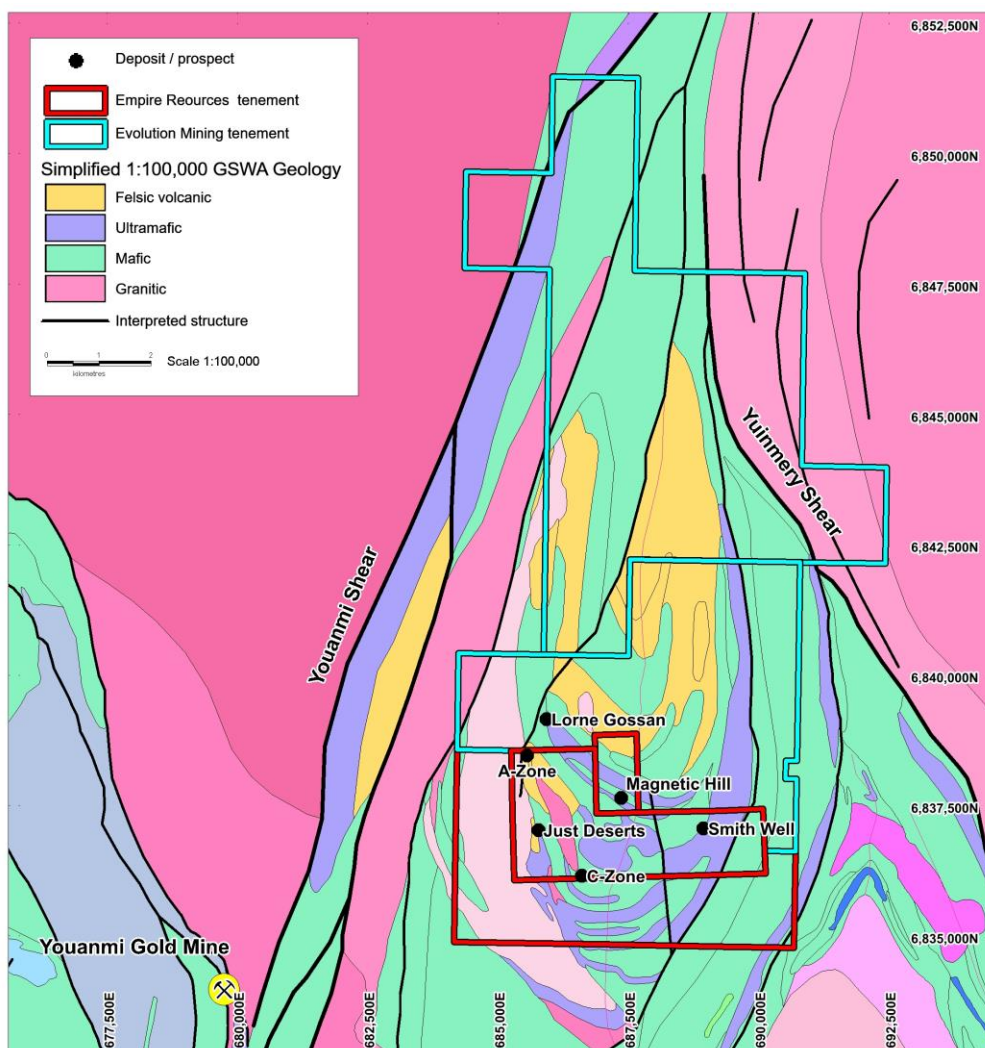


Figure 1 – Yuinmery Project Tenements

PRINCIPAL AND REGISTERED OFFICE

159 Stirling Highway
Nedlands WA 6009

Tel: +61 (0)8 9386 4699
Fax: +61 (0)8 9386 9473

ASX Announcement 11 September 2019

Empire has chosen to exercise its option to acquire the EVN Tenements in return for a 1.25% Net Smelter Royalty (NSR). The NSR is payable on Evolution's earned portion of the tenements, being 91.89% at the time of acquisition. The remaining 8.11% is a contributing interest held by a third party.

Empire Managing Director, Sean Richardson commented:

"The acquisition of Evolution's tenements provides Empire with geological extension to the Company's Yuinmery Project. Empire is aware of the geological potential of the tenements, having explored the area extensively in the past.

The acquisition of the tenements allows Empire to explore extensions of its existing Cu-Au mineralisation, as well as explore recently identified geological targets."

**Sean Richardson
Managing Director**

For further information on the Company

Phone: +61 8 9386 4699

www.resourcesempire.com.au

About Empire

Empire Resources Limited (ASX:ERL) is a gold and copper focussed exploration and development company. Empire owns 100% of two highly prospective projects. The Yuinmery Copper-Gold Project 470km North East of Perth in the base metal rich Youanmi greenstone belt and the Penny's North Gold Project 45km North East of Kalgoorlie in the prolific Eastern Goldfields Region of Western Australia. Empire's projects have numerous exploration targets and offer excellent development potential.

Empire has an experienced team of exploration, development and financial professionals who are committed to developing a sustainable and profitable mineral business. Empire seeks to extract value from direct exploration in its existing projects as well as identifying value accretive investment opportunities that complement the Company's development objectives.