

**ActivEX Limited**

A.C.N. 113 452 896

Suite 2

3B Macquarie Street

SYDNEY NSW 2000

P: (02) 9251 9088

E: [admin@activex.com.au](mailto:admin@activex.com.au)

W: [activex.com.au](http://activex.com.au)



4 May 2020

The Manager  
Company Announcements Office  
Australian Securities Exchange

*Via Online Electronic Lodgement*

Dear Sir/Madam

ActivEX forms Strategic Alliance to acquire Cloncurry Gold Ore Processing facilities

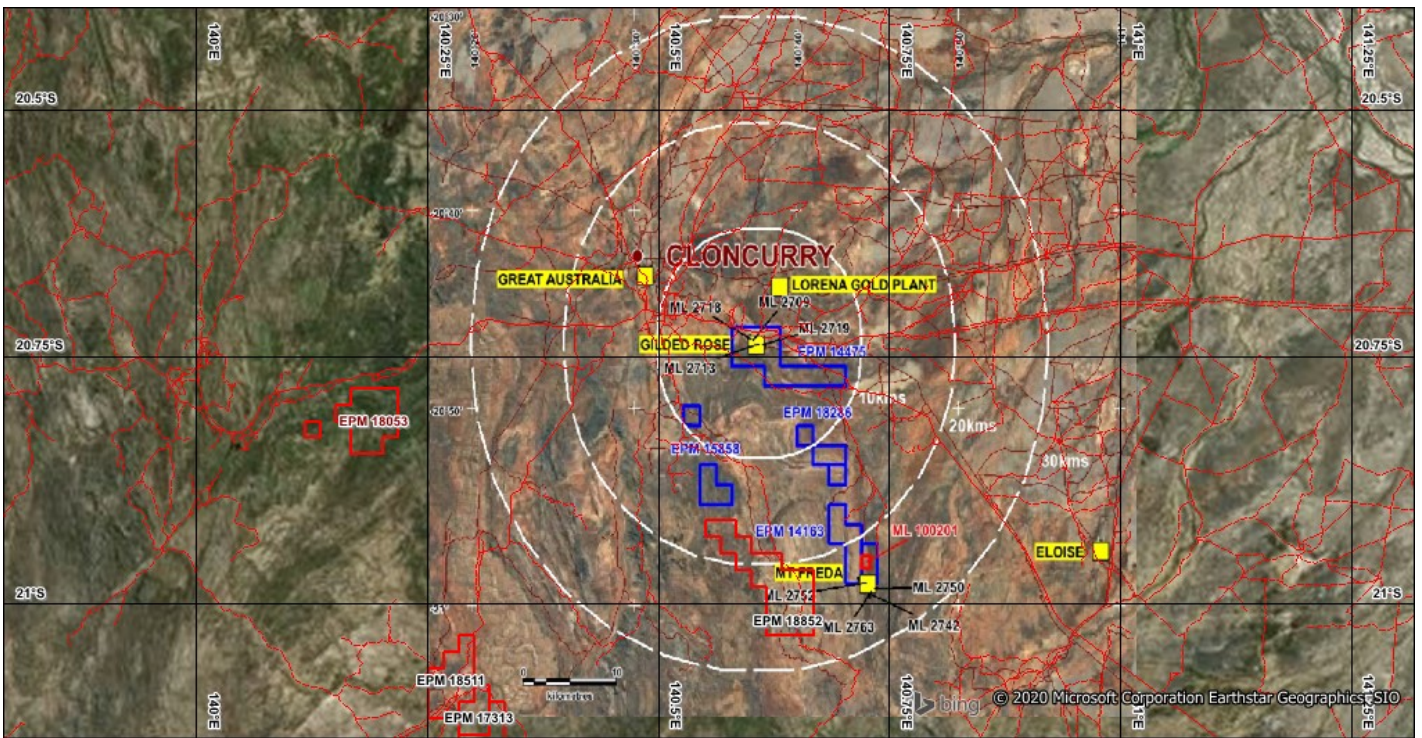
- ActivEX has executed a Non-Binding HoA "Strategic Alliance" with Ausmex Mining Group Limited (ASX:AMG) to identify and acquire Gold Ore Processing Facilities in Cloncurry, QLD
- ActivEX is a committed gold-copper explorer in the Cloncurry Region and views the Strategic Alliance as a natural progression towards becoming a producer.
- Ausmex is focused on bringing its lead asset, the Mt Freda Gold Complex in Queensland, into production in 2020.

The Strategic Alliance with Ausmex provides the opportunity for both Companies to share their in-house expertise and potentially acquire Gold Ore processing facilities to partner in long term gold production.

The Strategic Alliance terms are as follows:

- ActivEX and Ausmex have formed a strategic alliance to identify, review, consider and acquire suitable gold processing facilities within the Cloncurry region.
- Any partnership or other joint venture to be entered into as a result of the strategic alliance will be formed with ActivEX having a 25% interest and Ausmex having a 75% interest.
- On a satisfactory outcome under the strategic alliance, the parties intend to enter into a joint venture (ActivEX: 25%, Ausmex: 75%) for any potential acquisition or transaction of the Plant.
- The parties agree to work together cooperatively for the purposes of this strategic alliance on the terms of this heads of agreement.
- The Current term is four months yet can be mutually extended.

The Strategic Alliance partnership with Ausmex provides the opportunity for both parties the opportunity to potentially acquire Gold Ore processing facilities and partnering in long term gold production.



**Figure 1** Ausmex (blue) and ActivEX (red) Cloncurry Gold and Copper tenement location plan, indicating the close proximity of the Ausmex Projects at Mt Freda ML2752 and the Golden Mile ML100201, as well as the Gilded Rose Gold Mine to two, third party Gold CIP processing facilities at Lorena and the Great Australia Mine, with a combined capacity of ~1 Mtpa.

### **Forward-Looking Statement**

*This document may include forward-looking statements. Forward-looking statements include, but are not limited to, statements concerning planned exploration program and other statements that are not historical facts. When used in this document, the words such as “could”, “plan”, “estimate”, “expect”, “intend”, “may”, “potential”, “should” and similar expressions are forward-looking statements. Although ActivEX believes that its expectations reflected in these forward looking statements are reasonable, such statements involve risks and uncertainties and no assurance can be given that actual results will be consistent with these forward-looking statements.*

Authorised by:  
Board of ActivEX Limited