

DRILL DRIVE CONTRACT AWARDED

11 November 2020

HIGHLIGHTS

- Golden Swan Drill Drive contract awarded to WestAuz
- WestAuz aiming to take first underground cut early December this year
- The Drill Drive will provide a platform for resource definition drilling of Golden Swan
- The highly prospective Southern Terrace will also be tested from the Golden Swan Drill Drive

Poseidon Nickel (ASX: POS, “the Company”) is pleased to advise that the contract for the Golden Swan Drill Drive has been awarded to WestAuz Mining.

Managing Director and CEO, Peter Harold, commented *“the award of the Golden Swan Drill Drive contract is a major milestone at Black Swan and will allow us to drill out the known Golden Swan mineralisation in a rapid and efficient manner once the Drill Drive is completed. As previously reported, recent drilling has identified new EM conductors which potentially extend the known extent of the Golden Swan mineralisation and the newly identified footwall EM plates demonstrate that the Southern Terrace has the potential to host multiple mineralised surfaces. The Golden Swan Drill Drive will provide an excellent location to rapidly drill test for extensions to Golden Swan and other mineralised zones within the Southern Terrace. In addition, the Golden Swan Drill Drive will enable the rapid exploitation of the Golden Swan mineralisation if proven to be economically viable.”*

Golden Swan Drill Drive Contract Awarded to WestAuz Mining

To advance Golden Swan the Company has awarded a contract to WestAuz Mining Pty Ltd (“WestAuz) to develop a circa 400m drill drive from the existing Silver Swan decline to facilitate resource definition and ongoing exploration drilling. WestAuz is an experienced underground mining contractor, based in Kalgoorlie, who has significant experience in underground development and mining.

The drive, to be developed in competent footwall felsic rocks, will be positioned approximately 200m from the known mineralisation and will provide a platform for resource definition drilling of Golden Swan and additional exploration drilling of the highly prospective Southern Terrace (refer Figure1).

WestAuz are planning to mobilise to Black Swan in late November 2020 with the aim of making the first development cut in the new drive early in December 2020.

Next Steps

Once the Golden Swan Drill Drive is completed, anticipated to be late Q1 2021, the Company will immediately commence resource definition drilling on the Golden Swan mineralisation. Tender submissions for the resource drilling have already been requested and are due to close on 20 November.



Peter Harold

Managing Director & CEO

11 November 2020

For further information contact Peter Harold: + 61 (0)8 6167 6600

The announcement was authorised for lodgement by the Board of Poseidon Nickel Limited.

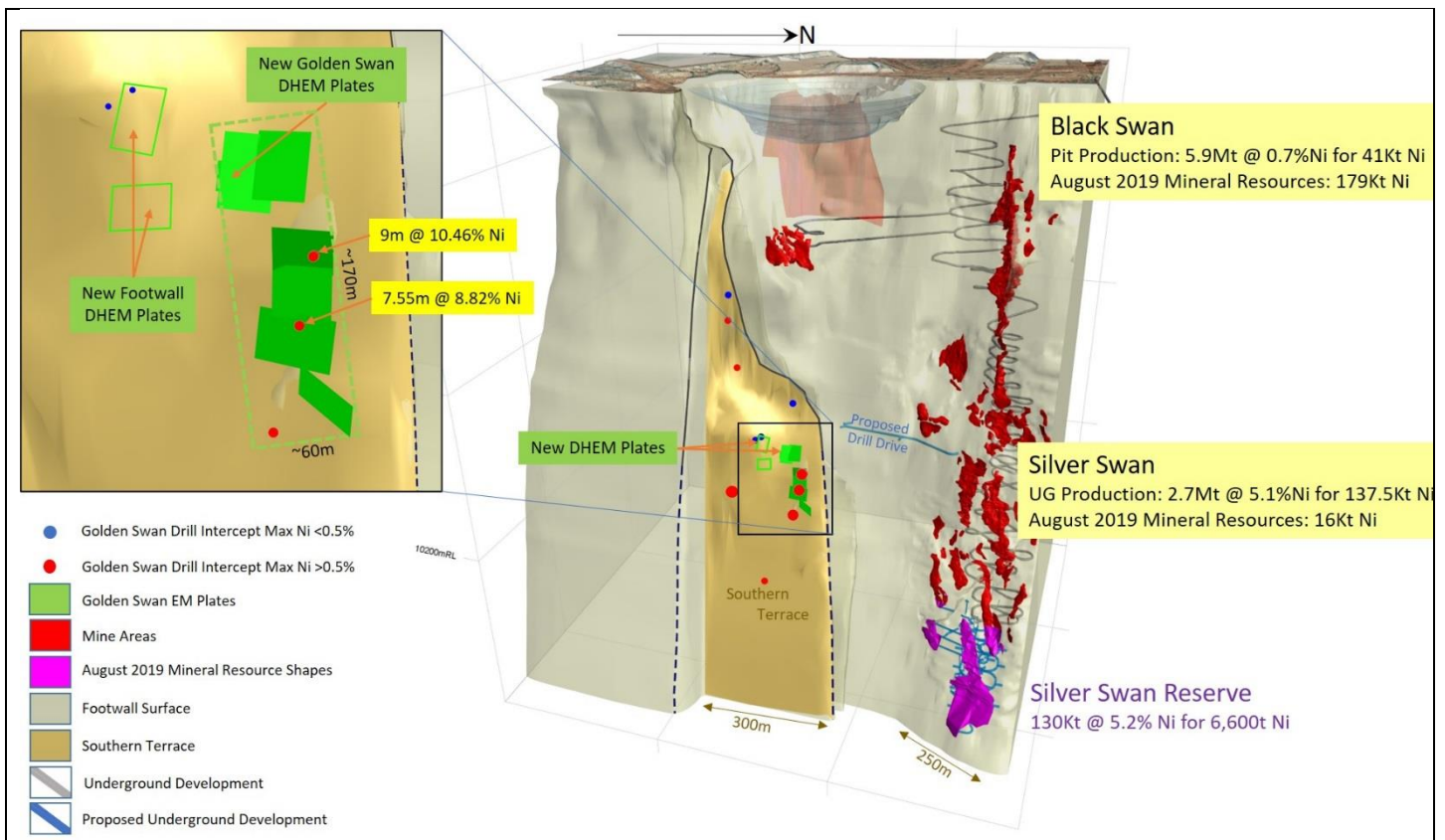


Figure 1: 3D representation of the footwall surface at Black Swan and the emerging potential of the Southern Terrace together with the position of the Golden Swan Drill Drive.

About Poseidon Nickel Limited

Poseidon Nickel Limited (ASX Code: POS) is a nickel sulphide exploration and development company with three projects located within a radius of 300km from Kalgoorlie in the Goldfields region of Western Australia and a resource base of around 400,000 tonnes of nickel and 180,000 ounces of gold.

Poseidon's strategy is focused on the exploration and eventual restart of its established nickel operations in Western Australia where project risk capital and operating costs are low. A critical element of this strategy has been to acquire projects and operations with high levels of geological prospectivity likely to lead to potential substantial extension of the operation's life through the application of modern exploration techniques.

Poseidon owns the Windarra, Black Swan and the Lake Johnston Nickel Projects. In addition to the mines and infrastructure including concentrators at Black Swan and Lake Johnston, these projects have significant exploration opportunities demonstrated by the discovery of the Abi Rose deposit at Lake Johnston and the recent discovery of the Golden Swan mineralisation at Black Swan. The Company is also undertaking a Definitive Feasibility Study on retreating the gold tailings at Windarra given the strength of the A\$ gold price.

MINERAL RESOURCE STATEMENT

Table 1: Nickel Projects Mineral Resources Statement

Nickel Sulphide Resources	JORC Compliance	Cut Off Grade	MINERAL RESOURCE CATEGORY												
			INDICATED			INFERRED			TOTAL						
			Tonnes (Kt)	Ni% Grade	Ni Metal (t)	Tonnes (Kt)	Ni% Grade	Ni Metal (t)	Tonnes (Kt)	Ni% Grade	Ni Metal (t)	Co% Grade	Co Metal (t)	Cu% Grade	Cu Metal (t)
BLACK SWAN PROJECT															
Black Swan	2012	0.40%	9,600	0.68	64,900	21,100	0.54	113,800	30,700	0.58	179,000	0.01	4,200	NA	-
Silver Swan	2012	4.50%	108	9.4	10,130	61	9.7	5,900	168	9.5	16,030	0.19	316	0.4	679
LAKE JOHNSTON PROJECT															
Maggie Hays	2012	0.80%	2,600	1.60	41,900	900	1.17	10,100	3,500	1.49	52,000	0.05	1,800	0.10	3,400
WINDARRA PROJECT															
Mt Windarra	2012	0.90%	922	1.56	14,500	3,436	1.66	57,500	4,358	1.64	72,000	0.03	1,200	0.13	5,700
South Windarra	2004	0.80%	772	0.98	7,500	-	-	-	772	0.98	7,500	NA	-	NA	-
Cerberus	2004	0.75%	2,773	1.25	34,600	1,778	1.91	34,000	4,551	1.51	69,000	NA	-	0.08	3,600
TOTAL															
Total Ni, Co, Cu Resources	2004 & 2012	-	16,775	1.03	173,530	27,275	0.81	221,300	44,049	0.90	395,530	0.02	7,516	0.03	13,379

Note: totals may not sum exactly due to rounding. NA = information Not Available from reported resource model. The Indicated Mineral Resources are inclusive of those Mineral Resources modified to produce the Ore Reserves.

- **Black Swan Resource** as at 22 July 2014 (see ASX announcement "Poseidon Announces Black Swan Mineral Resource" released 4th August 2014)
- **Silver Swan Resource** as at 5 August 2019 (see ASX announcement "Silver Swan Resource Upgrade" released 5th August 2019)
- **Maggie Hays Resource** as at 17 March 2015 (see ASC announcement "50% Increase in Indicated Resources at Lake Johnston" released 17th March 2015)
- **Mt Windarra Resource** as at 7 November 2014 (see ASX announcement "Poseidon Announces Revised Mt Windarra Resource" released 7th November 2014)
- **South Windarra and Cerberus Resource** as at 30 April 2013 (see ASX announcement "Resource Increase of 25% at Windarra Nickel Project" released 1st December 2011)

The Company is not aware of any new information or data that materially affects the information in the relevant market announcements. All material assumptions and technical parameters underpinning the estimates in the relevant market announcements continue to apply and have not materially changed.

ORE RESERVE STATEMENT

Table 2: Nickel Projects Ore Reserve Statement

Nickel Sulphide Reserves	JORC Compliance	ORE RESERVE CATEGORY		
		PROBABLE		
		Tonnes (Kt)	Ni% Grade	Ni Metal (t)
SILVER SWAN PROJECT				
Silver Swan Underground	2012	130	5.2	6,800
Black Swan Open pit	2012	3,370	0.63	21,500
TOTAL				
Total Ni Reserves	2012	3,500	0.81	28,300

Note: Calculations have been rounded to the nearest 10,000 t of ore, 0.01 % Ni grade 100 t Ni metal and 10t of cobalt metal.

Silver Swan Underground Reserve as at 26 May 2017 (see ASX announcement "Silver Swan Definitive Feasibility Study" released 26th May 2017) Black Swan Open Pit Reserve as at 5 November 2014 (see ASX announcement "Poseidon Announces Black Swan Ore Reserve" dated 5th November 2014).

The Company is aware that the 2019 upgrade to the Silver Swan Indicated Resource will materially affect the Silver Swan Reserve above which was based upon the 2015 Silver Swan Resource Estimate (refer to Table 1 above for the new Silver Swan Resource estimate). Such information is based on the information compiled by the Company's Geologists and the Competent Persons as listed below in the Competent Person Statements.

The Company is not aware of any new information or data that materially affects the information in the relevant market announcements for the Black Swan Open Pit Reserve. All material assumptions and technical parameters underpinning the estimates in the relevant market announcements continue to apply and have not materially changed.

COMPETENT PERSON STATEMENTS:

The information in this report that relates to Exploration Results is based on, and fairly represents, information compiled and reviewed by Mr Graham Leaver, who is an employee of Poseidon Nickel, and is a Member of The Australian Institute of Geoscientists.

The information in this report which relates to the Black Swan Mineral Resource is based on, and fairly represents, information compiled by Mr Andrew Weeks who is a full-time employee of Golder Associates Pty Ltd. The information in this report which relates to the Black Swan Ore Reserve is based on, and fairly represents, information compiled by Mr Andrew Weeks who is a full-time employee of Golder Associates Pty Ltd and who is a Member of the Australasian Institute of Mining and Metallurgy.

The information in this report which relates to the Silver Swan Mineral Resource is based on, and fairly represents, information compiled by Mr Steve Warriner, Chief Geologist, who is a full-time employee at Poseidon Nickel, and is a Member of The Australian Institute of Geoscientists and Mr Kahan Cervoj who is a full time employee of Optiro Pty Ltd and is a Fellow of the Australasian Institute of Mining and Metallurgy. The information in this report which relates to the Silver Swan Ore Reserve is based on, and fairly represents, information compiled by Mr Matthew Keenan who is a full-time employee of Entech Pty Ltd and is a Member of the Australasian Institute of Mining and Metallurgy.

The information in this report which relates to the Lake Johnston Mineral Resource is based on, and fairly represents, information compiled by Mr Steve Warriner, Chief Geologist, who is a full-time employee at Poseidon Nickel, and is a Member of The Australian Institute of Geoscientists and Mr Andrew Weeks who is a full-time employee of Golder Associates Pty Ltd and is a Member of the Australasian Institute of Mining and Metallurgy. The information in this report which relates to the Lake Johnston Ore Reserves Project is based on, and fairly represents, information compiled by Mr Matthew Keenan who is a full time employee of Entech Pty Ltd and is a Member of the Australasian Institute of Mining and Metallurgy.

The information in this report that relates to Mineral Resources at the Windarra Nickel Project and Gold Tailings Project is based on, and fairly represents, information compiled by Mr Steve Warriner, Chief Geologist, who is a full-time employee at Poseidon Nickel, and is a Member of The Australian Institute of Geoscientists and Mr Ian Glacken who is a full time employee of Optiro Pty Ltd and is a Fellow of the Australasian Institute of Mining and Metallurgy. The Windarra Project contains Mineral Resources which are reported under JORC 2004 Guidelines as there has been no Material Change or Re-estimation of the Mineral Resource since the introduction of the JORC 2012 Codes. Future estimations will be completed to JORC 2012 Guidelines.

Mr Leaver, Mr Warriner, Mr Cervoj, Mr Weeks, Mr Glacken and Mr Keenan all have sufficient experience which is relevant to the style of mineralisation and type of deposits under consideration and to the activity which they are undertaking to qualify as a Competent Person as defined in the 2012 Edition of the 'Australasian Code for Reporting of Exploration Results, Mineral Resources and Ore Reserves' (the JORC Code 2012). Mr Leaver, Mr Warriner, Mr Cervoj, Mr Weeks, Mr Glacken and Mr Keenan have consented to the inclusion in the report of the matters based on his information in the form and context in which it appears.

The Australian Securities Exchange has not reviewed and does not accept responsibility for the accuracy or adequacy of this release.

FORWARD LOOKING STATEMENT – INFERRED RESOURCE STATEMENTS:

The Company notes that an Inferred Resource has a lower level of confidence than an Indicated Resource and that the JORC Codes, 2012 advises that to be an Inferred Resource it is reasonable to expect that the majority of the Inferred Resource would be upgraded to an Indicated Resource with continued exploration. Based on advice from relevant competent Persons, the Company has a high degree of confidence that the Inferred Resource for the Silver Swan deposit will upgrade to an Indicated Resource with further exploration work.

The Company believes it has a reasonable basis for making the forward looking statement in this announcement, including with respect to any production targets, based on the information contained in this announcement and in particular, the JORC Code, 2012 Mineral Resource for Silver Swan as of May 2016, together with independent geotechnical studies, determination of production targets, mine design and scheduling, metallurgical testwork, external commodity price and exchange rate forecasts and worldwide operating cost data.

FORWARD LOOKING STATEMENTS:

This release contains certain forward looking statements including nickel production targets. Often, but not always, forward looking statements can generally be identified by the use of forward looking words such as "may", "will", "except", "intend", "plan", "estimate", "anticipate", "continue", and "guidance", or other similar words and may include, without limitation, statements regarding plans, strategies and objectives of management, anticipated production and expected costs. Indications of, and guidance on future earnings, cash flows, costs, financial position and performance are also forward looking statements

Forward looking statements, opinions and estimates included in this announcement are based on assumptions and contingencies which are subject to change, without notice, as are statements about market and industry trends, which are based on interpretation of current market conditions. Forward looking statements are provided as a general guide only and should not be relied on as a guarantee of future performance.

Forward looking statements may be affected by a range of variables that could cause actual results or trends to differ materially. These variations, if materially adverse, may affect the timing or the feasibility and potential development of the Silver Swan underground mine.