



Talisman Deep Project – Napoleon Lead

Technical Presentation – March 2021

Disclaimer

This presentation has been prepared by Tamaska Oil and Gas Limited (Company), based on information available as at the date of this presentation. The information in this presentation is provided in summary form and does not contain all information necessary to make an investment decision.

The information contained in this presentation is not investment or financial product advice and is not intended to be used for the basis of making an investment decision. The Company strongly suggests that investors obtain their own advice before making any investment decision.

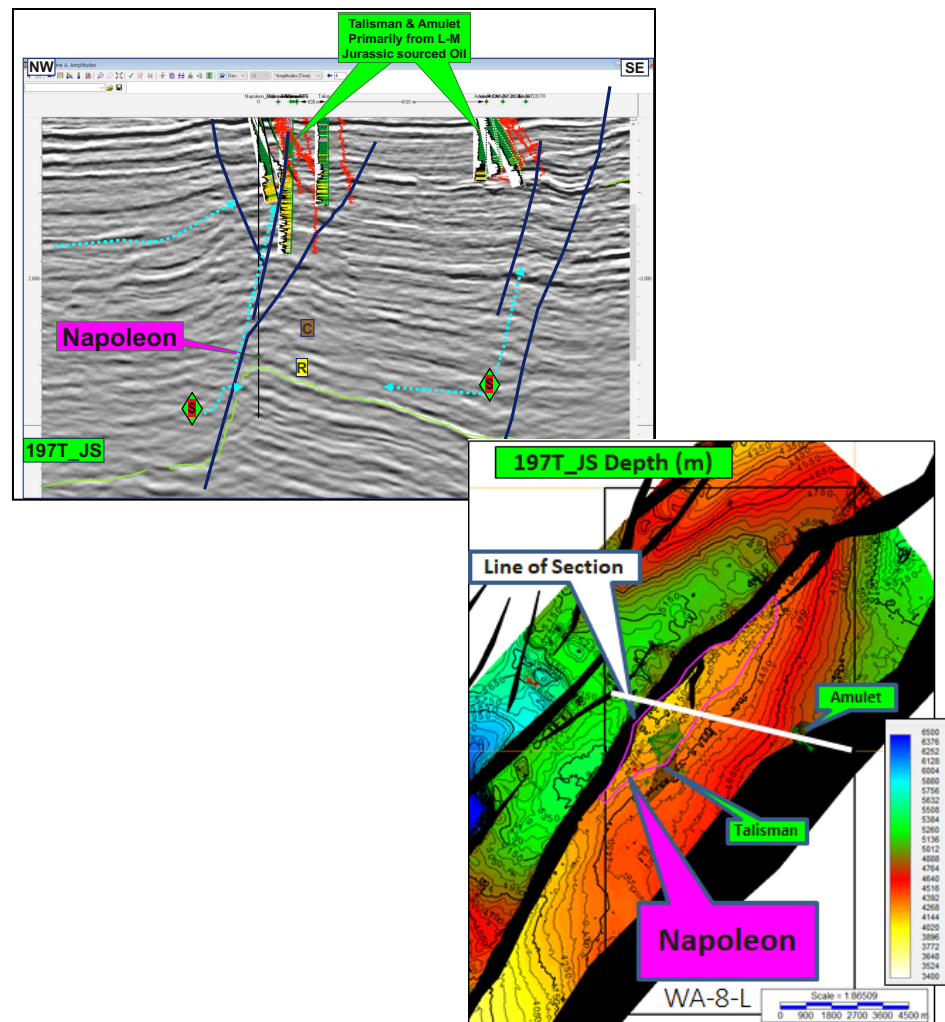
The Company has prepared this document based on information available to it at the time of preparation. No representation or warranty, express or implied, is made as to the fairness, accuracy or completeness of the information, opinions and conclusions contained in this presentation.

To the maximum extent permitted by law, the Company, its related bodies corporate (as that term is defined in the Corporations Act) and the officers, directors, employees, advisers and agents of those entities do not accept any responsibility or liability including, without limitation, any liability arising from fault or negligence on the part of any person, for any loss arising from the use of the presentation or its contents or otherwise arising in connection with it.

For further detail in relation to the Talisman Deep Project, please refer to the Company announcement lodged with the ASX on 22 February 2021.

Napoleon

1. Introduction
2. Regional Aspects
3. Structure & Charge
4. Reservoir and Seal
5. Summary

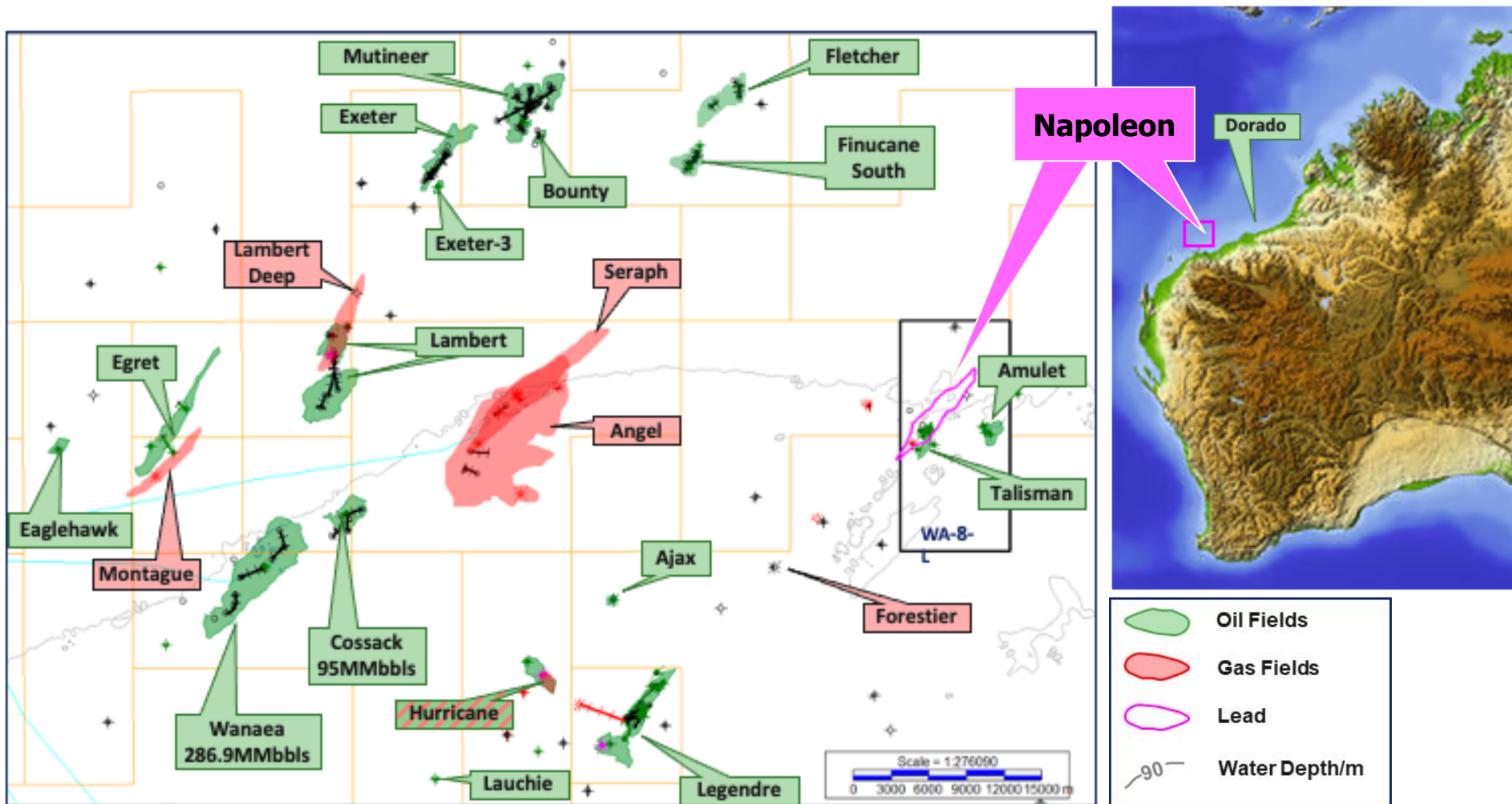


Napoleon - Introduction

- TMK owns 20% of the Talisman Deep Project, which contains the Napoleon structure
- Located in WA-8-L below Talisman in the Barrow-Dampier Sub-basin
- Simple large structure - 3D reprocessing in progress - target size similar to Dorado and neighbouring Wanaea
- 80-90m water depth
- Proven productive reservoir (North Rankin Formation) at approx. 4,200m
- Proven reservoir/seal (Murat Siltstone) pair
- Charge – structure located in the liquids rich part of the basin dominated by charge from Lwr-Mid Jurassic. Geochemical modelling in progress.
- Full technical evaluation with independent prospective resource estimate underway – target June 2021

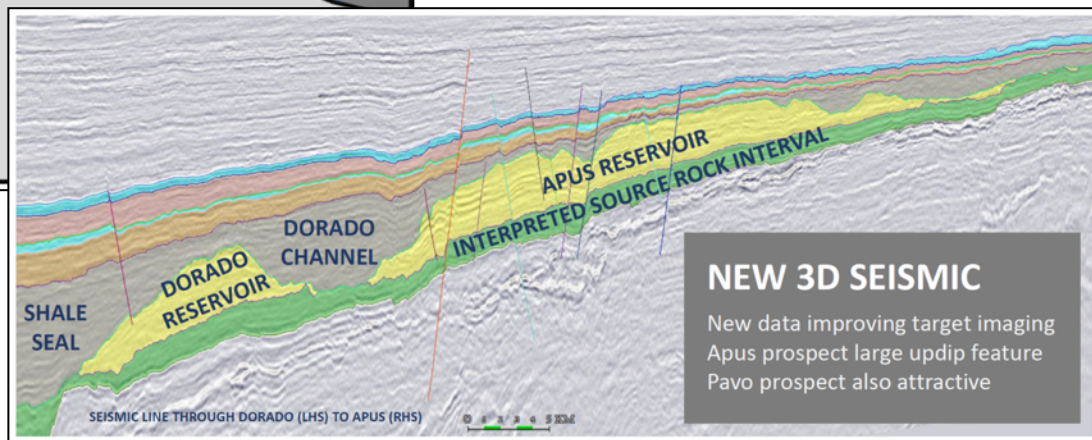
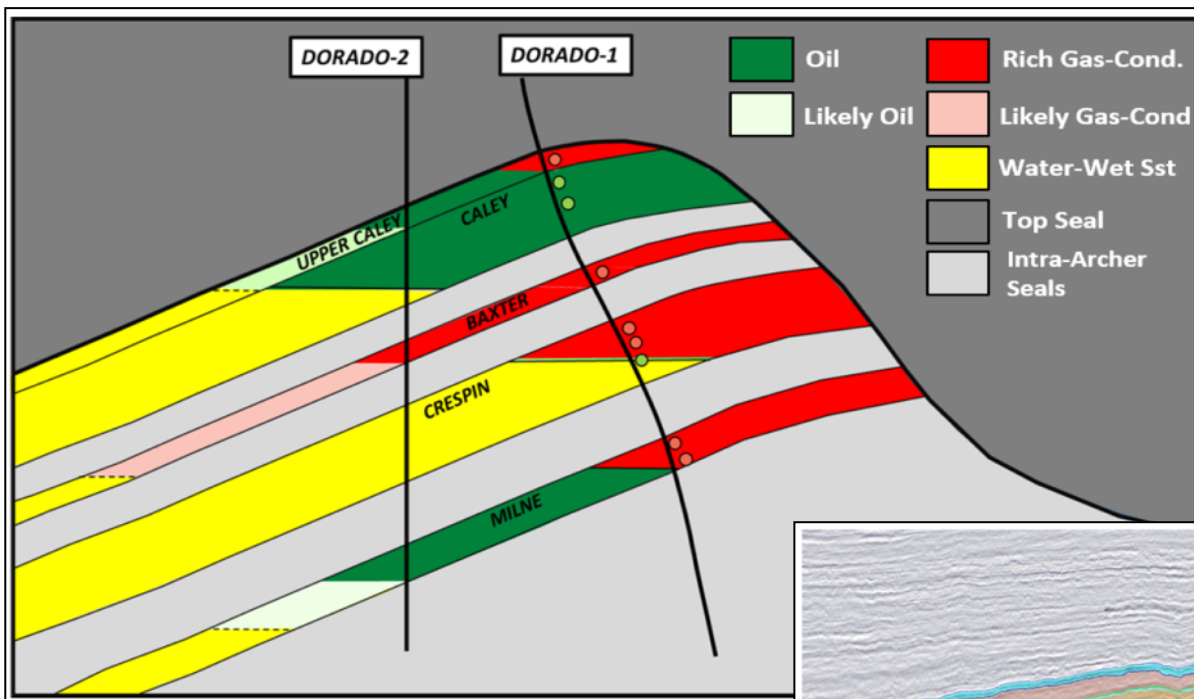
WA-8-L Location

Napoleon in liquids rich Barrow-Dampier Sub-basin



Exploring in similar way to Dorado

Superior Imaging -> Discovery



Ref: <https://www.carnarvon.com.au/wp-content/uploads/2020/07/Investor-Presentation.pdf>

3D Pre-SDM Reprocessing

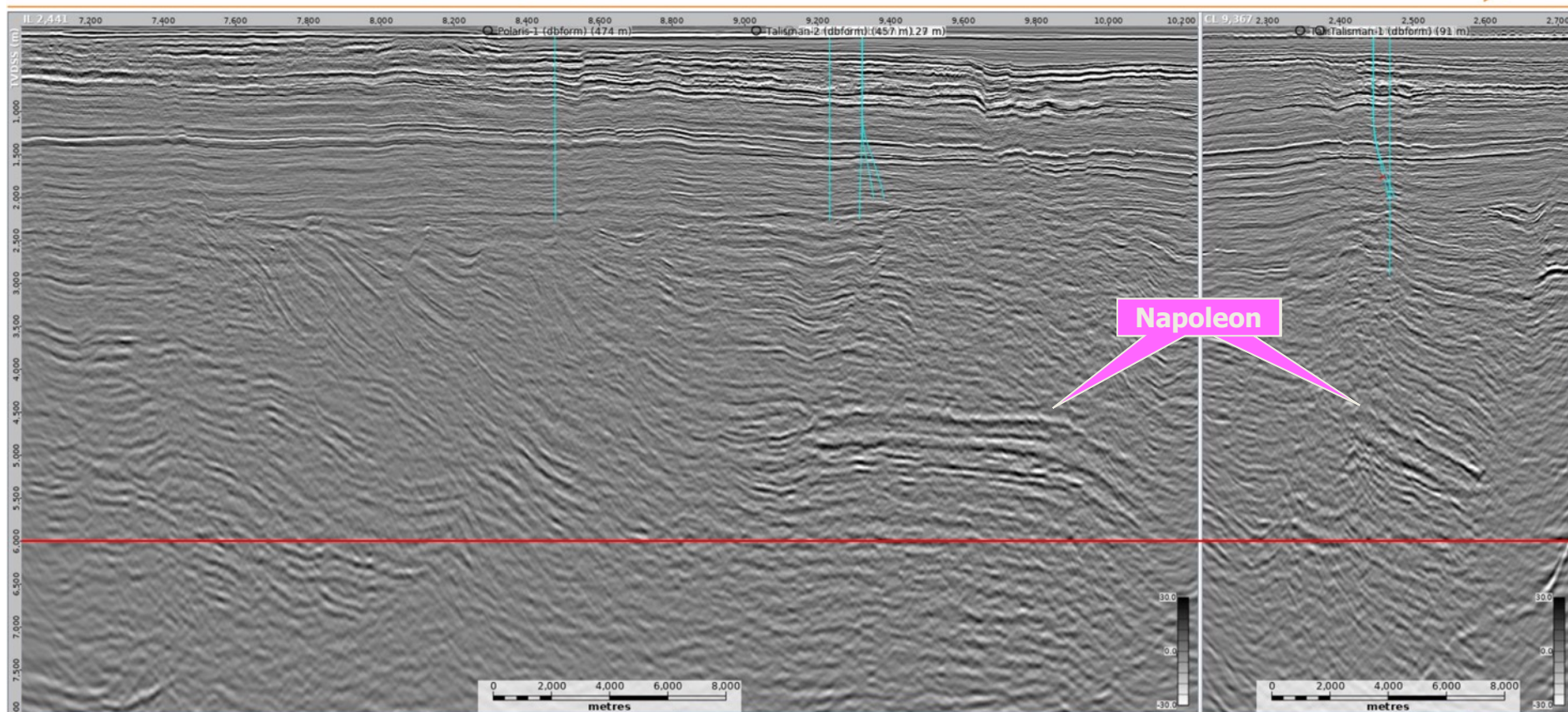
- Panaeus 3D seismic is being reprocessed by DUG (Down Under Geophysical), using the largest computer processing power in the southern hemisphere
- The project is being supervised by industry expert - Debenham's Geophysical Consultancy
- Completion - April 2021
- Improvements in seismic technology since Panaeus 3D being acquired:
 1. Broadband
 2. 3D demultiple techniques
 3. Enhanced noise attenuation
 4. Refraction tomography
 5. Full waveform inversion
 6. Pre-Stack Depth (p-SDM) migration



2020 Pre-SDM Strike & Dip Lines Superior Imaging

PreSDM stack (5-35°) | Amplitude Q corrected: Half-aperture 5,000 m

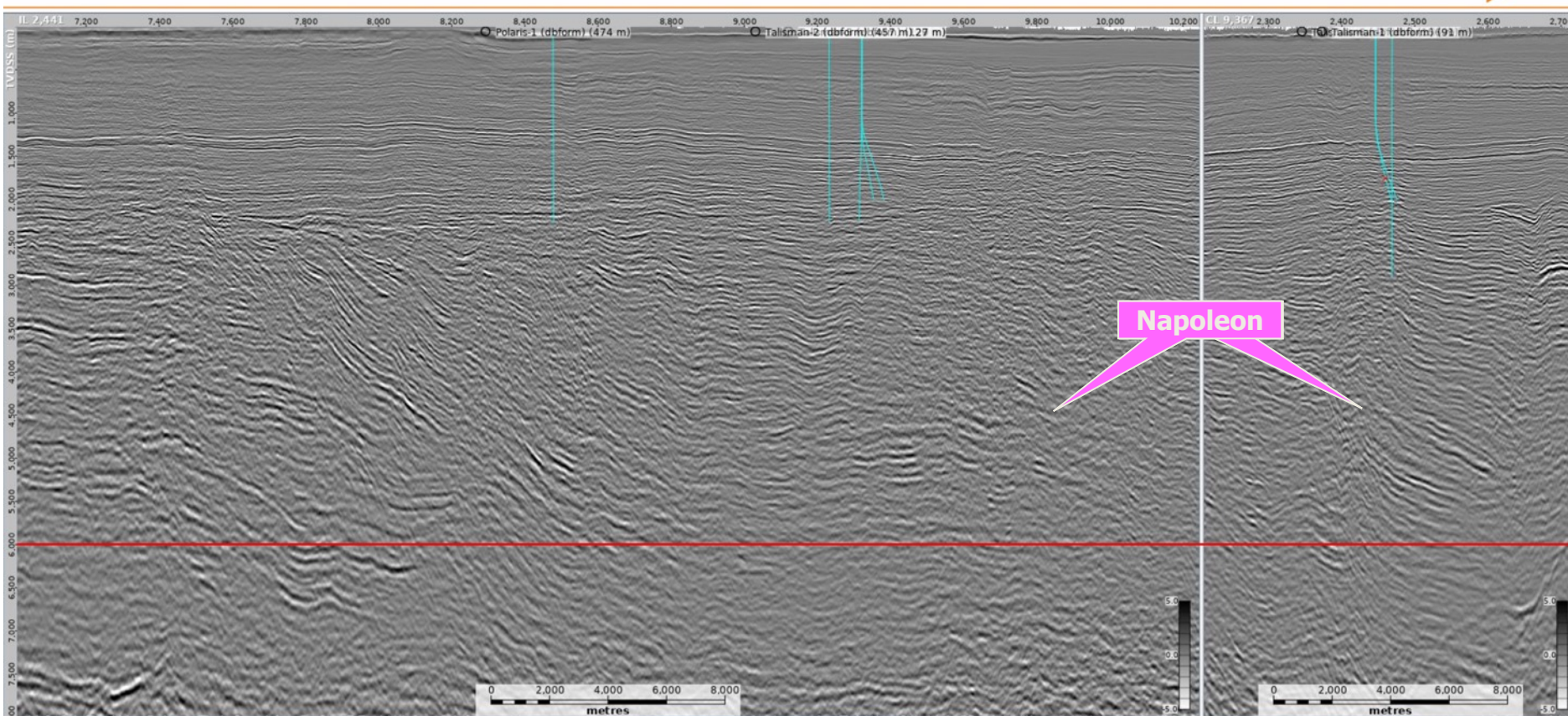
IL 2441 | CL 9367; TVDSS 6000 m marked in red (contracted output depth)



2002 Original Strike & Dip Lines Poorer Imaging

Panaeus legacy stack

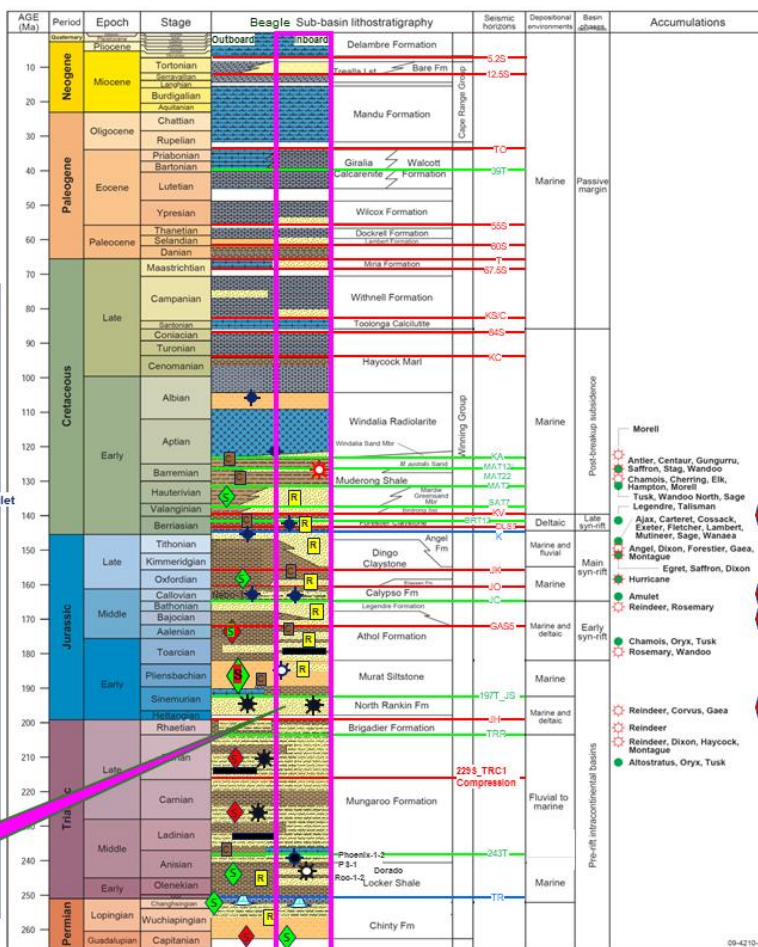
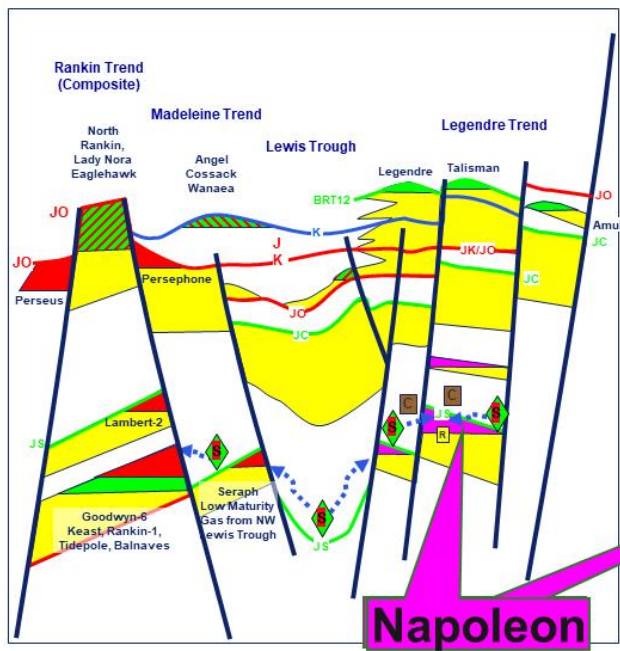
IL 2441 | CL 9367; TVDSS 6000 m marked in red (contracted output depth)



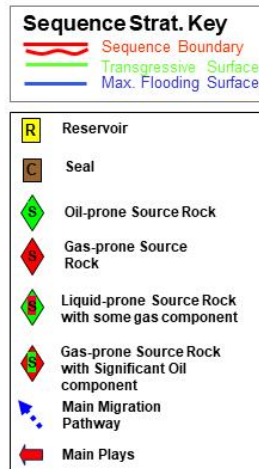
- Hydrocarbon charge is addressed by geochemical modelling that involves:
 1. Determining the type of source rocks available in the area;
 2. Determining the type of hydrocarbons present in nearby wells/fields, correlating the two;
 3. Predicting timing and amount of hydrocarbons generated ('expulsion');
 4. Modelling hydrocarbon movement pathways from source to trap ('migration'); and
 5. Predicting the volume and type of hydrocarbons (oil and gas) trapped in the Napoleon structure.
- This study is being undertaken by industry expert - Source Geoscience Pty Ltd

Stratigraphy, Plays, Traps & HC migration WA-8-L & surrounds

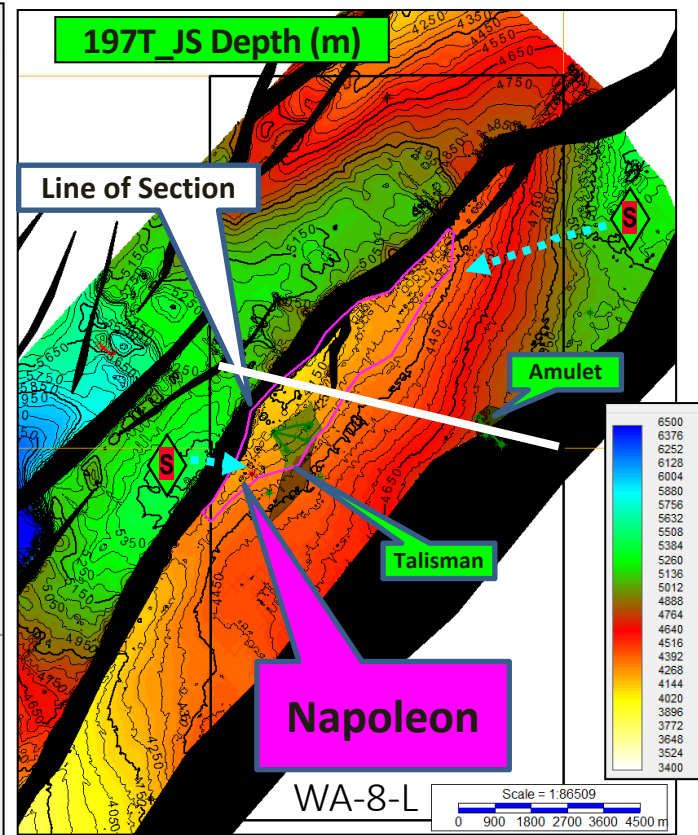
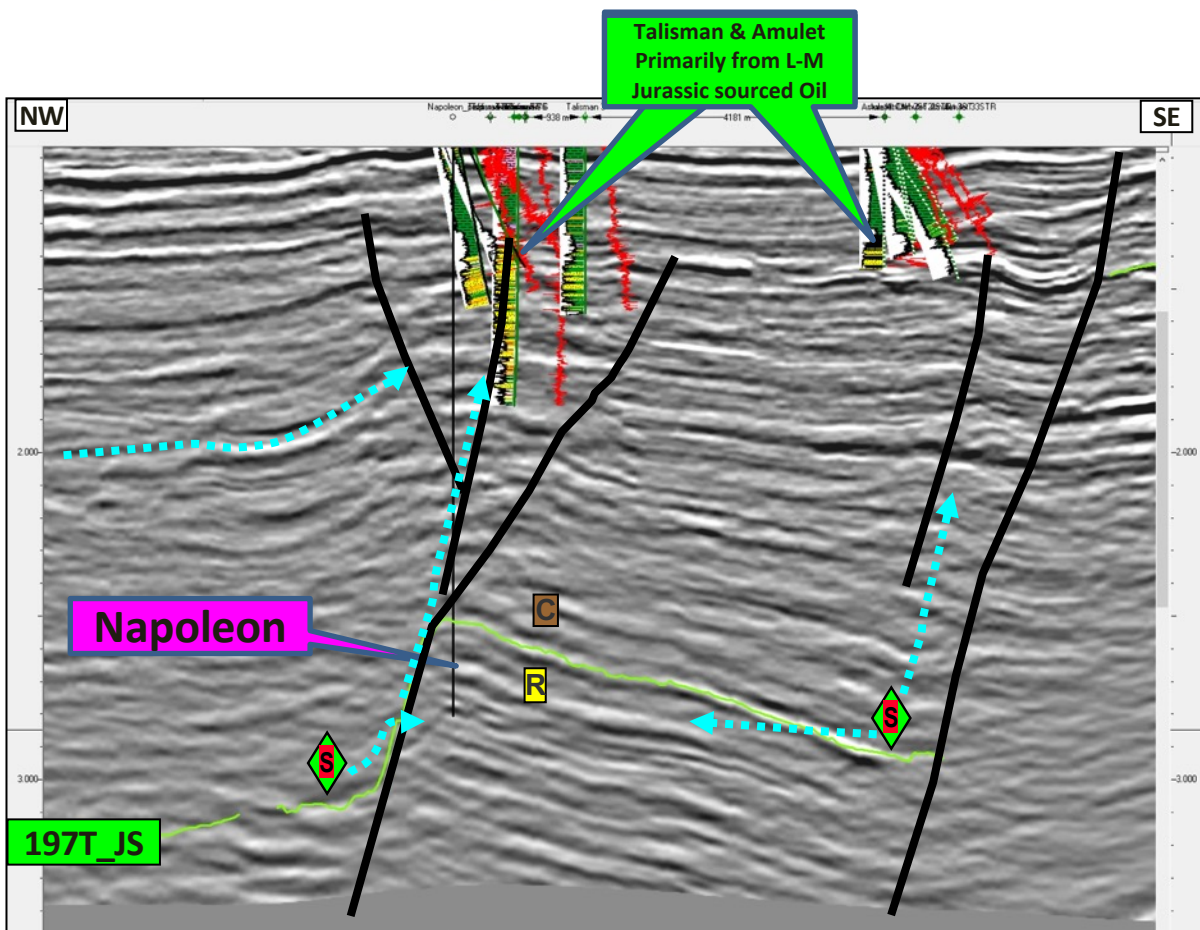
Trap & HC Migration



Targets



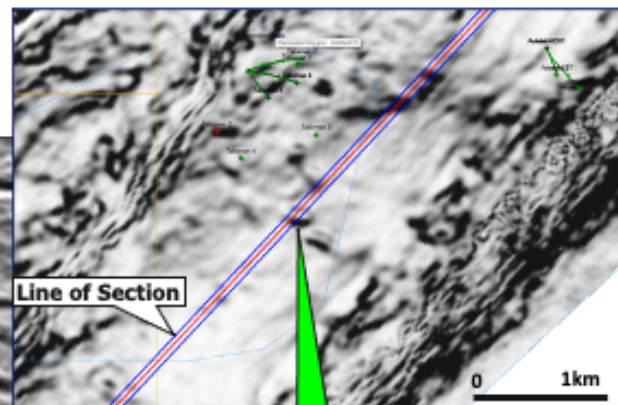
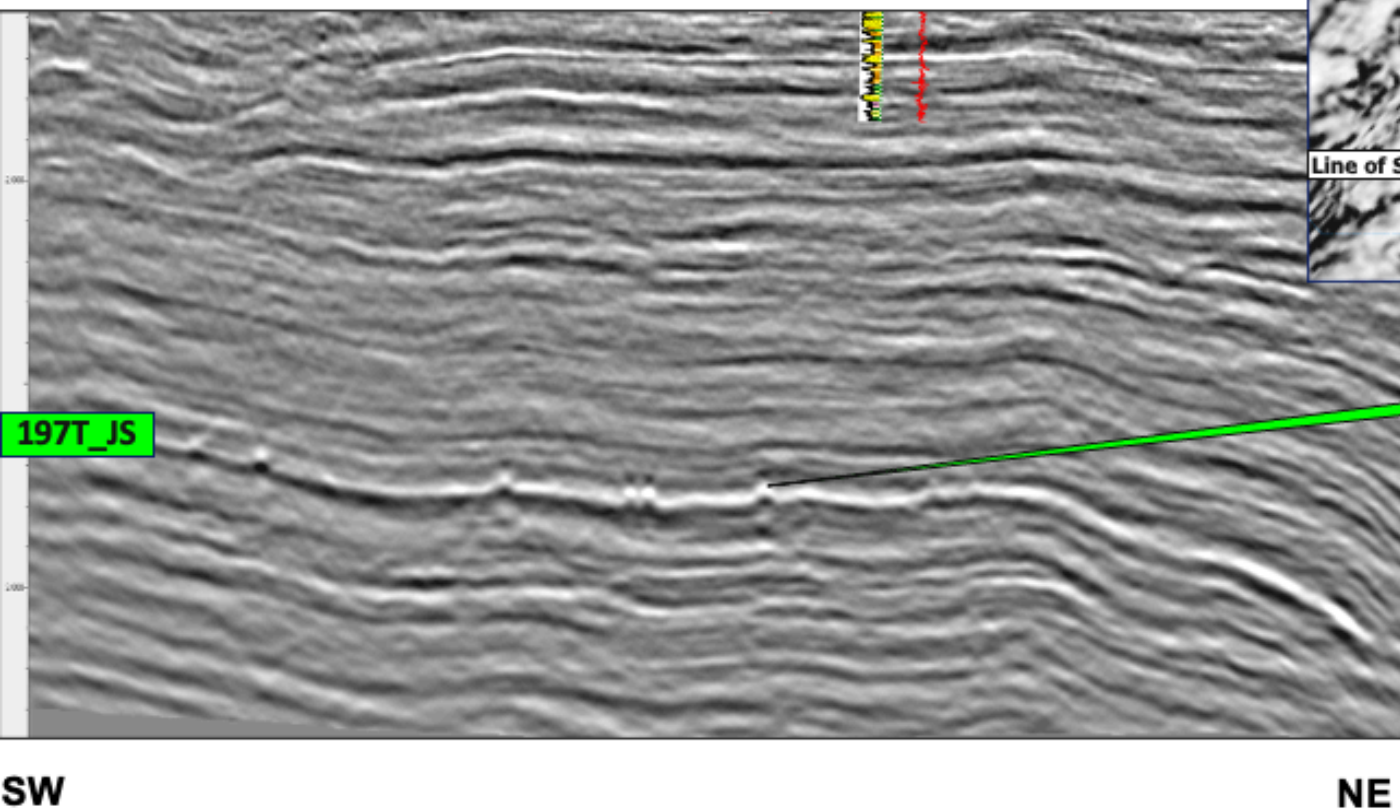
Large simple structure with in-situ liquids rich mature charge



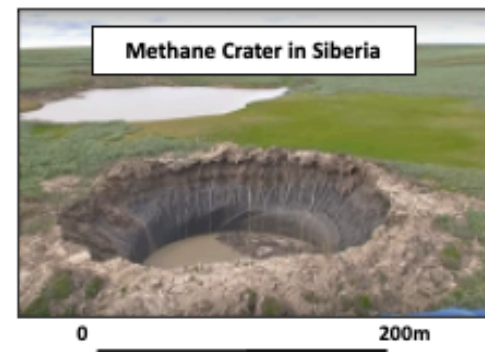
Evidence of HC escape features

Pockmarks at top reservoir

Seismic Coherency at Reservoir



Top Reservoir
Pockmark



Napoleon – Summary

- Located in the premier Barrow-Dampier Sub-basin – NE liquids rich corner
- Reprocessing and basin analysis studies (including geochemical modelling) in progress
- Large simple structure - significant potential volume
- Simple tilted fault block with proven reservoir/seal pair and two local liquid prone charge kitchens
- Evidence of hydrocarbon charge (pockmarks) on preliminary reprocessed 3D seismic
- Approx. 4,200 to 4,400m main target depth
- Known productive reservoir within massive sandstone -> good production rates expected
- Additional targets in the Lower-Middle Jurassic
- Jack-up water depth (approx. 85m)
- Preliminary estimated dry hole cost: A\$45MM

TMK Capital Structure

TMK Capital Structure	Shares	Performance Shares
Existing	895,000,000	
Consideration for acquisition of 20% interest in the Talisman Deep Project (Napoleon)	45,000,000	45,000,000*
Total	940,000,000	45,000,000*

* The terms and issue of the Performance Shares is subject to ASX approval and TMK shareholder approval. Performance Shares convert to ordinary shares on the first to occur of either:

- a. An independent estimate assesses the 2U (P50) prospective recoverable resource of the Napoleon to be greater than 120 million boe (barrels of oil equivalent which is oil plus gas converted at 6mcf = one barrel); or
- b. An authorization for expenditure (AFE) in relation to the first exploration well on Talisman Deeps being issued and TMK resolving to participate in respect of its share of the AFE.

TMK cash position approximately A\$2.6m

Board and Management

Brett Lawrence M.Pet.Eng., B.Eng., B.Com. – Managing Director

Brett has 16 years of diverse experience in the oil and gas industry. He worked with Apache Energy for over eight years, performing roles in drilling engineering, reservoir engineering, project development and commercial management before seeking new venture opportunities. Brett currently holds a board position as a non-executive Director of Calima Energy Ltd (ASX: CE1).

Joseph Graham B.Sc., M.Pet.Eng. – Technical Director

Joseph has 22 years experience as a Petroleum Engineer. Most recently he has lead multi-disciplined teams focused on production enhancement of marginal oil and gas opportunities. He is a joint founder of private equity firm Skye Energy Ventures which makes energy investments globally.

Logan Robertson M.Fin., B.Com. – Non Executive Director

Logan is a Portfolio Manager at Hoperidge Capital, the Family Office of Navitas founder Rod Jones. Hoperidge is a substantial holder in Tamaska. Logan has a Bachelor of Commerce from UWA and Masters of Finance from UNSW.

Tim Wise B.Sc. – Commercial Director

Tim is an executive experienced in the growth of early stage businesses. He regularly provides strategic advice to local, national and multinational companies. He is a founder and former CEO of The Tap Doctor and ASX listed Kalina Power (ASX : KPO). He is currently a director of Phos Energy, Graft Polymer and Melchor.

Dariusz Jablonski B.Sc. – Geoscience Lead

Dariusz has 30 years experience as a Geoscientist in the oil and gas industry. He has primarily been focused on the greater north west shelf of Australia (the location of Napoleon), and has worked on most basins across the world. Dariusz has authored numerous publications on conventional and unconventional geoscience matters in the industry.



102 Forrest Street, Cottesloe WA 6011

PO Box 453, West Perth WA 6872

Tel: +61 8 9320 4700

Email: info@tamaska.com.au

www.tamaska.com.au