

31/03/2021

ASX Announcement (AMX)

METROMAP PROVIDING RAPID ANALYTICS SERVICES – SUPPORTING NSW FLOOD RECOVERY

Aerometrex Limited (ASX: AMX) is pleased to announce that it has developed a range of fast-response analytics services, in addition to its aerial imagery capabilities and dataset, to support enterprise customers make better informed and more timely decisions.

Technical developments to the MetroMap aerial imagery subscription platform have enabled Aerometrex to provide rapid analytics capabilities. These new capabilities harness the power and agility of the MetroMap platform, as well as third party datasets.

Given the immense impact of the NSW floods, Aerometrex has utilised these new capabilities to immediately support the NSW Flood Emergency response activities through advanced analytics of the areas flooded in NSW. In particular, these services have described the flood extents to Aerometrex's industry and government partners in order to assist them in helping affected NSW communities recover in the coming weeks and months.

The system utilised synthetic aperture radar satellite imagery of the flooded areas sourced from COPERNICUS Emergency Management Service, headquartered in Europe, the MetroMap platform and aerial imagery base, and the Geoscape building footprint and cadastral dataset also available on MetroMap as primary data sources.

These datasets were combined and analysed within MetroMap to produce a list of property addresses and specific buildings potentially affected by the flooding. This information is vital to many organisations directly involved in managing and helping communities recover from this event, including:

- Emergency services
- Local Government
- Builders
- Fencing companies
- Construction and engineering companies
- Insurance companies.

Mark Deuter, Managing Director of Aerometrex, commented: "The scale of this disaster makes it extremely difficult to identify and assist individual people who have been affected on a case-by-case basis. The advanced analytical techniques developed by our team and supported by our data partners provides this information within days of receiving the satellite imagery. This is an outstanding example of the analytical power and capabilities of the MetroMap platform to provide mission-critical data, in this case supporting the reconstruction and recovery process following the NSW floods."

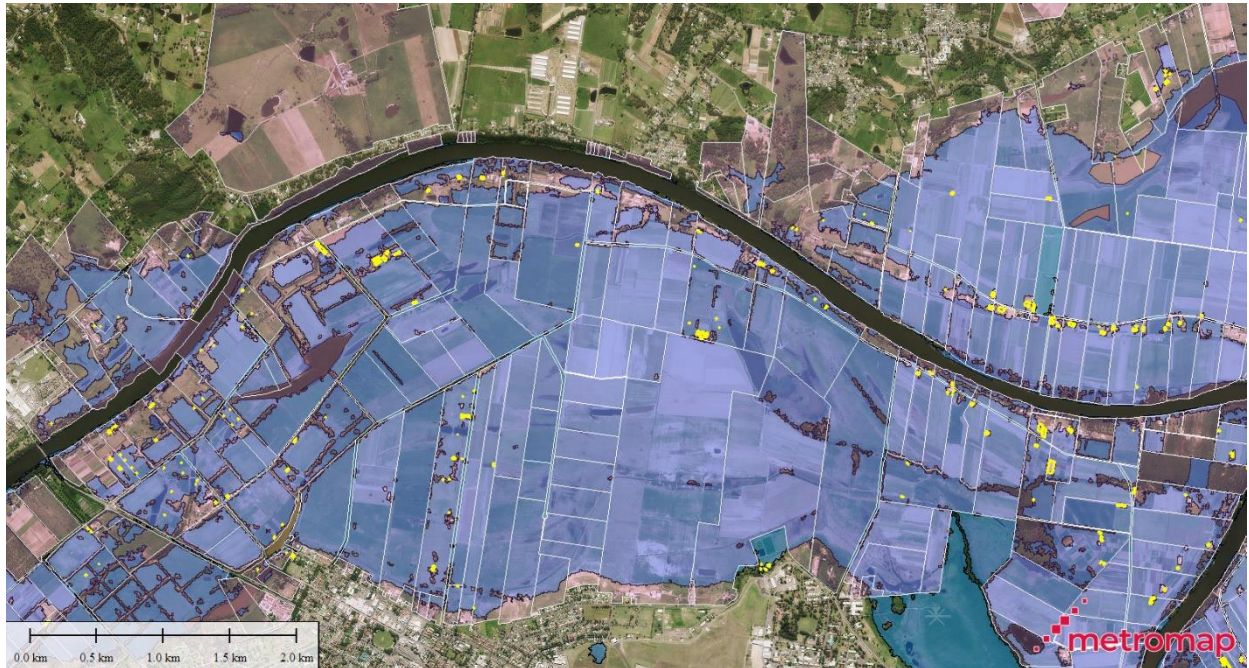


The flood dataset should not be viewed as a source of live information to be used as a decision-making tool during an active emergency.

Up to date information on Community Advice and Warnings due to the ongoing NSW Flood Emergency should be accessed at:

<https://www.ses.nsw.gov.au/>

<http://www.bom.gov.au/nsw/warnings/>



This release is approved by the Board of Directors of Aerometrex Limited.

MetroMap screenshot: Flood extents, cadastre, buildings affected

- ENDS -

ADDITIONAL INFORMATION

For further information, contact as below:

Mark Deuter
Managing Director
P: +61 8 8362 9911
E: investorrelations@aerometrex.com.au

Justin Foord
Investor Relations, Market Eye
P: +61 402 600 691
E: justin.foord@marketeye.com.au

W: <https://aerometrex.com.au/asx-announcements/>

MetroMap: www.metromap.com.au



ABOUT AEROMETREX

Aerometrex Limited is a professional geospatial technology business specialising in aerial photography, photogrammetry, LiDAR, 3D modelling and aerial imagery subscription services.

The company listed on the ASX in December 2019 to raise capital to fund its growth. The company has a clear strategy to provide value to its shareholders by providing high-quality, accurate aerial imagery and LiDAR products to a growing client base.

AMX has strong Board and Executive teams, with a combined staff experience in the industry of 930 years total.

