



## Q1 FY22 Quarterly Results Presentation

*The World's First Omnidata Intelligence Company*

# About Skyfii

## Digital & Data Transformation for Physical Venues

Our **mission** is to be the world's most trusted partner for responsibly using technology and data to positively measure, manage and influence relationships between people, and the places they visit.

Our **vision** is to improve visitor experiences by understanding human behaviour.

**11B** data points  
processed everyday

**90,000** connected IoT  
devices

**11,000+** venues

**+200** data integrations



# Data Intelligence for physical spaces

- Skyfii is fully integrated with the hardware and software offerings of the largest tech vendors such as Aruba, Cisco, Meraki and Ruckus.
- Skyfii has experience working with large volumes of heterogeneous data sets including; Survey, Wi-Fi, LiDAR, Camera, People Counters, Web, Social, Mobile / App, Sales / POS, Media / Campaign, CRM and Weather.
- Any data source that has an API or is available in a standard format such as CSV / Excel, SQL etc can be integrated.





# End-to-End Product & Services offering



## Technology Solutions

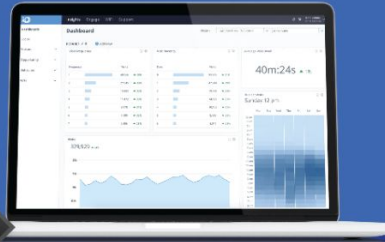
WiFi / People Counting /  
Cameras / IoT Devices/ LiDAR

**Solution Design**

**Project Management**

**Systems Integration**

**Managed Services**



## Skyfii IO Platform

Software-as-a-Service

**IO Connect**

**IO Insight**

**IO Engage**

**IO Labs**



## Professional Services

Data Science / Digital Marketing /  
Customer Success

**Digital & Data Strategy**

**Data Science**

**Digital Marketing**

**Customer Success**

# Key Uses for Skyfii across key verticals

We provide data analytics solutions to over 11,000 venues in +40 countries



## Commercial Property

- Occupancy Management
- Space Utilisation
- HVAC optimisation
- Visitor Registration & Contact Tracing



## Retail & Retail Property

- Marketing Automation
- Retail Planning
- Trade Area Analysis
- Customer Sentiment & Satisfaction
- Sales Conversion



## Major Transport Hubs

- Queue Management
- Passenger Flow Management
- Workforce Management
- Retail Conversion



## Sporting Stadia & Events

- Fan Engagement
- Crowd Analytics
- Event Attribution & Performance Analysis
- Retail Conversion
- Sponsorship & Advertising



## Govt. Agencies & Cultural Institutions

- Event & Exhibition Attribution & Performance
- Exhibition Planning
- Occupancy Management
- Visitor Engagement
- Retail Conversion



---

# Financial & Operating Highlights



# Q1 FY22 Results

Operating  
Revenue  
+48%<sup>1</sup>

\$5.1m

Recurring  
Revenues  
+54%<sup>1</sup>

\$3.5m

Cash at  
Bank

\$5.8m

Debt  
Facility  
Undrawn

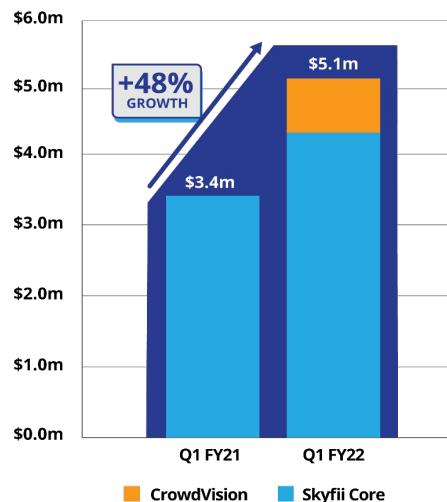
\$2.0m

ARR

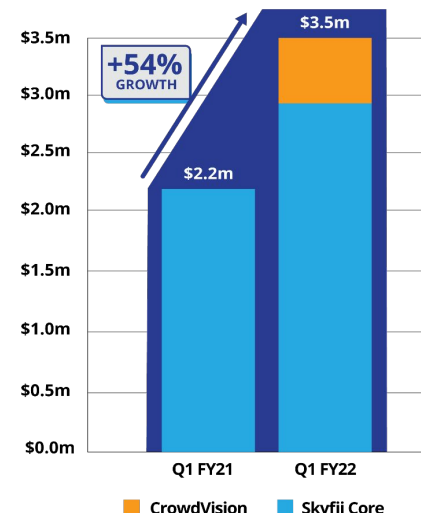
\$14.2m

1. Versus Previous Corresponding Period (Q1 FY21)  
2. Annual Recurring Revenue (ARR) based on contracted recurring revenues as at September 2021 - inclusive of temporary suspensions as a result of COVID-19 & contracted revenues from the acquisition of CrowdVision announced 6 April 2021

### Total Operating Revenue



### Recurring Revenue



## Commentary

**CrowdVision** - During the quarter, \$1.3m of cash was utilised to repay CrowdVision finance debt and aged payables at acquisition. These are one time payments and are reflected in Skyfii net operating cash outflows of \$2.9m for the Q1 FY22 quarter

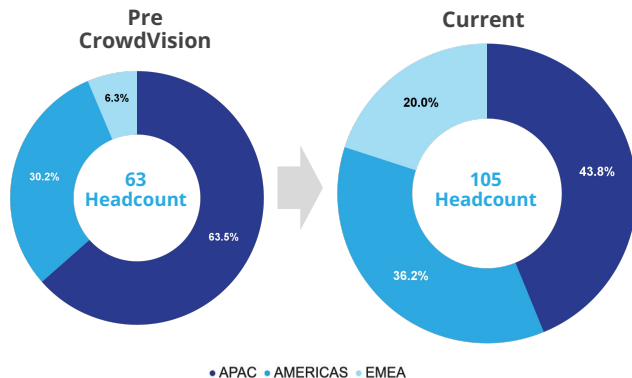
**ARR Growth** - Incremental ARR added during the quarter was \$0.5m, less customer churn of \$0.3m, delivered net ARR growth of \$0.2m QoQ. Strong build in ARR growth expected for the balance of the year

# Headcount Analysis

Executing on hiring strategy to bolster international expansion

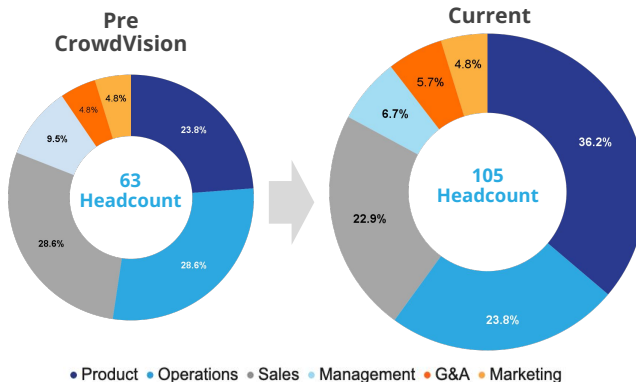


## BY REGION



	Skyfii	CrowdVision	New Hires	Current
APAC	40	0	6	46
AMERICAS	19	14	5	38
EMEA	4	17	0	21
<b>TOTAL</b>	<b>63</b>	<b>31</b>	<b>11</b>	<b>105</b>

## BY FUNCTION



	Skyfii	CrowdVision	New Hires	Current
Product	15	23	0	38
Operations	18	4	3	25
Sales	18	3	3	24
Management	6	0	1	7
G&A	3	1	2	6
Marketing	3	0	2	5
<b>TOTAL</b>	<b>63</b>	<b>31</b>	<b>11</b>	<b>105</b>

## Capital Raise - Use of Funds Rationale

The acquisition of CrowdVision and subsequent capital raise has been a catalyst for the company to invest for growth, with a particular focus on the North America and EMEA regions.

The company remains committed to investment into Sales, Marketing and Service delivery headcount to drive additional revenue growth in all regions



# EMEA Spotlight: Recent Contract Wins

Post the end of the quarter, the Company announced key contracts in the EMEA region with a combined **Total Contract Value of over \$1.6m**, including:



Majid Al Futtaim (MAF), owner and operator of shopping malls, retail outlets and leisure centres in the Middle East, including Mall of the Emirates



Quick Service Restaurant operator, McDonald's signed a three-year deal for the provision IO Connect Guest WiFi and IO Insights data analytics platform across 183 restaurants across the UAE



International shopping centre group McArthurGlen Designer Outlets signed a three-year contract extension across 24 designer outlet malls in the UK and Europe.

# CrowdVision Integration and Update

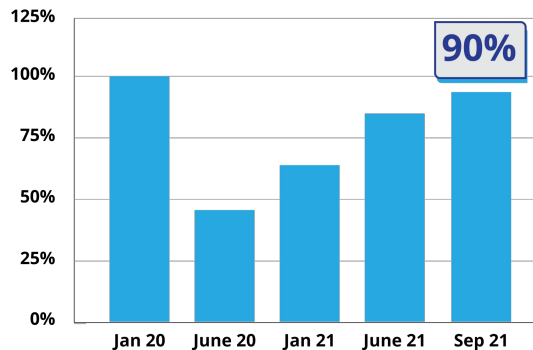
- Completed the acquisition of CrowdVision for a total consideration of AU\$10m (of which 56% funded via equity issued to CrowdVision at a Skyfii share price of \$0.209). Breakdown listed below:

Upfront cash consideration	\$1.3m
Net debts owed by CrowdVision	\$3.1m
Deferred equity Consideration (issued a \$0.209)	\$5.6m
<b>Total Consideration</b>	<b>\$10.0m</b>

- Skyfii's integration of CrowdVision has performed ahead of expectations
- The transaction was strategically counter-cyclical and provides significant scope for Skyfii to generate revenue uplift as global air travel

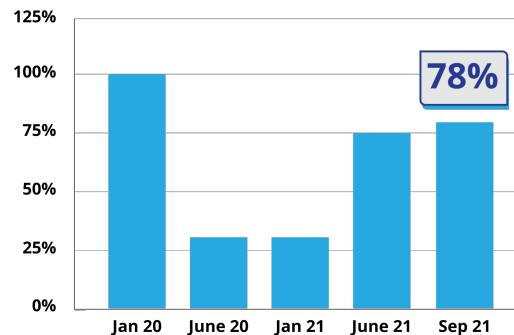
## North American Air Travel

(7 day seat average, YoY compared to 2019)



## European Air Travel

(7 day seat average, YoY compared to 2019)



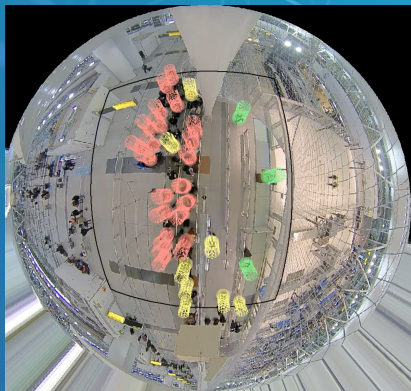
*Global air travel is recovering after the impact of COVID-19*

*Skyfii generated approximately ~15% of Q1FY22 revenue from the airport vertical*

*Over US\$3.1m in client evaluation & contract negotiation in the airport vertical*

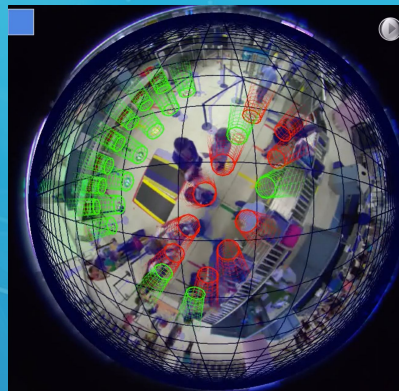
*Skyfii is operating in over 80 airports globally*

*USA passenger numbers are back at pre-COVID levels*



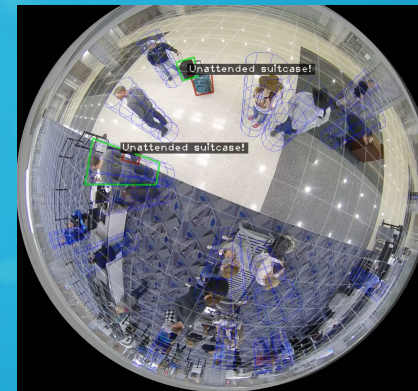
## SOCIAL DISTANCING

Metrics to measure crowd safety



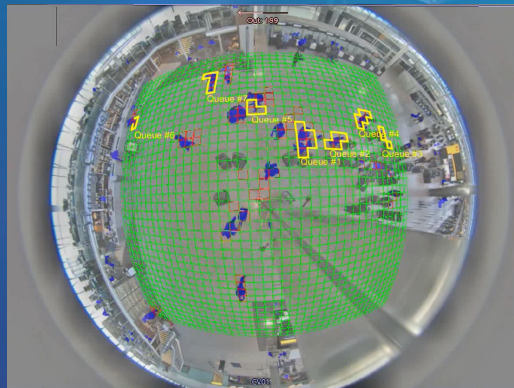
## SECURITY CHECKPOINT

Checkpoint stuffing optimisation



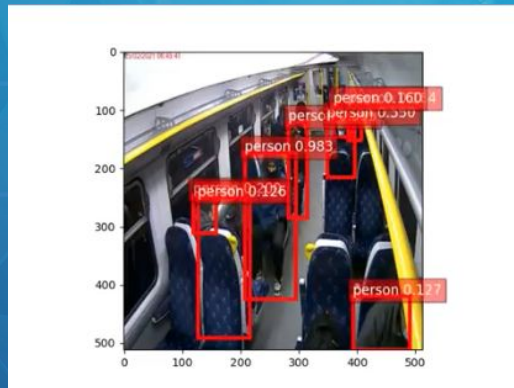
## TAXI RANK

Curb to gate



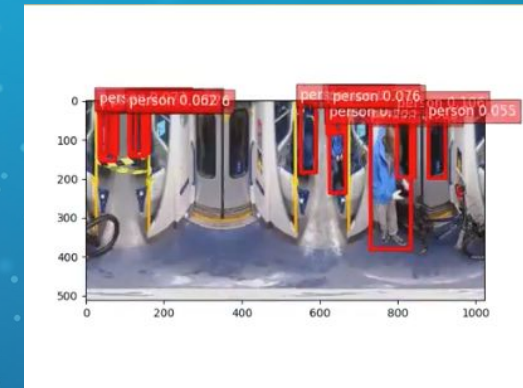
## DYNAMIC QUEUES

Automatic queue detection



## TRAIN CARRIAGE OCCUPANCY

Real time carriage occupancy management



## TRAIN STATION

Platform dwell and occupancy



---

# Outlook

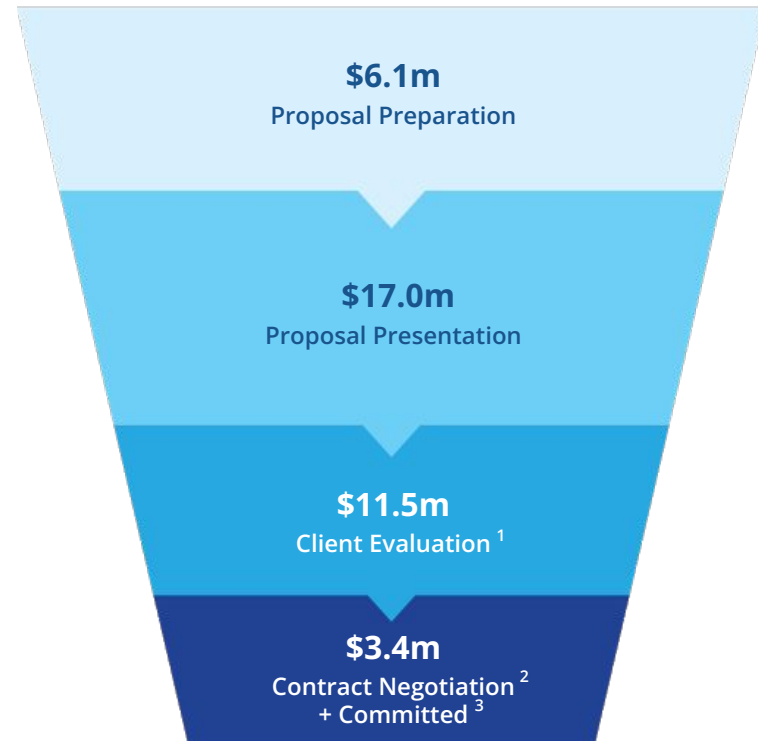




# Sales Pipeline Primed for Conversion

- Continued flow of enquiries from a spread of verticals including smart cities, commercial buildings, airports, healthcare facilities, hotels, stadiums and retail
- International markets representing >65% of sales opportunities in pipeline
- ~23% of deals have the potential to influence 1H FY22
- With over \$38m in advanced stage deal value, we are well positioned to deliver even stronger revenue growth in the coming quarters.

## 12-Month Rolling Pipeline



<sup>1</sup> Client Evaluation - a proof of concept, the customer understands the value proposition of the offering and is expressing interest to proceed but requires more time to evaluate or requires internal budget approval on the proposal before proceeding any further.

<sup>2</sup> Contract Negotiation - sales have firmed up pricing and issued it to the customer, the customer has provided an indication that they wish to proceed and we are in the process of negotiating the final commercial terms.

<sup>3</sup> Committed - the customer has committed to the commercial terms in writing but is not ready to be invoiced yet.

# Outlook & Strategy

Key areas of  
focus for FY22:



Continued investment into marketing activities to drive quality leads across all markets and products



Increased investment into Sales, Support and Services headcount to drive additional revenue growth in all regions



Convert pipeline to deliver ARR ahead of analyst estimates of \$20m



Significant focus on key verticals including Airports, Stadiums, Grocery, Corporate Offices, Universities, Schools and Municipalities



Expansion of our reach in to the rapidly growing and lucrative UAE region



Integration of the CrowdVision technology solution into the Skyfii offering and retirement of the legacy platform

## Important Notice and Disclaimer

This presentation has been prepared by Skyfii Limited (ACN 009 264 699) (Skyfii or the Company). The information contained in this presentation is current at the date of this presentation. The information is a summary overview of the current activities of the Company and does not purport to be all inclusive or to contain all the information that a prospective investor may require in evaluating a possible investment. This presentation is for general information purposes and is not intended to be and does not constitute a prospectus, product disclosure statement, pathfinder document or other disclosure document for the purposes of the Corporations Act and has not been, and is not required to be, lodged with the Australian Securities & Investments Commission. It is to be read in conjunction with the Company's disclosures lodged with the Australian Securities Exchange.

The material contained in this presentation is not, and should not be considered as, financial product or investment advice. This presentation is not (and nothing in it should be construed as) an offer, invitation, solicitation or recommendation with respect to the subscription for, purchase or sale of any security in any jurisdiction, and neither this document nor anything in it shall form the basis of any contract or commitment. This presentation is not intended to be relied upon as advice to investors or potential investors and does not take into account the investment objectives, financial situation or needs of any particular investor which need to be considered, with or without professional advice, when deciding whether or not an investment is appropriate.

This presentation may contain information as to past performance of the Company. Such information is given for illustrative purposes only, and is not – and should not be relied upon as – an indication of future performance of the Company. The historical information in this presentation is, or is based upon, information contained in previous announcements made by the Company to the market.

This document contains certain "forward-looking statements". The words "anticipate", "believe", "expect", "project", "forecast", "estimate", "outlook", "upside", "likely", "intend", "should", "could", "may", "target", "plan" and other similar expressions are intended to identify forward-looking statements. Indications of, and guidance on, future earnings and financial position and performance are also forward-looking statements, as are statements regarding the Company's plans and strategies and the development of the market.

Such forward-looking statements are not guarantees of future performance and involve known and unknown risks, uncertainties and other factors, many of which are beyond the control of the Company, which may cause actual results to differ materially from those expressed or implied in such statements.

The Company cannot give any assurance or guarantee that the assumptions upon which management based its forward-looking statements will prove to be correct or exhaustive beyond the date of its making, or that the Company's business and operations will not be affected by other factors not currently foreseeable by management or beyond its control. Such forward-looking statements only speak as at the date of this announcement and the Company assumes no obligation to update such information. The release, publication or distribution of this presentation in jurisdictions outside Australia may be restricted by law. Any failure to comply with such restrictions may constitute a violation of applicable securities laws.

All references to dollars are to Australian currency unless otherwise stated.

To the maximum extent permitted by law, the Company makes no representation or warranty (express or implied) as to the accuracy, reliability or completeness of any information contained in this document. To the maximum extent permitted by law, the Company shall have no liability (including liability to any person by reason of negligence or negligent misrepresentation) for any statements, opinions or information (express or implied), arising out of, contained in or derived from, or for any omissions from this document, except liability under statute that cannot be excluded.



#### **Media**

John Rankin  
Chief Operating Officer  
*Skyfii*

**p:** +61 2 8188 1188

**e:** john.rankin@skyfii.com



#### **Investors**

Craig Sainsbury  
Executive Director  
*Market Eye*

**p:** +61 428 550 499

**e:** craig.sainsbury@marketeye.com.au

