



healius

2023 Annual General Meeting

28 November 2023

Forward-looking Statements

This presentation may include forward-looking statements about our financial results, guidance and business prospects that may involve risks and uncertainties, many of which are outside the control of Healius Limited. Readers are cautioned not to place undue reliance on forward-looking statements, which speak only as of the date that they are made, and which reflect management's current estimates, projections, expectations or beliefs and which involve risks and uncertainties that could cause actual results and outcomes to be materially different. Risks and uncertainties that may affect the future results of the company include, but are not limited to, adverse decisions by Governments and healthcare regulators, changes in the competitive environment and billing policies, lawsuits, loss of contracts or unexpected growth in costs. The statements being made in this presentation do not constitute an offer to sell, or solicitation of an offer to buy, any securities of Healius Limited. No representation, warranty or assurance (express or implied) is given or made in relation to any forward-looking statement by any person (including Healius Limited). In particular, no representation, warranty or assurance (express or implied) is given in relation to any underlying assumption or that any forward-looking statement will be achieved. Actual future events may vary materially from the forward-looking statements and the assumptions on which the forward-looking statements are based. Given these uncertainties, readers are cautioned to not place undue reliance on such forward-looking statements.

The value of Pathology



A trusted relationship between a patient and their GP



A reduction in costly and unnecessary secondary care



Stronger primary care



Earlier diagnosis



Better health outcomes



1,000,000 patients a week



1 in 3 Health problems seen by GPs requires **Pathology**



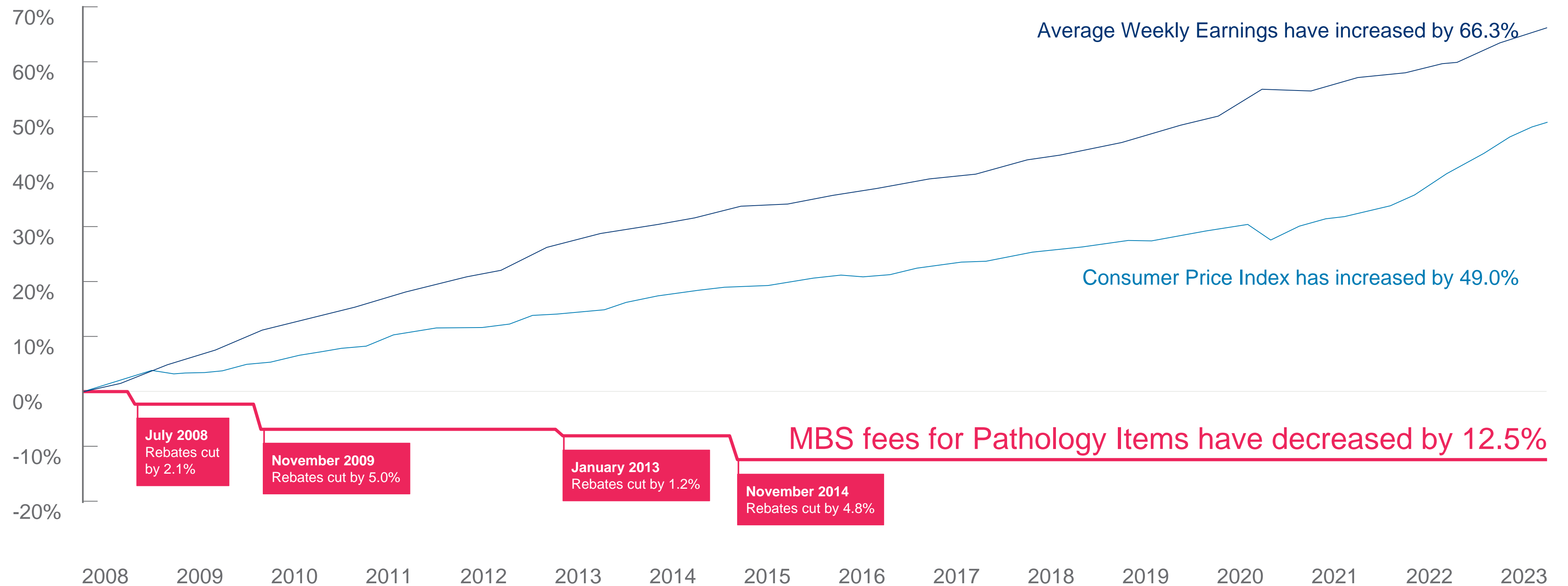
70% of all **medical treatment** decisions rely on **Pathology**



100% Of all **cancer diagnoses** rely on **Pathology**

Pathology Australia: Costs vs indexation last 15 yrs

Consumer Price Index, Average Weekly Earnings and MBS Pathology Fees JANUARY 2008 – MAY 2023



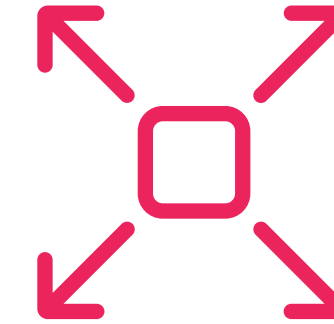
What we are doing: Pathology



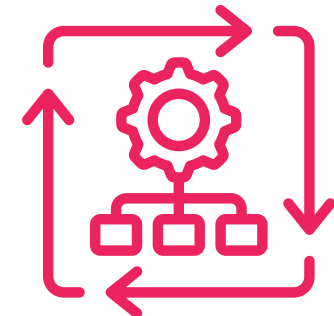
Align network infrastructure
to demand



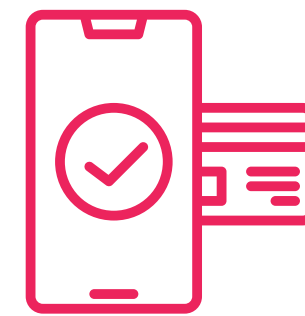
Driving
higher yield across
all segments



Expanding
the clinical
offering



Evolution of cost base
(digitisation, automation of
workflows)

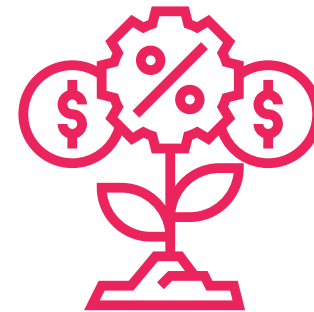


Digitised
collection and
service experience

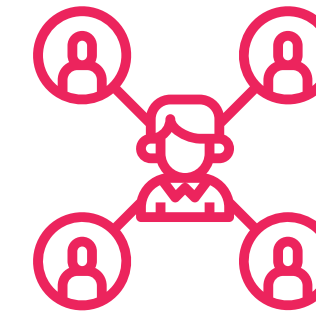
What we are doing: Imaging



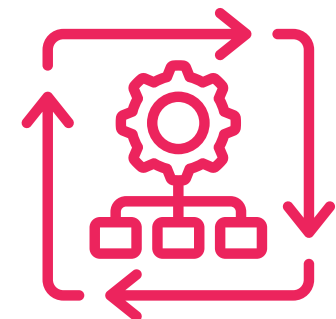
Comprehensive community sites with higher-end modalities



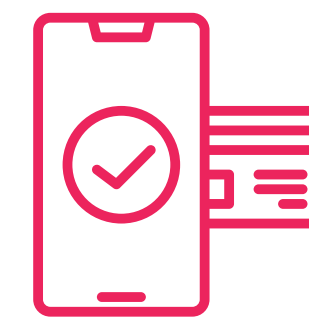
Driving higher revenue per site



Radiologist engagement and employment



Enhancing strong position in hospital segment



AI-enabled workflows & digital products

At Healius, our mission is to deliver accurate and timely diagnostic services Australia-wide



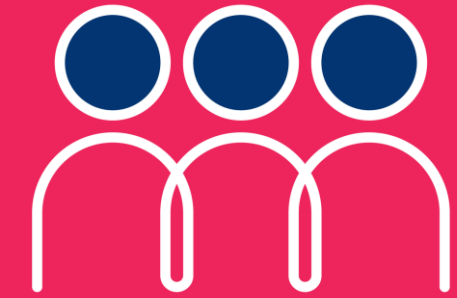
The Australian health system depends on the private provision of pathology services, which make up 90% of all pathology services.



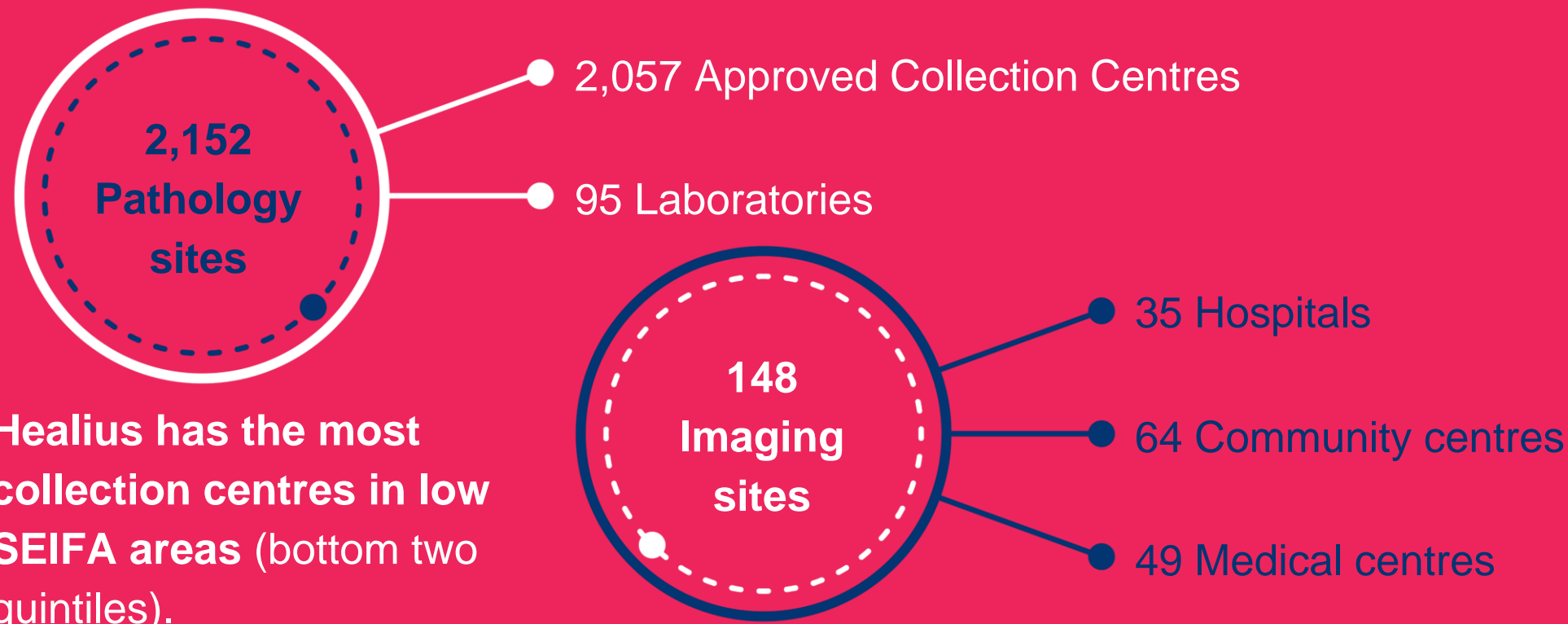
Healius Pathology provides one in every three pathology services in Australia - from large private and public hospitals to small and remote Aboriginal communities.



We are at more than 2,200 locations and are the largest provider of pathology services to remote indigenous communities in the NT and WA.



And employ more than 10,500 people



Healius has the most collection centres in low SEIFA areas (bottom two quintiles).



WA 217 sites

212 Pathology
5 Imaging

SA 40 sites

34 Pathology
6 Imaging

NT 22 sites

22 Pathology

VIC 595 sites

563 Pathology
32 Imaging

QLD 595 sites

556 Pathology
39 Imaging

TAS 24 sites

24 Pathology

NSW 771 sites

709 Pathology
62 Imaging

ACT 36 sites

32 Pathology
4 Imaging