

01 July 2024

Companies Announcement Office
Via Electronic Lodgement

LANCE PROJECT CONTINUES ON TRACK FOR 2024 PRODUCTION RESTART

KEY POINTS

- Peninsula advises that site preparations for a production restart in late 2024 are progressing on schedule at the Company's flagship Lance Uranium Project, located in Wyoming, USA
- Construction activities to expand the plant capacity and capability are progressing as scheduled
- Procurement of major process equipment is also tracking to schedule and budget
- Key workstreams to develop a new production wellfield (Mine Unit 3) also remain on track for the start of uranium recovery operations prior to year-end 2024

Peninsula Energy Limited and its wholly owned subsidiary, Strata Energy Inc. (together "**Peninsula**" or the "**Company**") (ASX:PEN, OTCQB:PENMF) are pleased to announce that plant construction and wellfield development activities at the Company's Lance Projects ("**Lance**") in Wyoming USA, are progressing on schedule and within budget. The production restart scheduled for late CY2024 will be marked by the progressive commissioning of the new process plant circuits following the initial recovery of uranium from wellfield solutions delivered to the plant.

Peninsula's Managing Director and Chief Executive Officer Mr Wayne Heili said: "*As we hit the mid-way point of 2024, we remain on track to resume uranium production operations by the end of this year. We are very pleased to confirm that our preparations are proceeding smoothly and on schedule. Procurement commitments are being made on or ahead of schedule and costs for plant construction are tracking to budget.*"

Plant Construction Update

Peninsula is currently modifying and expanding the Ross process plant and auxiliary facilities at Lance, which were originally constructed in 2015 as an alkaline In-Situ Recovery ("**ISR**") satellite plant, for an expanded production capacity using the low-pH ISR process, and to include the complete central processing plant ("**CPP**") capability of producing a finished dry yellowcake product.

Samuel Engineering, Inc and Samuel EPC, LLC (together as "**Samuel**") have been appointed to construct the additional plant facilities (see Figure 1). Samuel's construction team is on site and actively progressing the construction activities. On completion of construction, the Lance Projects will be home to a 5,000 GPM uranium recovery ion-exchange process plant with a complete capability to independently produce up to 2 million pounds per annum of dry yellowcake (U₃O₈) product.

To date, the construction efforts have been focused on preparing the building foundations. The work has progressed as scheduled and the spend rate on construction is within anticipated levels. In addition, equipment procurement activities remain on schedule with 74% of the major equipment ordered with

expected delivery dates matching the requirements of the construction schedule. Overall, equipment costs are tracking the budget projections.

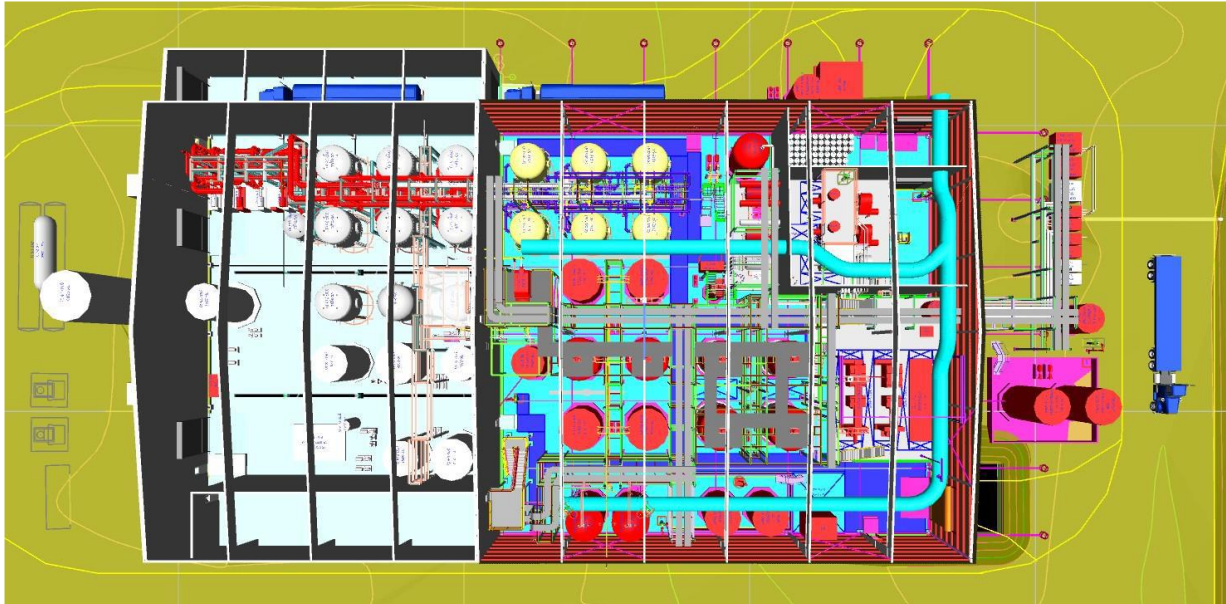


Figure 1: Design layout of the expanded Ross CPP at the Lance Projects (left hand 1/3 is existing facility; right hand 2/3 is plant expansion)



Figure 2: Crews installing forms in preparation for upcoming concrete pours at Ross CPP site

Wellfield Development Update

In addition to plant construction activities, the Company's employee and drilling contractor teams continue to advance the development of new wellfield facilities. The previously developed wellfield areas of Mine Units 1 and 2 are available for resumption of uranium recovery operations. The Company is actively developing a new wellfield production area named Mine Unit 3 ("MU-3").

The Company completed installation of the required monitoring well network for MU-3 early in 2024. A complete data package documenting the baseline water quality and hydrologic properties of the unit was submitted to the Wyoming regulatory authorities as is required for all new ISR production areas.

The Company currently has ten contract drilling rigs employed at the site to install production pattern wells (injection and production wells) in the new MU-3 area. Well installation for the entire mine unit is currently 47% complete. Installation of the production pattern wells in MU-3, Header House number 11 ("HH-11"), which will be the first module placed into production, is 85% complete.

Construction of pipelines, powerlines and wellfield infrastructure for MU-3 are advancing as scheduled. Overall, the MU-3 infrastructure installation is 70% complete at this time with no significant issues anticipated to completion.

The surface facilities for HH-11 which include the header house building, well plumbing and electrical connections, and meter runs are approximately 55% complete. HH-11 is on schedule to commence pre-conditioning operations in 3Q2024.



Figure 3: Active well installation at Mine Unit 3. Ross Plant in background.

- ENDS -

This release has been approved by Peninsula's Managing Director/CEO.

For further information, please contact:

Peninsula Energy
+61 8 9380 9920
Info@pel.net.au

or

Morrow Sodali
Michael Weir - +61 402 347 032
Cameron Gilenko - +61 466 984 953

About Peninsula Energy Limited

Peninsula Energy Limited (ASX:PEN) is one of the only ASX-listed uranium companies providing US production and direct market exposure. Its' 100% owned Lance Projects in Wyoming is due to re-commence production in December 2024 following a central processing plant capacity expansion construction project.

Lance is one of the largest, independent near-term uranium development projects in the US. With a track record of meeting delivery requirements since 2016, Peninsula has 10 years of sales contracts in place with major utilities in both the US and Europe. Once back in production, Lance will establish Peninsula as a fully independent end-to-end producer of yellowcake, well-placed to become a key supplier of uranium and play an important role in a clean energy future.

Follow us:

