



ASX:EEG

Empire Energy – The Beetaloo Basin Pioneer moving into Production



South East Asia Australia Offshore & Onshore Conference - September 2024

Corporate Snapshot



Capital Structure

Shares on issue ¹	1,017.2M
------------------------------	----------

Share price	A\$0.23
-------------	---------

Market cap	A\$234.0M
-------------------	------------------

Net (debt ²) / cash ³	~A\$45.3M
--	-----------

Enterprise value	~A\$188.7M
------------------	------------

Cash at bank³	~A\$51.6M
---------------------------------	------------------

Top Shareholders

Pangaea Resources	13.8%
-------------------	-------

Sheffield Holdings (USA)	9.0%
--------------------------	------

Elphinstone Group	8.0%
-------------------	------

Liberty Oilfield Services (USA)	4.7%
---------------------------------	------

ASX Share Price



Contingent and Prospective Resources

2C Contingent Resources	1.65 TCFe	1,927 PJe
-------------------------	-----------	-----------

2U Prospective Resources	46.6 TCFe	49,125 PJe
--------------------------	-----------	------------

1. Empire has 26.5m Share Rights on issue to members of the management team and Board, 14.3m of which have performance hurdles tied to total shareholder return or service period thresholds.

2. Total available debt of A\$7.25 million (drawn to A\$6.2 million), comprising: (i) A\$2.25 million revolving credit facility (drawn to A\$1.8 million); and (ii) A\$5 million performance bonding facility (drawn to A\$4.4 million), representing a contingent liability. Both facilities are provided by Macquarie Bank

3. As at 30 June 2024

The Beetaloo Basin Focused Gas Development Company

- The Beetaloo's Velkerri Shale is an enormous (>500 TCF) low CO₂ shale gas resource located in Northern Australia close to Asian LNG markets and existing export infrastructure
- The Beetaloo is a stacked shale play with world class geological characteristics analogous to the prolific US Marcellus Shale
- Empire holds ~3 million net effective Beetaloo acres in two contiguous landholdings
- Empire owns and operates all of its acreage with 100% working interest and ~85% net revenue interest

Empire Energy Investment Case (Cont'd)

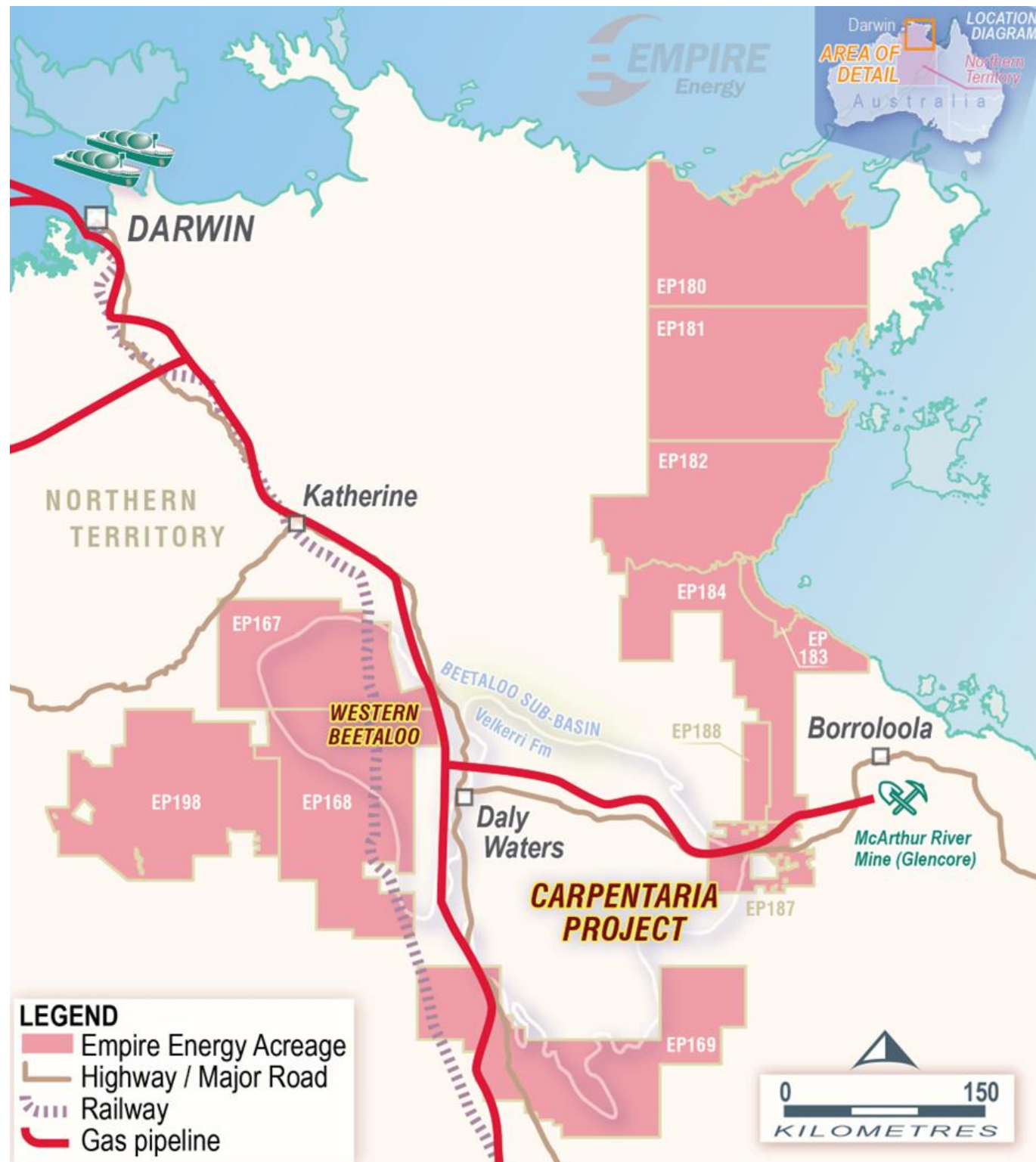


The Beetaloo Basin Focused Gas Development Company

- Empire's acreage contains >47 TCFe 2U resource and >1.6 TCF 2C resource independently assessed by NSAI with <1% CO₂
- Recent appraisal drilling by Empire and other operators has demonstrated commercial viability
- Binding gas sales agreement with investment grade customer
- Australian gas prices are over three times US, demonstrating an urgent need for increased supply
- Empire is targeting first gas sales from its Carpentaria Pilot Project in mid 2025 with scope to grow to LNG scale in years ahead

Empire's Beetaloo Basin Position

5 TCF gas pilot ready Carpentaria Project with >20 TCF Western Beetaloo resource delineated

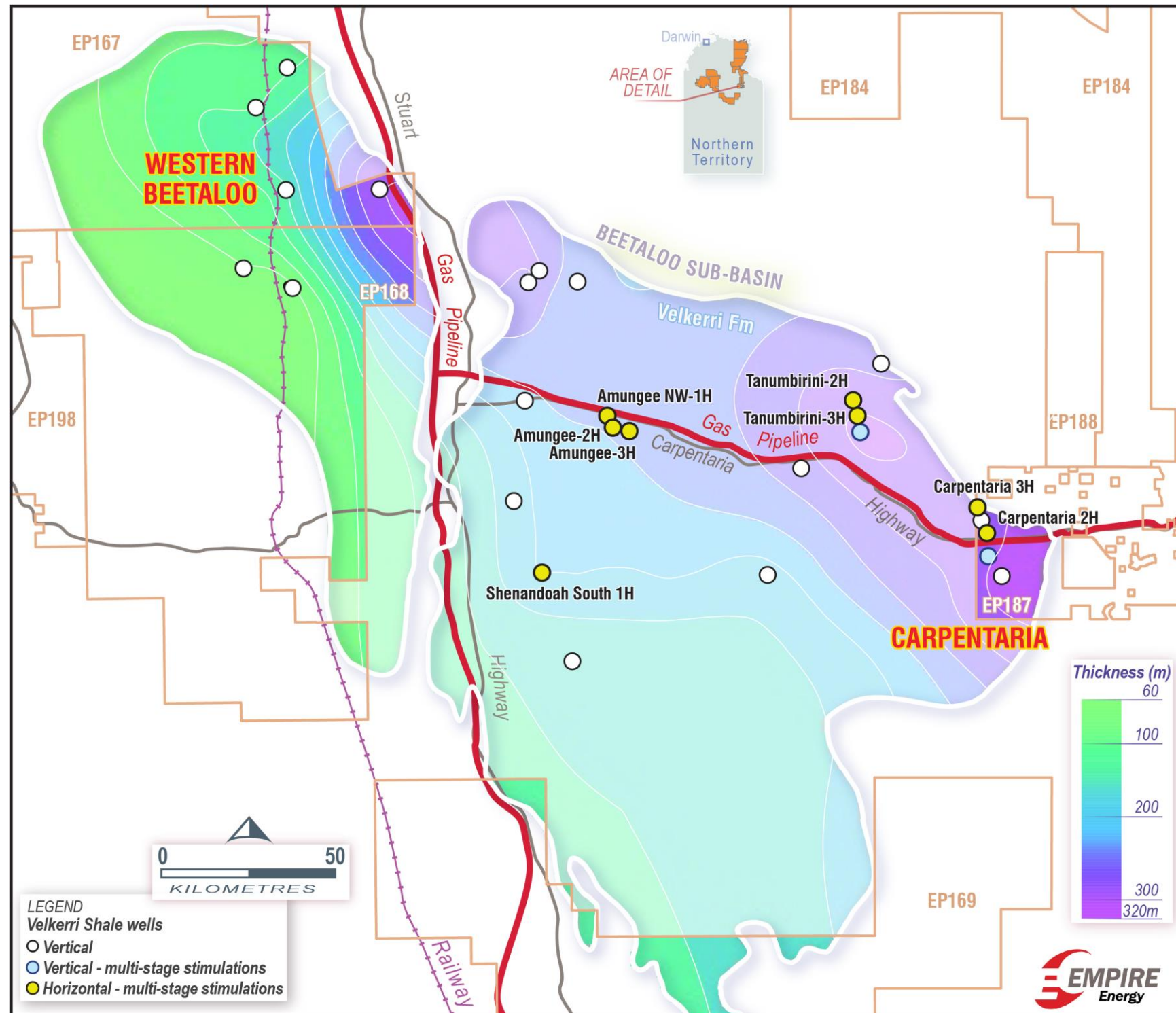


- Empire is the largest net acreage holder in the Beetaloo
- All acreage is 100% owned and operated by Empire
- Acreage benefits from high Net Revenue Interest of ~85%¹ vs typical US NRI ~75%
- Acreage is proximal to existing pipeline and road infrastructure to facilitate rapid commercialisation
- NT Government is investing in infrastructure corridors to facilitate rapid industry growth
- The Carpentaria Project (EP187) is the immediate focus (5 TCF pilot ready) targeting first production in 1H 2025 with >20 TCF Western Beetaloo Velkerri Shale resource providing material drilling inventory

1. Net revenue interest (NRI) equals Working Interest (100%) minus 10% Northern Territory Government royalty (partially offset by statutory deductions) minus Traditional Owner royalty and private royalties

Positioned Across the Thickest Section of the Stacked Play

Combined Thickness of A, Intra A/B, B and C Velkerri Shales



- Empire's Beetaloo Projects area located across the thickest section of stacked Velkerri Shale reservoirs in the basin
- Carpentaria Project has >300 m gross thickness of A, Intra A/B, B and C Shale reservoirs
- Western Beetaloo Project has the thickest stacked B and C Shale in the Beetaloo
- Empire's "stacked shale play" results in a 4x increase in the net effective acres compare to the B Shale alone

Empire has High-Quality, Low CO₂ Gas



Empire's Carpentaria gas composition meets Japanese customer specifications

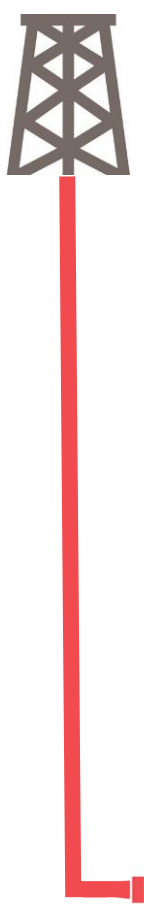
- **Gas for the Ichthys LNG is supplied from the Brewster Member and the Plover Formations which comprise the Ichthys Gas Field**
 - Production to date has mainly been from the Brewster Member, however production is expected to move towards Plover and peak in the 2030s as Brewster is depleted¹
- **Gas composition of Brewster and Plover**
 - Brewster: ~8% (CO₂), ~11% (ethane)
 - Plover: ~17% (CO₂), ~4% (ethane)²
- **Empire's low CO₂ (>1%) and high ethane (~12%) is perfectly positioned to be blended with emerging Ichthys Gas supply to:**
 - Reduce average CO₂ content (lessen need for CO₂ stripping and carbon, capture and storage)
 - Increase ethane content (attractive to Japanese energy market given high heating value required and lessen the requirement for ethane spiking of gas into plant or upon arrival in Japan)
 - Support Ichthys LNG planned expansion to three trains by 2030³

Carpentaria-2H Gas Composition - Mole %				
Component			Q3 2022 Testing	Q1-Q2 2023 Testing
C1	Methane	Hydrocarbons	83.17	82.80
C2	Ethane		11.95	12.40
C3	Propane		1.47	1.50
C4	Butane		0.30	0.30
C5+	Pentane and Higher		0.06	0.06
He	Helium	Inerts	0.16	0.12
CO2	Carbon Dioxide		0.88	0.91
	Other Inerts e.g., Nitrogen		2.01	1.91
Total Gas Composition			100.00	100.00

Sources:

1. <https://www.upstreamonline.com/field-development/inpex-steps-to-the-starting-line-for-next-ichthys-phase/2-1-972375>
2. <https://www.inpex.com.au/media/yrobfsay/draft-environmental-impact-statement-06-chapter-4-project-description.pdf>
3. <https://territorygas.nt.gov.au/Knowledge-Centre/latest-news/2022/inpex-commits-to-lng-expansion>

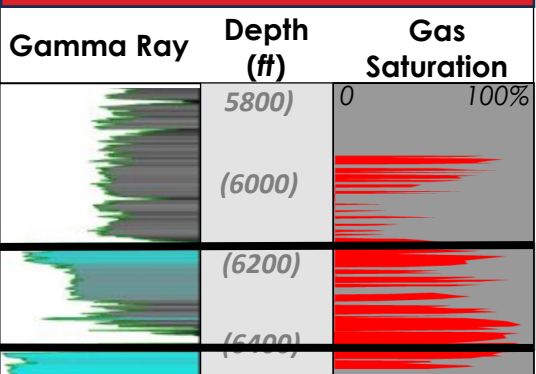
Empire's Stacked Play Improves Development Economics



Empire's four stacked shale reservoirs are 5x thicker than the prolific Marcellus

Single Reservoir

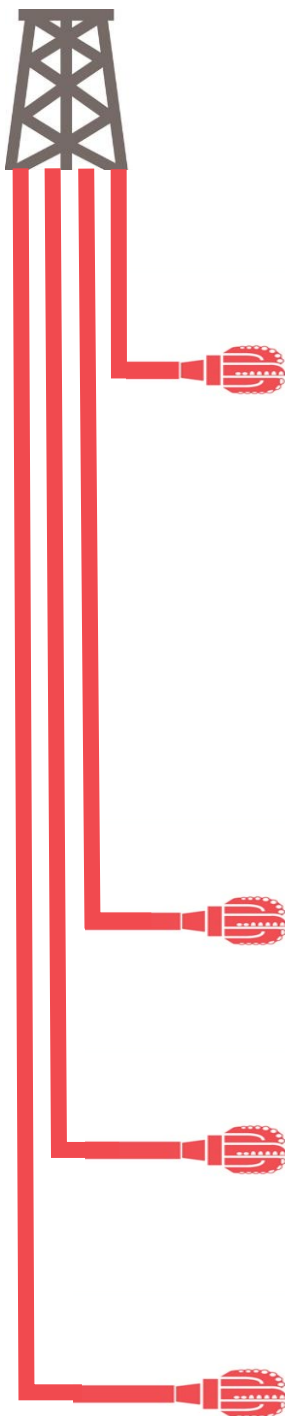
SW Marcellus Section



Total Marcellus Thickness ~60 m

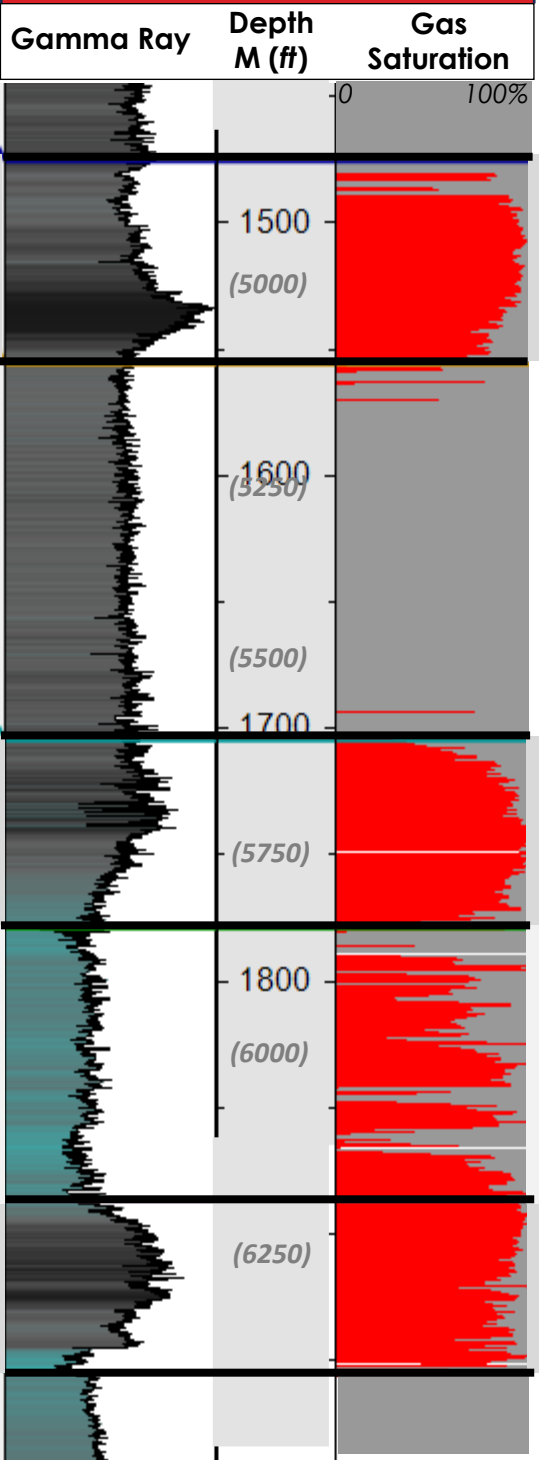
100 m
328 ft

Marcellus



Four Stacked Reservoirs

Carpentaria-4 Type Section



C Shale

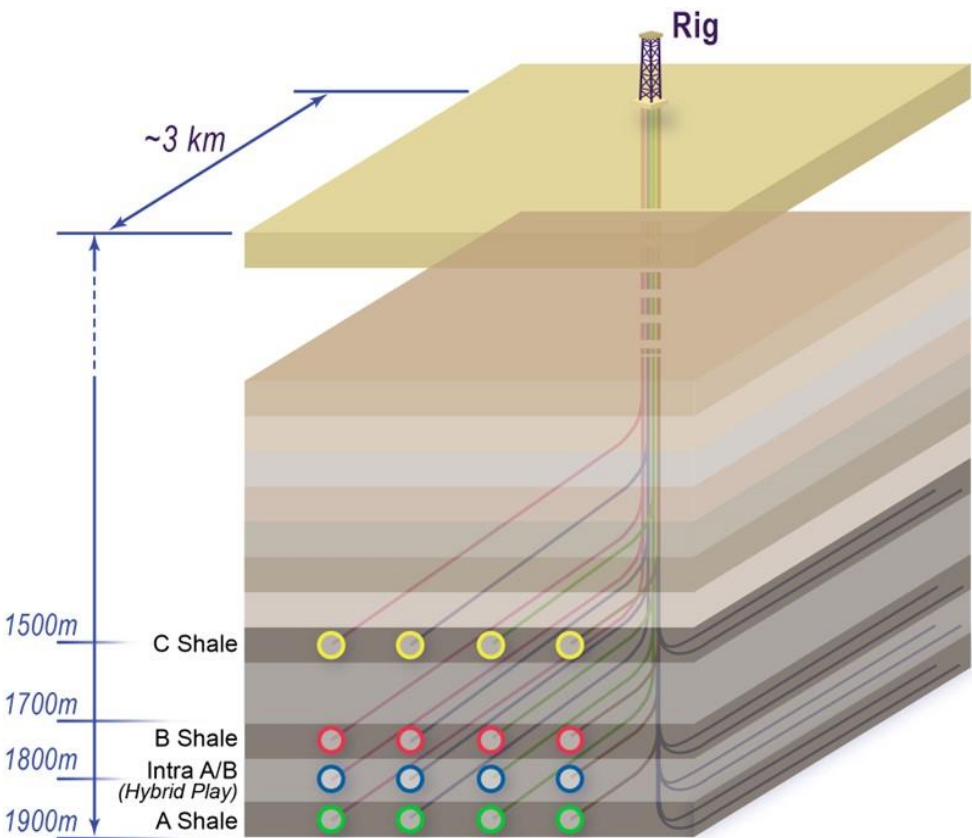
B Shale

Intra A/B (Hybrid Play)

A Shale

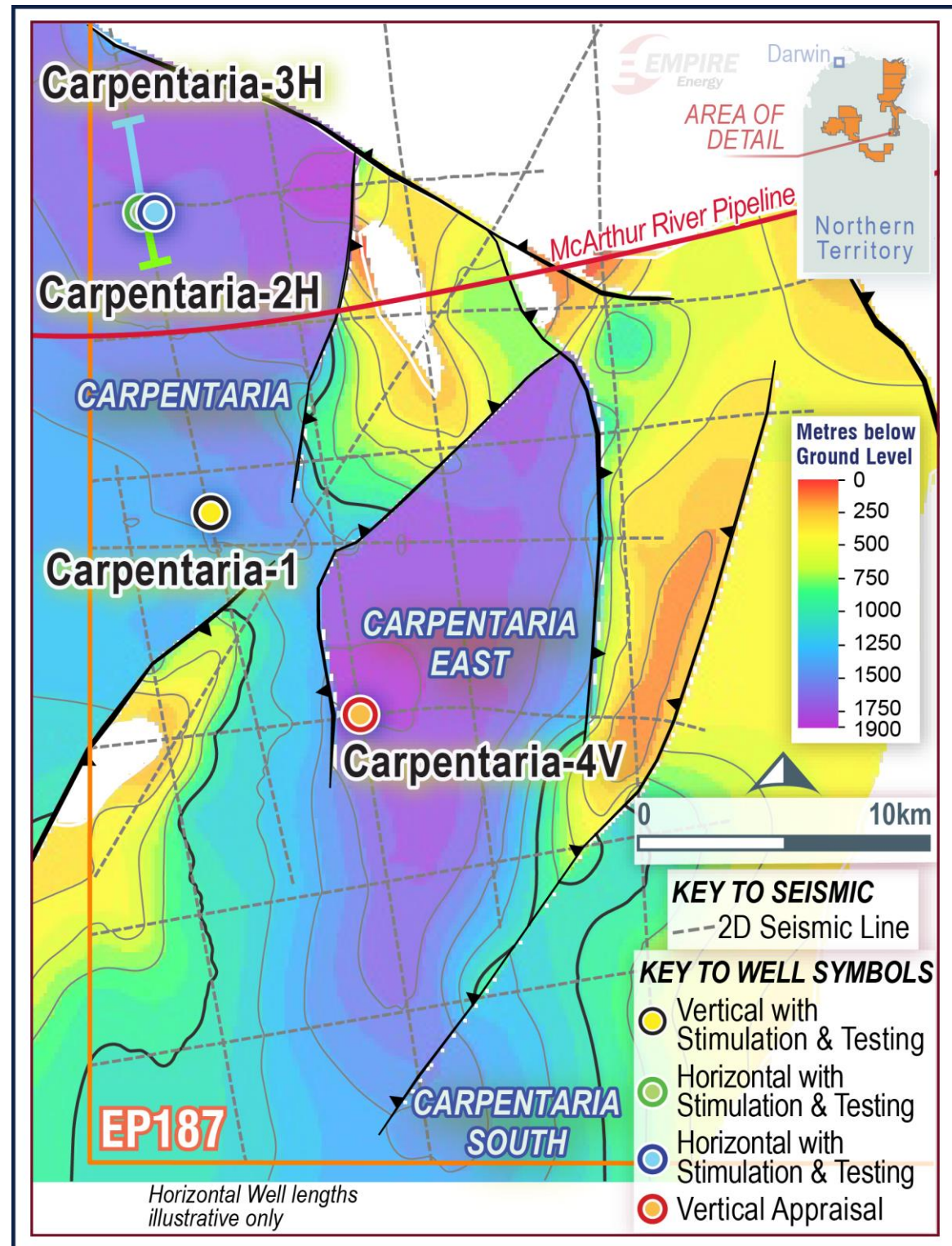
Total Net Thickness >300 m

Stacked Shale Play Development Concept



- Four stacked reservoirs allows for fewer well pads with more wells
- Option for more than 30 wells per pad
- Leads to improved development efficiencies and economics
- Akin to Permian Basin style development

Appraisal Activity has Delivered the Carpentaria Project



Cost-Effective Approach to Appraisal

- Seismic, multi-stage vertical and horizontal flow tests have delineated a large stacked play
- Four zones with a net effective area of >460,000 acres (~1,900 km²)
- ~A\$90m (~US\$60m) invested has delivered >1,739 PJ (~1.5 TCF)

Commercial rates confirmed

- Two horizontal wells stimulated
- Excellent flow rates – normalised rate of 3.5 TJ/d per 1,000 m
- High calorific value gas (1.15 TJ per MMCF)

Gas resource and productivity now established to move into pilot production

- More than 200 drilling locations delineated in the B Shale
- ~600 additional locations across A, Intra A/B and C Shales

The Carpentaria Pilot Project

Empire is targeting first production from Carpentaria in mid 2025

The Carpentaria Pilot Project aims to:

- Produce sales gas from existing Carpentaria-2H and Carpentaria-3H test wells, C-5H and future pilot development wells
- Process gas through Empire's Carpentaria Gas Plant which has a design capacity of 42 TJ/d (40 mmcf/d)
- Utilise existing McArthur River Gas Pipeline capacity to produce up to 25 TJ /d (23 mmcf/d) in the pilot phase
 - **"T-piece" connection has been inserted into the pipeline to facilitate Empire's access to the line for gas sales**
- Deliver both cash flow and additional resource definition for large-scale development



Carpentaria Gas Plant in operation immediately prior to acquisition



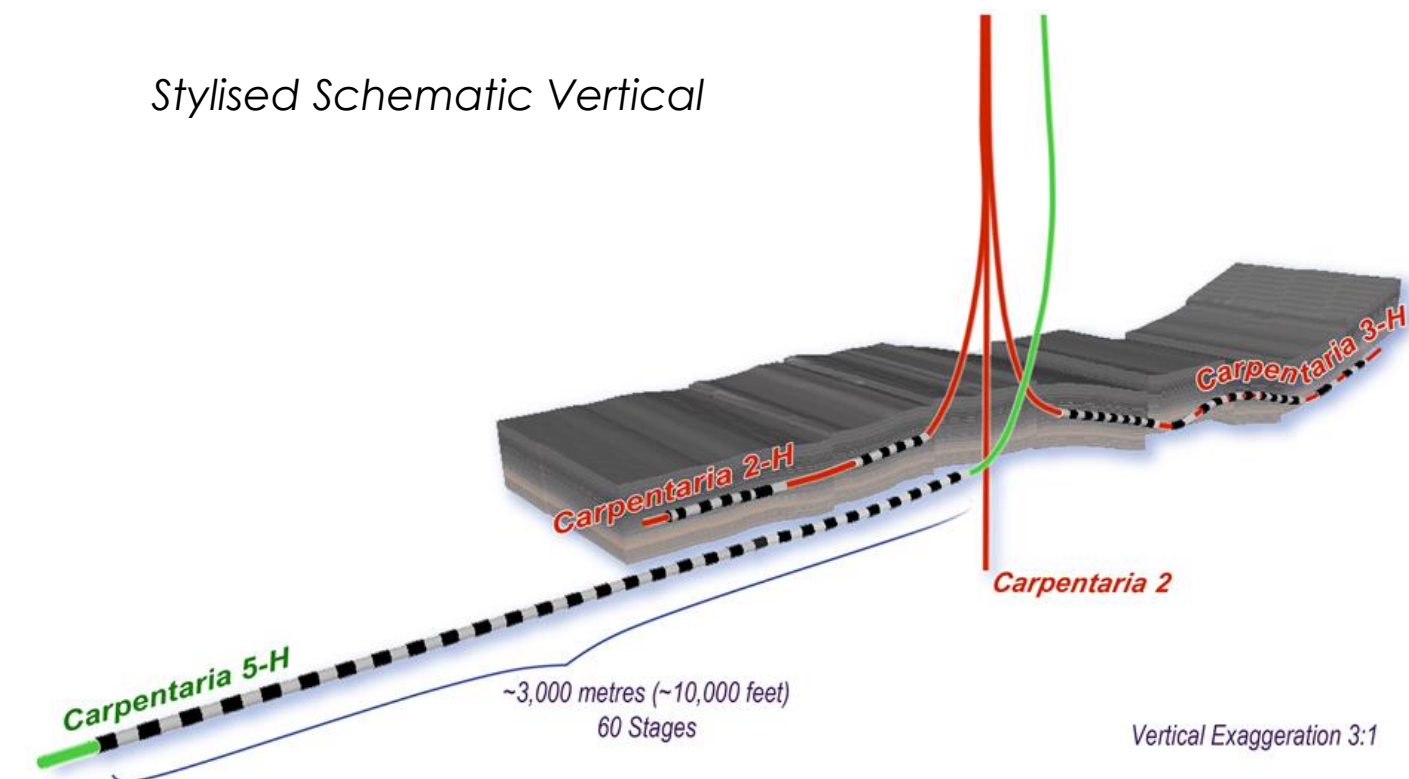
Carpentaria 2H and 3H well pad from above



Carpentaria-2H flare

C-5H will be the longest horizontal shale well, and the largest frack job executed in Australia

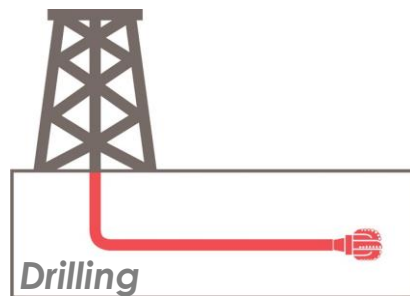
- **Empire is fully funded for C-5H and will be drilled in H2 2024**
- C-5H will be drilled from the same well pad as Carpentaria-2H ("C-2H") and Carpentaria-3H ("C-3H") in 5 ½" casing
- C-5H will target:
 - ~3,000 metres of horizontal section
 - 60 fracture stimulation stages
- C-5H will utilise the best practise completion to optimise productivity. Empire has engaged specialist US shale experts to refine design and ensure learnings from previous wells are captured in C-5H
- The goals of C-5H are:
 - Execute a development scale well for the Carpentaria Pilot Project;
 - Optimise fracture stimulation design to achieve higher productivity;
 - Conduct a long-term production test to develop a Carpentaria type curve for long laterals for development planning, and
 - Commence gas sales from the Beetaloo Basin
- Ensign and Halliburton contracted to drill and fracture stimulate C-5H



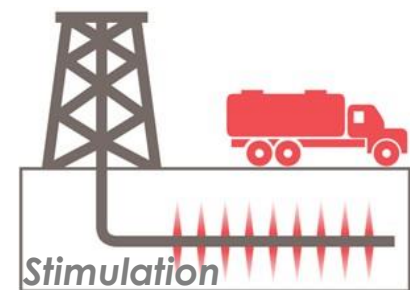
A Platform for Increased Productivity

Basin-specific drilling and completion methodologies are being developed to drive increasing flow rates and EUR consistent with the lived experience of the US Shale Revolution

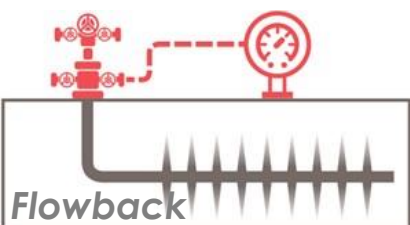
Drilled Appraisal Wells



Demonstrated Execution
> 2.6 km horizontal well drilled successfully with 4 ½" casing



Trialled multiple techniques
*61 stimulation stages successfully executed without screenout
Multiple stimulation fluids trialled*



Lift, Choke & Soak
*No artificial lift required during flowback
Trialled choke management and soaking*

Future Pilot / Development Wells

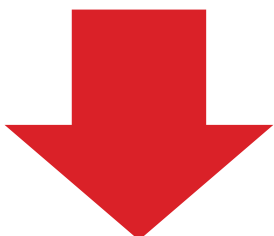
- Drilling 3km horizontal wells
- Increase casing size to 5 ½"
- Completion focus for landing zone, geosteering and cementing

- Higher horsepower and doubling pump rates to >100 barrels per minute
- One optimised strategy per well





- Post stimulation well cleanup timing and technique ("soak")
- Managed choke scheme for long term productivity


EUR

Well Cost



Pathway to Full-Field Development of the Carpentaria Project

Year	2024	2025	2026	2028+
				
KEY ACTIVITIES	<ul style="list-style-type: none"> Drill, fracture stimulate and connect Carpentaria-5H (3,000m lateral, ~60 stages) and existing well inventory (C-2H and C-3H) 	<ul style="list-style-type: none"> Construct Carpentaria Pilot Project midstream facilities and gas gathering network First gas deliveries from the Carpentaria Pilot Project Planning and engineering work for full-field development 	<ul style="list-style-type: none"> Drill, fracture stimulate and connect a further ~3 wells (3,000m lateral, ~60 stages) to grow production to ~25TJ/d APA to commence work on pipeline and gas processing infrastructure for full-field development 	<ul style="list-style-type: none"> 'Factory' drilling Grow production up ~1 BCF/d to supply east coast and LNG markets All three target gas markets (NT, east coast and LNG) are structurally short of gas

Carpentaria Pilot Project

Carpentaria Gas Project

Empire is a Responsible Operator with ESG at the Core of its Strategy



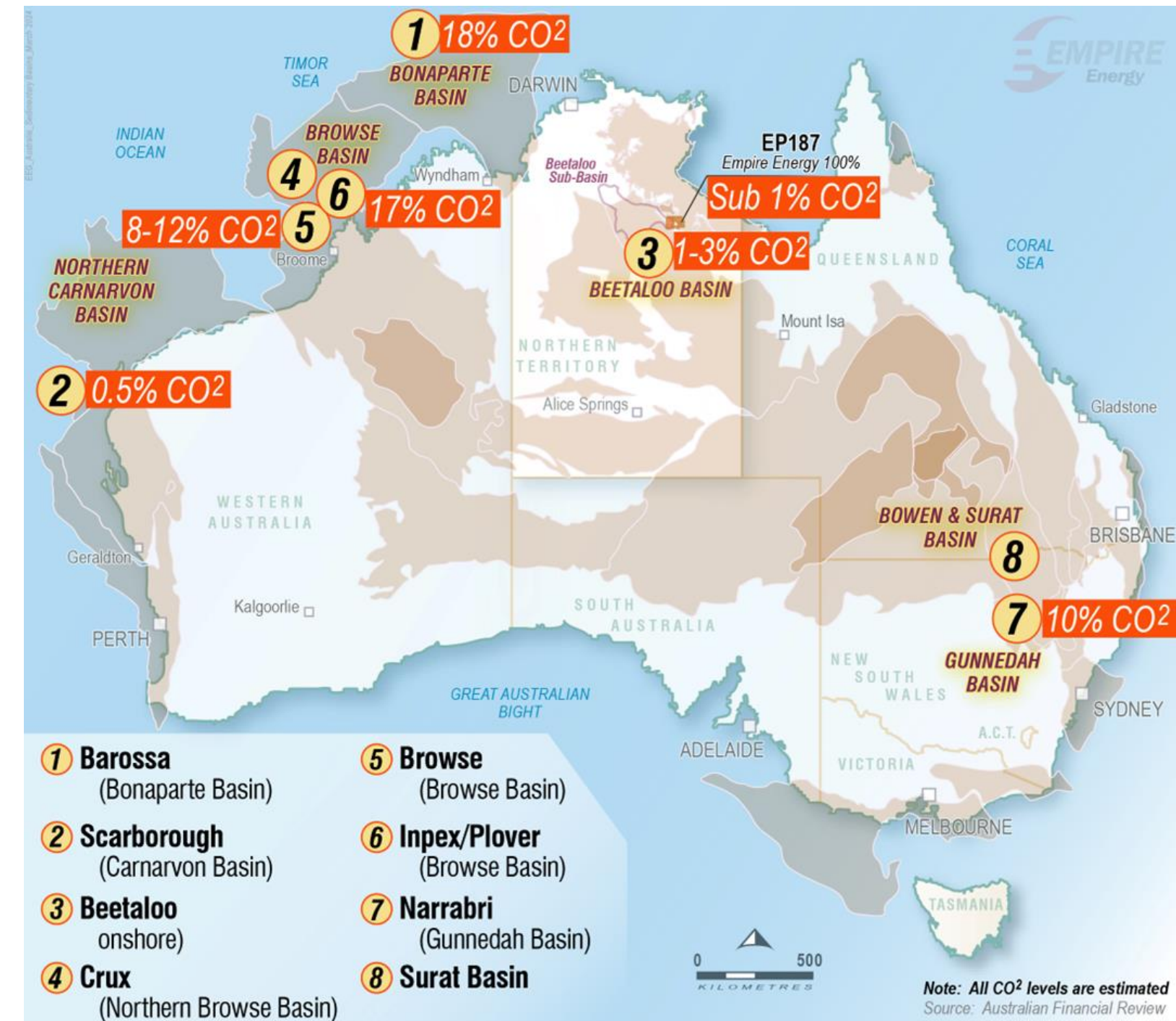
Empire's Beetaloo gas contains sub 1% CO₂ in the reservoir

Environment

- **Carpentaria CO₂ reservoir levels are extremely low compared to other new supply options**
- Empire will offset all Scope 1 emissions with minimal impact on revenues
 - ~2% of gross revenue (at A\$10/GJ gas price) for Carpentaria's full field economic life at the current Australian Carbon Credit Unit ("ACCU") price of ~A\$35 per tonne of CO₂e¹
- Stacked shale play minimises surface footprint

Social and Governance

- **Empire maintains strong relationships with Traditional Owners (TOs) and pastoralists on whose land it operates with full consent**
 - ~30 on-county meetings held with TOs to date
 - Northern Land Council exploration payments paid for the benefit of TOs and thousands of hours of employment for TOs to date
 - Land access agreements signed with pastoralists



1. Estimates have been prepared by Empire and independently reviewed by HRL Technology Group Pty Limited (<https://www.hrlt.com.au>)

Government Supporting the Beetaloo



NT Government has primary responsibility for regulation of the Beetaloo Basin Federal Labor Government is supportive of Beetaloo development

NT Government supports the Development of the Onshore Gas Industry

- All regulatory frameworks have been implemented to allow for the award of Production Licenses for the Beetaloo Basin
- The NT Government estimates that developing the Beetaloo Basin will create thousands of work opportunities for Territorians and boost the economy by \$17 billion¹

Australia's Future Gas Strategy

- During May 2024, the Australian Government released a medium and long-term strategy that establishes the role gas will play in the transition to net zero by 2050
- Gas is crucial for “A Future Made in Australia” as it supports manufacturing, food processing and refining of critical minerals which will help Australia and the world to lower emissions
- Gas supplies 27% of Australia’s energy needs and represents 14% of Australia’s export income²

1. <https://territorystories.nt.gov.au/10070/941083>

2. The CLP's Plan to Rebuild the Territory

3. <https://www.minister.industry.gov.au/ministers/king/media-releases/australias-future-gas-strategy>

The Hon Lia Finocchiaro (Chief Minister of the Northern Territory)

“The CLP have always stood up for, and supported the Territory’s gas industry, and this industry will proceed with certainty under a CLP government.

We have this incredible resource right here and thousands of Territory jobs could be created over the next 20 years.

Gas is the cleaner and cheaper pathway to renewables. The Territory’s gas can provide the solution to the East Coast power shortage and provide economic benefit to Territorians.”²

The Hon Madeleine King MP (Minister for Resources and Minister for Northern Australia)

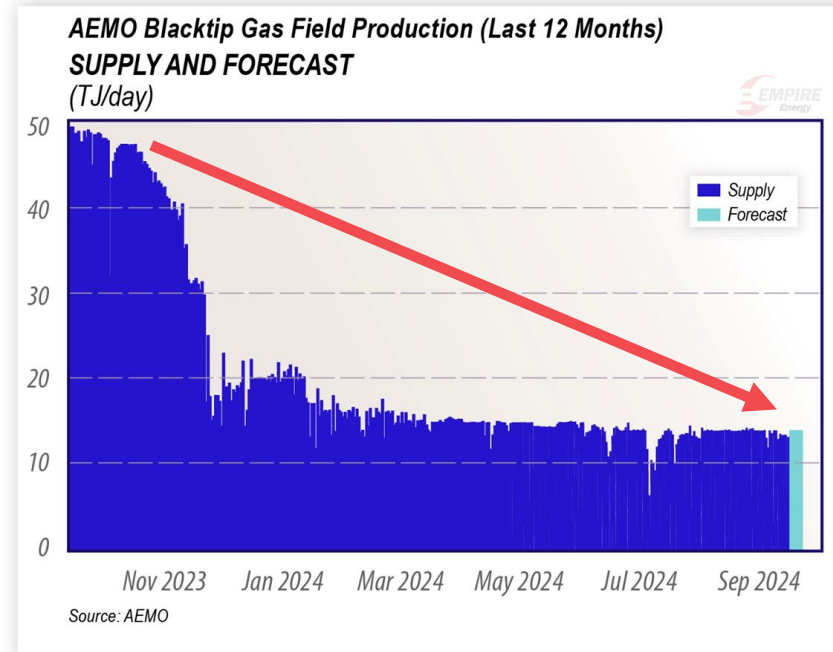
“The (Future Gas) Strategy makes it clear that gas will remain an important source of energy through to 2050 and beyond, and its uses will change as we improve industrial energy efficiency, firm renewables, and reduce emissions”

“But it is clear we will need continued exploration, investment and development in the sector to support the path to net zero for Australia and for our export partners, and to avoid a shortfall in gas supplies.”³

Australia, Asia and the World Need New Gas Supply

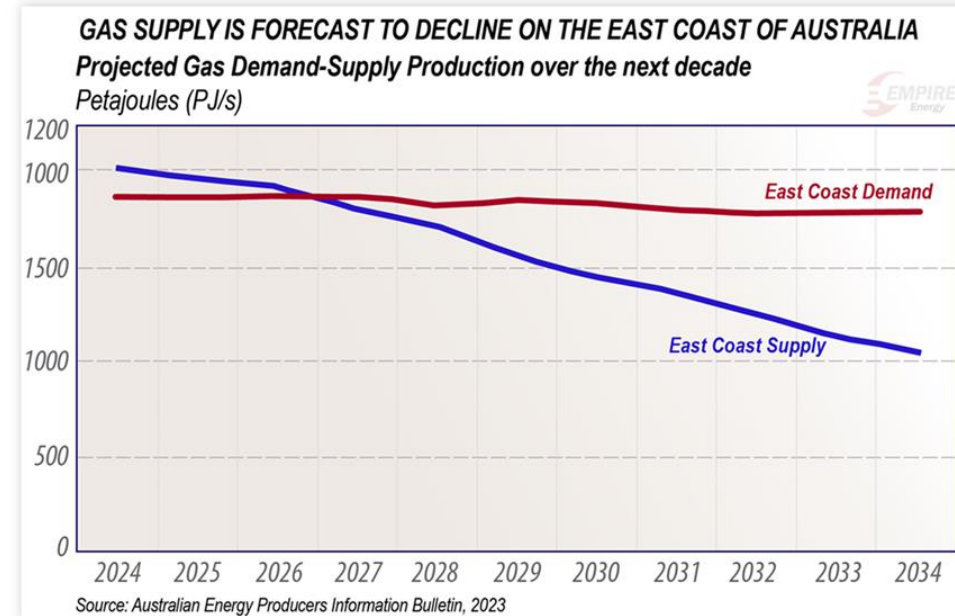
Empire's strategy is to supply domestic and international gas markets

Phase 1: Northern Australian Gas Market



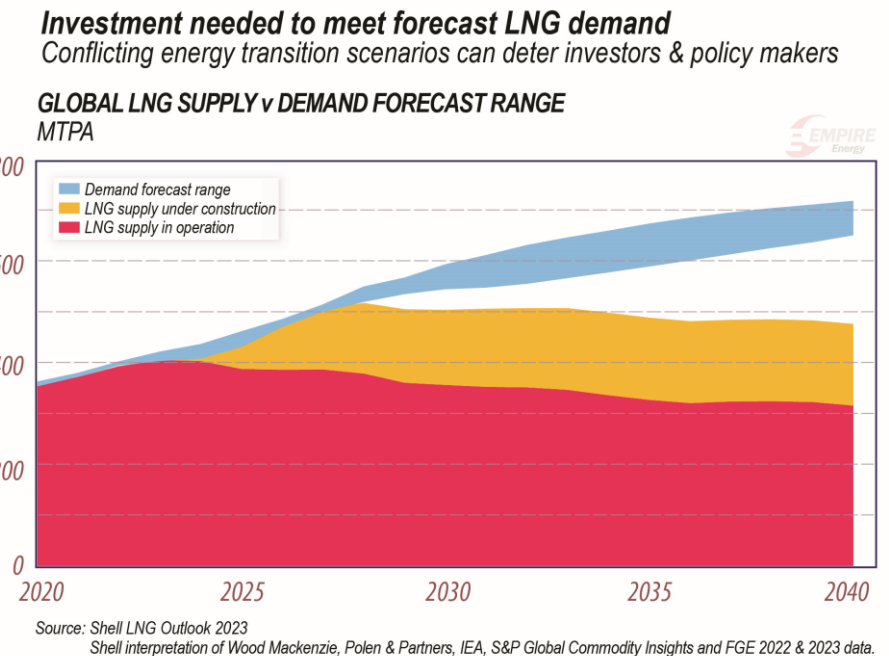
- **Blacktip Gas Field:** GSA to 2034 of 104TJ/d vs. 15TJ/d production
- NT needing to buy emergency gas from Darwin LNG terminals
- **Northern Gas Pipeline (to QLD):** currently closed¹

Phase 2/3: Australian East Coast Gas Market



- Australian east coast domestic market is structurally short of gas with a supply vs. demand deficit emerging in 2027
- Existing supply sources such as the Gippsland Basin are in decline. QLD CSG largely developed and contracted for LNG to Asia

Phase 2/3: Global LNG Market



- **Empire is strategically located between Darwin and Gladstone LNG export infrastructure**
- LNG demand to reach around 625-685 million tonnes a year in 2040 (2023: 404mt) and outstrip supply by 2027²

1. <https://www.aemo.com.au/energy-systems/gas/gas-bulletin-board-gbb/data-gbb/data-dashboard>

2. Shell LNG Outlook 2024

10 Year Binding Gas Sales Agreement with NT Government



Foundation gas sales agreement with investment grade customer underwrites pilot economics

- **Buyer:** Northern Territory Government (Aa3, stable)
- **Volume / Term:**
 - up to 25 TJ/d for 10 years (~75PJ total, net to Empire)
 - an additional 10 TJ/d+ for up to 10 years at the option of the Buyer to be made available by Empire if production levels from the Carpentaria project exceed 100 TJ/d
- **Pricing:** ex-field take-or-pay basis at competitive market gas prices, escalating at 100% of the Australian CPI
- **Delivery:** McArthur River Gas pipeline ("MRP")
 - A T-piece connection has already been installed into the MRP at the proposed location of the Carpentaria Gas Plant
- **Conditions Precedent:** customary conditions for an agreement of this nature including Empire reaching FID for the Carpentaria Pilot Project and receipt of regulatory approvals which are well advanced

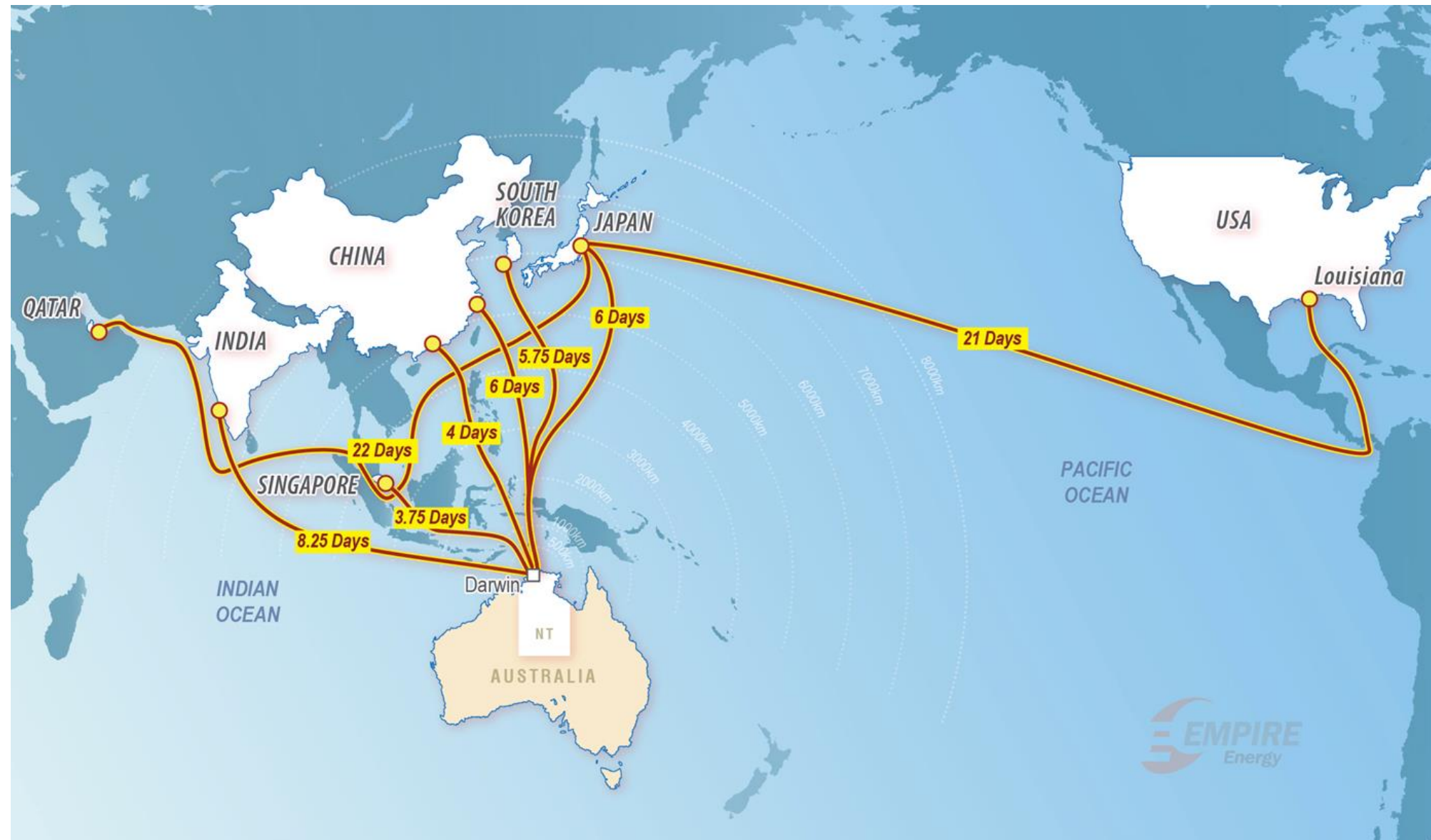


Carpentaria Gas Plant

The Beetaloo is Strategically Located Near Asian Markets

Australian domestic gas and Asian LNG indices trade at multiples of US Henry Hub prices

LNG Tanker Sailing Days to Tokyo Bay¹



- **Exposure to Pacific Basin gas prices**
 - >US\$10 / MMBtu premium to Henry Hub
- **Japan/Korea Marker (Platts) LNG price**
 - US\$13.67 / MMBtu (as at 16 September 2024)
 - US\$12.50 / MMBtu (avg. previous 12 months)
 - US\$22.00 / MMBtu (avg. previous 3 years)
- **Henry Hub price**
 - US\$2.27 / MMBtu (as at 16 September 2024)
- **Wallumbilla (Main East Coast Australian Index)**
 - A\$12.00 / MMBtu (as at 16 September 2024)
 - US\$8.04 / MMBtu (as at 16 September 2024)

Source:

1. BloombergNEF, Tamboran Resources

The Empire Value Proposition

Phase 1 Carpentaria Pilot Project



- **Up to 25 TJ/d (24 mmcf/d)**
- **Targeting first revenue in 2025**
- Mature resource definition and type curves for larger scale development
- **Gas plant secured**
- **Binding gas sales agreement with investment grade customer**

Phase 2 Domestic Gas Project



- **~200TJ/d (~190 mmcf/d) to supply Australian east coast**
- Carpentaria 'stacked play' provides additional drilling inventory across ~460,000 net effective acres

Phase 3 Full-Field Development - LNG



- **~1 BCF per day to supply LNG export markets**
- ~2.6 million net effective acres of 'running room' across Western Beetaloo

Near-term Growth Catalysts



Empire is fully funded for the drilling and fracture stimulation of C-5H

Key Near-term Catalysts

- 1. Carry out C-5H drilling, stimulation and well testing**
- 2. Obtain Regulatory and Indigenous Approvals for sale of test gas under Beneficial Use of Test Gas law**
- 3. Secure financing for surface facilities (debt advisors appointed)**
- 4. Construct surface facilities**
- 5. Commence pilot project gas sales**



<https://empireenergygroup.net/>

ASX:EEG

Alex Underwood
Managing Director
info@empiregp.net
+612 9251 1846

Appendix 1: A Globally Significant Resource Position



Contingent Resources (Gas)			Contingent Resources (Liquids)			Prospective Resources (Gas)			Prospective Resources (Liquids)		
Low Estimate (1C)	Best Estimate (2C)	High Estimate (3C)	Low Estimate (1C)	Best Estimate (2C)	High Estimate (3C)	Low Estimate (1U)	Best Estimate (2U)	High Estimate (3U)	Low Estimate (1U)	Best Estimate (2U)	High Estimate (3U)
PJ	PJ	PJ	mmbbls	mmbbls	mmbbls	PJ	PJ	PJ	mmbbls	mmbbls	mmbbls
365.2	1,906.1	3,946.1	0.9	3.5	14.1	12,380	44,540	145,523	164	764	3,509

Empire 2C Contingent Resource of **1,906 PJ (1,625 BCF gas)** and **3.5 MMBBLs liquids**

Empire P(50) Prospective Resource of **44,541 PJ (42 TCF gas)** and **764 MMBBLs liquids**

Appendix 2: Empire's Board of Directors



Peter Cleary

Chairman

- Distinguished 29-year career representing Santos, the North West Shelf Venturers and BP in Asia. His executive career was in LNG, pipeline gas and chemicals operations
- Member of the Executive Committee of the Australia Japan Business Co-operation Committee and the Australia Korea Business Council



Alex Underwood

Managing Director

- Associate Director Energy Markets Division of Macquarie Bank Limited (Sydney and Singapore) for 10 years
- Director Natural Resources Division of Commonwealth Bank of Australia (Singapore)
- Financial Analyst BHP Billiton Petroleum (Perth)
- Experience investing debt and equity in the upstream oil and gas sector and identification of value creation opportunities for upstream oil and gas development / production assets
- Deep understanding as an institutional investor of the key drivers of shale gas value generation



Karen Green

Non-Executive Director

- Over 30 years' experience in Chartered Accountancy, predominantly in business advisory services and has lived and worked in Darwin since 1991
- Managing Partner for the Northern Territory and leader for Advisory Services for Deloitte in the Northern Territory
- 5th female ever to enter the Deloitte Australian Partnership
- Currently on the Northern Territory Investment Advisory Group and on the Northern Territory National Security Advisory Panel.
- Non-Executive Director of Airport Development Group Pty Ltd (the long-term lease holder of Darwin International Airport, Alice Springs Airport and Tennant Creek Airport)



Louis Rozman

Non-Executive Director

- Former Managing Director of CH4 Gas which merged with Arrow Energy and later acquired by PetroChina and Shell
- Founding principal of Pacific Road Capital, a resources investing manager of private equity funds
- Former Chief Operating Officer of AurionGold Limited
- Chairman of the VALMIN Code Committee for the AusIMM and Australian Institute of Geoscientists



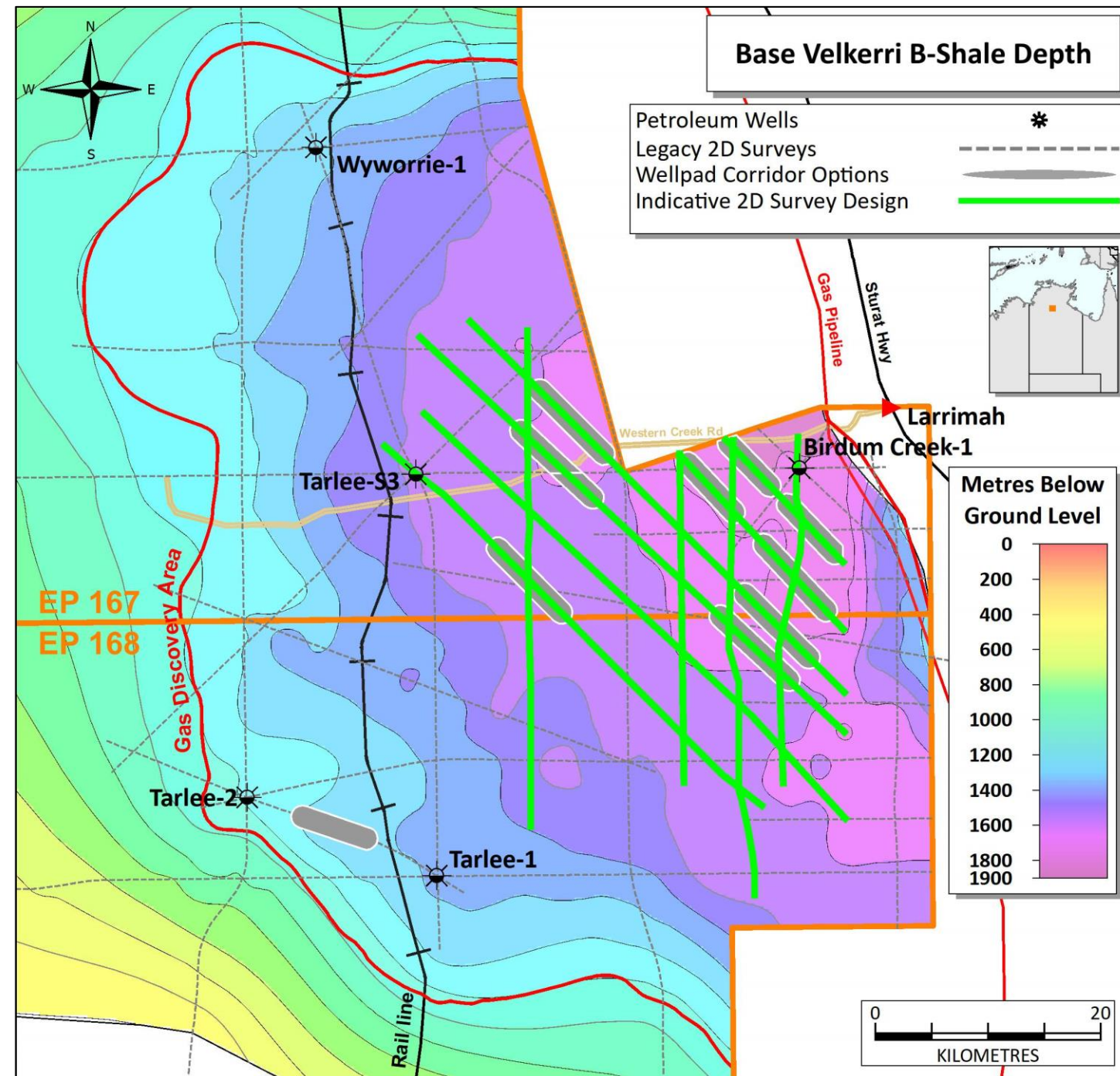
Prof. John Warburton

Non-Executive Director

- Highly regarded petroleum geoscientist experienced in big fields
- 30 years technical & leadership experience in leading E&P companies including BP, LASMO-Eni and Oil Search
- Previously Chief of Geoscience & Exploration Excellence for Oil Search

Appendix 3: Large Western Beetaloo Resource

Comprehensive well and seismic datasets in the Western Beetaloo Project have defined a large extensive resource strategically located on existing infrastructure



EP 167 and EP 168 100% EEG

Resource has been delineated

- Delineated ~2.6 million net effective acres
- 100+ TCF OGIP Discovery (B Shale only)
- Less than 1% CO₂
- Thickest B and C Shale in Beetaloo
- **Same rock as Carpentaria Project – Stacked Play**
- Huge running room

Forward program

- Up to 380 km in-fill 2D seismic oriented for future Hz wells
- Multiple locations cleared for drilling and flow testing

Appendix 4: Conversion Table

<u>Exchange Rate</u>	
US\$: A\$	0.65

<u>Energy</u>	
MCF : GJ	1.06
MMCF : TJ	1.06
BCF : PJ	1.06
GJ : TJ	1,000
GJ : PJ	1,000,000

<u>Distance</u>	
Feet : Metres	3.28

Disclaimer



This presentation has been prepared by Empire Energy Group Limited (“Empire” or the “Company”). The information in this presentation is information of a general nature and is subject to change without notice. The information in this presentation does not purport to be complete, nor does it contain all of the information which would be required in a prospectus prepared in accordance with the requirements of the Corporations Act 2001 (Cth). It contains information in a summary form only and should be read in conjunction with Empire’s other periodic disclosure announcements to the ASX available at www.asx.com.au.

An investment in Empire shares is subject to known and unknown risks, many of which are beyond the ability of Empire to control or predict. These risks may include, for example, movements in oil and gas prices, a failure to acquire some or all of the targeted acreage, risks associated with the development and operation of the acreage, exchange rate fluctuations, an inability to obtain funding on acceptable terms or at all, loss of key personnel, an inability to obtain appropriate licences, permits and or/other approvals, inaccuracies in resource estimates, share market risks and changes in general economic conditions. Such risks may affect actual and future results of Empire and its shares.

This presentation contains statements, opinions, projections, forecasts, and other material (“forward looking statements”). These statements can be identified by the use of words like ‘anticipate’, ‘believe’, ‘intend’, ‘estimate’, ‘expect’, ‘may’, ‘plan’, ‘project’, ‘forecast’, ‘will’, ‘should’, ‘could’, ‘seek’ and other similar expressions. Forward looking statements may be based on assumptions which may or may not prove to be correct. None of Empire, its respective officers, employees, agents, advisers or any other person named in this presentation makes any representation as to the accuracy or likelihood of fulfilment of the forward looking statements or any of the assumptions upon which they are based and disclaim any obligation or undertaking to revise any forward looking statement, whether as a result of new information, future event or otherwise.

Maps and diagrams contained in this presentation are provided to assist with the identification and description of Empire’s lease holdings and Empire’s intended targets and potential exploration areas within those leases. The maps and diagrams may not be drawn to scale and Empire’s intended targets and exploration areas may change in the future.

All financial information is in Australian dollars unless stated otherwise.

The information contained in this presentation does not take into account the investment objectives, financial situation or particular needs of any recipient and is not financial product advice. Before making an investment decision, recipients of this presentation should consider their own needs and situation and, if necessary, seek independent professional advice.

To the maximum extent permitted by law, Empire and its respective officers, employees, agents and advisers give no warranty, representation or guarantee as to the accuracy, completeness or reliability of the information contained in this presentation. Further, none of Empire nor its respective officers, employees, agents or advisers accept, to the extent permitted by law, responsibility for any loss, claim, damages, costs or expenses arising out of, or in connection with, the information contained in this presentation. Any recipient of this presentation should independently satisfy themselves as to the accuracy of all information contained herein.