

Environmental studies and surveys commence on expansion areas

Frontier Energy Limited (ASX: FHE; OTCQB: FRHYF) (**Frontier** or the **Company**) is pleased to announce the commencement of environmental surveys focused on vegetation and flora and fauna with high conservation value over 565 hectares (**Expansion Area**) of its Waroona Renewable Energy Project (**Project**).

This work is critical for the future expansion of the Project, with an internal assessment on the most appropriate size and configuration for a Stage Two expansion expected to commence shortly.

HIGHLIGHTS

- **The Company has commenced key environmental studies relating to biodiversity on the Expansion Areas. This work is essential for future expansion and will assist in identifying the most appropriate location for the Stage Two expansion**
 - *The studies comprise surveys of vegetation and flora and fauna with high conservation value across the Expansion Area*
- **The Expansion Area covers 565ha. This land is all owned or controlled by the Company (total land area including Stage One is 868ha). The Expansion Area is zoned as General Farming similar to the Stage One area, and having been largely cleared**
- **Undertaking environment assessments early in the planning process enables Frontier to identify if there are species or areas of high conservation value within the project area and enables the project design to minimise or avoid impacts to these areas**
- **The results of the biodiversity assessment provide valuable input into the Project design process and approvals strategy. The results from this study are expected to be available late 2024**
- **The Company will shortly commence an internal assessment on the most appropriate size and configuration for a Stage Two Expansion**

Frontier CEO, Adam Kiley commented: "As a renewable energy company, ensuring the development of our Project is undertaken in accordance with the highest environmental standards is critically important.

Given the majority of the Expansion Area has been largely cleared for farming, it is highly suitable for renewable energy development and expansion of the Project. There are however a limited number of small pockets of vegetation that we intend to exclude from any clearing activities and expand for conservation purposes.

The Company will shortly commence an internal assessment of the most appropriate size and configuration for the Stage Two expansion. The results of this environmental work however will support the process to identify the most suitable location."

Biodiversity Assessment Commences on Expansion Area

Understanding the natural environment is essential to inform decision making on future expansions of the Project. Undertaking environmental assessments early in the planning process enables the Company to identify any species or areas of high conservation value within the Expansion Area that need to be protected. The results of the biodiversity assessment will provide valuable input into the project design process and approvals strategy.

The land area being surveyed is approximately 565 ha, which is either owned or controlled by the Company. The survey area is currently zoned as 'general farming' and having been heavily cleared, is currently used for grazing sheep and / or cattle. Patches of native vegetation or isolated trees remain across some sections of the properties (Figure 1).



Figure 1: Aerial photo of the northeastern property in Figure 2, located directly south of Stage One

Frontier has been proactive in its approach to environmental management and commissioned its first environmental assessment in 2020. This involved engaging Biota Environmental Services (**Biota**) to conduct an environmental assessment over Frontier's original land holding, which is located on the western side of the area shown in Figure 2 (previously known as the Bristol Springs Project). This was followed by an additional flora and vegetation survey and targeted Black Cockatoo survey in 2022.

No conservation significant flora species, or vegetation that represented a priority or threatened ecological community were recorded.

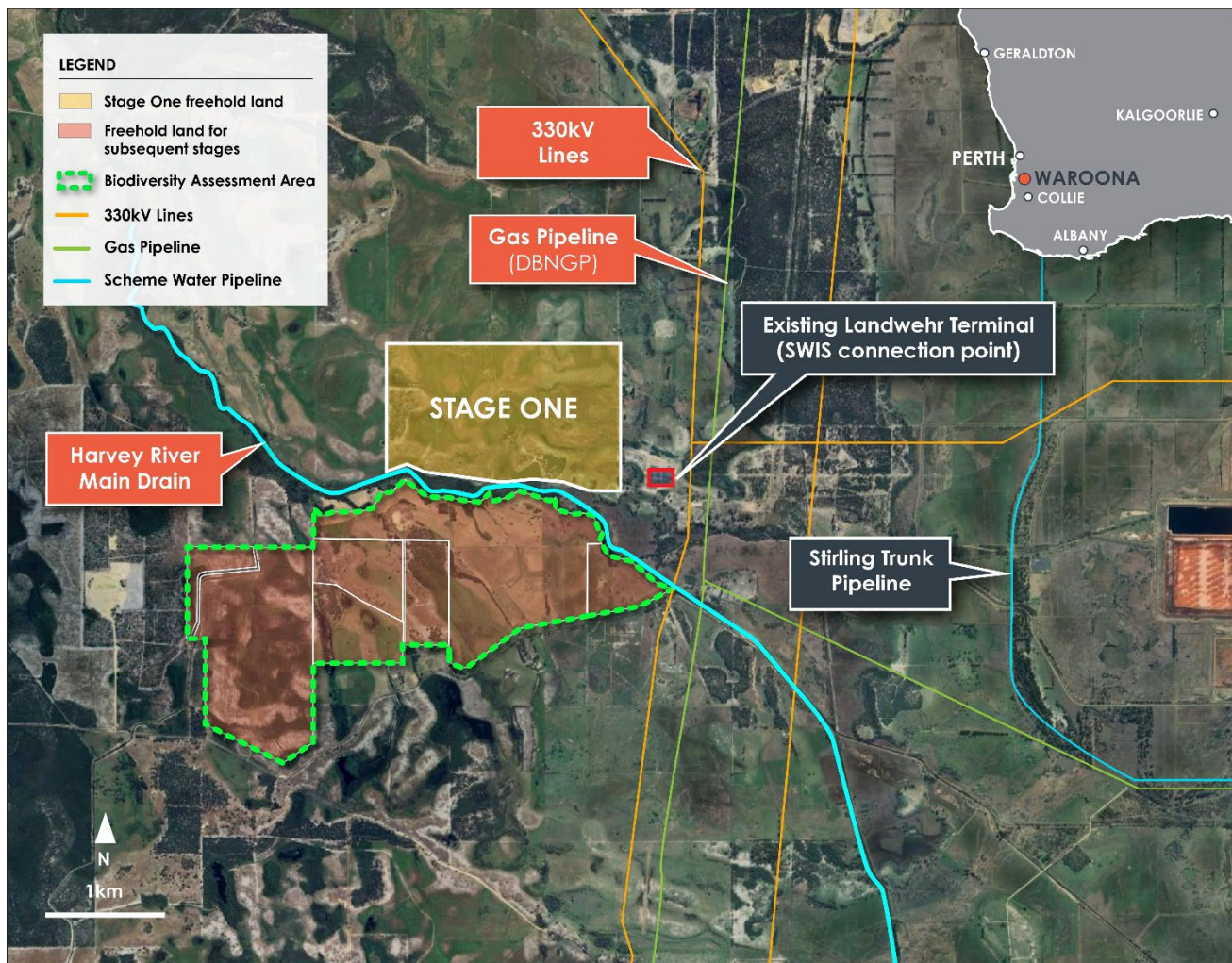


Figure 2: Waroona Renewable Energy Project footprint and survey area

Since 2022, Frontier has acquired interests in additional properties south of the Harvey River Main Drain. These properties are adjacent to Stage One and the Company's original landholding to enable the expansion of the renewable energy project.

In June 2024, Biota was engaged to undertake a biodiversity assessment across the new properties and a verification survey over Frontier's original land interests.

The biodiversity assessment includes:

- A desktop study to identify any significant flora or fauna values potentially associated with the survey area;
- A spring reconnaissance survey and a targeted flora and vegetation survey;
- An assessment of vegetation that may represent a Threatened Ecological Community or Priority Ecological Community; and
- A targeted Black Cockatoo survey and habitat assessment.

The survey recently commenced with a flora and fauna reconnaissance survey and a targeted survey for conservation significant orchid species that only flower in spring. The targeted survey focused on the orchids known to be found in the region and for which the Expansion Area is a potential habitat. No orchids were recorded during the survey.

The next stage of the biodiversity assessment will include a more detailed flora and fauna assessment and a targeted Black Cockatoo survey.

Based on previous surveys in the area, three species of Black Cockatoo are likely to be using the Expansion Area for foraging or roosting, each of which is protected under the Commonwealth *Environment Protection and Biodiversity Conservation Act 1999* (**EPBC Act**) and the WA *Biodiversity Conservation Act 2016*. These species are found throughout southwest Western Australia, but their breeding habitat is in decline due to clearing and competition from other species.

The targeted survey will involve recording opportunistic sightings of any individuals, calls, or signs of foraging; assessment of roosting habitat; assessment and mapping of foraging habitat and identifying any breeding trees. Potentially suitable breeding hollows will be subject to closer inspection via a pole mounted video camera (polecam) or a drone, provided this is not likely to disrupt any breeding activity.

The information collected during the field survey will feed into the solar and battery design process.

Similar to Stage One, Frontier will be prioritising the protection of the conservation significant Black Cockatoos and their habitat and will be identifying high value patches of vegetation for protection. It is likely, however, that approval will need to be sought to clear isolated trees or small patches of vegetation within the properties to enable the construction of the solar and battery infrastructure.

If the isolated trees or small patches of vegetation are found to be conservation significant or provide habitat to threatened species, approval will need to be sought in accordance with the EPBC Act and the *Environmental Protection Act 1986* (EP Act).

An approval strategy and offset plan will be developed in early 2025, following the completion of the survey and assessment report in December 2024. This will also include a Development Approval in accordance with the *Planning and Development Act 2005*.

Authorised for release by Frontier Energy's Board of Directors.

To learn more about the Company, please visit www.frontierhe.com, or contact:

Adam Kiley
Chief Executive Officer
+61 8 9200 3428
akiley@frontierhe.com

Nathan Ryan
NRW Communication
+61 (0) 420 582 887
nathan.ryan@nwrcommunications.com.au



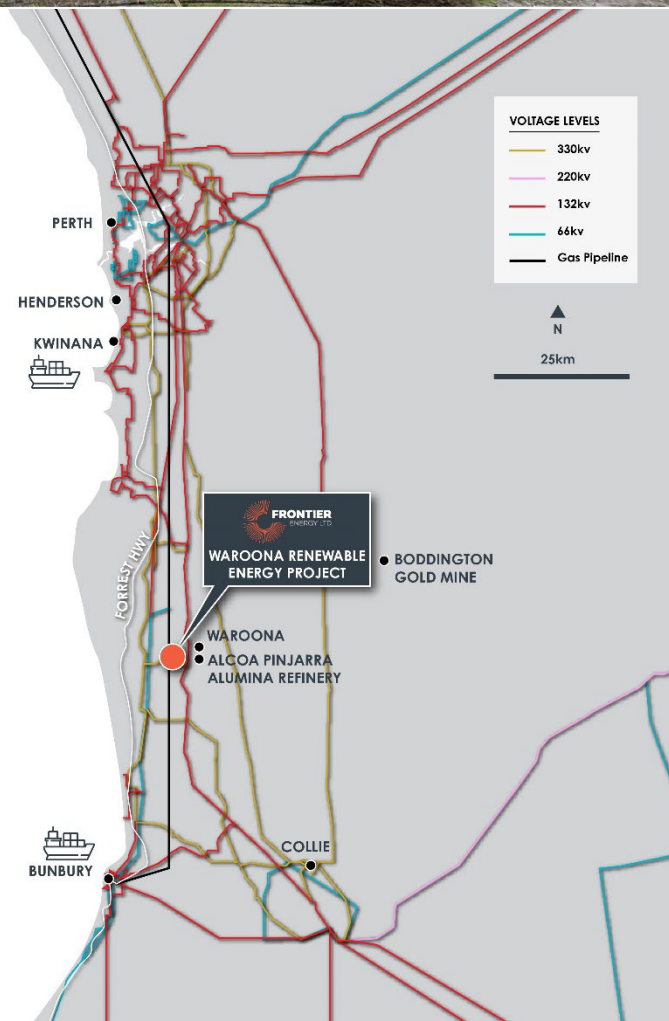
About Frontier Energy

Frontier Energy Ltd (ASX: FHE; OTCQB: FRHYF) is developing the Waroona Renewable Energy Project located 120km south of Perth in Western Australia.

Waroona has the potential to become one of Western Australia's largest standalone renewable energy projects, as the Company controls 868ha of adjoining freehold land whilst also having approvals in place for a connection onto the WA electricity network (SWIS) with a terminal adjacent to the Project.

The Company released a positive DFS on a Stage One development that consists of a 120MW solar farm and 80MW/360MWh battery.

Frontier is fully committed to making the Project one of WA's major renewable energy hubs, incorporating multiple value-adding initiatives including batteries and green hydrogen, with full renewable energy potential of more than 1GW based on connection capacity.



Directors and Management

Mr Mark McGowan AC
Non-Executive Chairman
(Effective on a date to be agreed)

Mr Adam Kiley
Chief Executive Officer

Mr Grant Davey
Executive Director

Mr Chris Bath
Executive Director

Ms Dixie Marshall
Non-Executive Director

Ms Amanda Reid
Non-Executive Director

Registered Office

Level 20, 140 St Georges Terrace
Perth WA 6000

Share Registry

Automatic Registry Services
Level 5, 126 Philip Street
Sydney NSW 2000

For a comprehensive view of information that has been lodged on the ASX online lodgement system and the Company website, please visit asx.com.au and frontierhe.com, respectively.