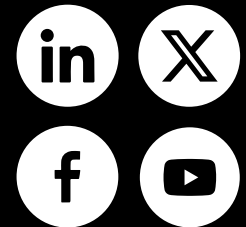




DICKER
D A T A

FY24 Results Presentation



www.dickerdata.com.au



David Dicker

Chairman and CEO's address



10,000+
ACTIVE AU PARTNERS

2,300+
ACTIVE NZ PARTNERS

2024 Highlights

\$3.4b

Gross revenue

▲ +2.9% YOY

\$150.4m

EBITDA

▬ -0.2% YOY

\$895.2m

Recurring gross software sales

▲ +7.5% YOY

\$113.2m

Net profit before tax

▼ -2.8% YOY

43.6c

Earnings per share

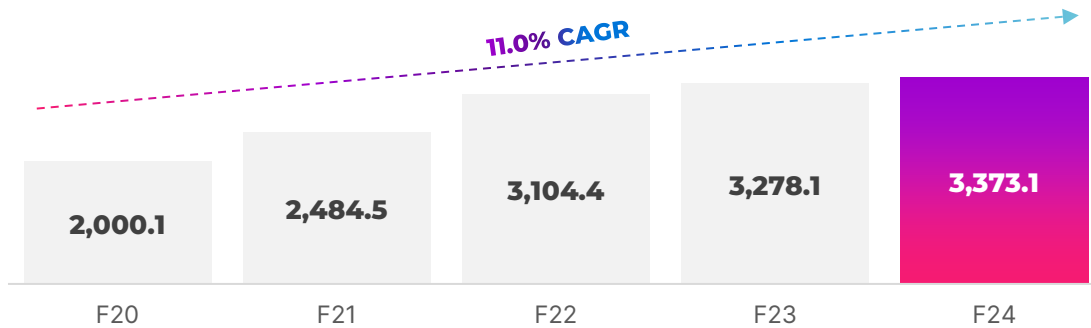
▼ -4.40% YOY

* Gross revenue is non-IFRS unaudited financial information and does not represent revenue in accordance with Australian Accounting Standard. This represents gross proceeds from sale of goods and services, both as agent and principal

Historical Performance

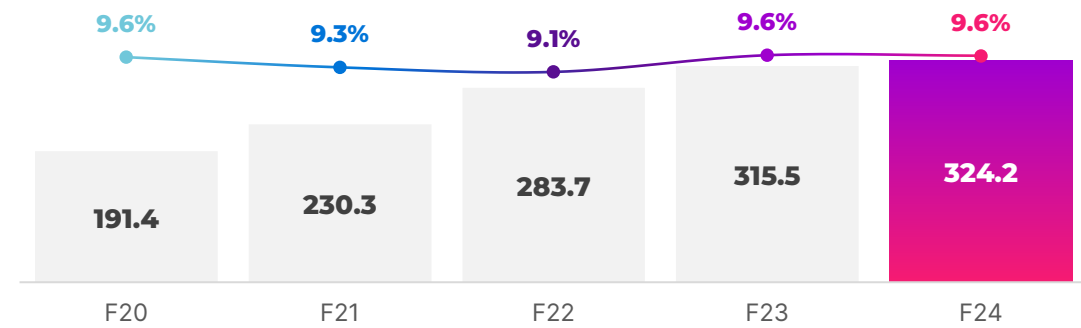
Gross revenue‡

(\$m)



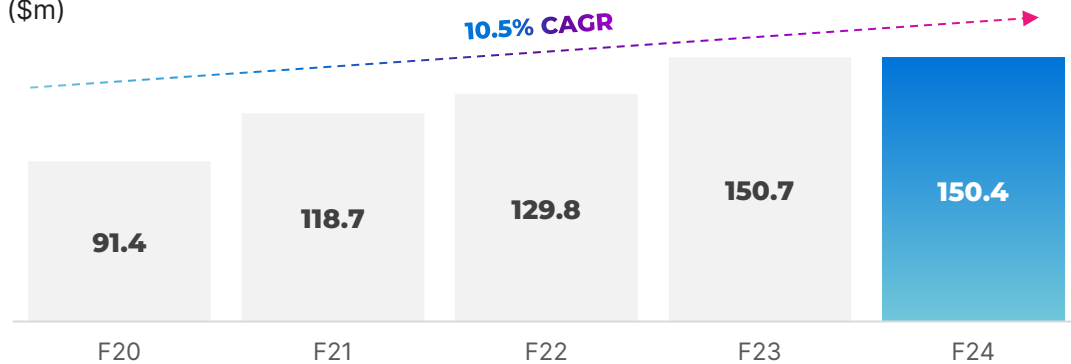
Gross profit

(\$m)

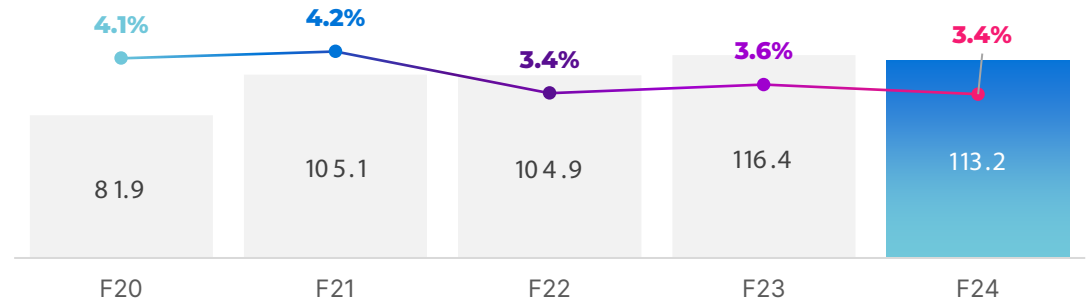


EBITDA*

(\$m)



Net profit before tax \$m & NPBT margin %



‡ Gross revenue is non-IFRS unaudited financial information and does not represent revenue in accordance with Australian Accounting Standards. This represents gross proceeds from sale of goods and services, both as agent and principal. Gross profit and net profit margins are represented as % of gross sales.

* Excludes one off costs: FY24 - \$nil, FY23 - \$0.9m, FY22 - \$2.1m, FY21 - \$1.0m, FY20 - \$nil

FY24 Results

Profit and Loss

- Gross revenue growth for the group of 2.9%
- Recurring gross software sales grew 7.5% to \$895.2m, representing 27% of total gross revenue
- Gross profit margin for the Group remained flat at 9.6%
- Operating costs, excluding one off costs, increased by 6.0%, also increasing as a proportion of revenue to 5.4%, up from 5.3%
- Net profit margin as finalised at 3.4%

12 months (\$m)	Dec-24	Dec-23	Change
Statutory revenue	2,283.0	2,267.7	+0.7%
Gross revenue [‡]	3,373.1	3,278.1	+2.9%
Gross profit	324.2	315.5	+2.7%
Gross margin	9.6%	9.6%	
EBITDA*	150.4	150.7	-0.2%
Profit before tax	113.2	116.4	-2.8%
PBT margin	3.4%	3.6%	
Net profit after tax	78.7	82.1	-4.2%

*Excluding one-off costs of nil (2023: \$0.9m)

[‡]Gross revenue is unaudited non-IFRS financial information and does not represent revenue in accordance with Australian Accounting Standards. This represents gross proceeds from sale of goods and services, both as agent and principal and other revenue. Gross profit and net profit % are represented based on gross revenue

FY24 Results Australia

- Growth of 3.0% for gross sales in Australia despite a competitive market
- Gross profit margins decreased to 9.9% compared to 10.1% in FY23 due to increased competitiveness for available enterprise business, with small and mid-market transactional spending reducing in FY24
- Operating costs increased by 4.3% and increasing as a proportion of revenue to 5.4%, up from 5.3%.
- Interest costs increased by 26.4% predominantly driven by higher borrowings and full year of higher interest rates.

12 months (\$m)	Dec-24	Dec-23	Change
Gross sales	2,802.0	2,719.5	+3.0%
Gross profit	276.6	273.6	+1.1%
Gross margin	9.9%	10.1%	
EBITDA*	134.0	136.1	-1.5%
Profit before tax	105.4	110.9	-5.0%
PBT margin	3.8%	4.0%	
Net profit after tax	73.7	78.3	-5.9%

*Excluding one-off costs of nil (2023: \$0.9m)

FY24 Results New Zealand

- Gross sales in New Zealand increased by 1.9%.
- Gross margins significantly improved finalising at 8.5%, up from 7.6% in the prior year.
- Operating costs increased by 7.6% to be 6.9% of revenues.
- EBITDA increased by 13.0% to \$16.5m.
- Profit before tax increased by 41.8% to \$7.8m delivering 1.4% net profit margin.

** Results are reflected in \$AUD.

12 months (\$m)	Dec-24	Dec-23	Change
Gross sales	560.8	550.2	+1.9%
Gross profit	47.6	41.9	+13.6%
Gross margin	8.5%	7.6%	
EBITDA	16.5	14.6	+13.0%
Profit before tax	7.8	5.5	+41.8%
PBT margin	1.4%	1.0%	
Net profit after tax	5.0	3.8	+29.7%

FY24 Balance Sheet

Total investment in net **working capital** was \$397.4m (2023: \$384.5m) up by \$12.9m from the previous year. The increase in working capital is attributed to an increase in both debtor and inventory days, although this was moderated with increases in payables days with less opportunity to take advantage of supplier settlement discounts.

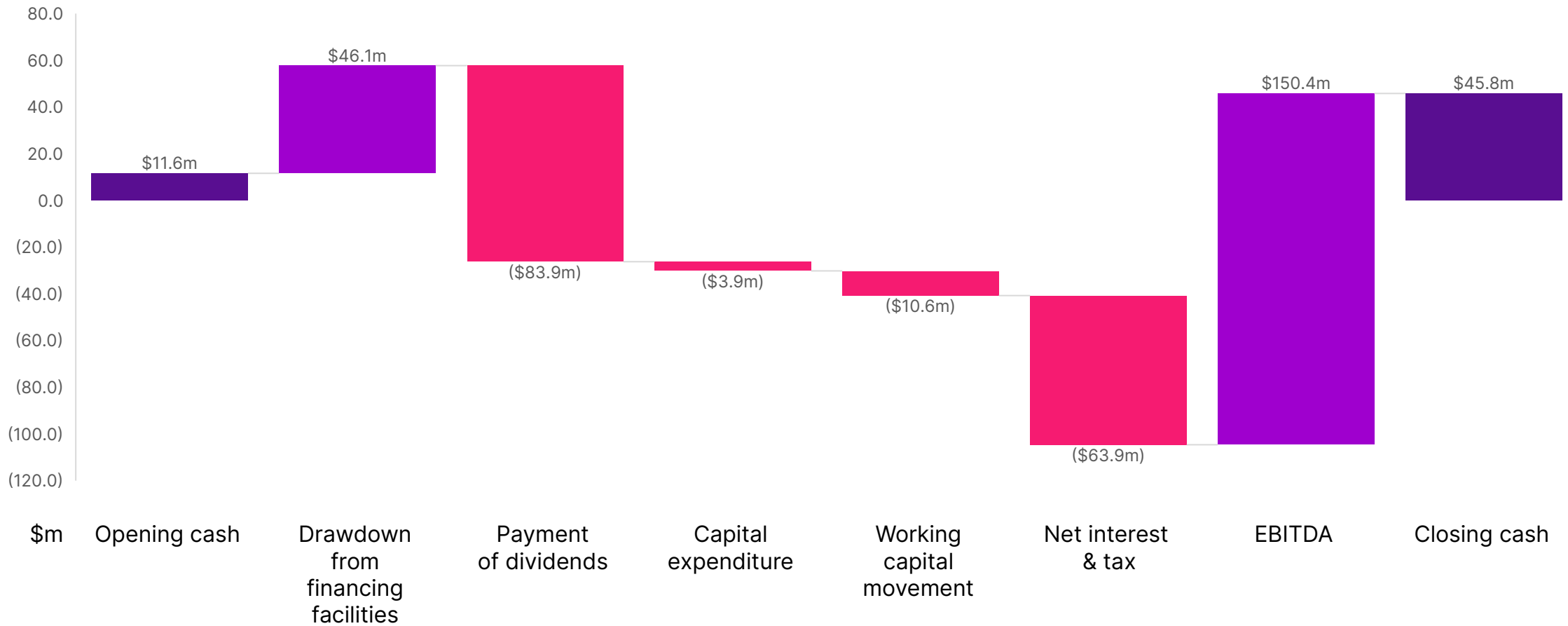
The increase in **borrowings** is reflected in an increase in the drawn balance of the Westpac receivables facility increasing from \$197m to \$245m. This was supported by an increase in the facility limit in April 2024, increasing the limit to \$320m.

12 months (\$m)	Dec-24	Dec-23
Net Working Capital (\$m)	397.4	384.5
Net Working Capital Days	41.8	41.6
Debt to Equity	1.41x	1.18x
Debt Service Cover Ratio	6.11	7.56
Net Tangible Assets (\$m)	159.4	160.9

Net Assets (\$m)	Dec-24	Dec-23
Cash and equivalents	45.8	11.6
Accounts receivable	519.5	485.7
Inventory	286.7	218.9
Other current assets	4.7	-
Total current assets	856.7	716.2
PP&E	94.8	96.7
Goodwill & intangibles	90.3	94.4
Other assets	20.1	19.7
Total assets	1,061.9	927.0
Accounts payable	408.8	320.0
Borrowings	106.6	300.9
Other current liabilities	30.5	26.6
Total current liabilities	545.9	647.5
Borrowings	245.0	-
Other long term liabilities	21.3	24.2
Total liabilities	812.2	671.7
TOTAL NET ASSETS	249.7	255.3
Shareholders' equity		
Share capital	217.2	214.5
Reserves	(0.4)	0.0
Retained earnings	32.9	40.8
TOTAL EQUITY	249.7	255.3

FY24 Results

Cashflow



FY24 Dividends

- The aggregate fully-franked FY24 dividend of 44.0 cps represents a small decrease of 2.2%, marginally down from 45.0 cps for the FY23 year.
- Dividends include a final dividend for FY24 to be paid on 3 March 2025 at 11.0 cps.
- In FY25 the Company intends to maintain its 100% dividend policy and to continue paying interim dividends in quarterly instalments.
- The dividend reinvestment plan (DRP) will be retained for FY25

Payment date	Dividend (CPS)	Type	Amount franked
03-Jun-24	11.0	Interim	100%
02-Sep-24	11.0	Interim	100%
02-Dec-24	11.0	Interim	100%
03-Mar-25	11.0	Final	100%
Total	44.0		

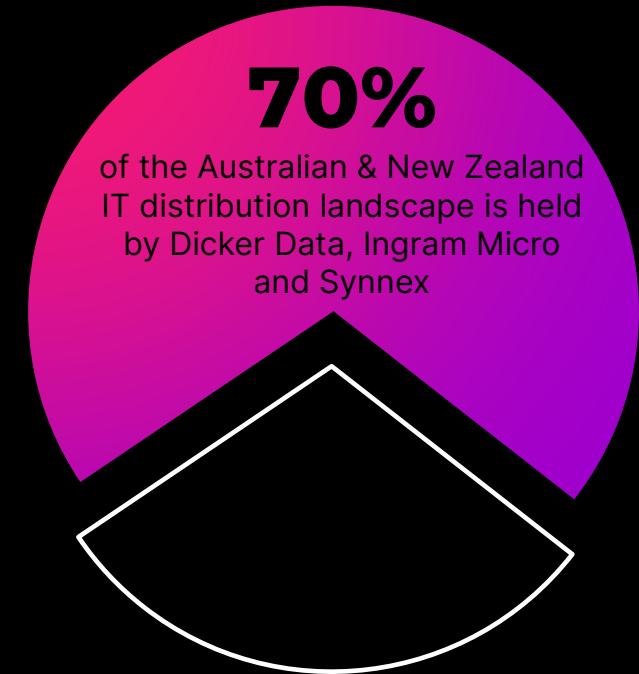


Business Update

Market Positioning Analysis

- The Company continues to grow its share of the Australian and New Zealand markets, retaining a dominant, leading position in Australia and a growth rate in New Zealand that has the Company on track to take the leading position.
- The diversification of our business in recent years has paid dividends by providing access to adjacent markets that have continued to grow. The Company remains ahead of its competition in its ability to execute against this highly diversified strategy, whilst also leveraging synergies between the various ecosystems.
- Despite the challenging economic landscape in Australia and New Zealand, the Company's partner base has remained stable.
- The Company is well-positioned to continue growing its share of the markets in which we operate through its mix of value-added services.
- The Company continues to be selected ahead of its rivals for participation in global strategic initiatives, with significant wins in the FY24 period related to Cisco and Microsoft.

Landscape Update



- Specialty distributors (Exclusive Networks, Tech Data, Leader Computers and Westcon Comstor) represent approximately 30%
- Global distribution company Arrow ECS has announced it is exiting the ANZ market, creating some net new opportunities for the Company



Industry Recognition

CRN

Channel Choice Distributor of the Year
-
Modernising Infrastructure Distributor of the Year
-
ESG Distributor of the Year

ARN

Hardware Distributor of the Year
12TH CONSECUTIVE YEAR
-
Creativity Distributor of the Year

RESELLERNEWS

Software Distributor of the Year
-
Innovation for Good, DEI Champion - Company



Industry Recognition

Acronis

Distributor of the Year - NZ

APC

Distributor of the Year - AU



Distributor of the Year - AU



Distributor of the Year - APAC



Distributor of the Year - APAC



Environmental, Social & Governance Award - ANZ

Harvey Norman

Distributor of the Year - NZ



PC Distributor of the Year - AU
Poly Distributor of the Year - AU
Distributor of the Year - NZ



Hewlett Packard Enterprise

Aruba Distributor of the Year - NZ
Hybrid IT Distributor of the Year - NZ
Marketing MVP of the Year - NZ
HPE Distributor of the Year - AU
HPE Aruba Networking Marketing Partner of the Year - AU



Outstanding Distributor Partner of the Year - NZ

Lenovo

IDG Distributor of the Year - AU

logitech

Distributor of the Year - AU

neat.

Distributor of the Year - AU



Top Value-Added Distributor of the Year - AU



Distributor of the Year - NZ

SONICWALL

Distributor of the Year - AU

VERITAS

Distributor of the Year - AU

2024 ANZ Vendor Additions

Adobe

BlackBerry

bmc

Duress

EQUINIX

HIKVISION

Insta360

Jabra GN

NOTHING

PowerShield

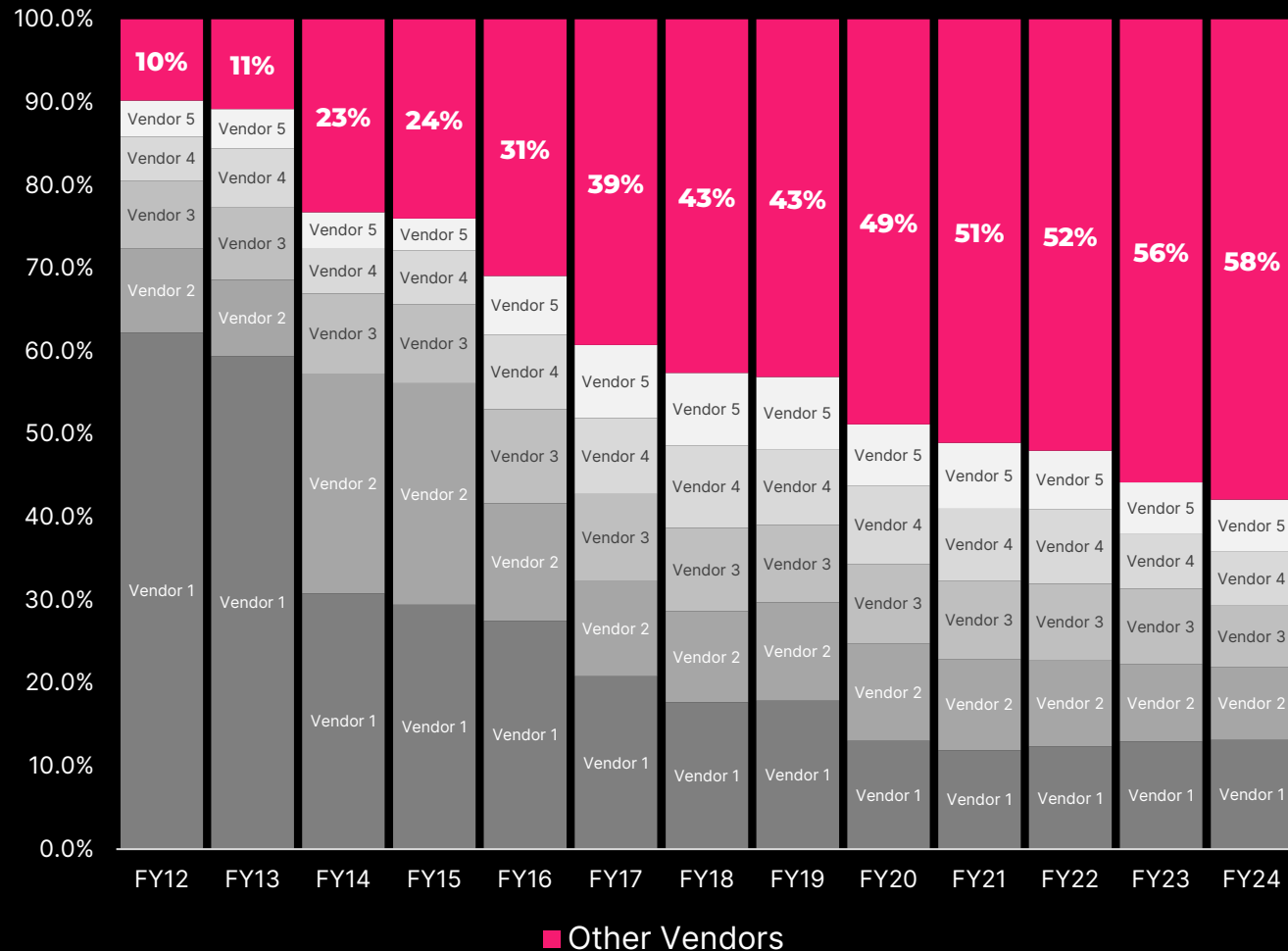
SMART

urbanista

Long-term Vendor Relationships

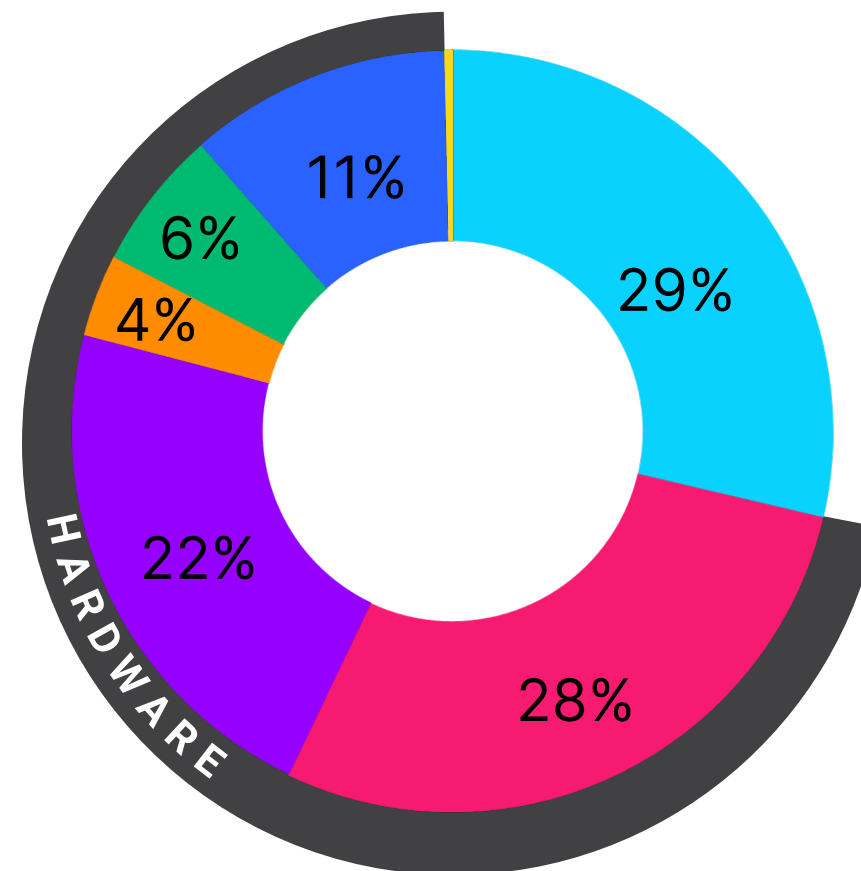
- Dicker Data continues to expand into emerging and converging markets, introducing new vendors either organically or via acquisition to reduce reliance on any single vendor and to expand markets we are servicing
- Top 5 vendors overall contribution has reduced from 90% in FY12 to 42% in FY24

MAJOR VENDOR CONCENTRATION % of sales



Category Performance

Gross sales	FY24 (\$m)	FY23 (\$m)	Change (%)
Software	963.8	914.9	5.3%
End point solutions	956.0	983.6	-2.8%
Advanced solutions	738.9	763.7	-3.3%
Access and surveillance	118.3	109.6	7.9%
Audio visual	201.0	193.3	4.0%
Retail	373.4	292.2	27.8%
Services	11.5	12.4	-6.7%
Total gross sales	3,362.8	3,269.7	2.8%

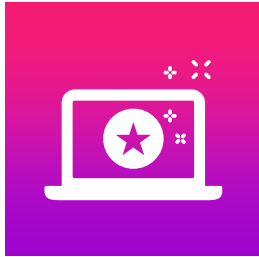


From FY24 onwards the Company will display its sources of revenue in line with the Company's go to market strategy and existing engagement framework with its stakeholders. Advanced solutions encompasses server, storage, networking, power management and all other products associated to datacentre infrastructure. Endpoint solutions encompasses devices, peripherals and accessories required to deliver end client computing.

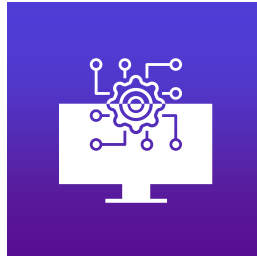


2025 Outlook

2025 Opportunities



Windows 10 Refresh



AI

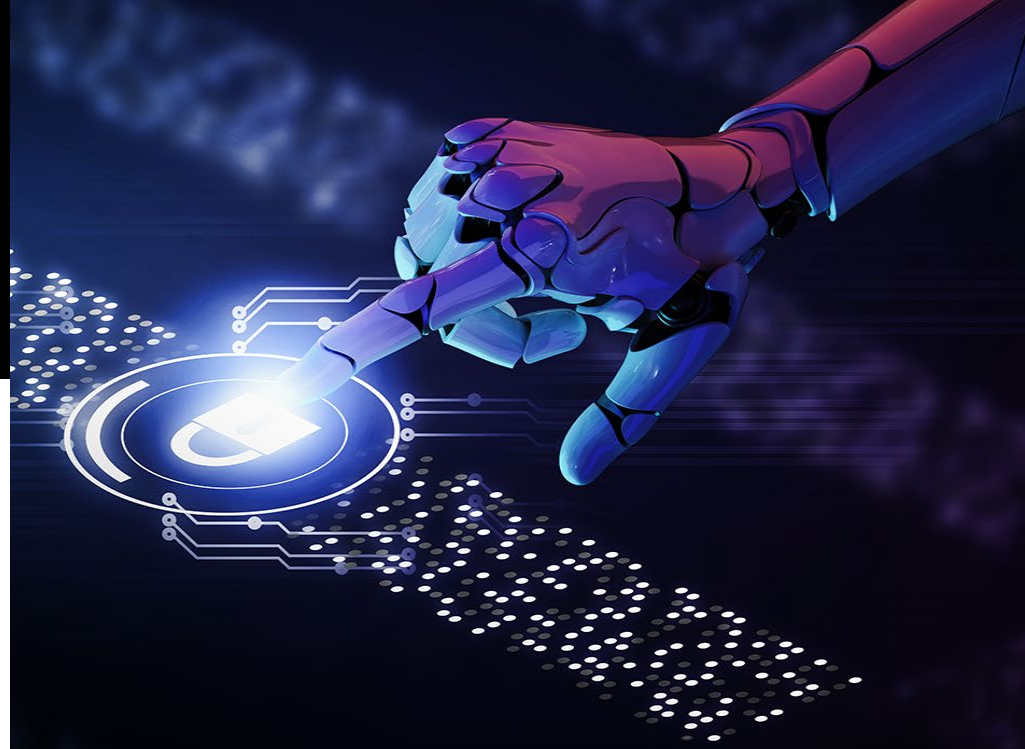


Cybersecurity



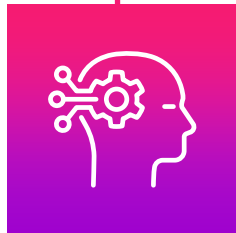
Market Convergence

- Data and analytics
- Collaboration
- Digital transformation
- Diversification



2025 Opportunities:

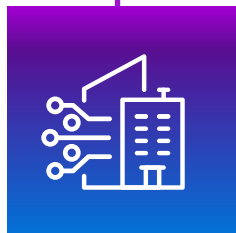
DICKER DATA'S AI LANDSCAPE VIEW



USER FOCUSED **Generative AI**

Capable of generating text, images and other media using generative models. Easily accessible via conversational language by any user anywhere with an internet connection, and eventually locally on their devices.

- Microsoft Copilot
- Adobe Express



ORGANISATION FOCUSED **Embedded AI**

AI technology that's built into products to provide common model management, data collection and preprocessing to enable real-time decision making by AI to deliver better outcomes.

- Cybersecurity
- Wireless Networking
- Security Cameras
- Microsoft Azure
- AI PC



FOUNDATIONAL **Full stack AI**

Integrated, interconnected components in a cohesive platform to collect, analyse and supply business data. Includes guardrails, easy to use interfaces and ensures security, privacy and governance

- NVIDIA
- Microsoft Azure



Questions?



**Scan the QR code to
subscribe to updates
from Dicker Data**

<https://www.dickerdata.com.au/investor#subscribe>

Disclaimer



www.dickerdata.com.au

This presentation has been prepared by Dicker Data Ltd (ACN 000 969 362). All information and statistics in this presentation are current as of 27 February 2025 unless otherwise specified. It contains selected summary information and does not purport to be all-inclusive or to contain all of the information that may be relevant, or which a prospective investor may require in evaluations for a possible investment in Dicker Data Ltd. It should be read in conjunction with Dicker Data's other periodic and continuous disclosure announcements which are available at www.dickerdata.com.au. The recipient acknowledges that circumstances may change, and that this presentation may become outdated as a result. This presentation and the information in it are subject to change without notice and Dicker Data is not obliged to update this presentation. This presentation is provided for general information purposes only. It is not a product disclosure statement, pathfinder document or any other disclosure document for the purposes of the Corporations Act and has not been, and is not required to be, lodged with the Australian Securities & Investments Commission. It should not be relied upon by the recipient in considering the merits of Dicker Data Ltd or the acquisition of securities in Dicker Data Ltd. Nothing in this presentation constitutes investment, legal, tax, accounting or other advice and it is not to be relied upon in substitution for the recipient's own exercise of independent judgment with regard to the operations, financial condition and prospects of Dicker Data. The information contained in this presentation does not constitute financial product advice. Before making an investment decision, the recipient should consider its own financial situation, objectives and needs, and conduct its own independent investigation and assessment of the contents of this presentation, including obtaining investment, legal, tax, accounting and such other advice as it considers necessary or appropriate. This presentation has been prepared without taking account of any person's individual investment objectives, financial situation or particular needs. It is not an invitation or offer to buy or sell, or a solicitation to invest in or refrain from investing in, securities in Dicker Data Ltd or any other investment product. The information in this presentation has been obtained from and based on sources believed by Dicker Data to be reliable. To the maximum extent permitted by law, Dicker Data Ltd makes no representation or warranty, express or implied, as to the accuracy, completeness, timeliness or reliability of the contents of this presentation. To the maximum extent permitted by law, Dicker Data does not accept any liability (including, without limitation, any liability arising from fault or negligence) for any loss whatsoever arising from the use of this presentation or its contents or otherwise arising in connection with it. This presentation may contain forward-looking statements, guidance, forecasts, estimates, prospects, projections or statements in relation to future matters ('Forward Statements'). Forward Statements can generally be identified by the use of forward-looking words such as "anticipate", "estimates", "will", "should", "could", "may", "expects", "plans", "forecast", "target" or similar expressions. Forward Statements including indications, guidance or outlook on future revenues, distributions or financial position and performance or return or growth in underlying investments are provided as a general guide only and should not be relied upon as an indication or guarantee of future performance. No independent third party has reviewed the reasonableness of any such statements or assumptions. No member of Dicker Data Ltd warrants that such Forward Statements will be achieved or will prove to be correct or gives any warranty, express or implied, as to the accuracy, completeness, likelihood of achievement or reasonableness of any Forward Statement contained in this presentation. Except as required by law or regulation, Dicker Data assumes no obligation to release updates or revisions to Forward Statements to reflect any changes. All dollar values are in Australian dollars (\$) or A\$) unless stated otherwise. The recipient should note that this presentation contains pro forma financial information, including a pro forma balance sheet.

David Dicker - CEO
Mary Stojcevski - CFO
Vladimir Mitnovetski - COO

David.Dicker@dickerdata.com.au
Mary.Stojcevski@dickerdata.com.au
Vlad.Mitnovetski@dickerdata.com.au

