

Inspired people
creating a premier
global gold company



March quarter 2025 results presentation

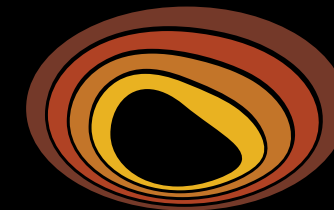
Lawrie Conway – Managing Director and Chief Executive Officer

Jake Klein – Executive Chair

Matt O'Neill – Chief Operating Officer

Nancy Guay – Chief Technical Officer

15 April 2025



Evolution
MINING

Forward looking statement



This presentation prepared by Evolution Mining Limited ('Evolution' or 'the Company') includes forward looking statements. Often, but not always, forward looking statements can generally be identified by the use of forward looking words such as 'may', 'will', 'expect', 'intend', 'plan', 'estimate', 'anticipate', 'continue', and 'guidance', or other similar words and may include, without limitation, statements regarding plans, strategies and objectives of management, anticipated production or construction commencement dates and expected costs or production outputs.

Forward looking statements inherently involve known and unknown risks, uncertainties and other factors that may cause the Company's actual results, performance and achievements to differ materially from any future results, performance or achievements. Relevant factors may include, but are not limited to, changes in commodity prices, foreign exchange fluctuations and general economic conditions, increased costs and demand for production inputs, the speculative nature of exploration and project development, including the risks of obtaining necessary licenses and permits and diminishing quantities or grades of reserves, political and social risks, changes to the regulatory framework within which the Company operates or may in the future operate, environmental conditions including extreme weather conditions, recruitment and retention of personnel, industrial relations issues and litigation.

Forward looking statements are based on the Company and its management's good faith assumptions relating to the financial, market, regulatory and other relevant environments that will exist and affect the Company's business and operations in the future. The Company does not give any assurance that the assumptions on which forward looking statements are based will prove to be correct, or that the Company's business or operations will not be affected in any material manner by these or other factors not foreseen or foreseeable by the Company or management or beyond the Company's control.

Although the Company attempts and has attempted to identify factors that would cause actual actions, events or results to differ materially from those disclosed in forward looking statements, there may be other factors that could cause actual results, performance, achievements or events not to be as anticipated, estimated or intended, and many events are beyond the reasonable control of the Company. Accordingly, readers are cautioned not to place undue reliance on forward looking statements. Forward looking statements in these materials speak only at the date of issue. Subject to any continuing obligations under applicable law or any relevant stock exchange listing rules, in providing this information the Company does not undertake any obligation to publicly update or revise any of the forward-looking statements or to advise of any change in events, conditions or circumstances on which any such statement is based.

Non-IFRS financial information

Investors should be aware that financial data in this presentation includes 'non-IFRS financial information' under ASIC Regulatory Guide 230 Disclosing non-IFRS financial information published by ASIC and also 'non-GAAP financial measures' within the meaning of Regulation G under the U.S. Securities Exchange Act of 1934. Non-IFRS/non-GAAP measures in this presentation include gearing, sustaining capital, major project capital, major mine development, production cost information such as All-in Sustaining Cost and All-in Cost. Evolution believes this non-IFRS/non-GAAP financial information provides useful information to users in measuring the financial performance and conditions of Evolution. The non-IFRS financial information do not have a standardised meaning prescribed by the Australian Accounting Standards ('AAS') and, therefore, may not be comparable to similarly titled measures presented by other entities, nor should they be construed as an alternative to other financial measures determined in accordance with AAS. Investors are cautioned, therefore, not to place undue reliance on any non-IFRS/non-GAAP financial information and ratios included in this presentation. Non-IFRS financial information in this presentation has not been subject to audit or review by the Company's external auditor.

This presentation has been approved for release by Evolution's Board of Directors.

All production and financial information in this presentation represents Evolution's share unless otherwise stated.

Currency is expressed in Australian dollars unless otherwise stated.

Another successful quarter



Delivering to guidance with improving consistency



Cash flow momentum continues



Banking the benefit of high metal prices



Multiple high value growth projects on track

Deleveraging accelerating & increasing returns



Material cash flow generation

- Generating **high margin cash flow** at \$1,115/oz
- Banking the upside of higher metal prices
- Spot price is \$630/oz above March quarter achieved price
- Further improved cash flow expected in June quarter
- **Minimal gold hedging** – achieving 98.5% of average spot price

Balance sheet deleveraging with gearing <20%

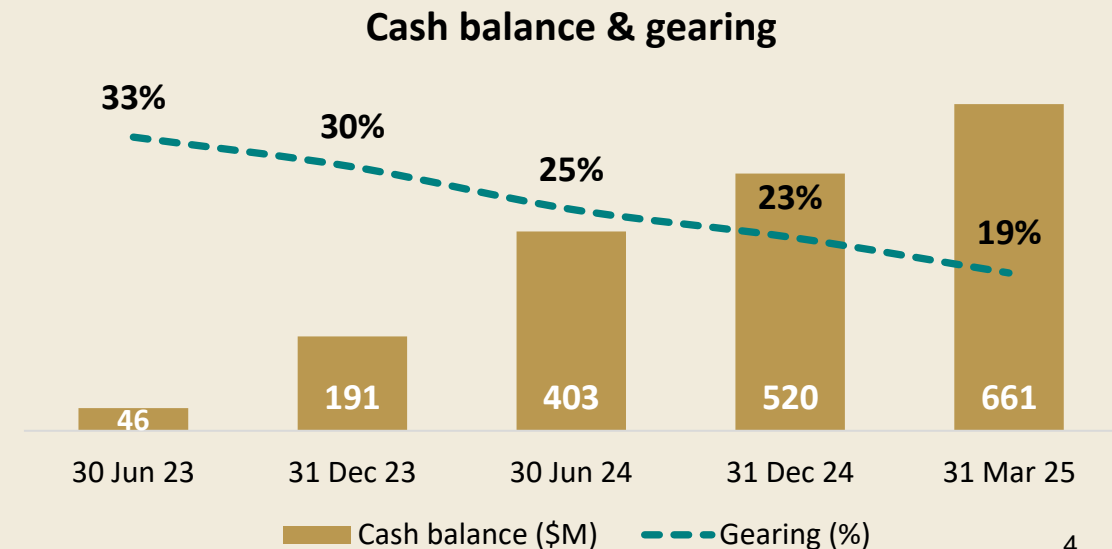
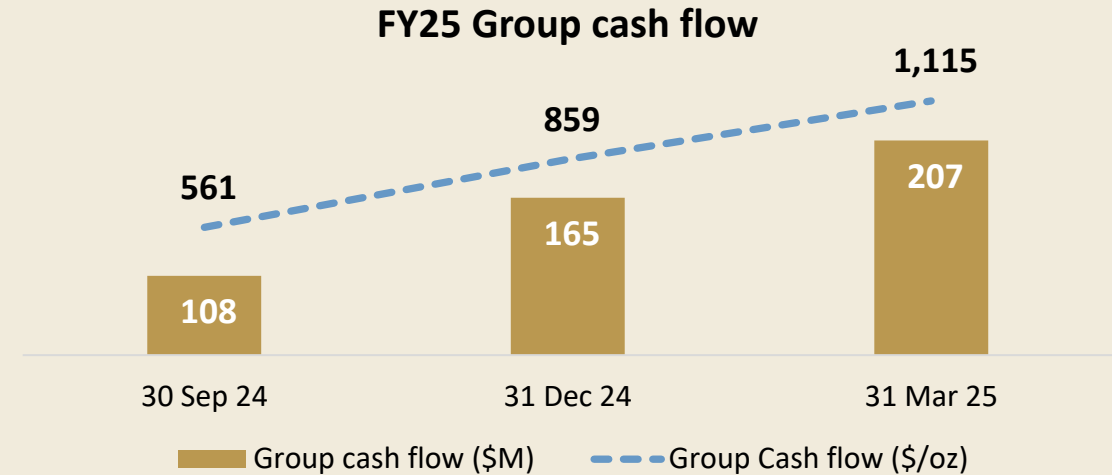
- **Early repayment** of scheduled June quarter debt
- **Gearing improved to 19%** - down from 23% at December

USPP - sector leading long-dated low-cost debt; 75% of total debt

- Average **cost of debt** ~4.5%
- Principal FX fixed, **saving ~\$180M currency exposure**
- Coupon FX fixed, saving ~\$7-8M/yr in interest currency exposure

Shareholder returns increasing

- Deleveraging faster will enable **increased dividends**



Cowal future as cornerstone asset secured

Compelling economics drives investment decision

- Open pit mining **extended by 10+ years and operations to 2042**
- Investment will develop three ore bodies adjacent to E42 pit
- Significant **long-term economic benefits** to the region
- Incremental payable gold of **~1,940koz**
- Quick payback** at 4½ years¹ and **1½ years at spot price**²
- Capital investment of **\$430M over ~7 years**
 - \$65 – 70M major project investment in FY25
- Material upside** at current spot price

Incremental benefits		
Net present value (NPV) (\$M)		
	875	2,310
Base case		At spot price
Internal rate of return (IRR) (%)		
	34%	71%
Base case		At spot price
Payback (years) ³		
	4.5	1.5
Base case		At spot price
Incremental benefits	Base case ¹	At spot price ²
NPV (\$M)	875	2,310
IRR (%)	34	71
Payback (years) ³	4½	1½

Cowal – a world class tier 1 asset

1. Base case assumes a gold price of \$3,300/oz

2. Based on a spot price of \$5,000/oz

3. Payback period is years from first ore.

Queensland Government commits to Mt Rawdon Pumped Hydro



- ✓ **Queensland government** is committed to delivering affordable, reliable and sustainable energy for QLD
- ✓ **Mt Rawdon Pumped Hydro** - one of the most advanced, lowest capital intensive pumped hydro projects in Australia
- ✓ **Competitive on every important metric** compared to other storage alternatives
- ✓ **Will contribute materially** to the Queensland economy and supporting its renewable energy strategy



Evolution and ICA own the project equally, and have been working on it for 5 years

CleanCo investing \$30M for further feasibility work
Completion due 30 September 2025

CleanCo has option to acquire the project
On or before Sept 2025

Parties' interests aligned with milestone payments, rights and obligations through to commissioning

Operations on track to deliver guidance



All operations cash flow positive before major capital

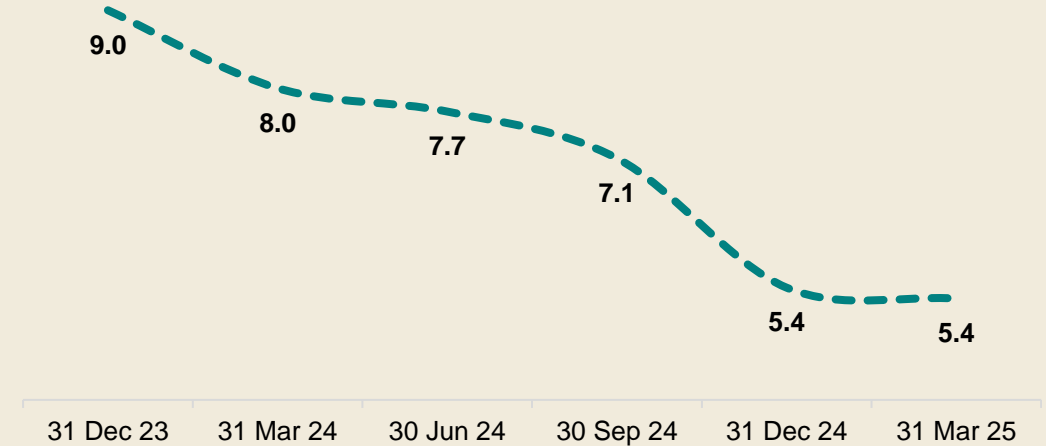
What have we delivered?

- ✓ Record quarterly net mine cash flow at Cowal (\$210M)
- ✓ Ernest Henry delivered \$100M net mine cash flow
- ✓ Mungari plant expansion commissioning; transitioning back to major cash contributor
- ✓ Northparkes' production consistent at lower costs
- ✓ Red Lake mining has stabilised at ~1Mtpa
- ✓ Mt Rawdon solid cash flow as stockpiles processed

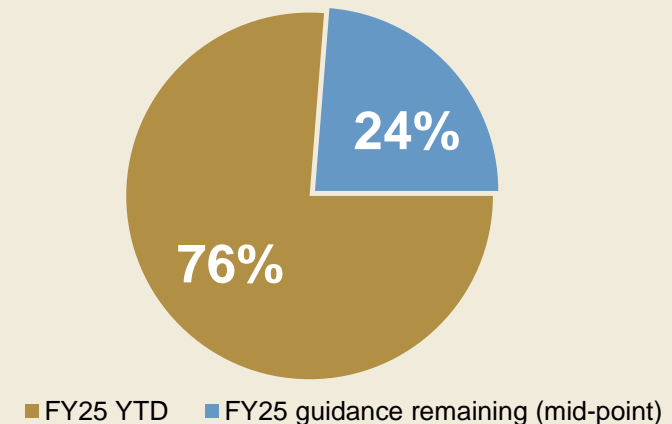
Set up to deliver in June quarter

- Cowal mill shutdown on track for April start up
- Mungari commissioning to be completed
- Red Lake production & cash flow to improve

Safety – TRIF¹ (12 month moving average)



Group gold production² (%)



1. Total recordable injury frequency (TRIF): the frequency of total recordable injuries per million hours worked
2. Group gold production as at 31 March 2025. For more information on FY25 production to date see the ASX announcement titled 'March 2025 quarterly report' dated 15 April 2025 available to view at www.evolutionmining.com.au

Projects tracking well and delivering value

Projects driving organic growth:

- ✓ **Mungari plant expansion** project completed
 - ✓ 9 months ahead of schedule
 - ✓ 9% under the original \$250M budget
- ✓ **Cowal underground** achieving mining rate
 - ✓ Annualised rate of ~2.2Mtpa in March quarter
 - ✓ Ramping up to **2.4Mtpa rate in FY26**
- ✓ **Northparkes**
 - ✓ E48 Pre-Feasibility Study completed, advancing to plan

Set up to complete over next 6-9 months:

- **Mungari** commissioning + ramp up by end June quarter
- **Ernest Henry** Mine Extension Feasibility Study (June quarter)
 - **Bert** Pre-Feasibility Study (December quarter)
- **Northparkes** E22 Trade off study (June quarter)

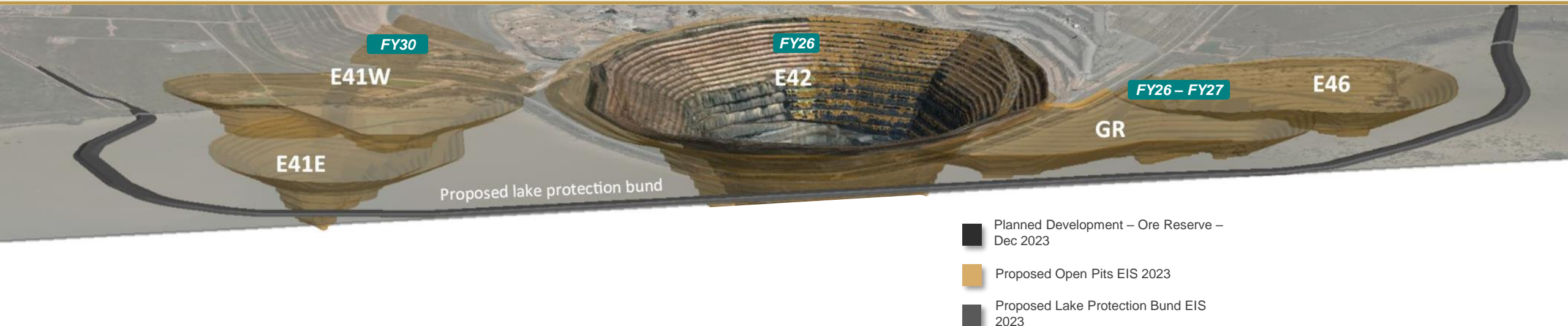


Cowal operations extended to 2042

Open pit mining extended by 10+ years

Key benefits

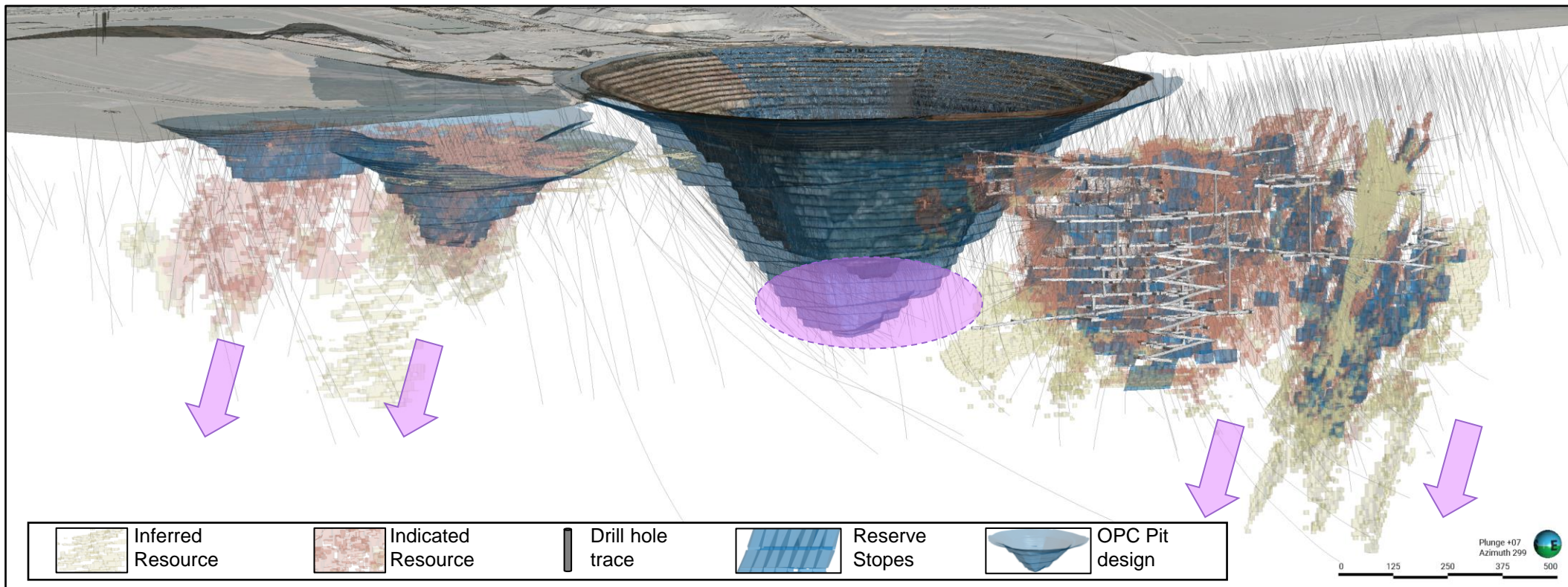
- Pits to be mined over next 10 years: E42 - Stage I, E46, Galway Regal (GR), and E41
- Maintains full utilisation of processing plant capacity
- Favourable proximity between ore sources and existing infrastructure (mill, TSF, etc)
- Timely capital investment on project establishment & low hour truck fleet



Further untapped potential at Cowal

Cowal is a world class mineralised system – with an endowment of 13.3Moz to date¹

- **Track record** of consistent, low-cost, resource replacement ~6Moz at \$23/oz (\$138M)
- OPC enables the **full development of the resource potential** by targeting higher grade underground extensions
- Underground resource growth has the ability to **create additional significant value** for stakeholders



1. Endowment comprises Cowal's total gold production to 31 March 2025 and gold Mineral Resource as at 31 December 2023. The diagram shows mine shapes reflecting Cowal's Mineral Resource as at 31 December 2023. For more information refer to the Company's 'Annual Mineral Resources and Ore Reserves Statement' dated 14 February 2024 and available to view at <https://evolutionmining.com.au/asx-announcements/>

Set for a strong finish



Positioned for strong finish to FY25



Material cash flow generation expected to continue



Projects driving organic growth across the portfolio



Disciplined capital allocation, banking high metal prices

Appendix FY25 Guidance



FY25 guidance



FY25 guidance	Gold production (koz)	Copper production (kt)	AISC (\$/oz) ^{1,2}	Sustaining capital (\$M) ³	Major mine development capital (\$M) ⁴	Major project capital (\$M) ⁵	Depreciation & amortisation (\$/oz) ^{2,6}
Group	710 – 780	70 – 80	1,475 – 1,575	215 – 270	180 – 230	510 – 580	900 – 1,000
Cowal	315 – 335	–	1,700 – 1,770	45 – 55	30 – 40	70 – 85	430 – 480
<i>Cowal OPC</i>	–	–	–	–	~5	65 – 70	–
Ernest Henry	75 – 80	47 – 53	(2,500) – (2,300)	50 – 60	25 – 35	95 – 105	2,300 – 2,500
Northparkes	40 – 50	23 – 27	(1,600) – (1,400)	25 – 35	15 – 20	25 – 35	2,000 – 2,200
Mungari	125 – 135	–	2,550 – 2,650	45 – 55	30 – 45	110 – 130	550 – 600
<i>Mungari 4.2 Early commissioning</i>	–	–	–	–	~25	~80	–
Red Lake	125 – 145	–	2,500 – 2,600	40 – 50	50 – 60	65 – 75	850 – 950
Mt Rawdon	30 – 35	–	3,000 – 3,500	5 – 10	–	–	2,200 – 2,300
Corporate	–	–	110 – 125	5	–	–	3 – 4

1. AISC includes C1 cash cost, plus royalties, sustaining capital, general corporate and administration expense, calculated per ounce sold. FY25 guidance range for group AISC calculated for continuing operations - excluding Mt Rawdon, which will cease operations in FY25
2. AISC and gold equivalent calculations are based on metal prices of \$14,350/t for copper and \$3,300/oz gold
3. Sustaining capital relates to investment to maintain ongoing production per World Gold Council (WGC) guidelines
4. Major mine development comprises costs incurred to establish access to ore bodies over long term
5. Major project capital includes expenditure to establish new assets, or a material change in production rates as per WGC
6. Ernest Henry and Northparkes depreciation per equivalent gold ounce is \$1,600 - \$1,770\$/oz and \$1,475 - \$1,630\$/oz respectively

Appendix Mineral Resources and Ore Reserves



Group gold Mineral Resources at 31 December 2023



Gold			Measured			Indicated			Inferred			Total Resource			CP ⁹
Project	Type	Cut-off (g/t Au)	Tonnes (Mt)	Gold Grade (g/t)	Gold Metal (koz)	Tonnes (Mt)	Gold Grade (g/t)	Gold Metal (koz)	Tonnes (Mt)	Gold Grade (g/t)	Gold Metal (koz)	Tonnes (Mt)	Gold Grade (g/t)	Gold Metal (koz)	
Cowal ¹	Stockpiles	0.35g/t Au	46.4	0.51	763	2.0	0.65	42	-	-	-	48.4	0.52	805	1
Cowal ²	Open pit	0.35g/t Au	-	-	-	172.0	0.85	4,691	30.0	0.79	763	202.0	0.84	5,455	1
Cowal ³	Underground	1.5g/t Au	-	-	-	21.7	2.50	1,741	13.1	2.37	998	34.8	2.45	2,738	1
Cowal ¹	Total		46.4	0.51	763	195.6	1.03	6,474	43.1	1.27	1,761	285.1	0.98	8,998	1
Ernest Henry ⁴	Total	0.7% Cu	30.3	0.82	798	36.7	0.78	920	30.1	0.69	670	97.1	0.76	2,388	2
Mungari ¹	Stockpiles		-	-	-	3.0	0.60	58	0.0	1.14	2	3.1	0.60	59	
Mungari ²	Open pit	0.29 – 0.33g/t Au	-	-	-	75.6	0.97	2,347	28.3	1.02	926	103.9	0.98	3,273	3
Mungari ³	Underground	1.46 – 2.47g/t Au	1.5	4.63	219	8.6	4.34	1,199	8.7	3.98	1,120	18.8	4.20	2,538	3
Mungari ¹	Total		1.5	4.63	219	87.2	1.29	3,603	37.1	1.72	2,048	125.8	1.45	5,870	3
Red Lake ^{1,3}	Total	2.5 – 3.3g/t Au	-	-	-	32.4	6.89	7,174	22.7	6.10	4,456	55.1	6.56	11,631	4
Mt Rawdon ¹	Total	0.23g/t Au	5.9	0.30	57	3.7	0.65	77	-	-	-	9.5	0.44	134	5
Marsden ⁵	Total	~0.2g/t Au	-	-	-	119.8	0.27	1,031	3.1	0.22	22	123.0	0.27	1,053	6
Subtotal			84.0	0.68	1,837	475.4	1.26	19,279	136.2	2.05	8,957	695.7	1.34	30,073	
Northparkes ⁶	Open pit	Various	7.3	1.05	246	2.4	1.2	93	0.1	1.16	6	9.8	1.09	345	7
Northparkes ⁷	Underground	Various	192.0	0.19	1,153	172.5	0.15	832	46.5	0.19	280	410.9	0.17	2,264	8
Northparkes ⁸	Total		199.3	0.22	1,398	174.9	0.16	925	46.6	0.19	285	420.8	0.19	2,609	
Grand Total			283.3	0.36	3,235	650.3	0.97	20,205	182.8	1.57	9,242	1,116.4	0.91	32,682	

Data is reported to significant figures to reflect appropriate precision and may not sum precisely due to rounding.

1. Includes stockpiles

2. Open Pit Mineral Resource reporting shells were optimised using a gold price of \$AU 2,500/oz. All material which meets or exceeds the cut-off grade within the developed pit shells is included in the reported Mineral Resource

3. Underground Mineral Resource reporting shapes were developed using a gold price of \$AU 2,500/oz; all material which falls within optimized mining shapes inclusive of internal waste or low grade is included in the reported Mineral Resource

4. Ernest Henry Operations reported Mineral Resources are reported within an interpreted 0.7% Cu mineralised envelope which includes internal waste and low-grade material

5. Marsden Mineral Resource is reported based on an NSR value calculation that considers mining and processing costs, metallurgical recoveries, royalties, transport and refining costs into account. The NSR produces a value cut-off (by block) that is approximately equivalent to a 0.2g/t gold cut-off

6. Northparkes Open Pit Mineral Resource includes all material within designed pit shells above an economic cutoff grade; cut-off grades are 0.65g/t Au for E44 and 0.34% CuEq for E31 and have been calculated based on US\$3.30/lb copper, US\$1,350/oz gold and 0.73 AUD:USD conversion rate

7. Northparkes Underground Mineral Resource metal price and exchange rate assumptions vary by project, reporting shapes were developed using price assumptions between US \$1.69 - US\$3/lb copper, US\$660 - US\$1350/oz gold and an AU\$:US\$ conversion rate of 0.73 - 0.75. Northparkes underground cut-off grades are reported within 0.4% Cu grade shells with the exception of E22 using A\$18NSR, E26 L2 using A\$40NSR and MJH using A\$25NSR

8. The reported Mineral Resource shown for Northparkes is exclusive of Ore Reserves. The values reported reflect the 80% portion attributable to Evolution Mining only. Triple Flag Metal Purchase and Sale Agreement purchased 67.5% of gold production capped at 630koz gold, followed by 33.75% gold production for the remaining life of mine with ongoing payments equal to 10% of the spot metal price delivered – 41koz delivered under this agreement to 31/12/2023

9. Mineral Resources Competent Persons (CP's) are: 1. Ben Reid; 2. Phil Micale; 3. Brad Daddow; 4. Alain Mouton; 5. Mathew Graham-Ellison; 6. James Biggam; 7. Geoff Smart; 8. David Richards

This information is extracted from the release titled 'Annual Mineral Resources and Ore Reserves Statement' dated 14 February 2024 and available to view at www.evolutionmining.com.au. The Company confirms that it is not aware of any new information or data that materially affects the information included in the release and that all material assumptions and parameters underpinning the estimates in the release continue to apply and have not materially changed. The Company confirms that the form and context in which the Competent Persons' findings are presented have not been materially modified from the Reports

Group gold Ore Reserves at 31 December 2023



Gold			Proved			Probable			Total Reserve			Competent Person ¹⁰
Project	Type	Cut-off (g/t Au)	Tonnes (Mt)	Gold Grade (g/t)	Gold Metal (koz)	Tonnes (Mt)	Gold Grade (g/t)	Gold Metal (koz)	Tonnes (Mt)	Gold Grade (g/t)	Gold Metal (koz)	
Cowal ¹	Stockpiles	0.45g/t Au	40.4	0.52	681	2.0	0.65	42	42.4	0.53	723	1
Cowal ²	Open pit	0.45g/t Au	-	-	-	73.6	1.00	2,376	73.6	1.00	2,376	1
Cowal ³	Underground	0.6 / 1.8 g/t Au	-	-	-	18.7	2.27	1,364	18.7	2.27	1,364	2
Cowal¹	Total		40.4	0.52	681	94.3	1.25	3,783	134.6	1.03	4,463	
Ernest Henry⁴	Underground	0.50 – 0.75% CuEq	24.6	0.62	491	49.9	0.36	573	74.5	0.44	1,064	3
Mungari ¹	Stockpiles	0.45g/t Au	-	-	-	1.1	0.83	28	1.1	0.83	28	4
Mungari ⁵	Open pit	0.39 – 0.56g/t Au	-	-	-	33.2	1.05	1,121	33.2	1.05	1,121	4
Mungari ⁶	Underground	2.18 – 3.63g/t Au	0.4	4.42	60	2.7	4.39	385	3.1	4.40	445	4
Mungari¹	Total		0.4	4.42	60	36.9	1.29	1,534	37.4	1.33	1,595	
Red Lake^{1,7}	Total	2.5 – 4.1g/t Au	-	-	-	12.4	6.87	2,748	12.4	6.87	2,748	5
Mt Rawdon¹	Open pit	0.32g/t Au	1.9	0.41	25	3.3	0.70	75	5.2	0.59	100	6
Marsden⁸	Open pit	0.3g/t Au	-	-	-	65.2	0.39	817	65.2	0.39	817	7
Subtotal			67.3	0.58	1,258	262.2	1.13	9,530	329.4	1.02	10,787	
Northparkes¹	Stockpile	0.38 – 0.58% CuEq	3.1	0.32	32	-	-	-	3.1	0.32	32	8
Northparkes⁹	Open pit	0.33 – 0.50% CuEq	8.4	0.50	134	1.3	0.30	12	9.7	0.47	147	8
Northparkes⁹	UG	0.38 – 0.58% CuEq	0.6	0.37	7	61.6	0.24	477	62.2	0.24	484	9,10
Northparkes¹	Total		12.1	0.44	173	62.9	0.24	489	75.0	0.27	662	
Grand Total			79.4	0.56	1,430	324.9	0.96	10,019	404.3	0.88	11,449	

Data is reported to significant figures to reflect appropriate precision and may not sum precisely due to rounding

1. Includes stockpiles

2. Cowal Open Pit Ore Reserves are reported with respect to the declared Mineral Resource from December 2023. E42, E41, E46 and GRE Open Pit Ore Reserves are supported by the OPC Feasibility Study completed in June 2023 that demonstrates the proposed mine plans and schedules are economically viable. E46 and GR were optimised using a A\$1,800/oz gold price assumption. E41 and E42 Stage I were optimised using gold price assumptions of \$1,584/oz and \$1,944/oz respectively. The Cowal Open Pit Ore Reserves are economic viable at the Evolution life of mine gold price assumption of A\$2,650/oz.

3. Cowal Underground Ore Reserve has been optimised using a A\$1,800/oz price assumption, economically tested at up to A\$2,650/oz and considers updated modifying factors and depletion. The Cowal Underground Ore Reserve includes development material at an incremental cut-off grade of 0.6g/t Au

4. Ernest Henry reported Ore Reserve estimate is based on the December 2022 Mineral Resource detailed in the ASX Release titled "Annual Mineral Resources and Ore Reserves Statement" dated 16 Feb 2023 and available to view at www.evolutionmining.com.au. The applied flow model cut-off grades of 0.50 % and 0.75% copper equivalent ('CuEq') are determined through an economic evaluation process which considers the Net Smelter Return (NSR) and operating costs. The utilised copper equivalent equation is: CuEq = Cu + Au NSR/56.4 where; Au NSR = 38.5 * Au - 0.047

5. Mungari Open Pit Ore Reserve cut-off varies from 0.39g/t Au to 0.65g/t Au; the weighted average cut-off is 0.50g/t Au. Gold prices between A\$1,800 and A\$2,400/ounce were used to calculate cut-off grades for Open Pit Ore Reserve estimate

6. Mungari Underground Ore Reserve cut-off varies from 2.80g/t Au to 3.63g/t Au; the weighted average cut-off is 3.19g/t Au. Gold price of A\$1,800 was used to calculate cut-off grades for the Underground Ore Reserve estimate

7. Red Lake Ore Reserve has been evaluated using an A\$1800/oz price, except for the Upper Campbell and Upper Red Lake regions which have been re-reported this year using previous price assumptions of A\$1600/oz. In 2024 a 'Hill of Value' study is scheduled to optimize the mine plan and cutoff criteria throughout the operation

8. The Marsden Ore Reserve has been reported using a 'Net Smelter Return' (NSR) cut-off which takes into account ore haulage from Marsden to Cowal, ore processing costs at Cowal, general and administration costs, treatment and refining costs, concentrate costs, metallurgical recoveries, metal payabilities, metal prices, and royalties. The breakeven NSR value equates approximately to a 0.3g/t Au cutoff. The Ore Reserve estimate was developed using a A\$1,350 per ounce gold price and a A\$6000/t copper price

9. Northparkes Ore Reserve is based on Pre-Feasibility & Feasibility studies completed at different times using differing price assumptions. Copper price assumptions vary between US\$ 2.75-3.77/lb, Gold price assumptions vary between US\$ 1250-1750/oz and AUD:USD exchange rates used were between 0.73-0.78. The values reported reflect the 80% portion attributable to Evolution Mining only.

10. Group Gold Ore Reserve Competent Person (CP) Notes refer to 1. Dean Basile (Mining One); 2. Ryan Bettcher; 3. Michael Corbett; 4. Blake Callinan; 5. Brad Armstrong; 6. Ben Young; 7. Glen Williamson; 8. Sam Ervin; 9. Mark Flynn; 10. Sarah Webster

This information is extracted from the release titled 'Annual Mineral Resources and Ore Reserves Statement' dated 14 February 2024 and available to view at www.evolutionmining.com.au. The Company confirms that it is not aware of any new information or data that materially affects the information included in the release and that all material assumptions and parameters underpinning the estimates in the release continue to apply and have not materially changed. The Company confirms that the form and context in which the Competent Persons' findings are presented have not been materially modified from the Reports

Group copper Mineral Resources at 31 December 2023



Copper			Measured			Indicated			Inferred			Total Resource			CP ⁶
Project	Type	Cut-off	Tonnes (Mt)	Copper Grade (%)	Copper Metal (kt)	Tonnes (Mt)	Copper Grade (%)	Copper Metal (kt)	Tonnes (Mt)	Copper Grade (%)	Copper Metal (kt)	Tonnes (Mt)	Copper Grade (%)	Copper Metal (kt)	
Ernest Henry ¹	Total	0.7% Cu	30.3	1.39	422	36.7	1.33	487	30.1	1.18	354	97.1	1.30	1,263	1
Marsden ²	Total	~0.2g/t Au	-	-	-	119.8	0.46	553	3.1	0.24	7	123.0	0.46	560	2
Subtotal			30.3	1.39	422	156.5	0.66	1,040	33.2	1.09	362	220.1	0.83	1,823	
Northparkes ³	Open pit	Various	7.3	0.16	12	2.4	0.03	1	0.1	0.03	0	9.8	0.12	12	3
Northparkes ⁴	UG	Various	192.0	0.58	1,116	172.5	0.54	923	46.5	0.57	265	410.9	0.56	2,304	4
Northparkes ⁵	Total		199.3	0.57	1,128	174.9	0.53	924	46.6	0.57	265	420.8	0.55	2,316	
Grand Total			229.6	0.68	1,550	331.4	0.59	1,963	79.8	0.78	626	640.9	0.65	4,139	

Data is reported to significant figures to reflect appropriate precision and may not sum precisely due to rounding.

1. Ernest Henry Operations reported Mineral Resources are reported within an interpreted 0.7% Cu mineralised envelope which includes internal waste and low-grade material

2. Marsden Mineral Resource is reported based on an NSR value calculation that considers mining and processing costs, metallurgical recoveries, royalties, transport and refining costs into account. The NSR produces a value cut-off (by block) that is approximately equivalent to a 0.2g/t gold cut-off

3. Northparkes Open Pit Mineral Resource includes all material within designed pit shells above an economic cutoff grade; cut-off grades are 0.65g/t Au for E44 and 0.34% CuEq for E31 based on US\$3.30/lb copper, US\$1,32/oz gold and 0.73 AUD:USD conversion rate

4. Northparkes Underground Mineral Resource metal price and exchange rate assumptions vary by project, reporting shapes were developed using price assumptions of US \$1.69 – US\$3/lb copper, US\$660 – US\$1350/oz gold and an AU\$:US\$ conversion rate of 0.73 -0.75. Northparkes underground cut-off grades are reported within 0.4% Cu grade shells with the exception of E22 using A\$18NSR, E26 L2 using A\$40NSR and MJH using A\$25NSR

5. The reported Mineral Resource shown for Northparkes is exclusive of Ore Reserves. The values reported reflect the 80% portion attributable to Evolution Mining only. Triple Flag Metal Purchase and Sale Agreement purchased 67.5% of gold production capped at 630koz gold, followed by 33.75% gold production for the remaining life of mine with ongoing payments equal to 10% of the spot metal price delivered – 41koz delivered under this agreement to 31/12/2023

6. Group Copper Mineral Resource Competent Person (CP) Notes refer to 1. Phil Micale; 2. James Biggam; 3. Geoff Smart; 4. David Richards

This information is extracted from the release titled 'Annual Mineral Resources and Ore Reserves Statement' dated 14 February 2024 and available to view at www.evolutionmining.com.au. The Company confirms that it is not aware of any new information or data that materially affects the information included in the release and that all material assumptions and parameters underpinning the estimates in the release continue to apply and have not materially changed. The Company confirms that the form and context in which the Competent Persons' findings are presented have not been materially modified from the Reports

Group copper Ore Reserves at 31 December 2023



Copper			Proved			Probable			Total Reserve			CP ⁵
Project	Type	Cut-Off	Tonnes (Mt)	Copper Grade (%)	Copper Metal (kt)	Tonnes (Mt)	Copper Grade (%)	Copper Metal (kt)	Tonnes (Mt)	Copper Grade (%)	Copper Metal (kt)	
Ernest Henry ¹	Underground	0.50 – 0.75% CuEq	24.6	1.08	267	49.9	0.59	297	74.5	0.76	563	1
Marsden ²	Open pit	0.3g/t Au	-	-	-	65.2	0.57	371	65.2	0.57	371	2
Subtotal			24.6	1.08	267	115.1	0.58	668	139.7	0.67	934	
Northparkes ³	Stockpiles	0.33 – 0.55% CuEq	3.1	0.31	10				3.1	0.31	10	
Northparkes ⁴	Open pit	0.34 – 0.50% CuEq	8.4	0.35	30	1.3	0.31	4	9.7	0.35	33	3
Northparkes ⁴	UG	0.38 – 0.58% CuEq	0.6	0.49	3	61.6	0.55	340	62.2	0.55	343	4,5
Northparkes	Total		12.1	0.35	42	62.9	0.55	344	75	0.51	386	
Grand Total			36.7	0.84	309	177.9	0.57	1,011	214.7	0.62	1,320	

Data is reported to significant figures to reflect appropriate precision and may not sum precisely due to rounding

1. Ernest Henry reported Ore Reserve estimate is based on the December 2022 Mineral Resource detailed in the ASX Release titled "Annual Mineral Resources and Ore Reserves Statement" dated 16 Feb 2023 and available to view at www.evolutionmining.com.au. The applied flow model cut-off grades of 0.50 % and 0.75% copper equivalent ('CuEq') are determined through an economic evaluation process which considers the Net Smelter Return (NSR) and operating costs. The utilised copper equivalent equation is: $CuEq = Cu + Au \cdot NSR/56.4$ where; $Au \cdot NSR = 38.5 \cdot Au - 0.047$

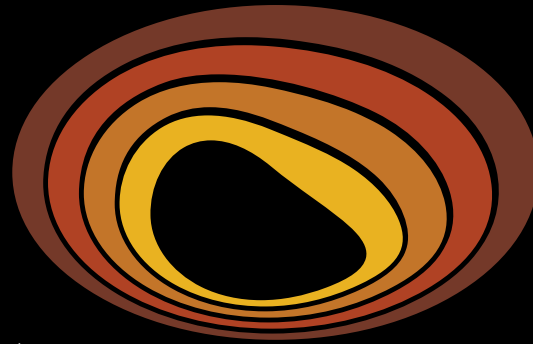
2. Marsden Ore Reserve is reported based on an NSR value calculation that considers ore haulage from Marsden to Cowal, ore processing costs at Cowal, general and administration costs, treatment and refining costs, concentrate costs, metallurgical recoveries, metal payabilities, metal prices, and royalties. The breakeven NSR value equates approximately to a 0.3g/t Au cutoff. The Ore Reserve estimate was developed using a A\$1,350 per ounce gold price and a A\$6000/t copper price

3. Includes stockpiles

4. Northparkes Ore Reserve is based on Pre-Feasibility & Feasibility studies completed at different times using differing price assumptions. Copper price assumptions vary between US\$ 2.75-3.77/lb, Gold price assumptions vary between US\$ 1250-1750/oz and \$AUD:\$USD exchange rates used were between 0.73-0.78. The values reported reflect the 80% portion attributable to Evolution Mining

5. Group Copper Ore Reserve Competent Person (CP) Notes refer to 1. Michael Corbett; 2. Glen Williamson; 3. Sam Ervin; 4. Mark Flynn; 5. Sarah Webster

This information is extracted from the release titled 'Annual Mineral Resources and Ore Reserves Statement' dated 14 February 2024 and available to view at www.evolutionmining.com.au. The Company confirms that it is not aware of any new information or data that materially affects the information included in the release and that all material assumptions and parameters underpinning the estimates in the release continue to apply and have not materially changed. The Company confirms that the form and context in which the Competent Persons' findings are presented have not been materially modified from the Reports



Evolution
MINING