



Building a Global Uranium Company

Corporate Update

**Don't underestimate the supply challenge
with a strongly growing nuclear demand**

Canaccord Genuity Global Metals & Mining Conference Conference

20-22 May 2025

John Borshoff – Managing Director/CEO
Andrew Mirco – Head of Business Development

DYL: ASX / NSX (Namibia)
DYLLF: OTCQX



www.deeptyellow.com.au

Disclaimer

This presentation has been prepared by Deep Yellow Limited ABN 97 006 391 948 (Company or Deep Yellow) for general information purposes only. The presentation does not constitute a prospectus or equivalent document nor does it constitute financial product or investment advice. It does not take into account the investment objectives, financial situation or particular needs of any investor.

The presentation is not and should not be considered as an offer or invitation to subscribe for or purchase any securities in the Company, or as an inducement to make an offer or invitation with respect to those securities. No agreement to subscribe for securities in the Company will be entered into on the basis of this presentation.

The presentation has been prepared by the Company based on information available to it. Due care and attention has been taken in the preparation of this presentation, however the information contained in this presentation (other than as specifically stated) has not been independently verified for the Company or their respective directors and officers, nor has it been audited. Accordingly, the Company does not warrant or represent that the information contained in this presentation is accurate or complete. To the fullest extent permitted by law, no liability, however arising, will be accepted by the Company, or their respective subsidiaries, directors, officers or advisers, for the fairness, accuracy or completeness of the information contained in the presentation. No responsibility or liability is assumed by the Company or their respective subsidiaries, directors, officers or advisers for updating any information in this document or to inform any recipient of any new or more accurate information or any errors of mis-descriptions of which the Company or any of its respective directors, officers or advisers may become aware.

Financial Information

All dollar values are in Australian dollars (A\$ or AUD) unless otherwise stated. Amounts, totals and change percentages are calculated on whole numbers and not the rounded amounts presented. This presentation includes certain historical financial information extracted from audited consolidated financial statements and information released to ASX (collectively, the Historical Financial Information). The Historical Financial Information is presented in an abbreviated form insofar as it does not include all the presentation and disclosures, statements or comparative information as required by the Australian Accounting Standards (AAS) and other mandatory professional reporting requirements applicable to general purpose financial reports prepared in accordance with the Corporations Act.

Past Performance

Past performance metrics and figures (including past share price performance of the Company), as well as pro forma financial information, included in this Presentation are given for illustrative purposes only and should not be relied upon as (and is not) an indication of the Company or any other party's views on the Company's future financial performance or condition or prospects. Investors should note that past performance of the Company, including in relation to the historical trading price of the Company's shares, mineral resources, costs and other historical financial information cannot be relied upon as an indicator of (and provides no guidance, assurance or guarantee as to) future performance, including the future trading price of shares in the Company. The historical information included in this Presentation is, or is based on, information that has previously been released to the market.

Forward Looking Statements

This presentation contains "forward-looking information" that is based on the Company's expectations, estimates and projections as of the date on which the statements were made. This forward-looking information includes, among other things, statements with respect to the pre-feasibility and any feasibility studies, the Company's business strategy, plan, development, objectives, performance, outlook, growth, cash flow, projections, targets and expectations, mineral resources, results of exploration and related expenses. Generally, this forward-looking information can be identified by the use of forward-looking terminology such as 'outlook', 'anticipate', 'project', 'target', 'likely', 'believe', 'estimate', 'expect', 'intend', 'may', 'would', 'could', 'should', 'scheduled', 'will', 'plan', 'forecast', 'evolve' and similar expressions. Persons reading this presentation are cautioned that such statements are only predictions, and that the Company's actual future results or performance may be materially different. There can be no assurance that actual outcomes will not differ materially from forward-looking statements. Forward-looking information is subject to known and unknown risks, uncertainties and other factors that may cause the Company's actual results, level of activity, performance or achievements to be materially different from those expressed or implied by such forward-looking information. Forward-looking information is developed based on assumptions about such risks, uncertainties and other factors which are subject to change, including but not limited to general business, economic, competitive, political and social uncertainties; the actual results of current exploration activities; conclusions of economic evaluations; changes in project parameters as plans continue to be refined; future prices of uranium; possible variations of ore grade or recovery rates; failure of plant, equipment or processes to operate as anticipated; accident, labour disputes and other risks of the mining industry; and delays in obtaining governmental approvals or financing or in the completion of development or construction activities.



01

Nuclear is Critical for a Clean and Secure Energy Future

Strong Global Nuclear Power Reactor Growth

Status 1 May 2025¹

Proposed Reactors

316

Reactors Planned

China (40); Russia (23);
India (12); Poland (3);
Others (21)

99

Nuclear Reactors Globally

440

US (94); France (57); China (58)
Russia (36); Japan (33); India (24);
Korea (26); Ukraine (15);
Canada (17); Other (80)

Reactors Under Construction

66

China (30); India Turkey
Russia Korea & Egypt (23);
Others (13)

TRIPLE NUCLEAR FLEET BY 2060

SUPPORTING ANNOUNCEMENTS

CHINA: 400GW by 2060 (18.2% nuclear) – **7x** increase (CGNC Chairman April '23)
US: 300GW by 2050 – **3x** increase (DOE March '23) – Reaffirmed October '24

Uranium Demand and Supply Equation – A Total Mismatch

NUCLEAR DEMAND – over past 18 months

DEMAND ABSOLUTELY BOOMING



- **China** – maintaining strong growth projection
- **EU** – overwhelming support
- **India** – expected to be third largest global economy by 2027 – nuclear energy integral part of growth
- **SE Asia** – major turnaround
- **North America** – an awakened giant
- **Middle East** – pursuing nuclear with intent
- **Data Centres/AI** – astonishing growth needing immediate additional power with preference for nuclear required

URANIUM SUPPLY – over the past 18 months

SUPPLY ABSOLUTELY IN DOLDRUMS



- Supply sector has been in decline for over a decade
 - now unprepared and highly under-capitalised
 - talent drain across the sector will create difficulties
- Kazatomprom appears in trouble
- Cameco unwilling to start greenfield projects at current term prices
- Mothballed operations starting up are only replacing diminishing underfeed material
- Future supply growth totally dependent on greenfield projects
 - few shovel-ready projects of significance available



**THE BIG PICTURE THAT UTILITIES SIMPLY DON'T GET (YET!) – AN UNSUSTAINABLE SITUATION.
URANIUM PRICE MUST INCREASE DRAMATICALLY TO ACHIEVE EVENTUAL RE-BALANCE**



***Deep Yellow with proven history of its team is one of the few developers who able to
provide new production and security of supply with geographic diversity***

MAGNITUDE OF THE SUPPLY PROBLEM

Supply needs 2025 to 2100

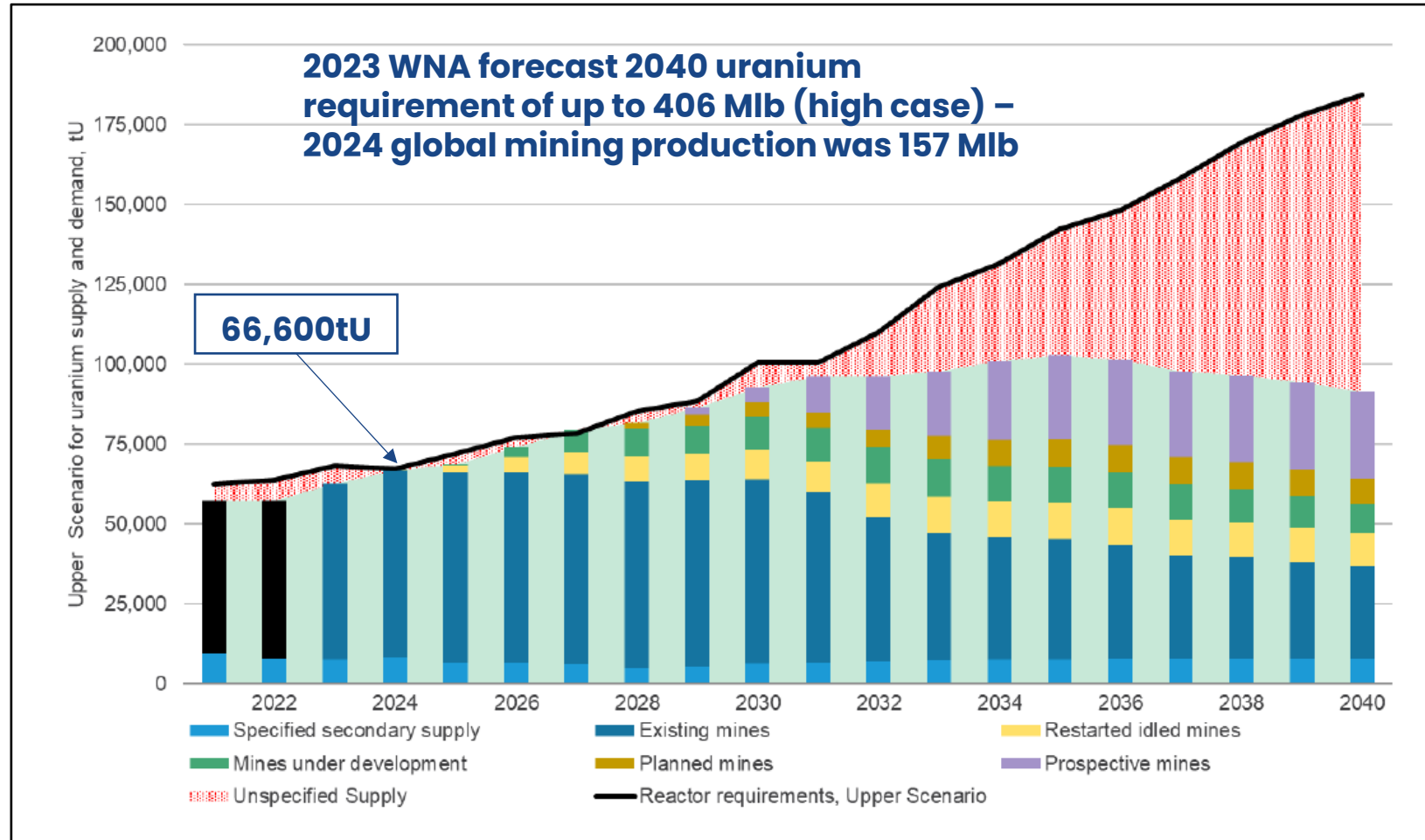
2025	180 Mlb pa (150 Mlb pa from mining)*
2040	300 Mlb pa (290 Mlb pa from mining) – UxC projects 366 ¹ Mlb
2060	500 Mlb pa (all mining)*
2100	800 Mlb pa*

**Orano presentation Global Uranium Conference Adelaide 23 October 2024*

- Huge challenges ahead for the supply sector to achieve the near impossible
- The impending supply imbalance will identify itself quickly when it occurs and in a dramatic fashion
- Very few thinking ahead of 2040 therefore black hole exists beyond this period in terms of supply

Supply Under Major Pressure

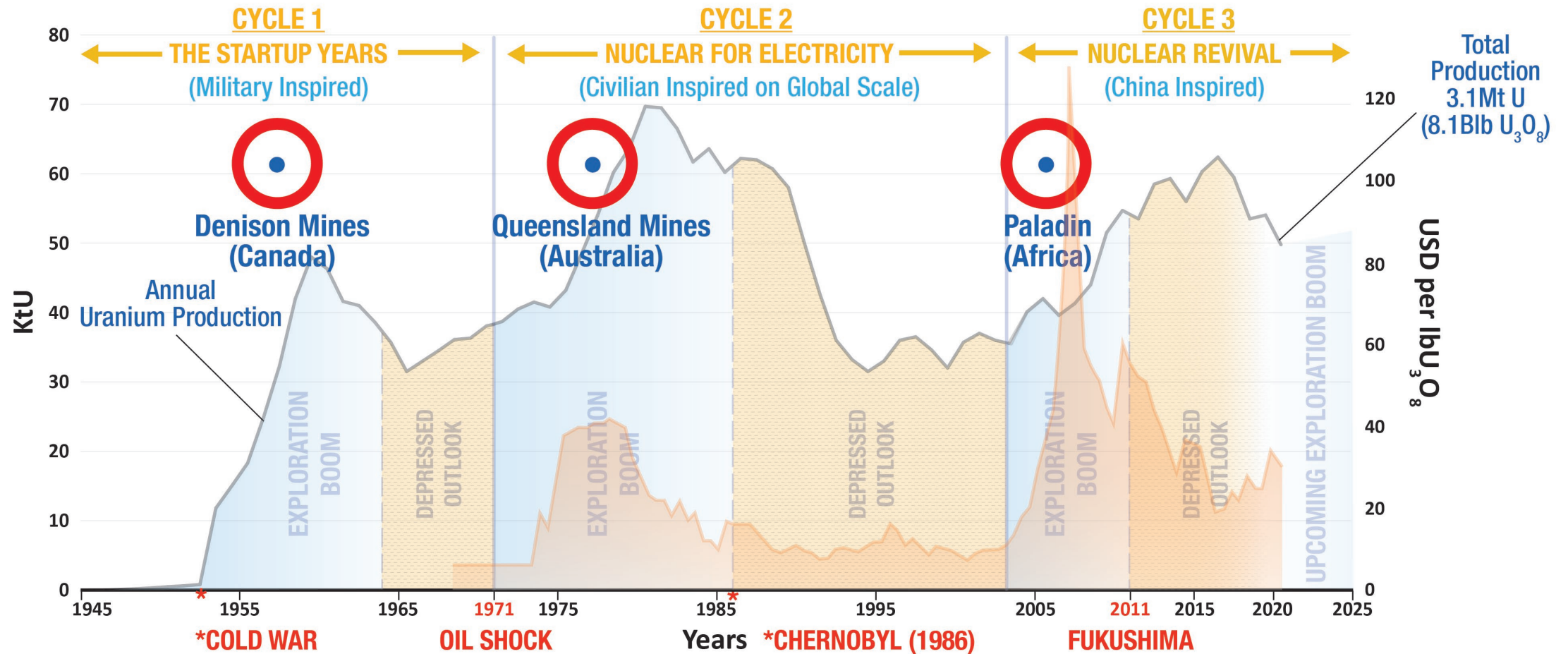
Uranium Price Primed for Recovery



Source: World Nuclear Association (The Nuclear Fuel Report 2023)

- New reactor build to cause huge supply challenge – excluding SMR and AI demand
- No new production – even when Spot Price ranged US\$95-US\$106/lb still no greenfield start-ups announced
- UxC “The Era of Inventory Overhang is Over”
- Russia/Kazakhstan/Niger present supply growth uncertainty
- Diversity, security, longevity of supply and achieving increased production to meet new demand are key issues to resolve

Only three Juniors outside US achieved production from conventional mines in the 75 Year history of nuclear to present day



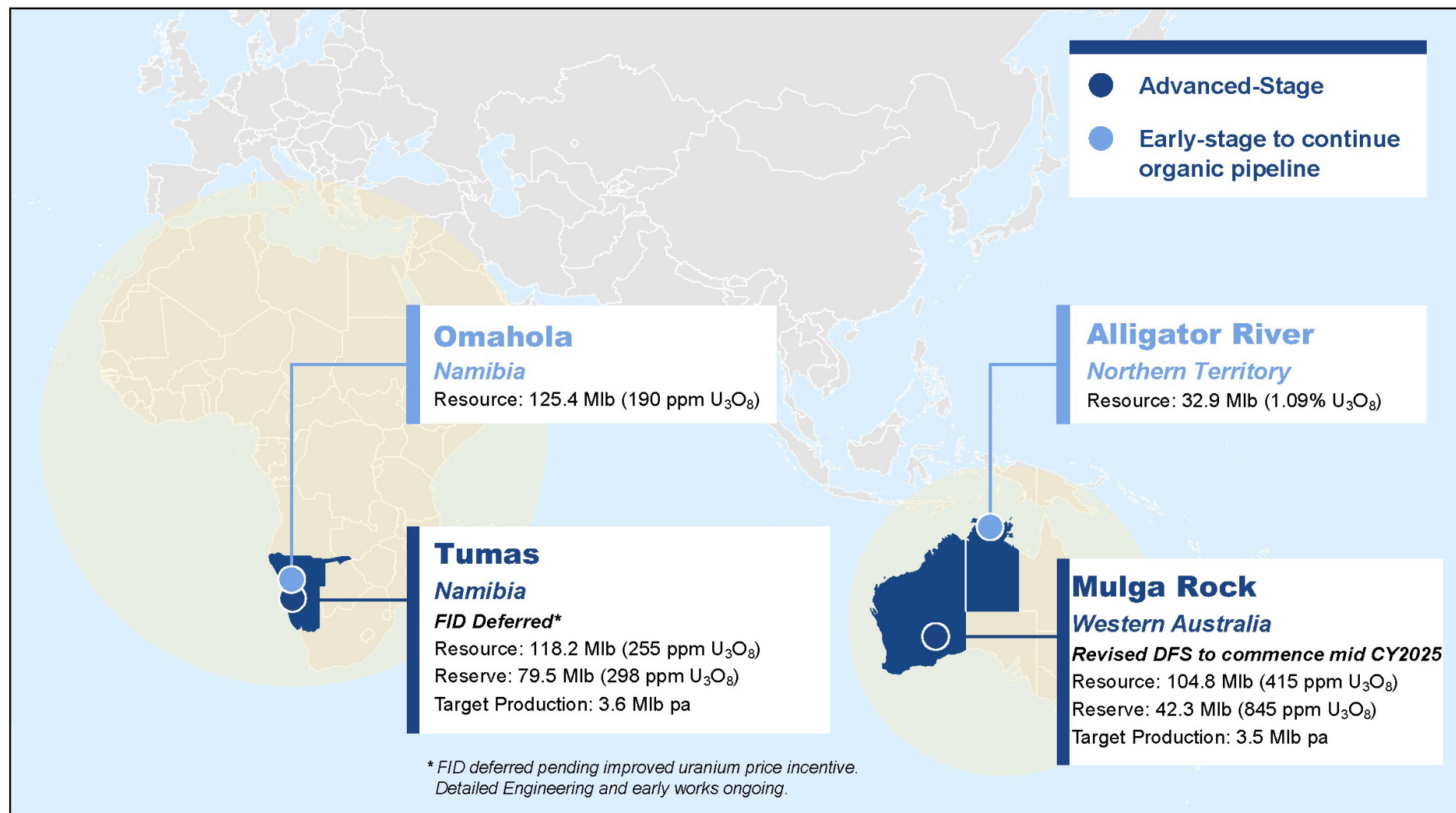


02

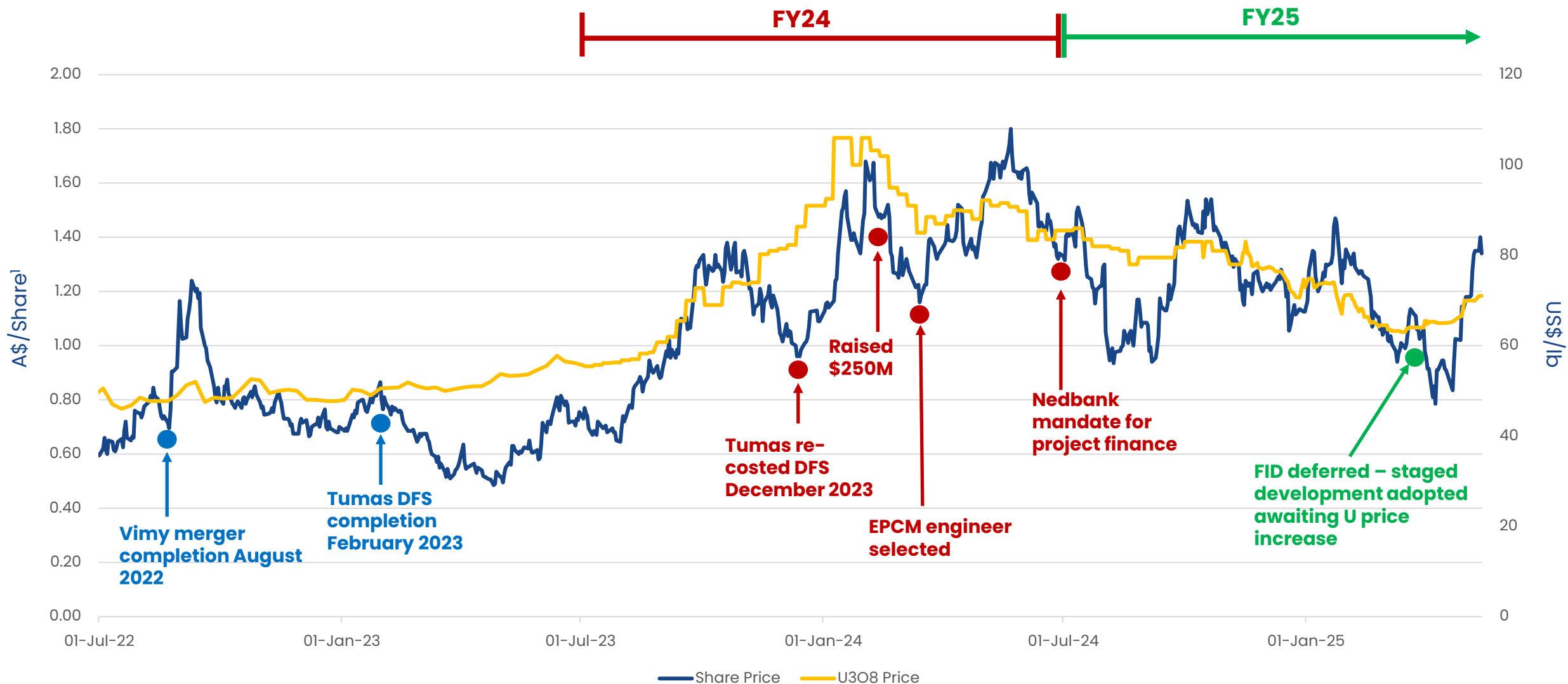
Deep Yellow – Well Positioned

Globally Diversified with Two Advanced, Long-Life Projects

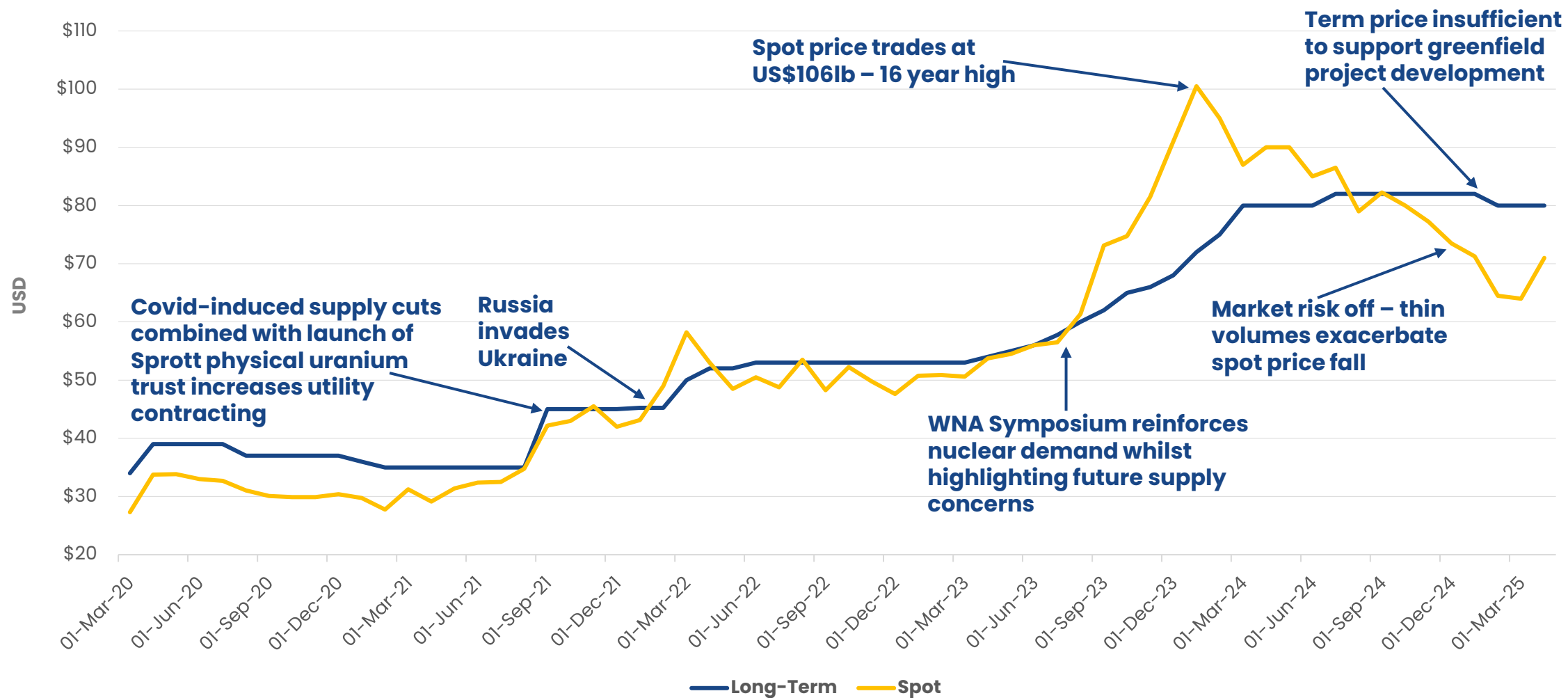
- Project portfolio provides diversity by asset, stage of development and geographic location
- One of the largest uranium resource bases of any ASX-listed company **(430 Mlb)**
- Uniquely positioned as one of the few uranium companies globally able to execute to development and production, with credible multi-mine asset exposure



A Top 10 Performer in the ASX200 for FY24



Long-Term Contract Price vs Spot Price



Structural Deficit Unavoidable even in early/mid-term

2030 Demand/Supply Forecast¹

Global Uranium Requirements → **190–200 Mlb**

Total Production → **184 Mlb**

Existing Production

New Production

142 Mlb

42 Mlb



Assumes **25 NEW Projects** to commence operating within the next 5 years!

Future Supply Facts – Pre & Post 2030

New Supply

- Majority of new operations <2 Mlb pa
- Uranium price does not warrant greenfield development
- Technical risks underestimated, including handful of new large-scale projects

Existing Supply

- Kazak supply materially declines over the next decade
- Existing large-scale mines potentially cease production or reduce production – Cigar Lake, Rossing

An impossible task to achieve by 2030 and materially more difficult beyond 2030

Best Positioned Uranium Mid-Cap Company Globally



Globally Diverse

Two long-life advanced projects **located in two Tier-1 mining jurisdictions** – will provide diversity, security and longevity of supply – key requirements for offtakers, investors and lenders



Near Term Production

Positioned to deliver uranium in the near term – 2025 Tumas DFS confirmed financially robust at current U price. FID deferred due to insufficient price incentive for greenfield startup. Staged development adopted; production expected mid-2027



Proven Team

Highly experienced uranium team – extensive knowledge across development, operational lifecycle, offtake, environment and project finance. The Deep Yellow team builds long-life, Tier-1 uranium mines



Development Strategy

Two advanced projects developed sequentially – followed by either development of significant exploration pipeline and/or M&A



High Value Pipeline









Alligator River Project (100%), Northern Territory, covers 3,895km² and located in a world class uranium province. **Omahola Project** (100%), Namibia located in Alaskite Alley, an extension to the same geological trend of the Husab deposit

Uniquely Positioned with Best-in-Class Team

Capital Structure

Shares	972M
Market Cap ¹	~A\$900M to 1.7Bn
Cash ²	A\$238M
Index	ASX200
Debt	Nil
Major Shareholders	<div>Board & Management 4.2%</div> <div>Paradise Investments 9.2%</div> <div>Sprott Inc. 10.36%</div> <div>Vanguard 5.0%</div>

Research Coverage

A Top 10 Performer in the ASX200 for FY24

A Highly Experienced Team with a Proven Track Record and over 500 Years of Combined Uranium Experience across the Company

Board & Senior Management

		Uranium Exp.(Yrs)
Chris Salisbury**	Non-Executive Chairman	12
John Borshoff*	CEO / MD	50
Gillian Swaby *	Executive Director	35
Craig Barnes*	CFO	6
Ed Becker*	Head of Exploration	44
Darryl Butcher*	Head of Project Development	37
Jim Morgan*	Head of Project Delivery - Tumas	20
Andrew Mirco*	Head of Business Development	15
Cathy Paxton*	Head of Sustainability	38
Dr Martin Ralph	Head of External Relations	35
Dr Alex Otto*	Group Chief Geologist	18
Xavier Moreau***	Australian Exploration Manager	27
Dr Katrin Kärner*	Exploration Manager	20
Martin Hirsch	Manager Resources	32
Dr JC Corbin*	Senior Geologist-Specialist	25
Dustin Garrow*	Head of Marketing	45



03

Flagship Tumas Project – Namibia

Tumas Project – Process Plant and Infrastructure



Significant Advancement of Tumas Project with 2025 DFS

FID Deferred – Staged Development

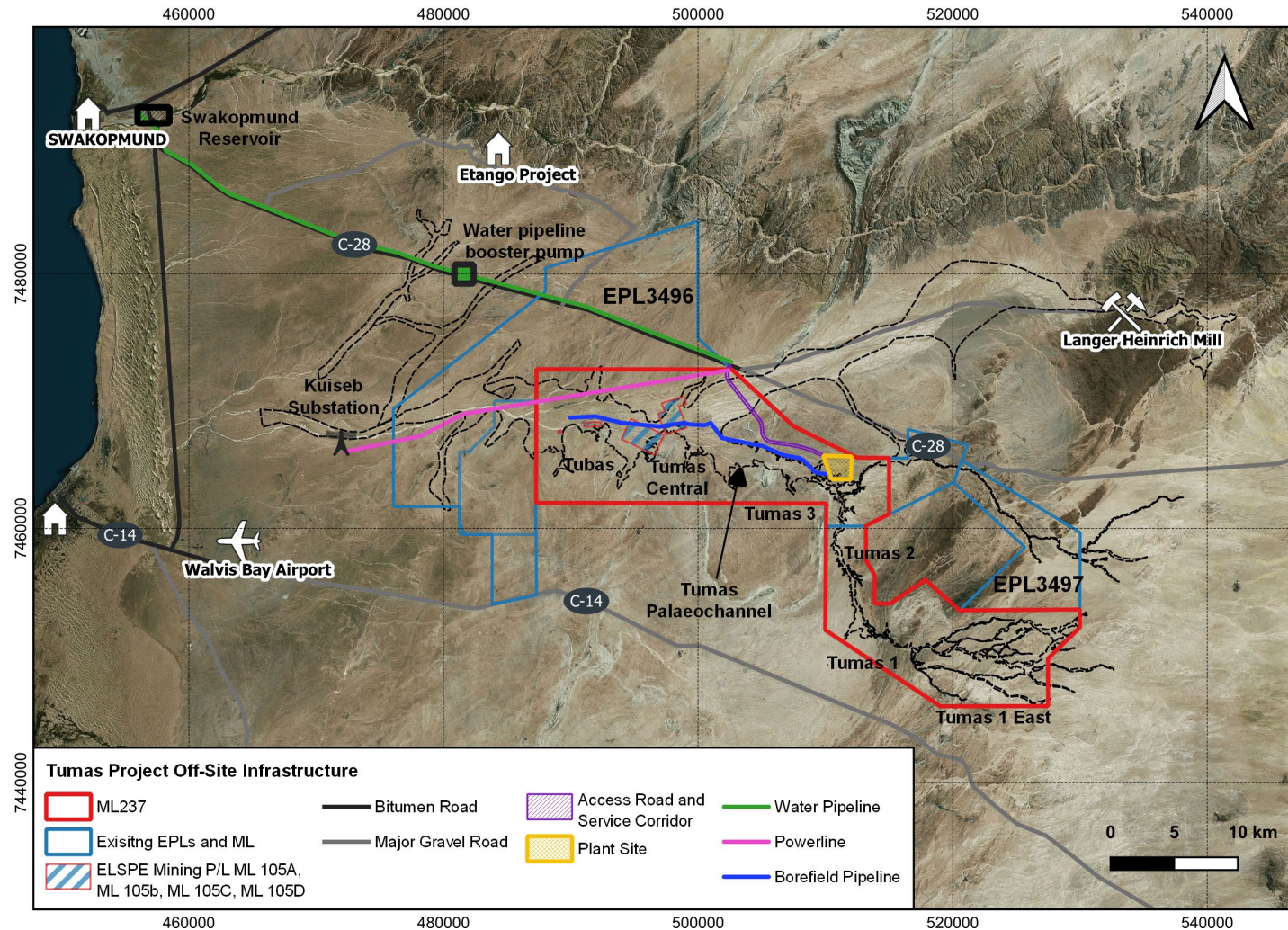
- Detailed engineering 2025 DFS announced with frozen scope/CAPEX/schedule established. Final Investment Decision (**FID**) delayed **until Term U price improves to sufficient level to incentivise greenfield project development**
- A new Ore Reserve Estimate with 30-year LOM (from 22.5 years) and an upgraded MRE
- Bank mandated for project financing and progressing well
- Project will be developed in a staged manner:
 - Continue detailed engineering
 - Expect project to be further derisked
 - Improved CAPEX, OPEX and schedule
 - Local infrastructure in progress

Early Works, Power and Water

- Complete construction access road
- Site communications
- Construction offices
- Temporary power
- Security
- Construction water supply
- Temporary power supply

Expect supply contracts for water and power to be in place in H1 CY25

Namibia – Excellent Infrastructure



Existing

- Walvis Bay Port – Class 7 shipping located 80 km from site
- Walvis Bay International Airport located 75 km from site

During Construction

- Infrastructure for mining fleet provided by mining contractor
- 13.5 km site access road connects to the C28 (sealed road)
- Connected to the Namibian grid through a purpose-built dedicated 25 km 220 kV power line
- Power line supplemented by a 20 MW solar farm installed and operated by a third party under an independent power producer arrangement
- Water via 3GL/yr 65 km pipeline

Tumas Project Analysis (US\$), Incorporating 2025 DFS Results

Key Commentary²

- Head grade of 298 ppm U₃O₈ (av)
- Annual production (max) of 3.6 Mlb pa
- Using vanadium price of US\$5.00/lb
- Latest, most up-to-date uranium project, with 2025 DFS

Project Financials (Ungeared): Real	Unit	82.50/lb	FAM 2*	110/lb
Project operating life	Years	30	30	30
U ₃ O ₈ Produced	Mlb	73	73	73
Gross revenue: total	\$M	6,146	7,714	8,160
Operating margin (EBITDA) LOM	\$M	2,963	4,480	4,911
Operating margin (EBITDA) annual average	\$M	100	152	166
Initial capital (incl. \$22.7M pre-prod operating costs) REAL	\$M	(474)	(474)	(474)
C1 cost (U ₃ O ₈ basis with V ₂ O ₅ by-product)	\$/lb	38.6	38.6	38.6
All-in Sustaining Cost (U ₃ O ₈ basis with V ₂ O ₅ by-product)	\$/lb	44.5	45.2	45.4
Project NPV (post tax)	\$M	577	972	1,153
Project IRR (post tax)	%	19	25	29

Tumas Project Timeline (calendar years)



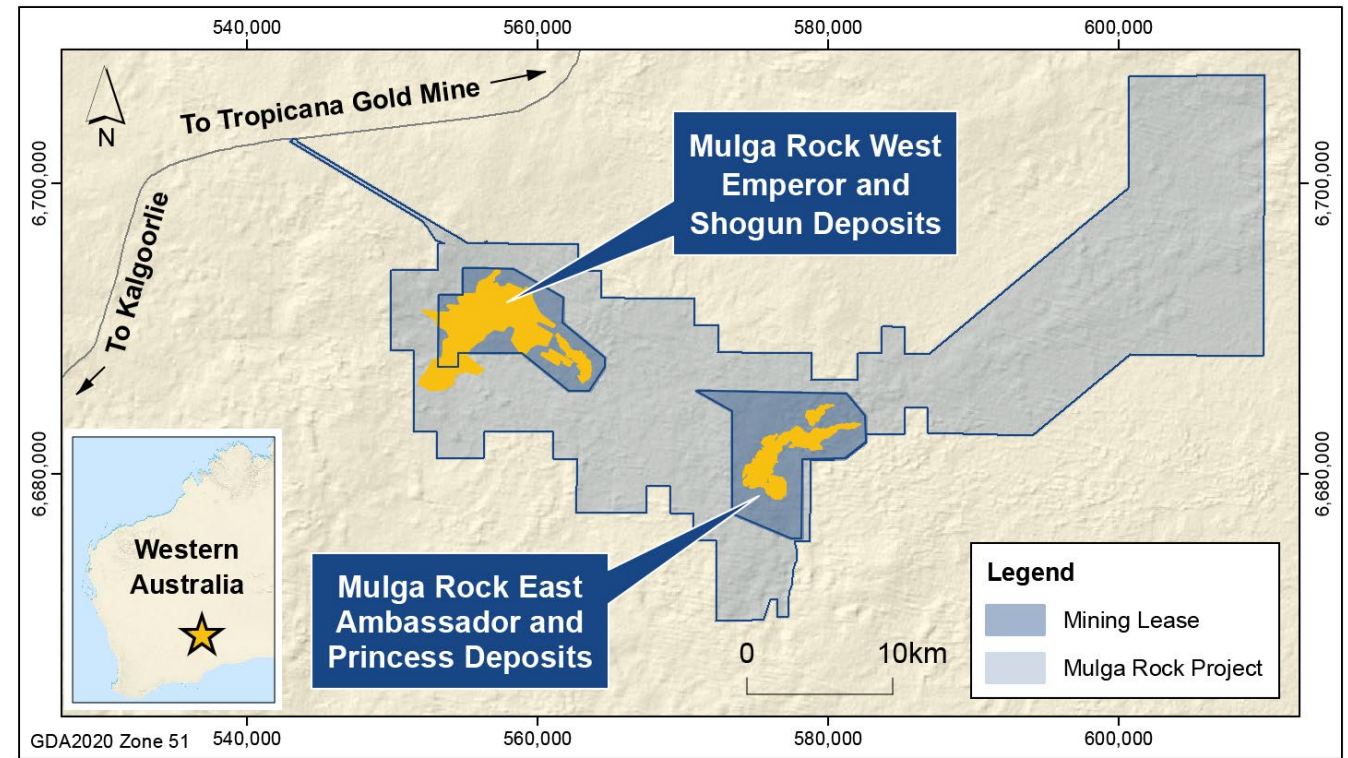


04

Looking Ahead – a Differentiated Company

Mulga Rock Project, Western Australia – 100% DYL

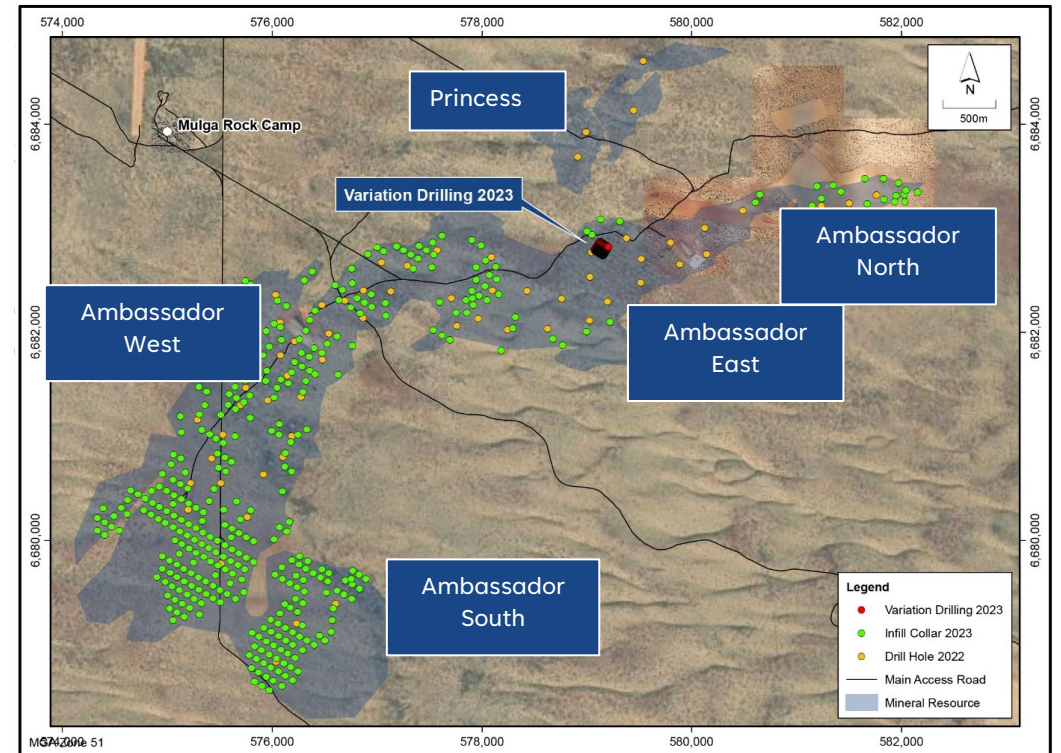
- Project acquired through Vimy Resources merger in August 2022
- Located in the Tier-1 mining jurisdiction of Western Australia, **with granted Mining Leases**
- Globally significant **Mineral Resource of 115.1 Mt @ 415 ppm for 104.8 Mlb U_3O_8** , positioning **Mulga Rock as one of the largest, undeveloped uranium projects in Australia¹**
- **Only uranium project in WA to reach “Substantial Commencement”**, opening pathway to development
- Significant project value upside identified additional to uranium **with critical minerals including Rare Earth Oxides¹**
- Ideal development timeline to capture upside in multiple commodities
- **Only WA project positioned to capture the coming upside in the uranium market**



Mulga Rock West Emperor and Shogun deposits provide potential to extend LOM beyond 30 years

Mulga Rock East – an Expanded Opportunity

- Extensive resource/reserve upgrade and ore variability drilling programs completed August 2023
- **Significant uranium, critical minerals (Cu, Ni, Co, Zn) and magnetic rare earth elements (notably Nd/Tb/Dy/Pr) resources identified**
- Updated MRE to Measured/Indicated status released to ASX 26 February 2024 with strong results
- Parallel metallurgical and hydrogeological workstreams well advanced and progressing as planned
 - Large diameter core drilling commenced for advancing resin pilot test-work



Class	PREVIOUS MRE			UPDATED MRE				
	Tonnes (Mt)	U ₃ O ₈		Tonnes (Mt)	U ₃ O ₈		U ₃ O ₈ Eq*	
		(ppm)	(Mlb)		(ppm)	(Mlb)	(ppm)	(Mlb Eq)
Total	38.2	673	56.7	81.2	400	71.2	590	105.3

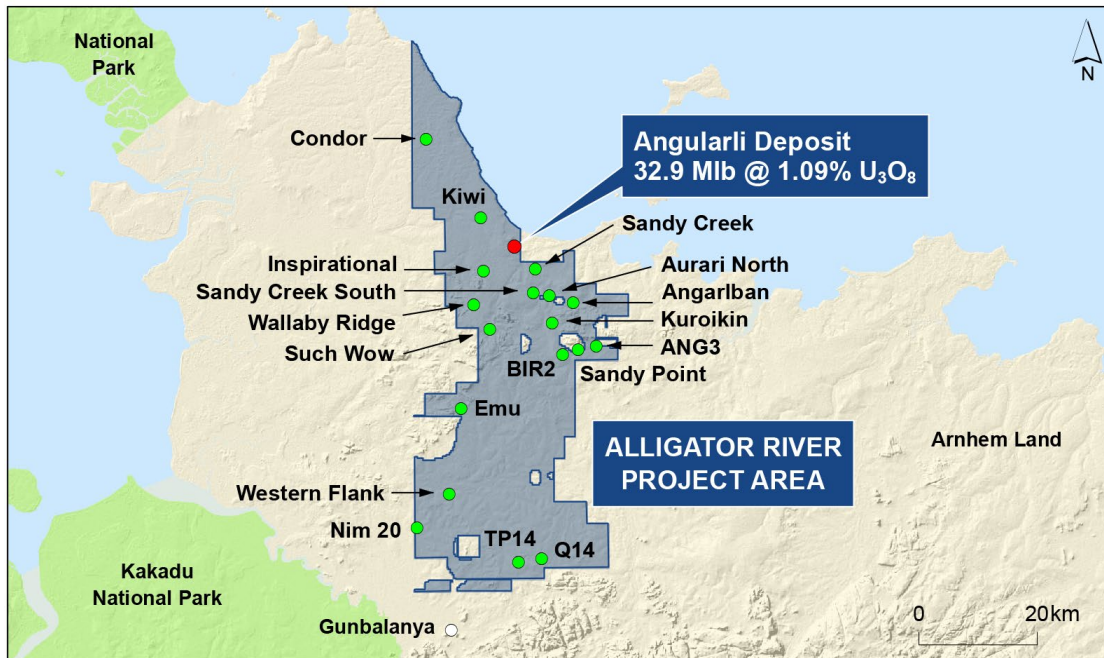
*U₃O₈ Equivalent (U₃O₈Eq) = U₃O₈ + 0.093xCo + 0.028xCu + 0.074xNi + 0.118xREO + 0.009xZn
Refer Appendix 1

Opportunity to develop Mulga Rock into a polymetallic operation, expanded 30 year + life of mine potential with significant increase to project value and strategic importance

Exceptional Exploration Upside

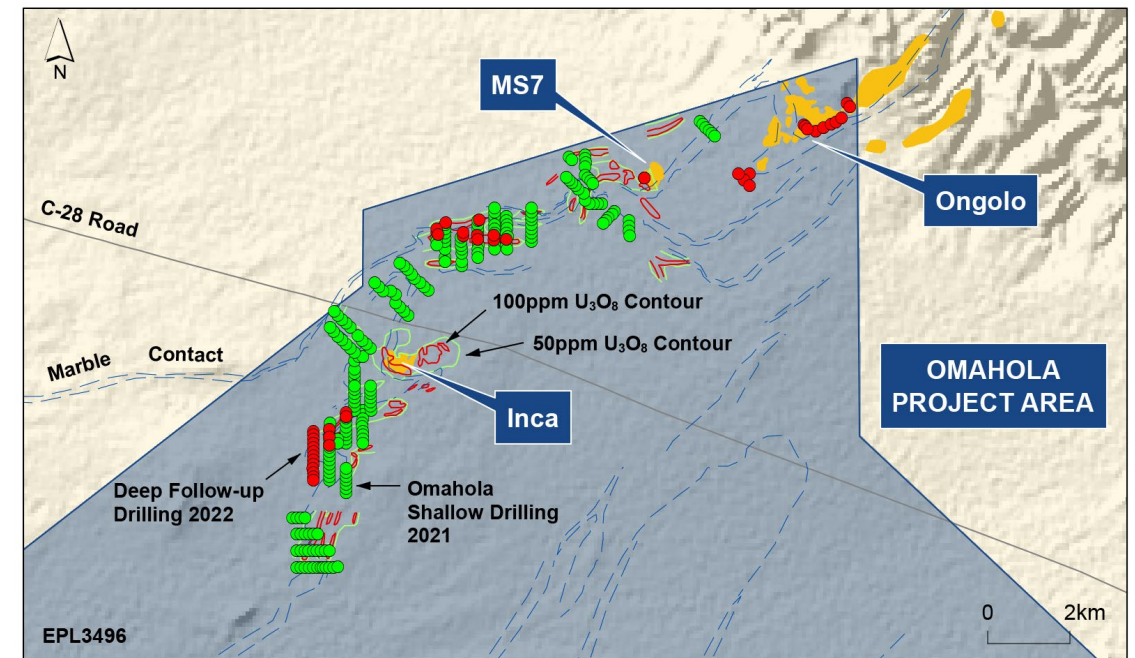
Alligator River Project, Northern Territory – 100%

- Located in the world-class uranium province of Alligator River, which hosts some of the highest-grade uranium deposits in the world (unconformity-related, Athabasca-style)
- Support from Traditional Owners
- Angularli Mineral Resource – 32.9 Mlb @ 1.09% U_3O_8
- Potential for discovery of large, >100 Mlb uranium deposits



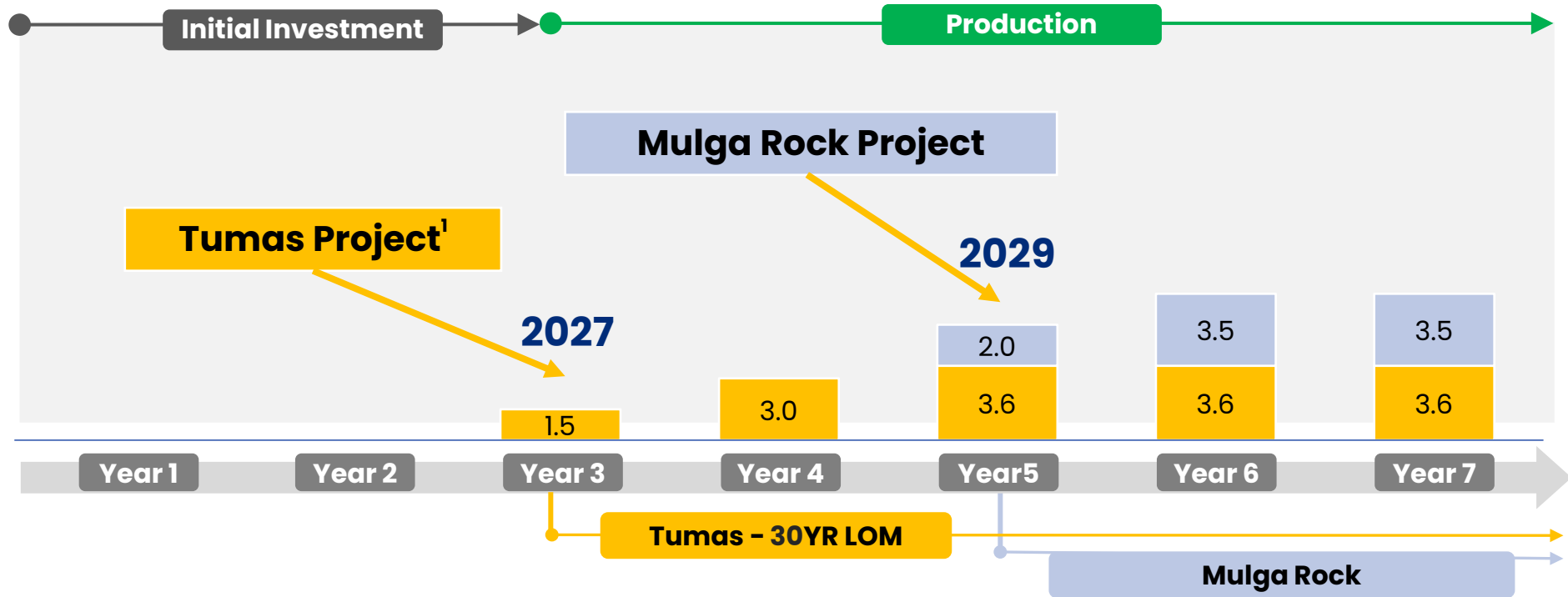
Omahola Basement Project, Namibia – 100%

- Measured, Indicated and Inferred Resource base of 125.4 Mlb at 190 ppm U_3O_8 across-Ongolo, MS7 and Inca deposits¹
- 35 km prospective zone, with strong potential for additional discoveries
- Shallow drilling program of ~200 holes for 7,100 m identified 3 highly-promising targets for follow up
- 50% of basement prospective zone remains to be tested



¹Refer to ASX announcement dated 4 November 2021

Two Substantial, Advanced Uranium Projects to Produce +7 Mlb



- ✓ **Tumas** – 2025 DFS completed, FID deferred , awaiting U price incentive – production likely by mid 2027
- ✓ **Mulga Rock** – Revised DFS completion Q3 CY26 based on new project parameters

Deep Yellow has two advanced projects, with development schedules identified, ready to capitalise on higher uranium prices

Key Workstreams and Anticipated Timing

TUMAS PROJECT Namibia	MULGA ROCK Western Australia	ALLIGATOR RIVER Northern Territory	M&A
<ul style="list-style-type: none"> • Q1 2025 – Final Investment Decision deferred. Advanced detailed engineering continues • Q2 2025 – Grade control completed for 6 yr mining plan • H2 2025 – Early works continues on non-process infrastructure • H2 2025 – Project finance proceeding • H2 2025 – Supply of water and power agreements finalised • Late 2025 – FID dependent on U price incentivisation 	<ul style="list-style-type: none"> • Q1 2025 – Completion of resin pilot testwork to optimise efficiency in critical mineral and rare earth element capture • Q2 2025 – Completion of Ambassador hydrogeological study • Q3 2025 – Completion of Revised mining study • Q3 2026 – Completion of revised DFS, incorporating new inputs for uranium and non-uranium value uplift 	<ul style="list-style-type: none"> • Q1 2025 – Geological surveys evaluation ongoing with focus on newly defined prospective corridors • Q2 2025 – Completion of 5-year exploration plan to unlock value • Q3 2025 – main drilling program commences testing prospective corridors 	<ul style="list-style-type: none"> • Ongoing – Continued focus on accretive consolidation to develop larger scale, with high quality mining assets
Target Production 2027	Target Production 2029	Target Production Early/Mid 2030	Target Production Late 2030

Best Positioned Pure-Play Uranium Investment



Deep Yellow is successfully establishing **the right platform at the right time ready to build greenfield projects when the U price is sufficient to incentivise greenfield project development**



Uranium market backdrop creates exceptional opportunities **in the post-Fukushima supply reconstruction era and taking advantage of an assured supply shortage further exacerbated by a bifurcated market**



Experienced Board and proven leadership supported by executive and technical teams **strong across all operational, financial and governance domains**



Strong financial position with A\$227M cash (A\$238M including cash equivalents) to initiate development of Tumas and pursue growth strategy



On a pathway to becoming a leading, reliable and long-term uranium producer, **able to provide production optionality and security of supply with geographic diversity**

Thank you

For Further Information

T +61 8 9286 6999

E info@deepyellow.com.au

W www.deepyellow.com.au

X [@deepyellowltd](https://twitter.com/deepyellowltd)

in [deep-yellow-limited](https://www.linkedin.com/company/deep-yellow-limited)

Appendix 1 – Uranium Equivalents

U₃O₈Eq grades are calculated as follows:

$$U_3O_8Eq = U_3O_8 + 0.093xCo + 0.028xCu + 0.074xNi + 0.118xREO + 0.009xZn$$

- Those factors were calculated using the assumptions presented in the table below and, based on testwork completed to date, the Company believes that all the critical minerals (Co, Cu, Ni, Zn, REO) can be recovered and a saleable product can be produced for each relevant element.
- Long-term price assumptions were derived using TradeTech® proprietary FAM2 supply/demand scenario (2023 Q3) for uranium oxide and cost curves-based (~ 75% percentile) or consensus analyses for cobalt, copper, nickel and zinc.
- Analysis of price variations for critical minerals indicates minimal change in the resulting U₃O₈Eq cut-off grade.
- Long-term (**LT**) prices for REO were assigned using independent long-term prices derived from a composite of industry specialists (based on individually modelled 20-year prices for individual REOs).
- Only Magnetic Rare Earth Oxides (**MREO**, or the sum of Dy₂O₃, Nd₂O₃, Pr₂O₃ and Tb₂O₃), which account for about 35% of the total REO by weight and approximately 90% by value at the MRP, were assigned a value for equivalent grade reporting purposes.

Mulga Rock East – Uranium Equivalent Grade Reporting Assumptions

Element	U ₃ O ₈	Co	Cu	Ni	REO	Zn
Price Assumption (US\$/t)	187,423	35,000/t	9,000	22,000	65,201 ¹	2,500
Recovery ²	93%	57%	68%	72%	55%	74%
Payability	98%	85%	85%	85%	60%	85%

¹ LT Price assumption of US\$65,201/t if expressed as the sum of MREO grades.

² Combined physical beneficiation and leach extraction.

JORC Mineral Resources – Namibia

Notes:

- Figures have been rounded and totals may reflect small rounding errors.
- XRF chemical analysis unless annotated otherwise.
- # Combined XRF Fusion Chemical Assays and eU₃O₈ values.
- ♦ eU₃O₈ - equivalent uranium grade as determined by downhole gamma logging.
- Where eU₃O₈ values are reported it relates to values attained from radiometrically logging boreholes.
- Gamma probes were originally calibrated at Pelindaba, South Africa in 2007. Recent calibrations were carried out at the Langer Heinrich Mine calibration facility in July 2018, September 2019, December 2020, January 2022, February 2023 and August 2024.
- Sensitivity checks are conducted by periodic re-logging of a test hole to confirm operations.
- During drilling, probes are checked daily against standard source.

1. ASX release 4 November 2021 'Omahola Basement Project Resource Upgrade to JORC 2012'.
2. ASX release 11 September 2024 'Tumas 3 Drilling Achieves Measured Resource Target'.
3. ASX release 2 September 2021 'Tumas Delivers Impressive Indicated Mineral Resource'.
4. ASX release 24 March 2014 'Tubas Sands Project – Resource Update'.
5. ASX release 28 February 2012 'TRS Project Resources Increased'.
6. ASX release 31 March 2023 'Aussinanis Project Resource Upgrade to JORC (2012)'.

Deposit	Category	Cut-off (ppm U ₃ O ₈)	Tonnes (M)	U ₃ O ₈ (ppm)	U ₃ O ₈ (t)	U ₃ O ₈ (Mlb)	Resource Categories (Mlb U ₃ O ₈)		
							Measured	Indicated	Inferred
BASEMENT MINERALISATION									
Omahola Project - JORC 2012 ¹									
INCA Deposit ♦	Indicated	100	21.4	260	5,600	12.3	-	12.3	-
INCA Deposit ♦	Inferred	100	15.2	290	4,400	9.7	-	-	9.7
Ongolo Deposit #	Measured	100	47.7	185	8,900	19.7	19.7	-	-
Ongolo Deposit #	Indicated	100	85.4	170	14,300	31.7	-	31.7	-
Ongolo Deposit #	Inferred	100	94.0	175	16,400	36.3	-	-	36.3
MS7 Deposit #	Measured	100	18.6	220	4,100	9.1	9.1	-	-
MS7 Deposit #	Indicated	100	7.2	185	1,300	2.9	-	2.9	-
MS7 Deposit #	Inferred	100	8.7	190	1,600	3.7	-	-	3.7
Omahola Project Sub-Total			298.2	190	56,500	125.4	28.8	46.9	49.7
CALCRETE MINERALISATION									
Tumas 3 Deposit - JORC 2012 ²									
Tumas 3 Deposit	Measured	100	33.3	300	10,210	22.5	22.5	-	-
Tumas 3 Deposit	Indicated	100	48.6	335	16,200	35.7	-	35.7	-
Tumas 3 Deposit	Inferred	100	16.1	170	2,770	6.1	-	-	6.1
Tumas 3 Deposits Total			98.5	295	29,180	64.3			
Tumas 1, 1 East and 2 Project - JORC 2012 ^{2,3}									
Tumas 1, 1 East and 2 Deposit ♦	Measured	100	35.2	205	7,270	16.0	16.0	-	-
Tumas 1, 1 East and 2 Deposit ♦	Indicated	100	55.2	230	12,640	27.9	-	27.9	-
Tumas 1, 1 East and 2 Deposit ♦	Inferred	100	21.2	215	4,530	10.0	-	-	10.0
Tumas 1, 1 East & 2 Deposits Total			111.6	220	24,430	53.9			
Sub-Total of Tumas 1, 1 East, 2 and 3			210.1	255	53,610	118.2	38.5	63.6	16.1
Tubas Red Sand Project - JORC 2012 ⁴									
Tubas Sand Deposit #	Indicated	100	10.0	185	1,900	4.1	-	4.1	-
Tubas Sand Deposit #	Inferred	100	24.0	165	3,900	8.6	-	-	8.6
Tubas Red Sand Project Total			34.0	170	5,800	12.7			
Tubas Calcrete Resource - JORC 2004 ⁵									
Tubas Calcrete Deposit	Inferred	100	7.4	375	2,765	6.1	-	-	6.1
Tubas Calcrete Total			7.4	375	2,765	6.1			
Aussinanis Project - JORC 2012 - DYL 85% ⁶									
Aussinanis Deposit ♦	Indicated	100	12.3	170	2,000	4.5	-	4.5	-
Aussinanis Deposit ♦	Inferred	100	62.1	170	10,700	23.6	-	-	23.6
Aussinanis Project Total			74.4	170	12,700	28.1			
Calcrete Projects Sub-Total			325.9	230	74,875	165.1	38.5	72.2	54.4
Grand Total Namibian Resources			624.1	210	131,475	290.5	67.3	119.1	104.1

Australian Mineral Resources



JORC Mineral Resources – Australia

Notes:

- Figures have been rounded and totals may reflect small rounding errors.
- XRF chemical analysis unless annotated otherwise.
- ♦ eU₃O₈ - equivalent uranium grade as determined by downhole gamma logging.
- # Combined XRF Fusion Chemical Assays and eU₃O₈ values.
- Where eU₃O₈ values are reported it relates to values attained from radiometrically logging boreholes.
- Gamma probes were calibrated at Pelindaba, South Africa, at the Langer Heinrich Mine calibration facility in Namibia and at the Australian facility in Adelaide.
- During drilling, probes are checked daily against standard source.

1. ASX release 3 July 2023 'Robust Resource Upgrade Delivered at Angularli'.
2. ASX release 26 February 2024 'Strong Resource Upgrade Drives Mulga Rock Value'.

Deposit	Category	Cut-off (ppm U ₃ O ₈)	Tonnes (M)	U ₃ O ₈ (ppm)	U ₃ O ₈ (t)	U ₃ O ₈ (Mlb)	Resource Categories (Mlb U ₃ O ₈)		
Measured							Indicated	Inferred	
NORTHERN TERRITORY									
Angularli Project – JORC 2012 ¹									
Angularli	Inferred	1,500	1.37	10,900	14,917	32.9	-	-	32.9
Angularli Project Sub-Total			1.37	10,900	14,917	32.9			32.9
WESTERN AUSTRALIA									
Mulga Rock Project – JORC 2012									
Ambassador	Measured	100	12.9	515	6,638	14.6	14.6	-	-
Ambassador	Indicated	100	52.2	365	19,077	42.1	-	42.1	-
Ambassador	Inferred	100	8.7	480	4,177	9.2	-	-	9.2
Princess	Indicated	100	5.0	405	2,015	4.4	-	4.4	-
Princess	Inferred	100	2.4	170	407	0.9	-	-	0.9
Mulga Rock East Total ²			81.2	400	32,314	71.2			
Shogun	Indicated	150	2.2	680	1,496	3.2	-	3.2	-
Shogun	Inferred	150	0.9	290	261	0.6	-	-	0.6
Emperor	Inferred	150	30.8	440	13,522	29.8	-	-	29.8
Mulga Rock West Total ²			33.9	450	15,279	33.6			
Mulga Rock Project Sub-Total			115.1	415	47,593	104.8	14.6	49.7	40.5
Grand Total Australian Resources			116.5	535	62,510	137.7	14.6	49.7	73.4
Grand Total Resources			740.6	262	193,985	428.2	82.0	168.8	177.5

Mulga Rock East – Critical Minerals

Notes:

- Figures may not add due to rounding.

3. ASX release 26 February 2024 'Strong Resource Upgrade Drives Mulga Rock Value'.

Deposit ³	Class	Tonnes (Mt)	Cu (ppm)	Cu	Class	Tonnes (Mt)	Cu (ppm)	Cu	Class	Tonnes (Mt)	Cu (ppm)
Princess	Indicated	5.0	810	4.0	1,270	6.3	500	2.5	305	1.5	175
Princess	Inferred	2.4	510	1.2	910	2.2	395	0.9	230	0.6	185
Ambassador	Measured	12.9	675	8.7	2,720	35.2	800	10.4	440	5.7	940
Ambassador	Indicated	52.2	495	25.8	1,400	73.1	785	41.0	465	24.4	605
Ambassador	Inferred	8.7	190	1.7	275	2.4	125	1.1	65	0.6	280
Total		81.2	510	41.4	1,465	119.1	690	55.9	405	32.7	585

Ore Reserves

JORC Ore Reserves – Namibia

Notes:

- Figures have been rounded and totals may reflect small rounding errors.

1. ASX release 18 December 2024;
2 Feb 2023 'Strong Results From Tumas Definitive Feasibility Study'.

Deposit	Category	Cut-off (ppm U ₃ O ₈)	Tonnes (M)	U ₃ O ₈ (ppm)	U ₃ O ₈ (t)	U ₃ O ₈ (Mlb)	Resource Categories (Mlb U ₃ O ₈)		
Measured							Indicated	Inferred	
NAMIBIA									
Tumas Project - JORC 2012 ¹									
Tumas 3	Proved	100	21.0	357	7,500	16.6	16.6		
Tumas 3	Probable	100	30.3	398	12,060	26.6		26.6	
Tumas 1 and 2	Proved	100	23.7	227	5,380	11.9	11.9		
Tumas 1 and 2	Probable	100	10.1	238	2,400	5.4		5.4	
Tumas 1 East	Probable	100	35.0	246	8,610	19.0		19.0	
Tumas Project Total		100	120.1	298	35,950	79.5	28.5	51.0	

JORC Ore Reserves – Australia

Notes:

2. ASX release 12 July 2017 'Significant Resource Update – Mulga Rock Cracks 90 Mlbs'.

Deposit	Category	Cut-off (ppm U ₃ O ₈)	Tonnes (M)	U ₃ O ₈ (ppm)	U ₃ O ₈ (t)	U ₃ O ₈ (Mlb)	Reserve Categories (Mlb U ₃ O ₈)		
Proved							Probable		
WESTERN AUSTRALIA									
Mulga Rock Project – JORC 2012 ²									
Ambassador	Proved	150	5.3	1,055	5,580	12.3	12.3		-
Ambassador	Probable	150	14.1	775	10,890	24.0	-		24.0
Princess	Proved	150	-	-	-	-	-		-
Princess	Probable	150	1.7	870	1,500	3.3	-		3.3
Mulga Rock East Total			21.1	850	17,970	39.6			
Shogun	Proved	150							
Shogun	Probable	150	1.6	760	1,225	2.7	-		2.7
Mulga Rock West Total			1.6	760	1,225	2.7			
Mulga Rock Project Sub-Total			22.7	845	19,195	42.3	12.3		30.0
Grand Total Ore Reserves			142.8	385	55,145	121.8	40.8		81.0