



Investor Presentation

Pursuing gold-antimony and base metals
discoveries in tier-1 mineral belts in Tasmania

ASX: AUH

May 2025



CAUTIONARY STATEMENTS

This presentation has been prepared by AustChina Holdings Limited “AustChina”. This document contains background information about AustChina current at the date of this presentation. The presentation is in summary form and does not purport to be all inclusive or complete. Recipients should conduct their own investigations and perform their own analysis forward-looking satisfy themselves as to the accuracy and completeness of the information, statements and opinions contained in this presentation. This presentation is for information purposes only. Neither this presentation nor the information contained in it constitutes an offer, invitation, solicitation or recommendation in relation to the purchase or sales of shares in any jurisdiction.

This presentation does not constitute investment advice and has been prepared without forward-looking the recipient’s investment objectives, financial circumstances or forward-looking and the opinions and recommendations in this presentation are not intended to represent recommendations of forward-looking. Recipients should seek professional advice when deciding if an investment is appropriate. All securities involve risks which include (among others) the risk of adverse or unanticipated market, financial or political developments. To the fullest extent permitted by law, AustChina, its officers, employees, agents and advisors do not make any representation or warranty, express or implied, as to the currency, accuracy, reliability or completeness of any information, statements, opinions, estimates, forecasts or other representations contained in this presentation. No responsibility for any errors or omissions from this presentation arising out of negligence or otherwise are accepted.

This presentation may include forward-looking statements. Forward-looking statements are only predictions and are subject to risks, uncertainties and assumptions which are outside the control of AustChina. Actual values, results or events may be materially different to those expressed or implied in this presentation. Given these uncertainties, recipients are cautioned not to place reliance on forward looking statements. Any forward-looking statements in this presentation speak only at the date of issue of this presentation. Subject to any continuing obligations under applicable law, AustChina does not undertake any obligation to update or revise any information or any of the forward-looking statements in this presentation or any changes in events, conditions, or circumstances on which any such forward looking statement is based.

Competent Persons Statement

The information in this announcement that relates to Exploration Results was compiled by Ian Neilson, who is a Member of the Australian Institute of Geosciences and was a major shareholder of Penwortham Exploration Pty Ltd, who were the vendors to the projects. Mr Neilson is providing geological support to the Company on the project areas. Mr Neilson has sufficient experience which is relevant to the style of mineralisation and type of deposit under consideration and to the activity being undertaken to qualify as a Competent Person as defined in the 2012 Edition of the 'Australasian Code for Reporting of Exploration Results, Mineral Resources and Ore Reserves'. Mr Neilson consents to the inclusion in the announcement of the matters based on the information in the form and context in which it appears. The Company confirms that it is not aware of any new information or data that materially affects the information in the original reports, and that the form and context in which the Competent Person’s findings are presented have not been materially modified from the original report.

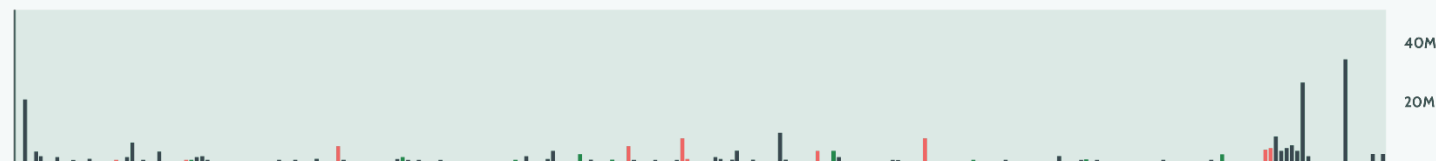
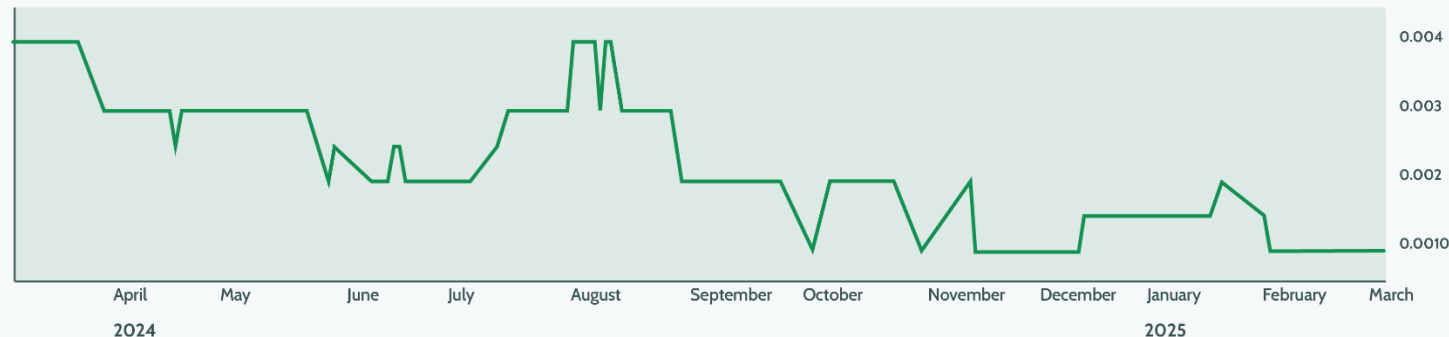
CORPORATE OVERVIEW

CAPITALISATION DATA

Share Price	A\$	\$0.001
Issued Capital		3.02 billion
Market Capitalisation	A\$M	3.00
Cash	A\$M	\$350,000
Enterprise Value	A\$M	3.0 million

MAJOR SHAREHOLDERS

HSBC Custody Nominees (Australia) Limited	30.65%
Blackcro Investments Pty Ltd	12.66%
ProGreen Singapore Pte Ltd	9.09%
KAMS Brother Holdings Limited	4.23%
Mylonite Pty Ltd	2.98%
GL England Pty Ltd	2.97%



BOARD & MANAGEMENT

Board

Non-Executive Chairman

Anthony Chan

Non-Executive Directors

Daniel Chan, Mena Habib, George Lam, Andrew Macintosh,
Peter Tsang, Jerko Zuvela

Management

Chief Executive Officer

Andrew Fogg

Chief Operating Officer

Bruce Patrick

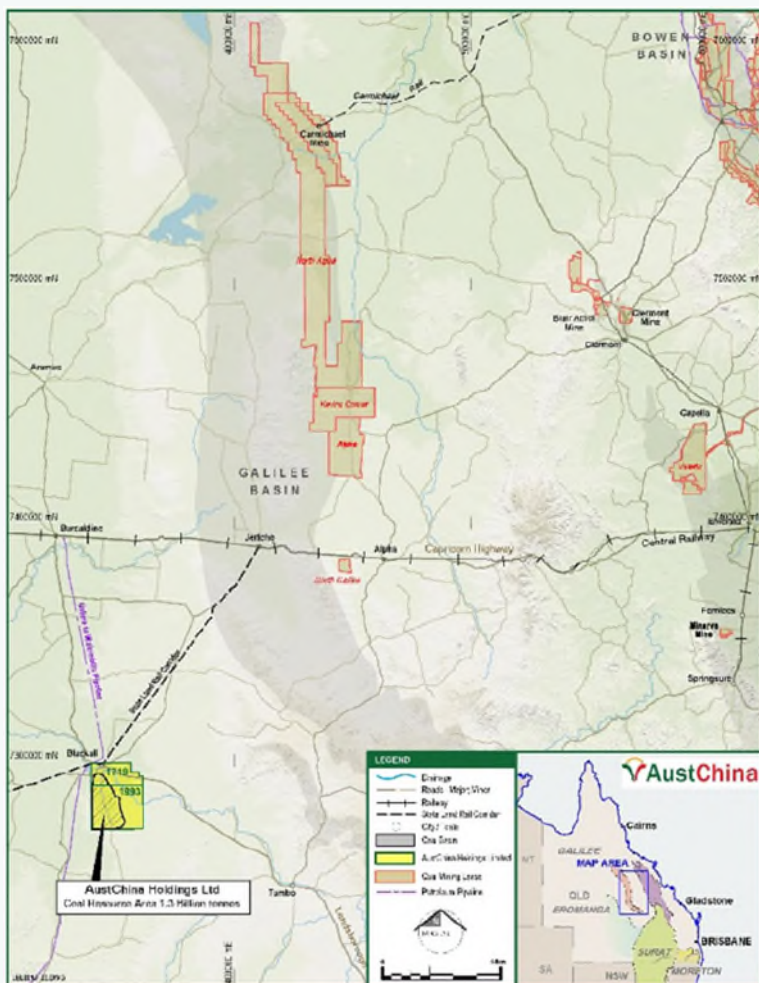
Company Secretary

Suzanne Yeates

OVERVIEW

- ✓ ASX Listed Company (**ASX: AUH**) – governance in accordance with Australian corporate laws and standards
- ✓ **Thermal Coal project (Blackall)** - Holds coal exploration portfolio in Queensland, Australia including JORC Inferred Coal Resource of 1.275 billion tonnes of thermal coal which includes 55m tonnes of Indicated Resource.
- ✓ **Gold-Antimony–Base Metals (Tasmania)** – Granted Exploration Licence EL 16/2022 and Application EL 6/2021 targeting gold, antimony, copper and base metals (zinc and lead)
- ✓ **Copper Investment** – Shareholding in Revolver Resources Limited (ASX:RRR) with copper mineralisation being the primary target at its Dianne Mine and Osprey projects.
- ✓ Open to new opportunities both in resources and in other commercial areas through Joint Ventures or Investment

BLACKALL COAL PROJECT



EPC 1993 & EPC 1719

- 1.275 billion tonnes of thermal coal which includes JORC Inferred Resource and 55m tonnes as an Indicated Resource.
- Over 800Mt of the resources is estimated at less than 50 metres depth.

Total Coal Resources (Inclusive of Resources modified to produce Reserves) 26 February 2024											
Mining Method	Depth Interval (m)	Measured (A)			Indicated (B)			(A+B)	Inferred		
		Tonnes (Mt)	Quality		Tonnes (Mt)	Quality		Tonnes (Mt)	Tonnes (Mt)	Quality	
			CV (kcal/kg)	Ash (%)		CV (kcal/kg)	Ash (%)			CV (kcal/kg)	Ash (%)
OC	0 – 50	-			47.4	3590	22.8	47.4	761	3820	19.7
OC	50 – 100	-			7.2	3920	18.5	7.2	416	3900	19.1
OC	100 – 150	-			-	-	-	-	43	4270	15.3
Total		-	-	-	54.7	3640	22.2	54.7	1220	3850	19.5

AUH ASX announcement 27 February 2024: “Coal Resource Upgrade for the Blackall Coal Project”

NEW TASMANIAN INVESTMENT

AustChina has acquired a portfolio of Gold-Antimony and Base Metals exploration assets in Tasmania¹

- ✓ **New project acquisition allows AUH to expand into high-demand commodities – gold, antimony and copper – in active, Tier-1 mineral belts**
 - Sulphide Creek Gold-Antimony Project; and
 - Mersey VMS Base Metals (including Copper and Gold) Project.
- ✓ **Historical high-grade exploration results** – opportunity to apply modern exploration techniques to deliver near-term value
- ✓ **Targeted, value-accretive field work to commence immediately** – maiden drilling program planned within six months at Sulphide Creek
- ✓ **Project (subject to exploration results and requisite approvals)**
- ✓ **Focused board and highly experienced technical team committed to advancing projects and delivering shareholder value**
- ✓ **Highly supportive government jurisdiction for minerals exploration**
 - Tasmania's Critical Minerals Strategy fosters a sustainable industry by leveraging geology, infrastructure, clean energy, and responsible extraction for a secure, cleaner future;
 - Tasmanian government's Exploration Drilling Grant Initiative (EDGI) provides funding for exploration drilling;
 - A focus on developing production and processing capabilities within Tasmania to further add value

¹ ASX announcements; 4 February, 25 February and 4 March 2025

PROJECT LOCATIONS

Quality exploration assets in world-class exploration precinct in Tasmania

- High-grade **Sulphide Creek Gold-Antimony Project** in the Tier-1 Queenstown mining district;
- **Mersey VMS Base Metals Project** including Copper and Gold.

Historical Mines and exploration in area date back to early 20th century - **highlight prolonged prospectivity of region.**

NQ MINERALS
Hellyer
(Zn, Pb, Au, Ag, Cu)

NQ MINERALS
Hellyer Tailings
(Zn, Pb, Au, Ag, Cu)

BASS METALS
Que River
(Zn, Pb, Au, Ag, Cu)

MOINA GOLD
Mt Charter
(Zn, Pb, Au)

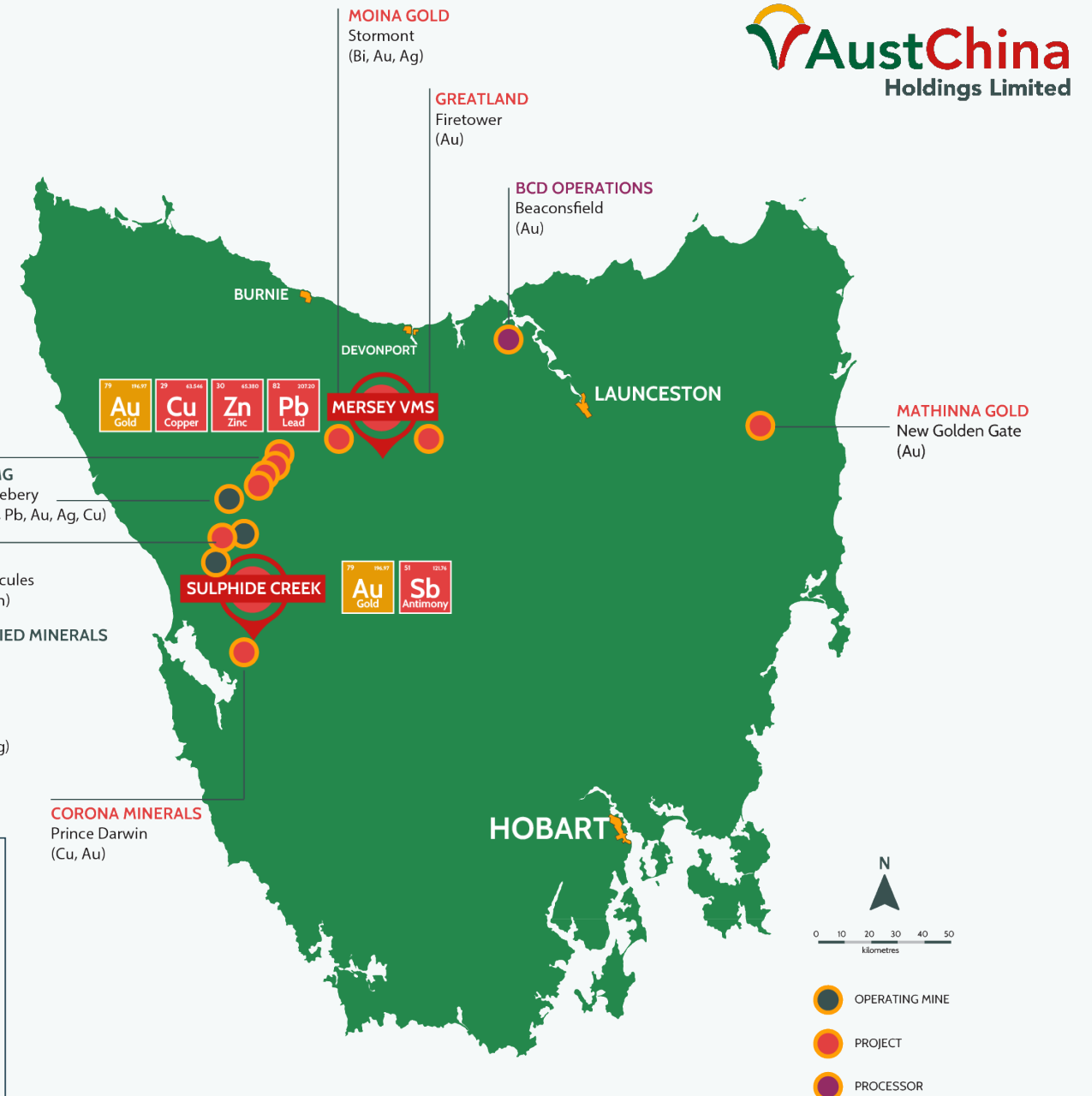
MMG
Rosebery
(Zn, Pb, Au, Ag, Cu)

MMG
South Hercules
(Au, Ag, Zn)

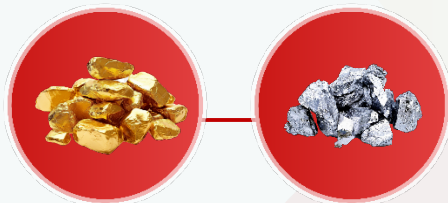
DIVERSIFIED MINERALS
Henty
(Au, Ag)

CMT
Mt Lyell
(Cu, Au, Ag)

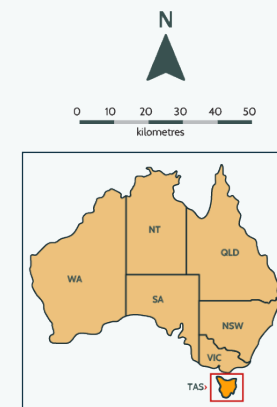
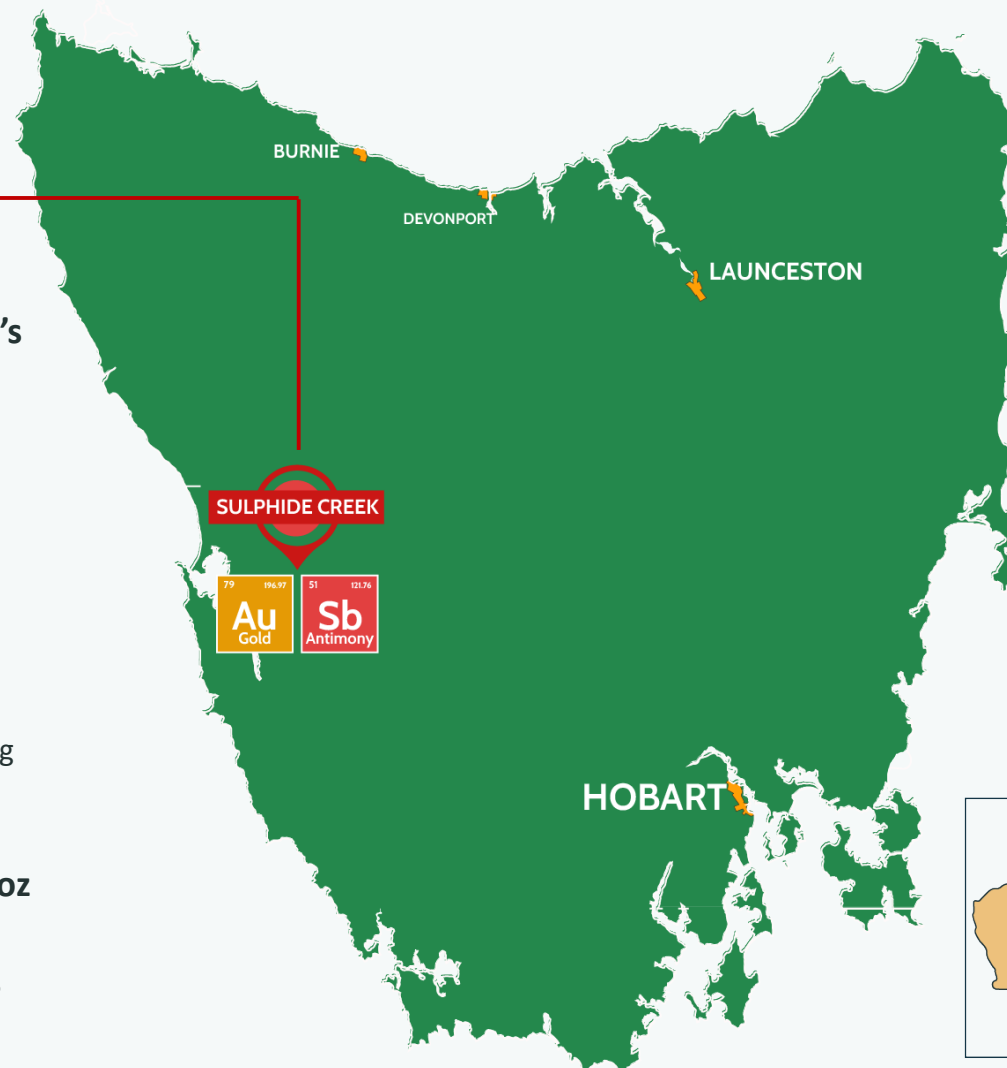
CORONA MINERALS
Prince Darwin
(Cu, Au)



SULPHIDE CREEK GOLD-ANTIMONY PROJECT^{1,2}



- Sulphide Creek Gold-Antimony Project (EL16/2022) is located in Tasmania's worldclass Queenstown mining district
- Multiple gold targets along 6km of strike, tracking a major structure which has been under-explored to date
 - Historical workings contain ½ ounce Au grades
 - Antimony workings with notable 60-70% Sb high grades
- New mineralisation model to explore and develop²;
 - with structural evidence of potential orogenic style gold mineralisation (e.g. Fosterville, Victorian goldfields) and
 - large mineralized system in adjacent tenure with Mt Lyell Cu-Au Deposit, showing fertility of area
 - AUH plans to drill high priority Coupon Au target
- Historic exploration modelling suggest **potential for a 500,000 to 1 million oz Au system** at Sulphide Creek Project³
- Opportunity to develop **compelling model for high grade antimony targets** with modern exploration techniques, linked to gold system



¹AUH ASX announcement 4 Feb 2025; ²AUH ASX announcement 7 May 2025; ³Shree Minerals Limited ASX announcement 16 Feb 2011

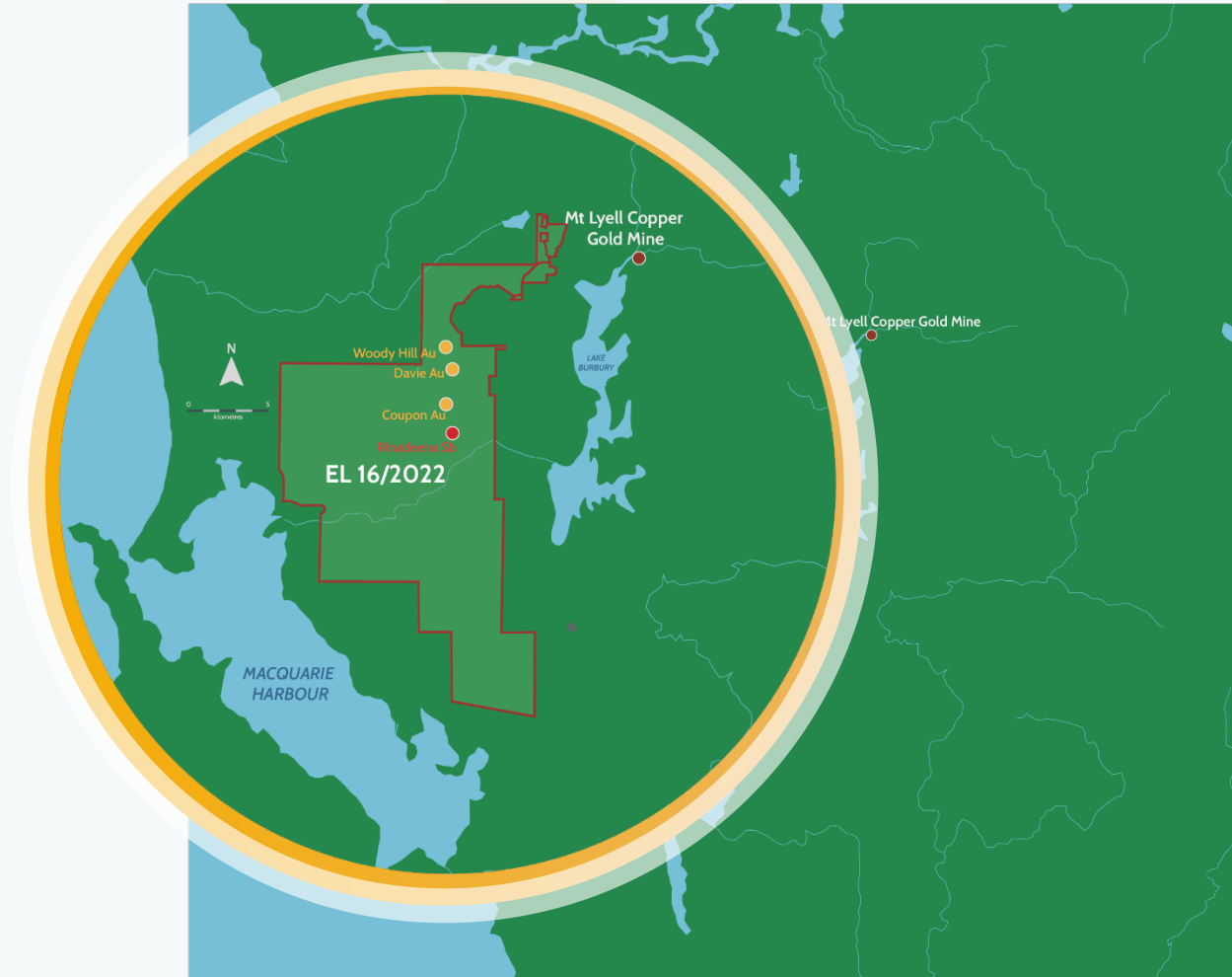
SULPHIDE CREEK PROJECT¹

Located in prolific historical mining area of Western Tasmania

- Project is 5km south of Queenstown mining centre and Mount Lyell Mine
- good access to road, power, water and workforce
- Granted tenure (EL16/2022) covering 224km² located dominantly within crown land or timber production zone - good land access

Key Target areas:

- **Rinadeena (Sb),**
- **Coupon (Au),**
- **24-28 Anomaly (Au),**
- **Davie (Au), and**
- **Davie PA (Au)**



¹AUH ASX announcement 4 Feb 2025

SULPHIDE CREEK GEOLOGY¹



- Project lies on western margin of the Mount Read Volcanics within the Dundas stratotectonic element, with lower greenschist metamorphism and deformation linked to the Devonian-Carboniferous Tabberabberan Orogeny.
- The geology consists of three structurally bound zones:
 - **Western half:** Ordovician–Devonian marine clastics, divided by the N-S striking Harvey Creek Fault (HCF).
 - **Northeast:** Similar clastics with substantial Gordon Limestone thicknesses east of the HCF.
 - **Southeast:** Cambrian Tyndall Group volcanoclastics fault-bounded and unconformably overlain by Ordovician Gordon Limestone, juxtaposed with Cambro-Ordovician clastics and conglomerates.
- Main target area is transected by the HCF and related secondary structures. Gold mineralisation is structurally controlled and hosted in gold-arsenopyrite-pyrite quartz vein in stockworks
- Mineralisation is associated with significant silica and sericite alteration. Geological interpretation suggests orogenic style mineralisation

¹AUH ASX announcement 4 Feb 2025

COUPON GOLD PROSPECT^{1,2}



- Historic mine - reported at least six tunnels plus shafts and winzes were developed historically into gold-bearing limonitic zones. **Production records in 1913 indicate 32t of ore was extracted at recovered grade of 12 g/t Au¹.**
- The Company's review of historic data at the Coupon area also shows significant historic soil, rock chip and channel sampling has been completed. This data is currently being compiled, with the Company aiming to identify additional drill targets from this work.
- Historic drilling at Coupon returned several intersections > 1g/t Au. The area also has a 20m to 50m wide halo of low-grade gold mineralisation (0.3 to 0.6g/t Au).
- Highlights drilling intersections include² –
 - **56m @ 0.6 g/t Au** from surface, including **12m @ 1.7 g/t Au** from 26m in LT89CCRC03 (Cyprus Gold);
 - **12m @ 1.2 g/t Au**, from 12m, including **2m @ 4.2 g/t Au** from 16m in LYN002 (Goldstream Mining);
 - **17.5m @ 0.82 g/t Au**, from 13m, including **2.5m @ 2.7 g/t Au** from 16m in LYN004 (Goldstream Mining)
- **No significant exploration testing of Coupon since 1995** – assessed as significant exploration opportunity and priority target for AUH.
- New structural model identified as analogous to high grade gold mineralisation in the central Victorian Goldfields.
- Drill thus far has only hit the halo-related gold (i.e., **0.3 to 1.5 g/t Au**). AUH will now target potential for high grade shoots in upcoming drill program (i.e., **15 to 32 g/t Au**)

¹AUH ASX announcement 4 Feb 2025

²AUH ASX announcement 7 May 2025

DAVIE GOLD PROSPECT^{1,2}

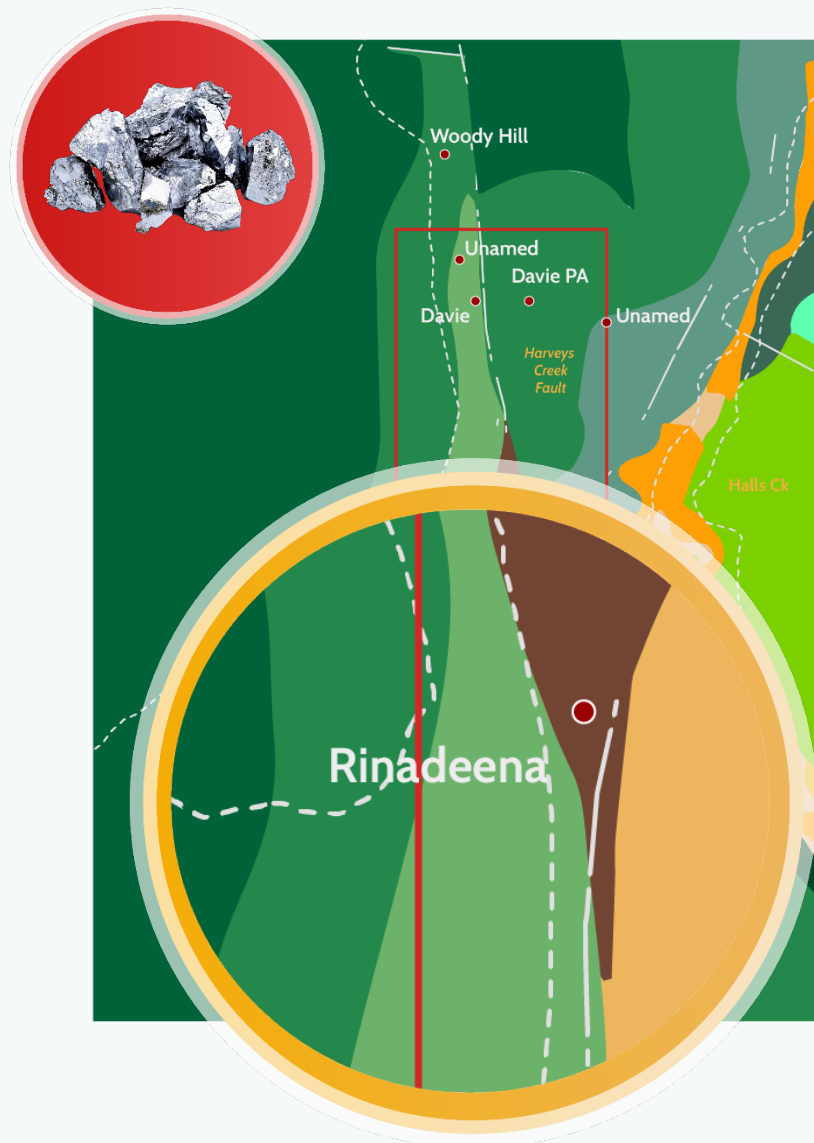


- The Davies Prospect is approximately 3.2km north along strike of the Coupon Prospect, with ready access via the Lyell Highway. It shows a similar mineralisation style along the Harvey fault system
- Davie workings consists of several shafts and adits developed on quartz reefs **which recorded 14 g/t gold at surface¹**.
- Faulted Fe-rich breccia/veining identified at surface. Like Coupon, the review of historic data at Davies also shows significant historic soil, rock chip and channel sampling has been completed. This data is currently being compiled
- Two small historic drilling programs have been completed at the prospect, which identified a broad zone of low-grade (0.3 to 0.5g/t Au) stockwork gold mineralisation.
- Zelos Resources (ASX:ZCO) reported encouraging results from two of three diamond drill holes completed in 20063 , including **106.5m @ 0.33 g/t Au to EOH** (Figure 4).
- Shree Minerals completed two diamond drillholes in 2011,
 - Hole SCDDH4 returning **23.5m @ 0.41g/t Au** (from 17m), including **3m @ 1.26g/t Au**
 - Hole SCDDH5 returning **37m @ 0.30g/t Au** (from 17m), and **53m @ 0.33g/t Au** (from 147m), including **3m @ 1.29g/t Au** (Figure 4)
- Like Coupon, structural model identified to be analogous to high grade gold mineralisation in the central Victorian Goldfields

¹AUH ASX announcement 4 Feb 2025

²AUH ASX announcement 7 May 2025

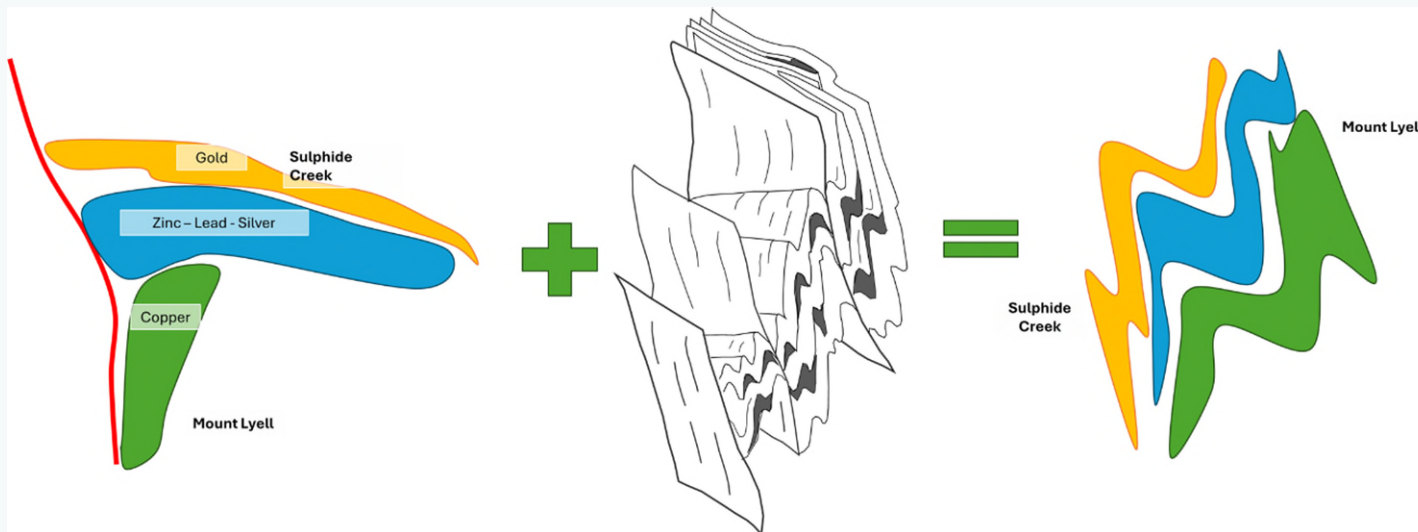
RINADEENA ANTIMONY PROSPECT¹



- Only historic antimony occurrence recorded by Geological Survey of Tasmania that is accessible. Ore samples collected and stored by the Geological Survey of Tasmania.
- **Antimony price currently at historic highs** following China's recent export ban on some antimony products.
- **Antimony is on the critical mineral lists of many countries** including; Australia, the USA, Canada, Japan and the EU due to its defence and military applications.
- Reported from workings^{2,3,4,5} (1906-1907) of **very high grade - ranging from 50 to 70% Sb** in stibnite (and **5 to 9 g/t Au**) in lode-hosted 6m width structure along slate and quartzite contact.
- Tasmanian Geological Survey reports⁶ assays taken from Mines Inspector reported to contain up to **66.57% Sb and 1.05% Pb**.
- The Rinadeena Formation is **lithologically, structurally and stratigraphically equivalent to the host rocks of the million-ounce Beaconsfield deposit** in Victoria.
- Records suggest 41m horizontal adit, from a 4m vertical shaft (no production records available).
- Prospect has had no modern exploration – **discovery potential exists with modern exploration techniques**.

¹AUH ASX announcement 4 Feb 2025 ² Wednesday 22nd August 1906, Zeehan and Dundas Herald; ³ Monday 7th January 1907, Zeehan and Dundas Herald; ⁴ Saturday 16 February 1907, Zeehan and Dundas Herald; ⁵ Thursday 28th February 1907, Zeehan and Dundas Herald ; ⁶ Nye, P.B. Supplementary Report on Antimony Minerals in Tasmania, Geological Survey of Tasmania, 1941

SULPHIDE CREEK Exploration Model¹



VMS mineralisation

Folding

New Deposit setting

Exploration mineralisation model for the Sulphide Creek Gold deposit view North



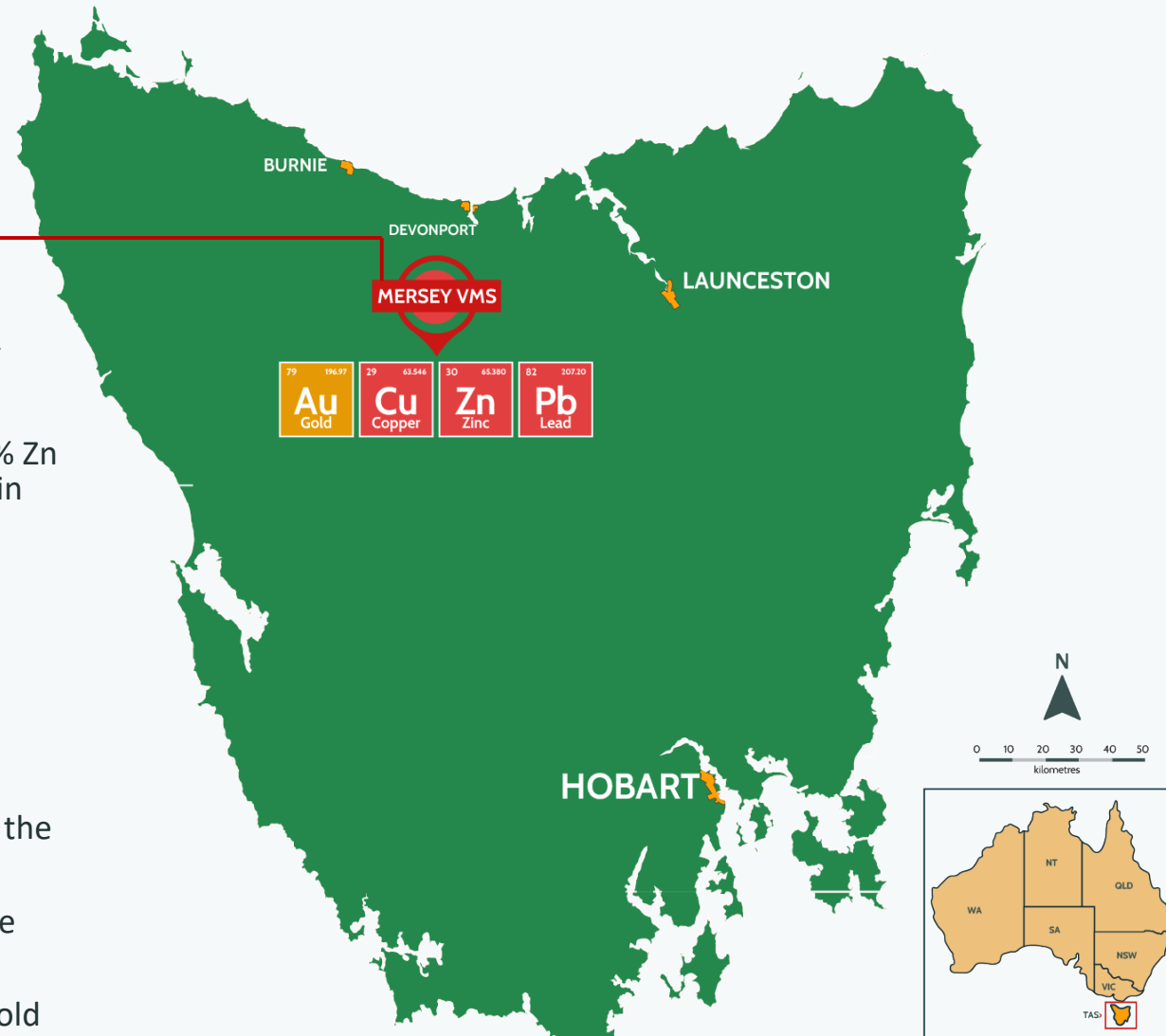
- The Sulphide Creek has the potential for the discovery of a significant orebody in the shadow of the headframe at the Mount Lyell Copper Deposit in Queenstown, which hosts historic total resources of 312Mt @ 1%Cu, 0.3 g/t Au.
- New structure studies of West Coast Tasmania deposits highlight folding having a major role in upgrading and focusing of mineralisation. This work postdates the Historic exploration undertaken at the Sulphide Creek Project and therefore presents significant opportunity
- While the VMS deposits serve as a source of base metals and gold, it is the subsequent folding / faulting which results in the important focus and siting of mineralisation at present.
- During the recent field reconnaissance and compilation of historic structural mapping at Sulphide Creek area, a structural fabric was identified, linked to gold mineralisation
- AUH target is to intersect high grade shoots of Au in upcoming drilling

¹AUH ASX announcement 7 May 2025

MERSEY VMS PROJECT¹

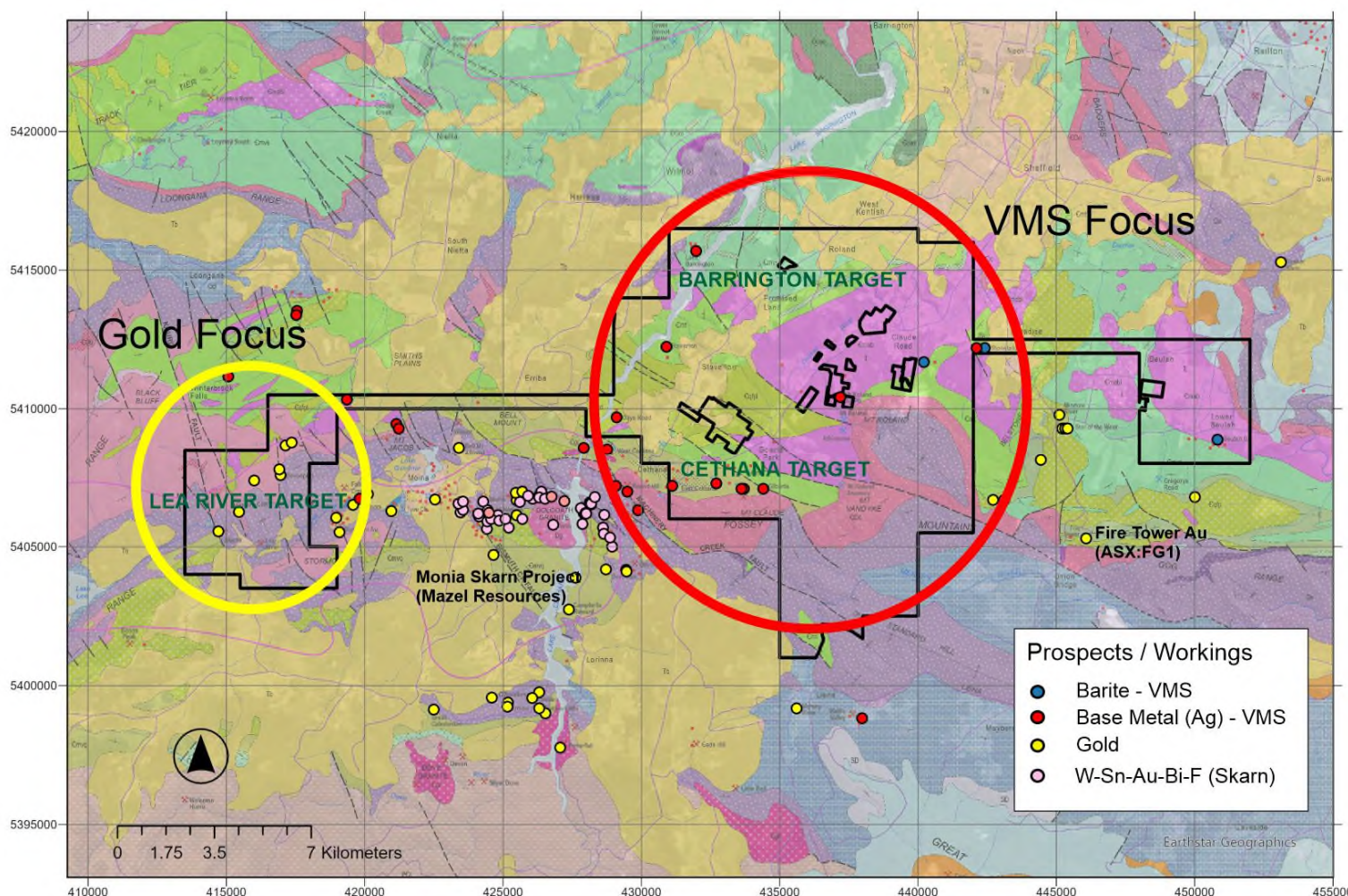


- **Mersey Base Metals-Gold Project** (Application EL6/2021) covers an area of 200km² in the historical, **world class mining area of NW Tasmania**.
- **VMS mineralisation model similar to nearby Hellyer Mine** 16.9Mt @ 13.8% Zn (NQ Minerals) and **Rosebery Mine** 54Mt @ 11.2% Zn (MMG) deposits within the Mt Read Volcanics.
- **35km along strike from the Hellyer Mine area** - displays similar geological settings to both Hellyer and Rosebery districts.
- **Mineralisation Styles occur as:**
 - Shear hosted, steeply dipping stacked Zn-Pb-rich ore lenses
 - Distal Cu and Au ore zones adjacent Zn-Pb-rich ore lenses
- **Previous exploration identified VMS mineralisation** present, with much of the work completed in the 1970's and 1980's (including drilling).
- **New insights and understandings into VMS systems** and their controls have created **new opportunities for exploration in Tasmania**.
- **Multiple target areas;** Cathena, Lake Barrington/Staverton and Lea River Gold prospect.



¹AUH ASX announcement 4 Feb 2025

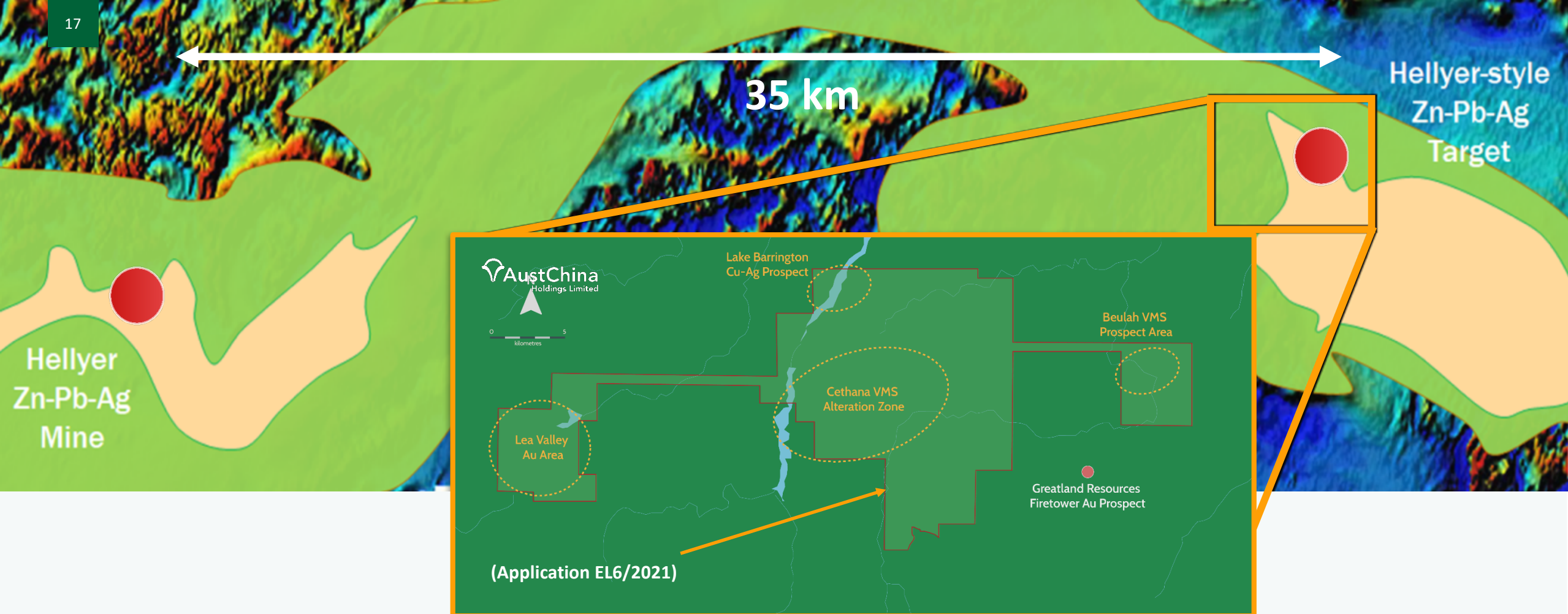
MERSEY VMS PROJECT



Co ords GDA 94 MGA Zone 55

- Key Target Base Metal and Gold Target Areas -
 - Cethana¹** - Multiple base metal prospects over a 8km-long, sericite-chlorite-pyrite alteration zone (Cethana Alteration Zone) hosted within felsic volcanoclastics and lavas, containing Pb-Zn mineralisation. Old workings containing Ag-Pb-Zn-Cu stockworks at Mt Roland and Atkinsons Prospects. Lead isotopes taken from sulphide samples at Mt Roland and Gowrie Prospects indicate similar results to Rosebery VMS Mine.
 - Barrington¹** - Cu-Ag-Pb-Zn mineralisation as disseminations and a thin massive sulphide bands hosted in sericite quartz-carbonate-pyrite altered tuffaceous siltstone and sandstone.
 - Lea River** – historic gold workings with limited modern exploration
- MRT records show exploration by CRAE, Plutonic Operations, RGC Exploration, Aberfoyle, Newcrest and Pasminco Exploration². Work including geophysics, surface geochemistry and drilling. Data currently being captured and validated into AUH database, including recorded VMS sulphides and alteration)

¹ A review and interpretation of the Lower Palaeozoic geology of the Que River–Sheffield area, with reference to the Cambrian volcanic sequences by K. D. Corbett and M. P. McClenaghan, Tasmanian Geological Survey Record 2003/17; ²AUH ASX announcement 4 Feb 2025



New Geophysics has highlighted a significant VMS style target in the project area.

Mount Read Volcanics – host to the Hellyer and Rosebery VMS deposits, are located near project area.

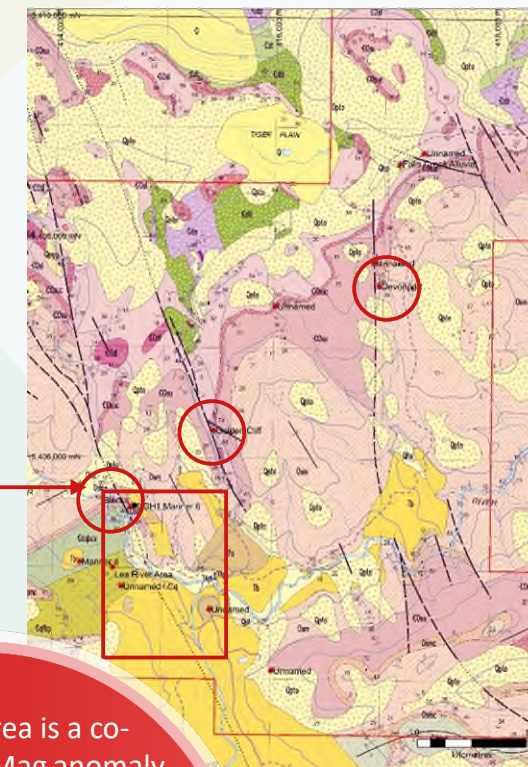
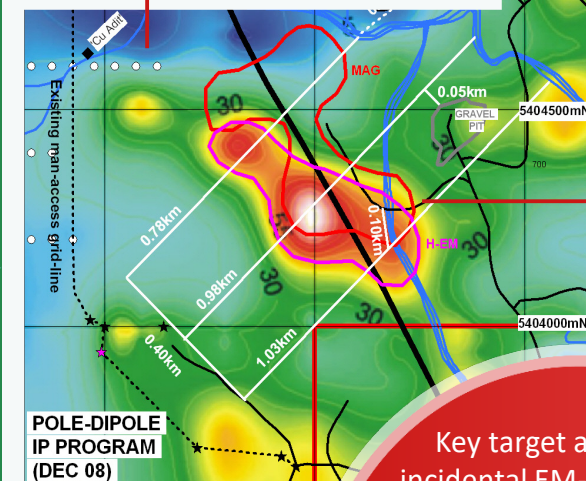
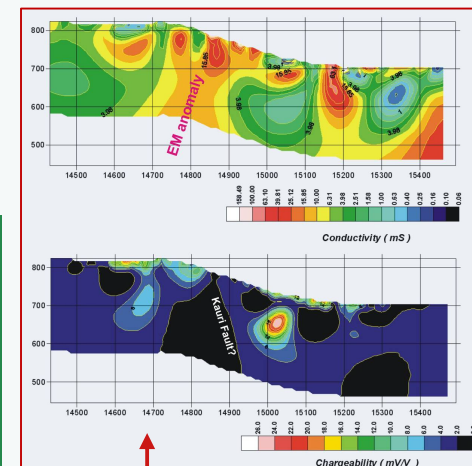
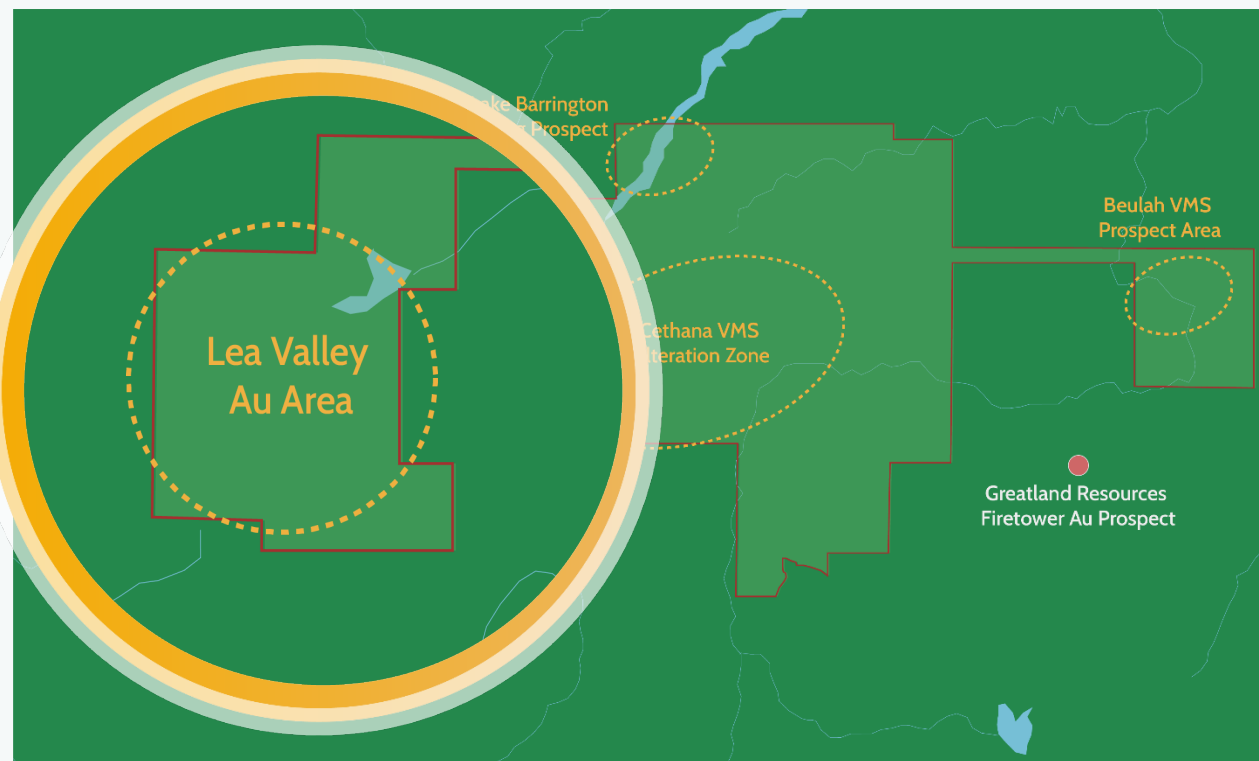
Mersey Project adjoins Greatland Gold's (AIM: GGP) Firepower Au-Cu Project, sharing similar geology and hosting significant gold intersections.

Magnetic 1VD imagery reveals a distinct magnetic zone, likely indicating a significant disseminated pyrite stringer zone in the footwall of the main mineralisation, supported by historic exploration data.

Planned exploration to include extensive soil and rock chip litho-geochemistry programs to vector mineralisation for drill hole targeting.

Also planned to complete modern airborne EM over the entire Project area, designed to target massive sulphide.

LEA RIVER GOLD¹



- **Potential orogenic gold target;** Lea River Gold area contains several old workings, with pyrite-quartz vein within shear zones contained in Ordovician sediments, along major NE structures.
- This included Blacks, Devonport and Gold Cliffs Prospects, with **grades of 8 to 32 g/t Au¹** identified in historic government production records.

¹AUH ASX announcement 4 Feb 2025

²Bass Metals Limited ASX announcement 30 January 2009

Key target area is a co-incident EM-Mag anomaly along the Kauri Fault south of the Blacks workings. IP line by Bass Metals (2009)² also identified conductivity anomaly, interpreted to be potentially associated with pyrite associated with gold. **This was not followed up with drilling**

NEXT STEPS

Acquisition completed – value accretive field work to commence



Sulphide Creek Project

- Data compilation of historic production and exploration reports, geology, geochemistry and geophysics.
- LIDAR (Light Detection and Ranging) survey to map historic workings and key structures over main Harvey Creek Fault system at Sulphide Creek
- Litho-structural interpretation to help define target areas
- On-ground exploration to refine initial drill targets – drilling currently planned for within six months of acquisition completion.

Mersey Project

- Grant of exploration license
- Soil sampling and rock chip geochemistry sampling programs to vector mineralisation for drill targeting – focusing on gold prospective areas in western region of the Project
- LIDAR survey
- Detailed airborne electro-magnetic (EM) survey over entire Project area to assist in identifying massive sulphide targets.



Contact us

Andrew Fogg

Chief Executive Officer

☎ +61 7 3229 6606

✉ info@austchinaholdings.com

James Moses

Investor & Media Relations

☎ +61 420 991 574

✉ james@mandatecorporate.com.au