



**PALADIN**

# June 2025 Quarter Presentation

23 July 2025



# Important Notice

This presentation (**Presentation**) is dated 23 July 2025 and has been prepared by Paladin Energy Ltd (the **Company** or **Paladin**) based on information available to it at that time. You should read this disclaimer carefully before making any use of this Presentation or the information contained herein. By accessing or reviewing this Presentation you acknowledge and agree to the terms set out in this disclaimer.

## *Summary Information*

The information in this Presentation is of a general background nature only and does not purport to be complete or contain all of the information investors would require to evaluate an investment in the Company. The information in the Presentation is current as at the date of the Presentation and the Company accepts no responsibility for updating its content. This Presentation has been prepared with due care, but the Company gives no representation or warranty (express or implied) in relation to the currency, accuracy, reliability, fairness or completeness of the information, opinions or conclusions herein. This Presentation should be read together with Paladin's periodic and continuous disclosure, available at [www.paladinenergy.com.au](http://www.paladinenergy.com.au) and [www.sedarplus.ca](http://www.sedarplus.ca).

## *Not an Offer*

This Presentation is for information purposes only and does not constitute an offer, invitation or recommendation to purchase or otherwise deal in securities in the Company or any other financial products. Neither this Presentation nor any of its contents will form the basis of any contract or commitment. This Presentation is not a prospectus, product disclosure statement or other disclosure or offer document under Australian law, Canadian law, or the law of any other jurisdiction.

## *Not Investment or Financial Advice*

This Presentation, and the information in it, does not constitute financial product, legal, tax or other investment advice and is not a recommendation regarding the acquisition or disposal of Paladin's securities. No account has been taken of the objectives, financial situation or needs of any recipient of this Presentation. Recipients should therefore carefully consider whether Paladin's securities are an appropriate investment for them in their personal, financial, taxation and other circumstances. Recipients should seek appropriate independent professional advice before taking any action based on the information contained in this Presentation.

## *Past Performance*

Historical information in this Presentation should not be relied upon as (and is not) an indication of future performance, including share price performance.

## *Forward-Looking Statements*

This document contains certain "forward-looking statements" within the meaning of Australian securities laws and "forward-looking information" within the meaning of Canadian securities laws (collectively referred to in this document as forward-looking statements). All statements in this document, other than statements of historical or present facts, are forward-looking statements and generally may be identified by the use of forward-looking words such as "anticipate", "expect", "likely", "propose", "will", "intend", "should", "could", "may", "believe", "forecast", "estimate", "target", "outlook", "guidance" and other similar expressions. These forward-looking statements include, but are not limited to, statements about Paladin's expectations for FY2026.

Forward-looking statements involve subjective judgment and analysis and are subject to significant uncertainties, risks and contingencies including those risk factors associated with the mining industry, many of which are outside the control of, change without notice, and may be unknown to Paladin. These risks and uncertainties include but are not limited to liabilities inherent in mine development and production, geological, mining and processing technical problems, the inability to obtain any additional mine licenses, permits and other regulatory approvals required in connection with mining and third party processing operations, competition for amongst other things, capital, acquisition of reserves, undeveloped lands and skilled personnel, incorrect assessments of the value of acquisitions, changes in commodity prices and exchange rates,

currency and interest fluctuations, various events which could disrupt operations and/or the transportation of mineral products, including labour stoppages and severe weather conditions, the demand for and availability of transportation services, the ability to secure adequate financing and management's ability to anticipate and manage the foregoing factors and risks. Readers are also referred to the risks and uncertainties referred to at pages 24 to 30 inclusive of Paladin's Management's Discussion and Analysis released to ASX on 13 May 2025.

Although at the date of this document, Paladin believes the expectations expressed in such forward-looking statements are based on reasonable assumptions, such statements are not guarantees of future performance and actual results or developments may differ materially from the expectations expressed in such forward-looking statements due to a range of factors including (without limitation) fluctuations in commodity prices and exchange rates, exploitation and exploration successes, permitting and development issues, political risks including the impact of political instability on economic activity and uranium supply and demand, Indigenous Nations engagement, climate risk, operating hazards, natural disasters, severe storms and other adverse weather conditions, shortages of skilled labour and construction materials, equipment and supplies, regulatory concerns, continued availability of capital and financing and general economic, market or business conditions and risk factors associated with the uranium industry generally. There can be no assurance that forward-looking statements will prove to be accurate.

Readers should not place undue reliance on forward-looking statements, and should rely on their own independent enquiries, investigations and advice regarding information contained in this document. Any reliance by a reader on the information contained in this document is wholly at the reader's own risk. The forward-looking statements in this document relate only to events or information as of the date on which the statements are made. Paladin does not assume any obligation to update or revise its forward-looking statements, whether as a result of new information, future events or otherwise. No representation, warranty, guarantee or assurance (express or implied) is made, or will be made, that any forward-looking statements will be achieved or will prove to be correct. Except for statutory liability which cannot be excluded, Paladin, its officers, employees and advisers expressly disclaim any responsibility for the accuracy or completeness of the material contained in this document and exclude all liability whatsoever (including negligence) for any loss or damage which may be suffered by any person as a consequence of any information in this document or any error or omission therefrom. Except as required by law or regulation, Paladin accepts no responsibility to update any person regarding any inaccuracy, omission or change in information in this document or any other information made available to a person, nor any obligation to furnish the person with any further information. Nothing in this document will, under any circumstances, create an implication that there has been no change in the affairs of Paladin since the date of this document.

To the extent any forward-looking statement in this document constitutes "future-oriented financial information" or "financial outlooks" within the meaning of Canadian securities laws, such information is provided to demonstrate Paladin's internal projections and to help readers understand Paladin's expected financial results. Readers are cautioned that this information may not be appropriate for any other purpose and readers should not place undue reliance on such information. Future-oriented financial information and financial outlooks, as with forward-looking statements generally, are, without limitation, based on the assumptions, and subject to the risks and uncertainties, described above.

## *Investment Risk*

An investment in the Company is subject to a range of known and unknown risks, including the possible loss of income and/or capital invested. The Company does not guarantee any particular rate of return, the performance of the Company, the repayment of capital from the Company or the particular tax treatment of any investment. When making any investment decision, investors should make their own enquiries and investigations, including but not limited to forming their own views regarding the assumptions, uncertainties and contingencies mentioned in this Presentation which may affect the future operations and financial condition of the Company.



## *Technical Information*

Unless otherwise indicated, Paladin has prepared the technical information in this Presentation based on information contained in the technical reports and ASX announcements available under Paladin's profile on SEDAR+ at [www.sedarplus.ca](http://www.sedarplus.ca) and on its website at [www.paladinenergy.com.au](http://www.paladinenergy.com.au).

## *Market and Industry Data*

Certain information in this Presentation may have been obtained from market and industry data and forecasts obtained from government or industry publications and reports. Such market and industry data is subject to variations and cannot be verified due to limits on the availability and reliability of the relevant data inputs, the voluntary nature of the data gathering process and other limitations and uncertainties inherent in any market or other survey. While Paladin believes any such data contained in this Presentation to be reliable, neither Paladin nor its representatives have independently verified any such information sourced from third parties and accordingly disclaimers all responsibility and liability whatsoever in respect to any such information.

## *Non-IFRS measures*

Paladin uses certain financial measures that are considered "non-IFRS financial information" within the meaning of Australian securities laws and/or "non-GAAP financial measures" within the meaning of Canadian securities laws (collectively referred to in this announcement as Non-IFRS Measures) to supplement analysis of its financial and operating performance. These Non-IFRS Measures do not have a standardised meaning prescribed by International Financial Reporting Standards (IFRS) and therefore may not be comparable to similar measures presented by other issuers.

The Company believes these measures provide additional insight into its financial results and operational performance and are useful to investors, securities analysts, and other interested parties in understanding and evaluating the Company's historical and future operating performance. However, they should not be viewed in isolation or as a substitute for information prepared in accordance with IFRS. Accordingly, readers are cautioned not to place undue reliance on any Non-IFRS Measures. The Non-IFRS Measure used in this announcement are described in the notes section below.

## *Rounding*

Figures, amounts, percentages, estimates and calculations of value in this Presentation are subject to rounding. Accordingly, the actual calculation of such figures may differ from figures in this Presentation.

## *Authorisation*

This announcement has been authorised for release by the Board of Directors of Paladin.







# June 2025 Quarter

Refer to Paladin's exchange announcement titled "June 2025 Quarterly Activities Report" dated 23 July 2025

# Highlights



- 33% increase in quarter-on-quarter production at the Langer Heinrich Mine (LHM)
- Highest quarterly crusher circuit throughput in the history of the LHM operations
- Patterson Lake South (PLS) Project Final Environmental Impact Statement formally accepted by the Saskatchewan Ministry of Environment
- Successful PLS winter drilling program delivered the most significant radioactivity results ever recorded on the Company's tenements outside of the Triple R deposit
- Paul Hemburrow appointed Managing Director and Chief Executive Officer of Paladin Energy, effective 1 September 2025
- Cash and cash equivalents of US\$89.0M and an undrawn US\$50M revolving debt facility at quarter end

LHM Summary (100%) <sup>1</sup>		Q4 FY2025	Q3 FY2025	Q2 FY2025	Q1 FY2025	FY2025
U <sub>3</sub> O <sub>8</sub> Produced	lb	993,843	745,484	638,409	639,679	3,017,415
U <sub>3</sub> O <sub>8</sub> Sold <sup>2</sup>	lb	710,051	872,435	500,143	623,064	2,705,693
Average Realised Price <sup>3</sup>	US\$/lb	55.6	69.9	66.9	70.3	65.7
Cost of Production <sup>4</sup>	US\$/lb	37.5	40.6	42.3	41.9	40.2



	Q4	Q3	Q2	Q1	
	FY2025	FY2025	FY2025	FY2025	FY2025
TRIFR (12 month average)	2.7	3.3	1.3	2.2	2.7

- Paladin exceeded FY2025 safety targets with full year TRIFR of 2.7 per million hours, compared to the previous year TRIFR of 3.8 per million hours worked
- The Company continued its drive to improve safety performance, with a focus on embedding critical risk management processes and safety leadership development
- No serious environmental or radiation incidents or breaches of environmental compliance requirements recorded during the quarter
- Paladin’s climate risk and resilience program progressed, with scenario analysis and risk and opportunity assessments advancing in preparation for reporting against the Australian Sustainability Reporting Standards (AASB S2) from FY2026



- During the quarter, the Company continued its investment in local communities, including:
  - supporting the establishment of a Breast Cancer Clinic in Swakopmund State Hospital in collaboration with the Namibian Ministry of Health, and
  - partnering with Cricket Namibia to develop the Mondesa Cricket Hub at Hanganeni Primary School
- In Namibia, employment opportunities for local residents increased significantly with the ramp-up of mining activities at the LHM, including through contractor engagement

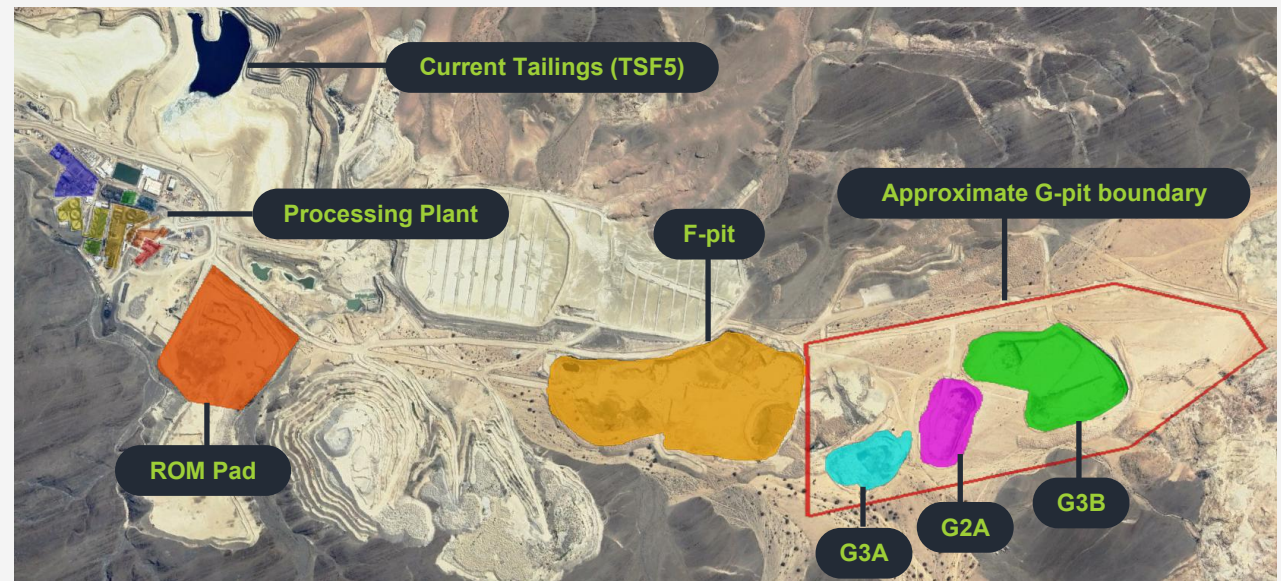
# Langer Heinrich Mine | Namibia Mining



## Mining activities commenced in April with the G2A pit being the primary source of freshly mined ore for the quarter

- Mobilisation of two fleets of 100 tonne dump trucks, and mobilisation of the mining contractor and the blasting contractor teams occurred during the quarter
- Drilling, blasting, and load-and-haul operations progressed steadily in pit G2A, with additional benches opened to support consistent ore delivery to the ROM pad
- Basic mine infrastructure upgrades were progressed during the quarter including access road upgrades, bunding upgrades, dewatering, and preparation works for the G3A pit mining expected later in the calendar year
- Over time, the G-pit will evolve into a single, larger open pit encompassing the current sub-pits. This expansion will require the movement of increased volumes of waste material with the mining of deeper sections of the orebody as well as the mining of previously flooded pits. The Company is actively managing this through pit wall design and water control infrastructure to ensure safe and efficient access to ore

LHM Summary (100%)		Q4	Q3	Q2	Q1	
		FY2025	FY2025	FY2025	FY2025	FY2025
Total Mined	DT (million)	3.23	-	-	-	3.23
Waste	DT (million)	1.01	-	-	-	1.01
Total Ore Mined <sup>5</sup>	DT (million)	2.22	-	-	-	2.22
Low grade ore to stockpile <sup>6</sup>	DT (million)	1.22	-	-	-	1.22



# Langer Heinrich Mine Processing plant

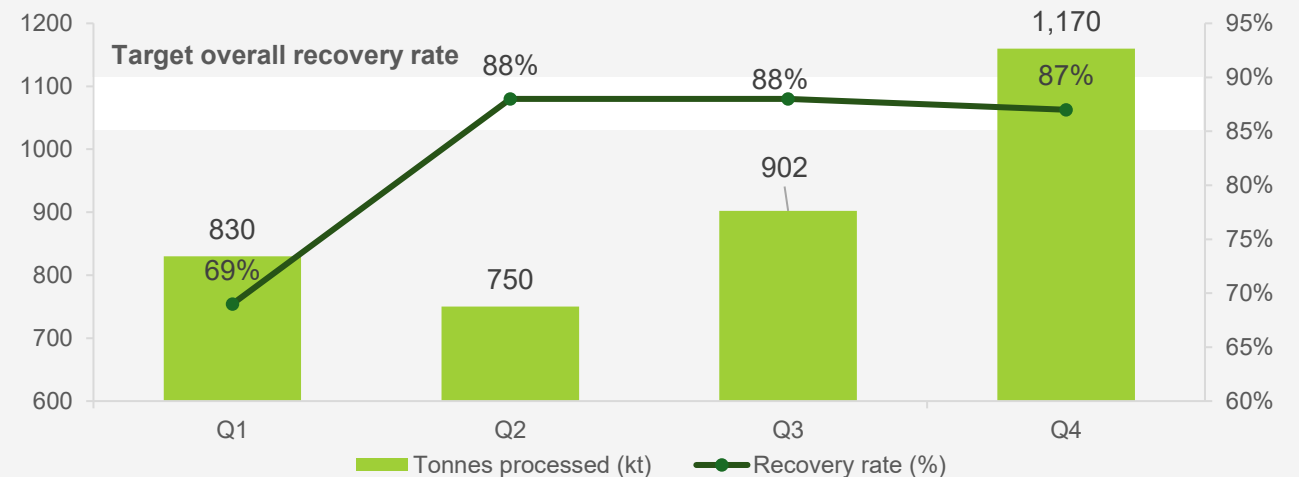


## Highest quarterly crusher circuit throughput in the history of the LHM operations

- Record crusher throughput of 1.17Mt (previous record was 982,209t in March 2014 quarter), consistent plant performance and improved feed blend quality
- The average plant overall recovery rate was 87% for the quarter
- Water management strategies continued to ensure adequate water supply, with captured rainwater used to supplement process water across the operations
- The Company continues to assess and refine its blending strategies to optimise plant performance
- The medium-grade stockpile remains a key component of the feed blend, and blending freshly mined ore has contributed to improved feed consistency and plant stability

LHM Summary (100%)		Q4	Q3	Q2	Q1	
		FY2025	FY2025	FY2025	FY2025	FY2025
Tonnes Processed	DT (million)	1.17	0.90	0.75	0.83	3.64
Ore Feed Grade	PPM	477	419	404	422	435
Plant Recovery	%	87	88	88	69	84

**FY2025 Tonnes Processed and Recovery Rate**

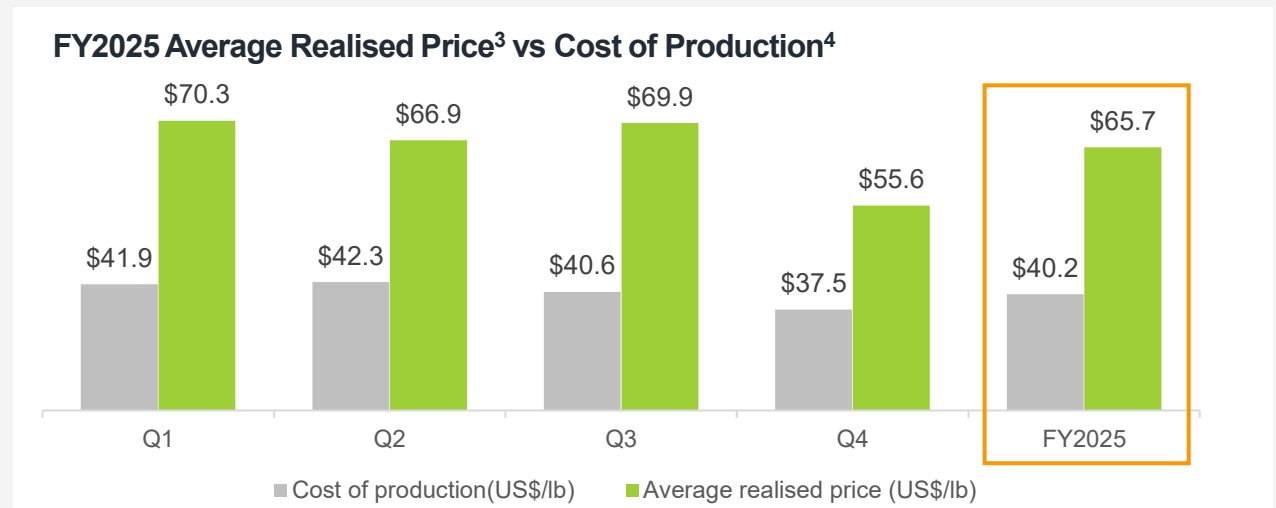
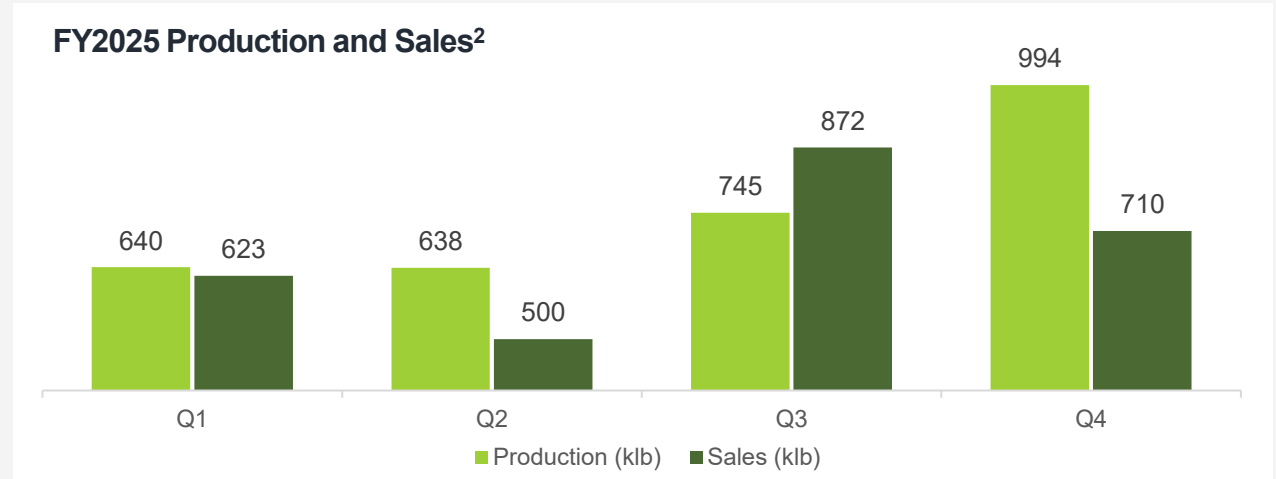


# Langer Heinrich Mine Production and Sales



**33% increase in quarter-on-quarter production, the highest quarterly output since the mine's restart**

- The LHM produced 993,843lb U<sub>3</sub>O<sub>8</sub> during the quarter
- Total production for the financial year of 3.0Mlb U<sub>3</sub>O<sub>8</sub>
- Sales of 710,051lb U<sub>3</sub>O<sub>8</sub> during the quarter, with full financial year sales of 2,705,693lb U<sub>3</sub>O<sub>8</sub>
- All customer delivery obligations were met during the quarter and financial year
- During the quarter, the LHM signed one additional uranium sales agreement and now has 13 sales agreements with tier-one global customers





# Langer Heinrich Mine Contract Book



**13**

Uranium sales agreements secured with Tier-1 industry counterparties in the US, Europe and Asia

**24.1Mlb**

of U<sub>3</sub>O<sub>8</sub> contracted to 2030<sup>7</sup>

**Our customers**

account for over 40% of global uranium reactor requirements<sup>8</sup>

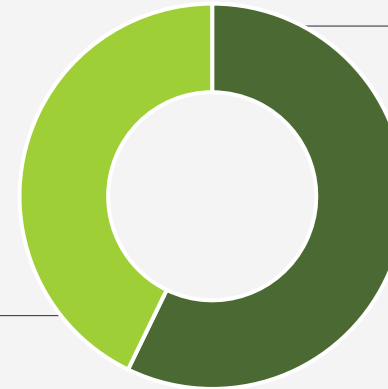
**Life of mine**

sales agreement with CNNC, one of the largest consumers of uranium in the world

## Contract pricing mix (2025-30)<sup>8</sup>

**43%**

Base-escalated & fixed prices



**57%**

Market-related prices

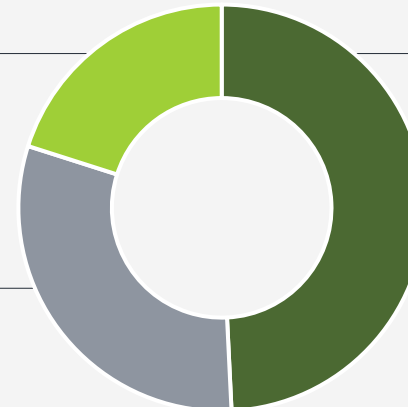
## Geographic breakdown (2025-30)<sup>8</sup>

**20%**

Europe

**31%**

US



**49%**

Asia

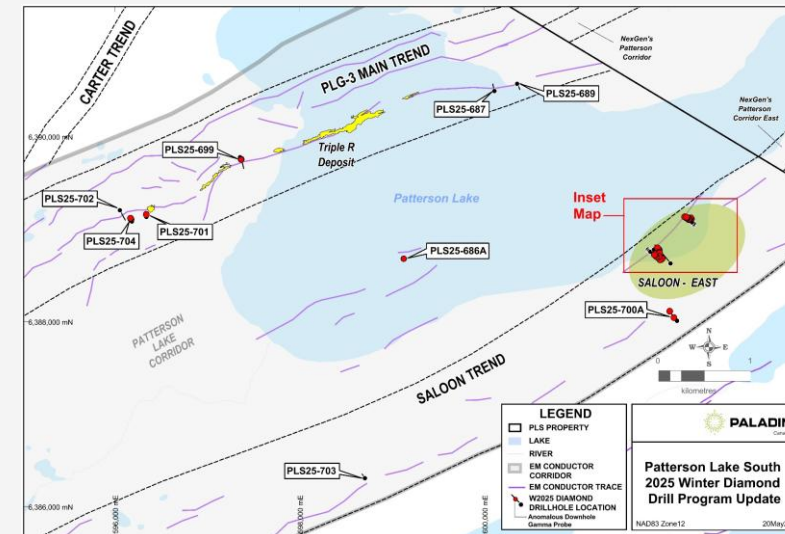
# Patterson Lake South | Canada Project Progress & Exploration



PLS <sup>9</sup>		Q4	Q3	Q2	Q1	
		FY2025	FY2025	FY2025	FY2025	FY2025
Development & Permitting	US\$M	4.4	2.5	0.5	-	7.4
PLS Exploration	US\$M	1.9	2.3	0.2	-	4.4
Other Exploration	US\$M	0.6	0.1	-	-	0.7

- The PLS Project's Final Environmental Impact Statement (EIS) was formally accepted by the Saskatchewan Ministry of Environment during the quarter
- Completion of the technical review period is a significant milestone for the PLS Project and the EIS and technical review comments were posted for public review on 5 July 2025
- Following the public review period, the Environmental Assessment Branch will compile comments and put their recommendation to the Minister

- The winter drilling program at PLS was successfully completed during May 2025 and delivered the most significant radioactivity results ever recorded on the Company's tenements, outside of the Triple R deposit<sup>10</sup>
- A total of twenty drillholes were completed, with eleven targeting Saloon East deposit 3.5km south east of Triple R. The results were obtained from a consistent package of hydrothermally altered and structurally deformed basement rocks located between 200m and 420m vertically from surface
- The widespread nature and intensity of radioactivity observed across multiple drillholes materially enhances our geological understanding of the Saloon Trend and supports its classification as a significant zone of interest within the PLS Project



**2025 Regional  
Drillhole Plan Map**

**PALADIN**  
Patterson Lake South  
2025 Winter Diamond  
Drill Program Update  
NAD83 Zone12 20May25



# Michelin Project | Canada Exploration



## Winter drilling program concluded during the quarter

- Winter drilling program activities were focused within a reduced radius of the Michelin deposit
- This targeted approach enhances future operational potential by identifying mineralisation zones in closer proximity
- Results from the program are being assessed and will inform planning for the FY2026 summer drilling campaign
- Community engagement activities continued during the period, and regular updates will be provided on project progress

Michelin Project		Q4	Q3	Q2	Q1	
		FY2025	FY2025	FY2025	FY2025	FY2025
Exploration	US\$M	1.6	1.8	1.3	2.2	6.9

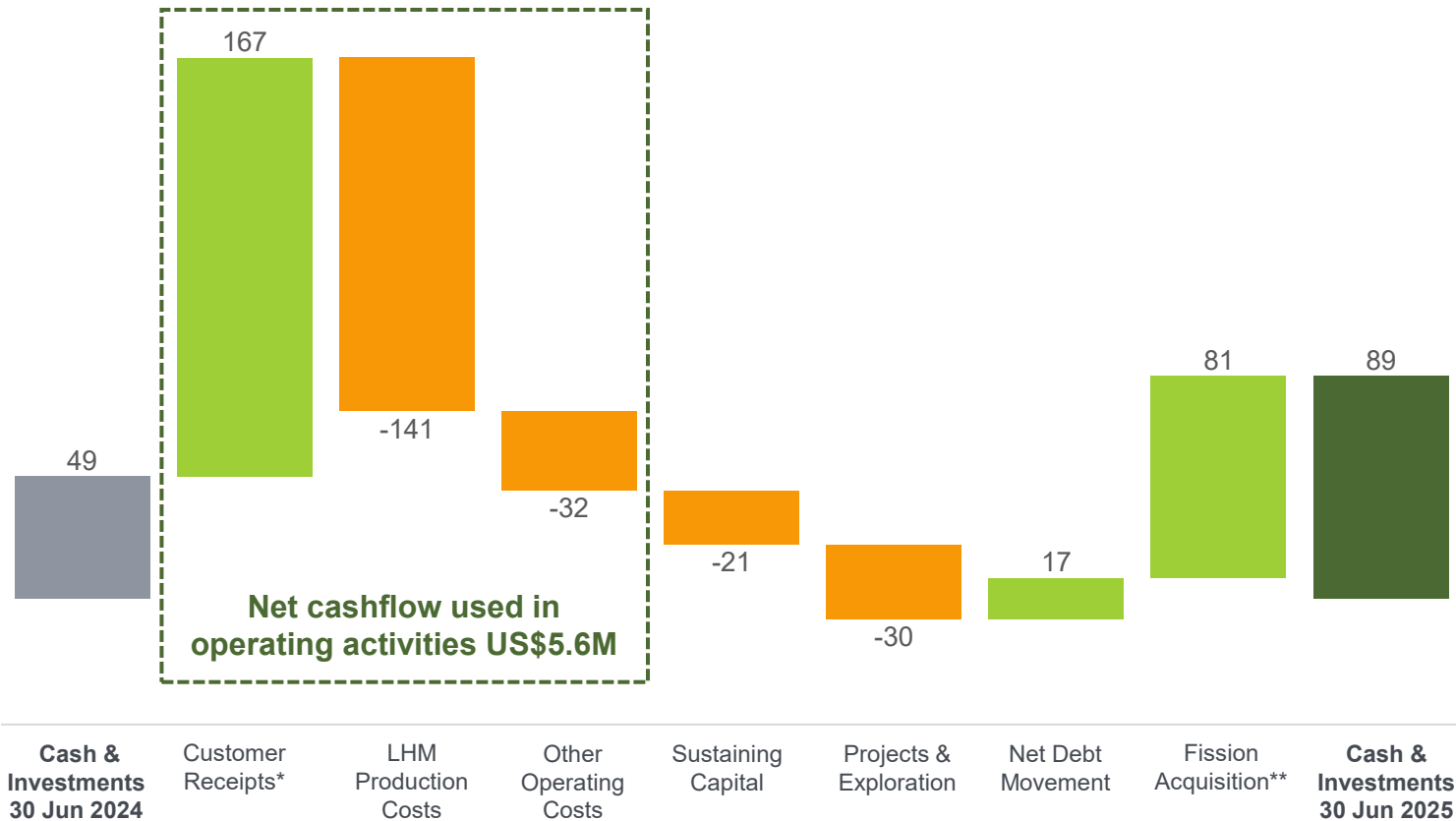


# FY2025 Cash Flow



For the twelve-month period ended 30 June 2025

US\$ million



- Cash and cash equivalents of US\$89.0M (excluding restricted cash of US\$4.4M)
- Commencement of mining during the quarter, and timing-related working capital movements were the main contributors for the reduction of US\$38.8M in cash and cash equivalents during the quarter
- US\$29.2M of cash receipts received in early July for revenue recognised in the June quarter
- Sales volumes, revenues and cashflows can vary significantly on a quarterly basis due to the timing of shipping and logistics of customer deliveries and quarterly results do not necessarily represent annual results for sales, revenue and cashflows
- Second scheduled debt repayment (US\$6.7M) made during the quarter resulting in a closing drawn debt balance of US\$86.5M at quarter end
- The Company also holds an undrawn US\$50M Revolving Facility

\* Includes US\$28.6M advanced payment received from a customer in June 2025 for a sale to be recognised in July 2025

\*\* Includes US\$32.0M in cash and cash equivalents and US\$48.7M in short-term investments related to the acquisition of Fission Uranium Corp.





**PALADIN**

# LHM FY2026 Guidance

Refer to Paladin's exchange announcement titled "Langer Heinrich Mine FY2026 Guidance" dated 23 July 2025

# Langer Heinrich Mine FY2026 Guidance



**The operational ramp-up of the LHM is expected to be completed by the end of FY2026 with full mining and processing plant operations planned for FY2027**

- The LHM will continue its operational ramp-up during FY2026 with the ramp-up of mining operations over the course of the year, as the LHM continues the ongoing transition from the processing of stockpiled medium grade ore to the processing of primary mined ore
- Mining operations for FY2026 are expected to be concentrated in the G-pit area with minor mining activity planned for the F and J pits late in the financial year
- Quarterly production volumes are expected to vary during FY2026, primarily due to access to primary mined ore feed to the processing plant in the first half of FY2026
- Production is expected to be higher in the second half of FY2026 with a higher level of primary ore feed available to blend with the medium-grade stockpiled material
- During FY2026, Paladin is expecting to continue to deliver uranium to its global customers in the US, Europe and Asia and will continue to look for opportunities to layer in new contracts with high quality counterparties

LHM Guidance (100% <sup>1</sup> ) <sup>11, 12</sup>		FY2026
U <sub>3</sub> O <sub>8</sub> Produced	Mlb	4.0 - 4.4
U <sub>3</sub> O <sub>8</sub> Sold <sup>13</sup>	Mlb	3.8 - 4.2
Unit Cost of Production <sup>14</sup>	US\$/lb	44 - 48
Capital & Exploration Expenditure <sup>15</sup>	US\$	26 - 32

Realised Price Sensitivity		FY2026
Spot Price Assumption (US\$/lb)	Forecast Realised Price (US\$/lb) <sup>16</sup>	
40	54	
60	62	
80	71	
100	79	
120	87	
140	94	



# Langer Heinrich Mine FY2026 Mining Areas

**Mining operations for FY2026 are expected to be concentrated in the G-pit area with minor mining activity planned for the F and J pits late in the financial year**

- The LHM commenced FY2026 with an estimated 2.2Mt of stockpiled medium grade ore and approximately 49% of its planned mining fleet capacity in operations
- The remaining mining fleet is scheduled for delivery in late 2025 and is expected to be commissioned and in service during the second half of FY2026
- The Company is expecting lower levels of primary mined ore feed during the first half of the financial year, as the mining operations focus on waste removal across the G-pit area to allow for higher levels of mined ore production during the second half of the financial year.
- The LHM mine plan has been optimised to deliver medium and high-grade ore to the processing plant with lower grade ore to be stockpiled for future processing





Clean Energy.  
Clear Future.







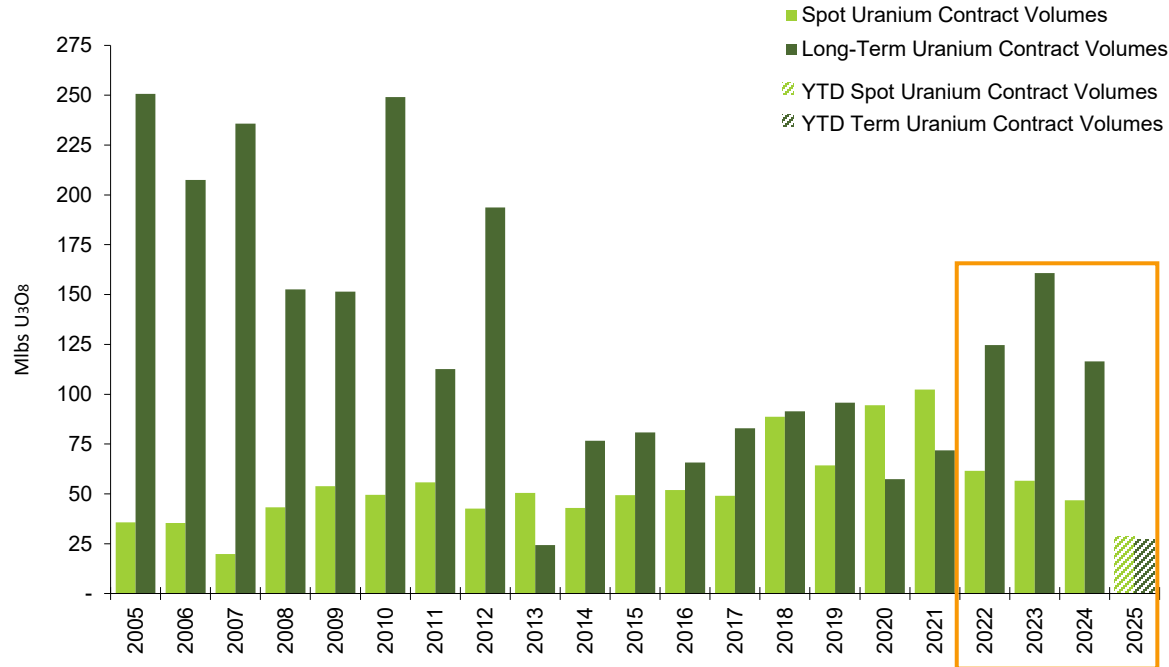
**PALADIN**

# Appendices

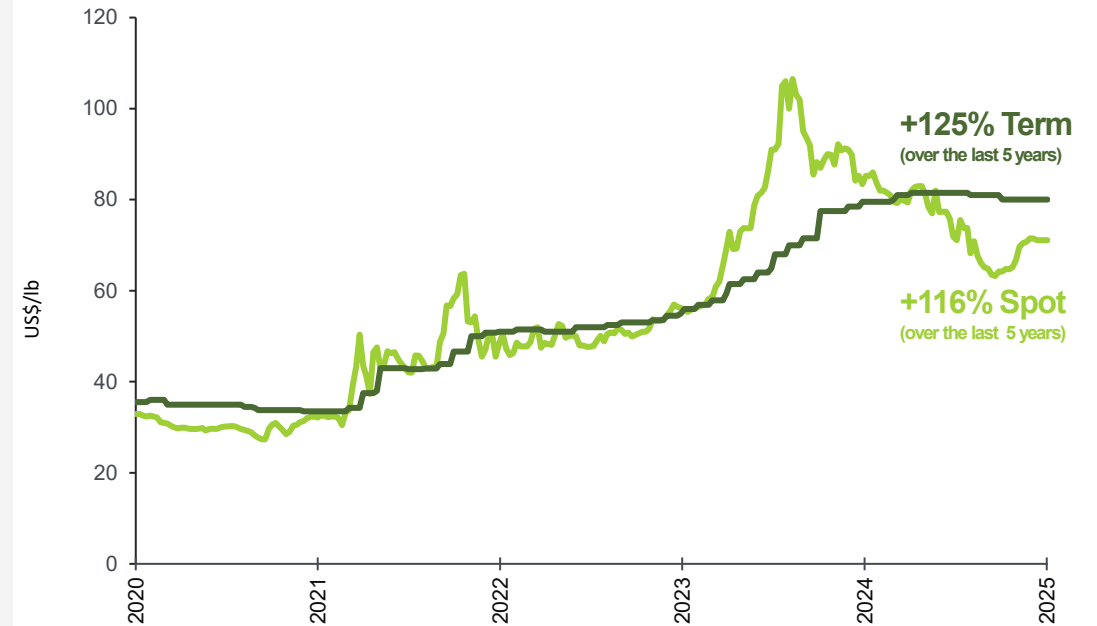
# Uranium market returning to fundamentals



## Spot and term market volumes<sup>17</sup>



## Spot and term pricing, last 5 years<sup>18</sup>



- Utilities have sourced on average over 90% via term contracts in the last three years<sup>19</sup>. Whilst term contract volumes have improved in recent years, contracted activity remains below replacement levels
- Global nuclear utilities have ~1Blb of uncovered uranium requirements over the next decade<sup>20</sup>
- Term activity drives uranium pricing outlook



1. Paladin has a 75% interest in the LHM
2. FY2025 sales include 365,000lb loan material delivered into existing contracts – 165,000lb in the June 2025 Quarter and 200,000lb in the December 2024 quarter
3. FY2025 Average Realised Price is calculated as the average revenue received per pound sold. Average Realised Price is a Non-IFRS Measure. Refer to “Non-IFRS Measures” in the June 2025 Quarterly Activities Report
4. FY2025 Cost of Production includes mining, stockpile rehandling, processing, site maintenance, and mine-level administrative costs, but excludes costs of ore stockpiled, depreciation & amortisation, general and administration costs, royalties, exploration expenses, sustaining capital and the impacts of any inventory impairments or impairment reversals. Cost of Production is a Non-IFRS Measure. Refer to “Non-IFRS Measures” in the June 2025 Quarterly Activities Report
5. FY2025 Total Ore Mined includes high grade, medium grade and low-grade ore
6. FY2025 low-grade ore stockpiled for future processing in later years. These will be classified as non-current inventories
7. Based on LHM contract book as at 30 June 2025. Based on nominal contract volumes from 30 June 2025 to 31 December 2030 under executed uranium sales agreements. Subject to customary conditions precedent contained in uranium sales agreements, including the requirement to receive Namibian Government and other regulatory approvals. Figures are rounded to nearest whole number
8. Sources: UxC Uranium Market Outlook, Q1 2025, S&P Capital IQ as at June 2025. Assumes annual uranium requirements of 500klb per GW of reactor operating capacity
9. The acquisition of Fission Uranium Corp was completed on 24 December 2024, and figures include only expenditure incurred since the acquisition date
10. Refer to Paladin’s exchange announcement entitled “PLS Project Winter Drilling Delivers Positive Results at Saloon East” dated 2 June 2025
11. Refer to Paladin’s exchange announcement titled “Langer Heinrich Mine FY2026 Guidance” dated 23 July 2025. The production guidance provided is based on considered plant availability and utilisation assumptions and includes allowances for expected water supply disruptions, estimated planned and unplanned maintenance activities, and general plant disruptions based on historical performance.
12. USD/NAD FX assumption: 18.0
13. LHM FY2026 Guidance for Sales includes existing uranium loans of 450,000 lbs are assumed to be extended or replaced with similar arrangements during FY2026
14. LHM FY2026 Guidance for Cost of Production includes mining costs, stockpile rehandling costs, processing costs, site maintenance & site administration costs, but excludes cost of ore stockpiled, depreciation and amortisation, general and administration costs, royalties, exploration expenses, sustaining capital and the impacts of any inventory impairments or impairment reversals. Cost of Production is a Non-IFRS Measure. Refer to “Non-IFRS Measures” in the June 2025 Quarterly Activities Report
15. LHM FY2026 Guidance for Capital and Exploration expenditure includes ongoing TSF preparation work, NIMCIX resin replacement and infill and exploration drilling
16. Key assumptions for the LHM FY2026 Guidance for Realised Price Sensitivity:
  - a. The sensitivity analysis is based on the midpoint of the forecasted sales volume range (4.0Mlb)
  - b. The forecast realised price assumes that the uranium spot price remains constant for the duration of the financial year
  - c. Deliveries based on commitments under contracts include the Company’s estimate of the expected deliveries and takes into account the flexibility provided under existing contract terms
  - d. To reflect escalation mechanisms contained in existing contracts, a forecast US inflation rate of 3% p.a. has been assumed in relation to escalation clauses under existing contracts
17. UxC Uranium Market Outlook, Q1 2025. 2025 YTD volumes based on UxC’s “Ux Weekly” Volume 39-28 (dated 14 July 2025)
18. Mid point UxC and TradeTech historical prices over last 5 years. From 29 June 2020 to 30 June 2025
19. UxC Uranium Market Outlook, Q4 2024 – 2022 to 2024 figures
20. UxC Uranium Market Outlook, Q4 2024. Based on uncovered uranium requirements in 2025-35





# PALADIN

## PALADIN INVESTOR RELATIONS

### Head Office

Paula Raffo

T: +61 8 9423 8100

E: [paula.raffo@paladinenergy.com.au](mailto:paula.raffo@paladinenergy.com.au)

### Canada

Bob Hemmerling

T: +1 250-868-8140

E: [bob.hemmerling@paladinenergy.ca](mailto:bob.hemmerling@paladinenergy.ca)

## MEDIA

### Head Office

Anthony Hasluck

Paladin Corporate Affairs

T: +61 438 522 194

E: [anthony.hasluck@paladinenergy.com.au](mailto:anthony.hasluck@paladinenergy.com.au)

### Canada

Ian Hamilton

FGS Longview

T: +1 905 399 6591

E: [ian.hamilton@fgslongview.com](mailto:ian.hamilton@fgslongview.com)