

ACCELERATE ADVANCES DUAL GROWTH STRATEGY

High-Impact Dual Gold and Manganese Portfolio in Tier 1 WA Mining Districts

HIGHLIGHTS

- **Projects strategically located near established infrastructure and processing sites, delivering faster exploration upside and low-capex development potential**
- **Balagundi Gold Project, 15km east of Kalgoorlie, hosts a growing high-grade gold system with standout historical intercepts¹: 45m @ 1.35 g/t Au from 24 to EOH and 21m @ 1.45 g/t Au from 23m, and 6m @ 1.47 g/t Au from 114m**
- **Woodie Woodie North Manganese Project, near the operating Woodie Woodie Mine, with exceptional rock-chip results up to 57.3% Mn at Gingarrigan² and 59.4% Mn at El Largo³ confirming new high-grade manganese areas**
- **Dual growth strategy increases leverage to both near-term gold discoveries plus district-scale manganese development potential**
- **Strong commodity fundamentals and infrastructure advantages support low-capex pathways across both project hubs**
- **Experienced manganese specialist Vincent Algar appointed Technical Consultant to drive accelerated exploration and business development**

Accelerate Resources Limited (ASX: AX8) (“Accelerate” or “the Company”) is pleased to provide an update on its corporate strategy, which is focused on advancing two high-quality project hubs in Western Australia targeting gold and manganese.

Accelerate’s strategy is centred on unlocking value through exploration success by identifying high-grade mineral systems located in established mining districts with existing nearby processing facilities. Both Projects allow targeting of low-capex development pathways through toll treatment at nearby operating facilities.

Accelerate’s “One Strategy – Two Commodities” platform is focused on:

- Balagundi Gold Project – Eastern Goldfields, WA
- Woodie Woodie North Manganese Project – East Pilbara, WA

Accelerate Resources CEO Luke Meter commented *“Implementation of our strategy offers shareholders immediate exposure to an emerging gold camp in the Kalgoorlie district with*

¹ ASX Announcement: AX8 27/01/2026

² ASX Announcement: AX8 20/11/2025

³ ASX Announcement: AX8 16/02/2026

active drilling and resource growth potential AND a strategic manganese project in the East Pilbara with existing Mineral Resources and district-scale exploration upside.

By a disciplined expenditure approach, centred on exploration success, we can systematically de-risk the projects and add value to shareholders.

We have multiple exploration programs planned across both project hubs and expect to deliver sustained news flow and continued technical advancement throughout 2026.”

Commodity Value Proposition- Gold and Manganese

Accelerate’s focus on **gold and manganese** reflects the strong value potential of the high-grade mineral systems observed on the Company licences. Both commodities rank above iron ore and copper on an in-situ value-per-tonne basis, providing the Company with two independently compelling value drivers within its “One Strategy - Two Commodities” platform.

Recent commodity comparisons demonstrate the significant in-situ value potential of both projects relative to other major commodities, including iron ore and copper (Figure 1).

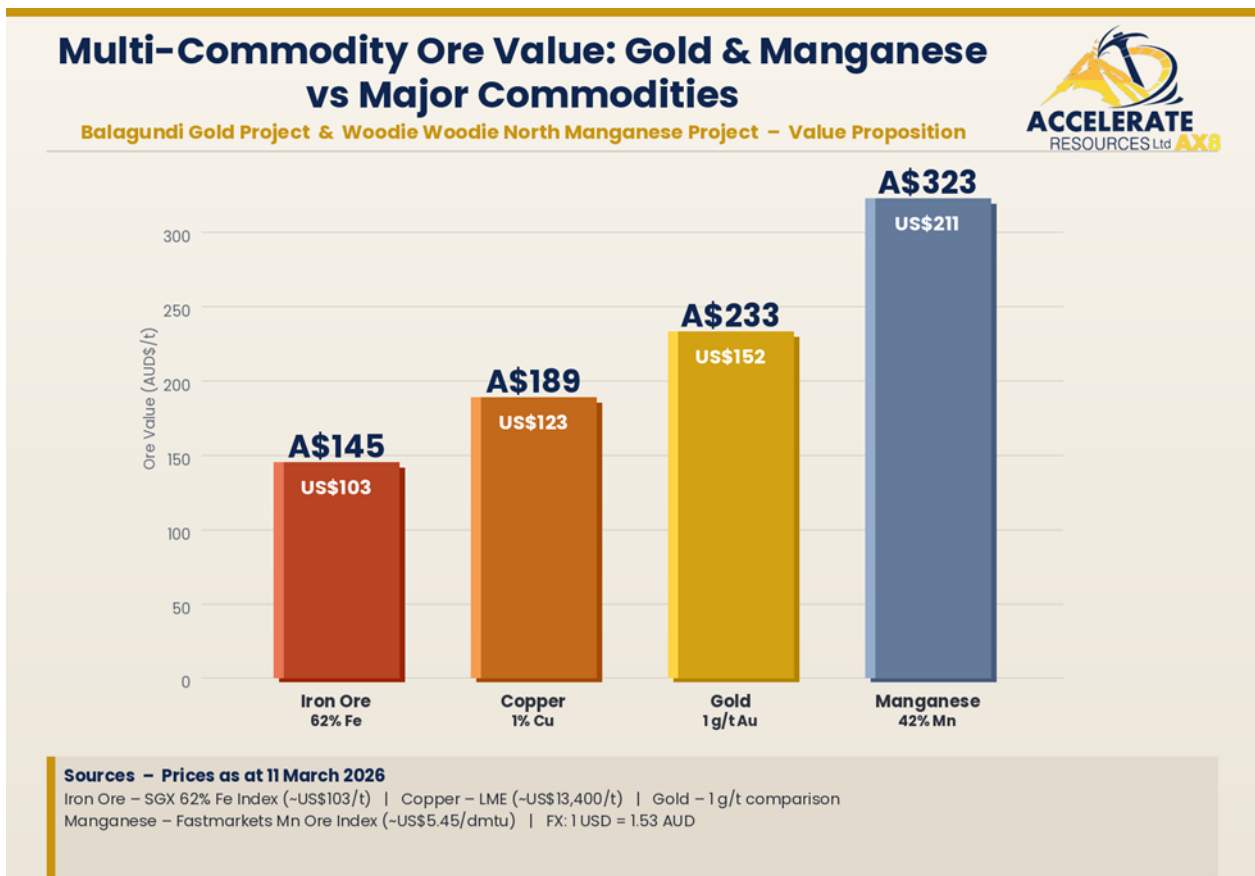


Figure 1: Gold & Manganese Ore Value Proposition

Figure 1 uses the current commodity price benchmarks⁴:

Commodity	Approximate Value per tonne
<i>Iron Ore (62% Fe)</i>	~A\$145/t
<i>Copper (1% Cu)</i>	~A\$189/t
Gold (1 g/t Au)	~A\$233/t
Manganese (42% Mn)	~A\$323/t

This value comparison highlights the attractive economics of identifying high-grade mineralisation in established mining districts with access to infrastructure and processing pathways.

At **Balagundi**, Accelerate is targeting high-grade gold in a structurally controlled system located just 15km east of Kalgoorlie, surrounded by established mining infrastructure and multiple operating gold mills. This setting provides potential future toll treatment pathways and lower-capital development options should economic resources be defined. Recent drilling success at Paris Gift and the new Delta Trend supports the emergence of a broader gold camp with scale potential.

At **Woodie Woodie North**, Accelerate is targeting high-grade manganese in one of the world's premier manganese districts. The Project is located just north of the operating Woodie Woodie manganese mine, near existing regional infrastructure and within trucking distance of Port Hedland, supporting a potential pathway to Direct Shipping Ore (DSO) development should economic mineralisation be delineated. This is reinforced by the Company's drilling and recent high-grade rock chip results from multiple prospects identified since acquisition in 2021.

Strengthening Technical Capacity

Accelerate has recently strengthened its technical capability with the appointment of experienced mining industry executive Mr Vincent Algar as Technical Consultant, bringing extensive experience in manganese exploration and business development within the Woodie Woodie district.

Mr Algar will work with the Accelerate technical team to support exploration targeting, geological interpretation and business development initiatives across the Woodie Woodie North Project, including the recently identified Gingarrigan and El Largo manganese corridors.

Two Commodity Focus – Project Information

Balagundi Gold Project – Emerging Gold Camp Near Kalgoorlie

⁴ Sources: Please refer to Figure 1. Source date 11/03/2026

The Balagundi Gold Project, located approximately **15km east of Kalgoorlie** (Figure 2), and sits within the world-class Norseman–Wiluna greenstone belt adjacent to the Kanowna Belle Mine and KCGM Super Pit, with multiple operating gold mills providing potential toll treatment pathways.

Exploration to date has confirmed gold mineralisation along the **Paris Gift Trend over approximately 300 metres of strike**⁵, while the recent discovery of the **Delta Trend** identified a new undercover gold structure extending over **150 metres and open in all directions**⁶, pointing to a broader structurally controlled gold camp with scale potential.

Historic drilling at Balagundi has returned significant intercepts including¹ **45m @ 1.35 g/t Au** from 24m to EOH (BHR042), **21m @ 1.45 g/t Au** from 23m (NBR027), **6m @ 1.47 g/t Au** from 114m (25BGRC006).

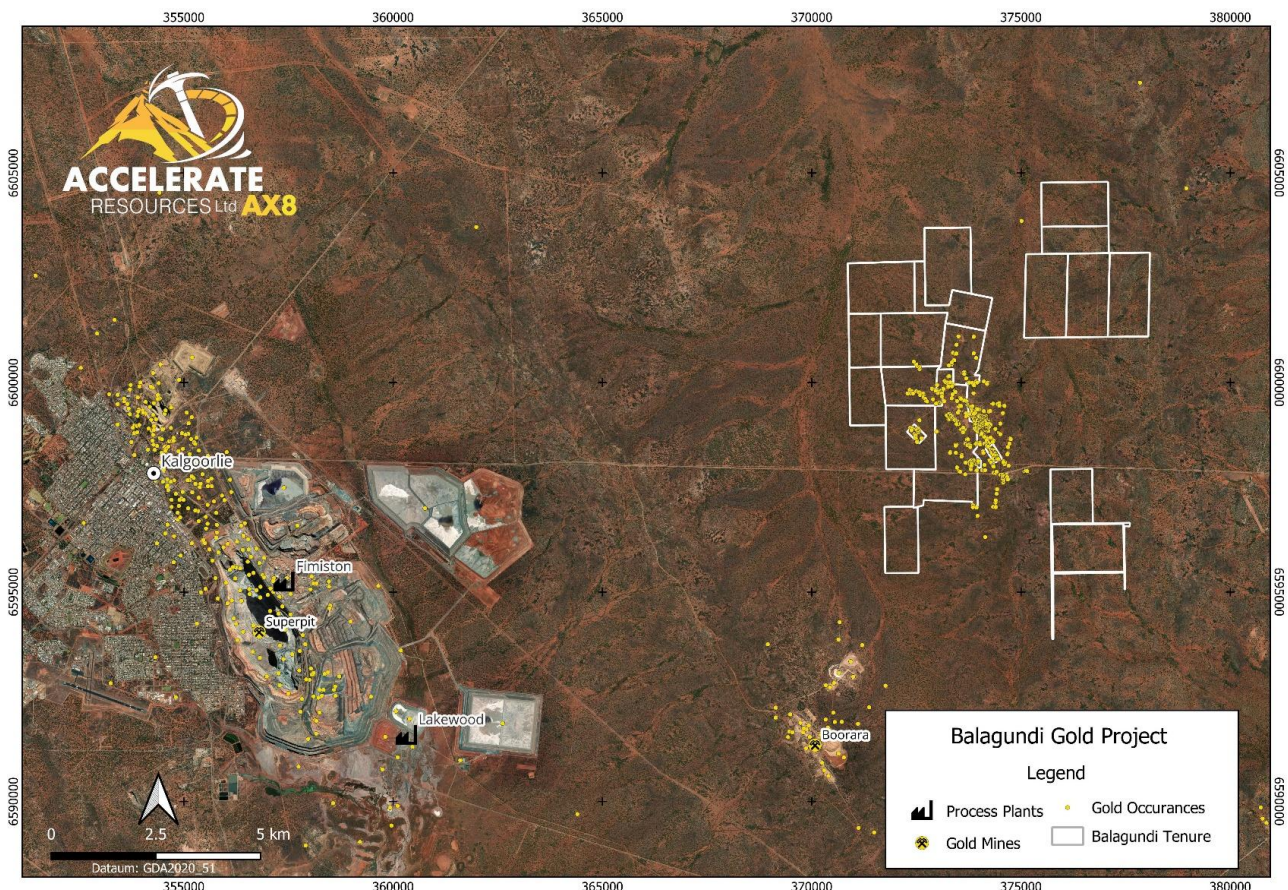


Figure 2: Balagundi Gold Project – Strategically located near Kalgoorlie mining infrastructure

Woodie Woodie North Manganese Project - Strategic Project in a Proven High-Grade District

The Woodie Woodie North Manganese Project, located in the East Pilbara of Western Australia and is located directly north of the operating Woodie Woodie Manganese Mine (Figure 3), one of the world’s premier high-grade manganese operations since the 1950’s years. Exploration

⁵ ASX Announcement 27/1/2026

⁶ ASX Announcement 13/2/2026

completed by Accelerate has defined initial Inferred Mineral Resources of **1.2Mt at 19.1% Mn⁷**, with multiple additional Exploration Targets of **5.3Mt – 10.7Mt grading 10–19% Mn⁸**, highlighting the potential scale of the system.

These initial resources do not include the significant exploration potential identified at Gingarrigan and El Largo Corridors⁹ as these are located on new tenements only recently granted.

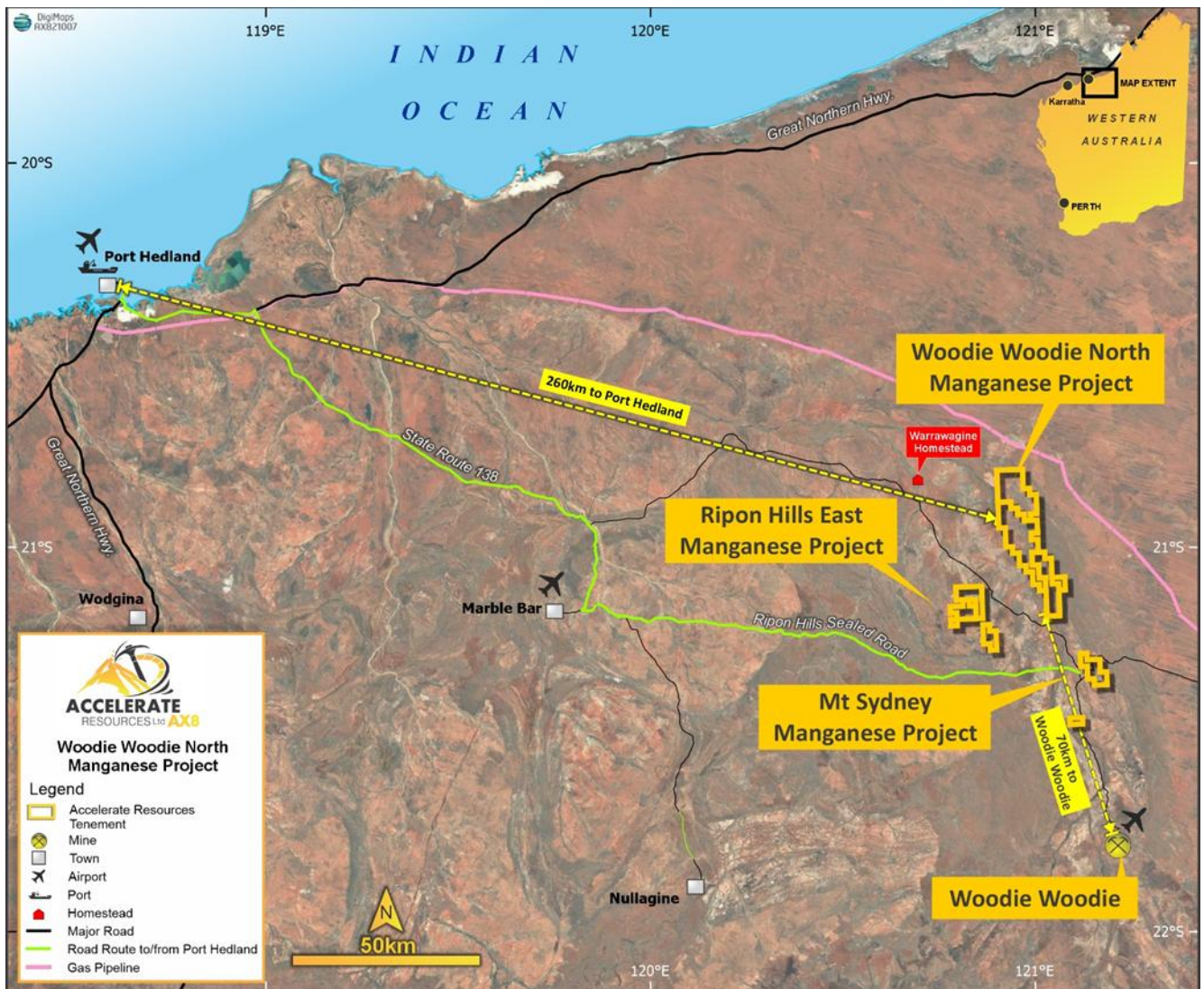


Figure 3: Woodie Woodie North Manganese Project strategically located near Woodie Woodie process facility and sealed roads to Port Hedland bulk export hub facility.

⁷ ASX Announcement: AX8 30/11/2023

⁸ Cautionary Statement: The potential quantity and grade of any Exploration Target described in this announcement is conceptual in nature. There has been insufficient exploration to estimate a Mineral Resource in accordance with the JORC Code (2012), and it is uncertain if further exploration will result in the estimation of a Mineral Resource. The Exploration Target is not being reported as part of a Mineral Resource or Ore Reserve. Please refer to Appendix 3 for additional clarification on the Exploration Target.

⁹ ASX Announcements 20/11/25, 26/02/26

Recent rock chip sampling at Woodie Woodie North returned up to 57.3% Mn from the Gingarrigan Corridor and up to **59.4% Mn** from the El Largo Corridor, highlighting multiple high-grade manganese occurrences within a centralised project area.

These corridors (see Fig 4) represent previously underexplored structural trends within the broader Woodie Woodie mineralised system and demonstrate the potential for additional high-grade manganese discoveries beyond the currently defined resources.

The Company has had significant drilling success at Woodie Woodie North since acquisition of tenements began in 2021¹⁰, across a commanding **434km²** of tenure across 42km of strike in this world-class manganese province.

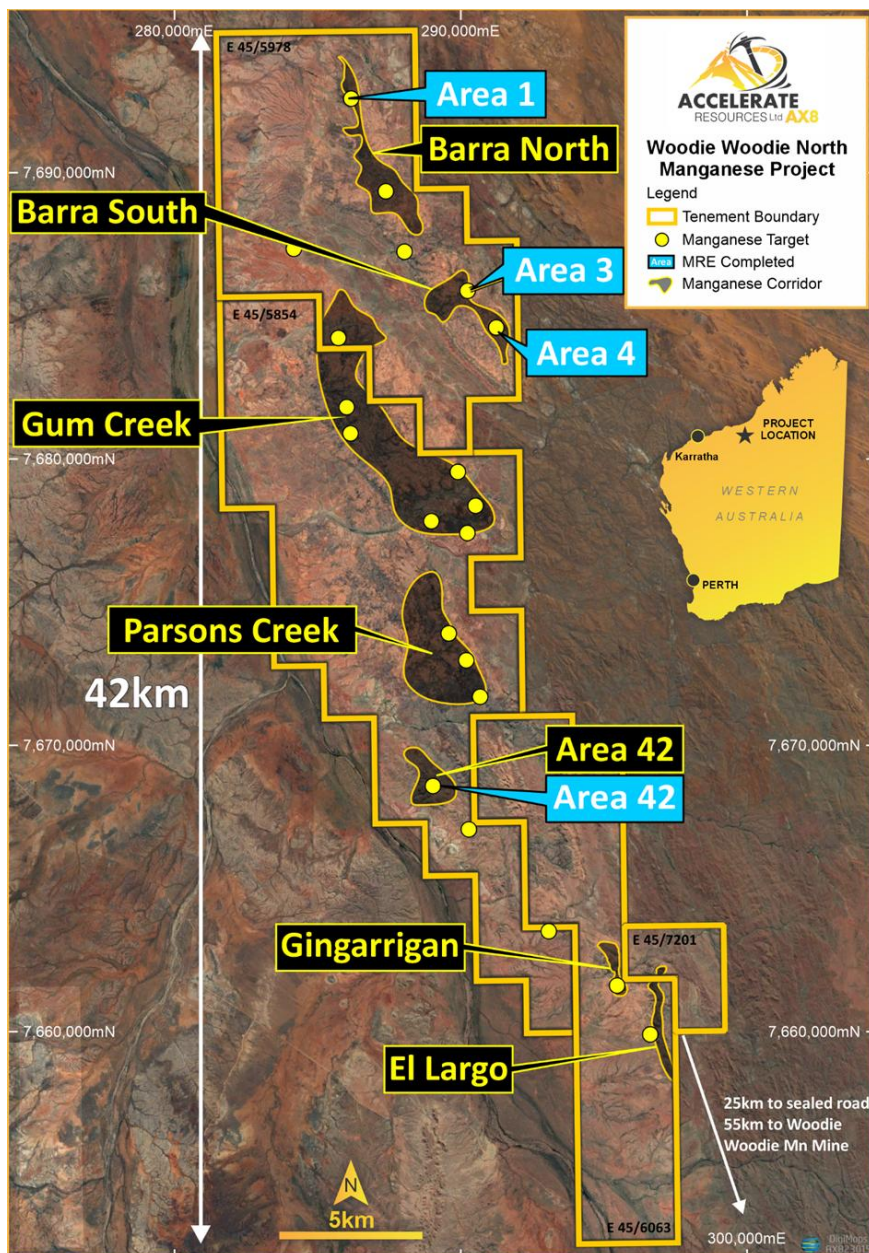


Figure 4: Manganese Corridor location Map with Mineral Resource estimates highlighted in blue

¹⁰ Refer ASX Announcements: 16/02/2026, 20/11/2025, 4/10/2023, 7/8/2023, 16/02/2023 and 9/2/2023

Positioning Accelerate for Growth

Accelerate will focus on its two-hub WA growth strategy, which offers shareholders immediate exposure to multiple exploration programs planned across both project hubs, Accelerate expects to deliver sustained news flow and continued technical advancement throughout 2026.

Planned near-term activities include;

- AC Drilling at the high priority Balagundi Fluffy Prospect
- RC Drilling results, interpretation and follow-up at Paris Gift, Delta Prospects at the Balagundi Gold Project
- Review and target generation for new drill sites at Gangarrigan, El Lago, Area42 at the Woodie Woodie North Manganese Project.

Planned near term news flow includes:

Anticipated Date	Announcement
Early April	Balagundi Exploration Update
Early April	Woodie Woodie North Exploration Update
Mid April	Balagundi RC Results
Late April	Balagundi AC Results

END

This announcement has been authorised for release by the Board of Accelerate Resources Limited.

For further information, please contact:

Luke Meter

Chief Executive Officer

E: lukem@ax8.com.au | P: +61 8 6248 9663 | W: www.ax8.com.au

Related ASX Announcements

This release contains information extracted from the following market announcements which are available on the Company website www.ax8.com.au

- 16/02/2026: AX8 – Exceptional High-Grade Manganese Discoveries over 4km at Woodie Woodie North
- 13/02/2026: AX8 – Aircore Drilling Reveals New Gold Trend at Balagundi
- 27/01/2026: AX8 – First AX8 Drilling at Balagundi Defines Emerging Gold Shoot on Paris Gift Trend
- 20/11/2025: AX8 – High Grade Manganese in New Sites at Woodie Woodie North
- 23/10/2025: AX8 – Balagundi Gold Project Expanded with Iron Bound Earn-In
- 24/09/2025: AX8 – Accelerate Boosts Gold Portfolio with Earn-in of Balagundi Project near Kalgoorlie
- 22/10/2025: AX8 – High Grade Gold in Balagundi Rock Chip Sampling
- 30/11/2023: AX8 – Maiden Manganese Mineral Resource Supports Growth Potential
- 04/10/2023: AX8 – Woodie Woodie North Manganese Drilling Results.
- 07/08/2023: AX8 – Drilling Increases Scale of Manganese Zone at WWN
- 16/02/2023: AX8 – Regional-Scale Manganese Corridors Confirmed
- 09/02/2023: AX8 – High Grade Manganese Drill Results from Woodie Woodie North

Competent Person Statements

The information in this report that relates to Mineral Resources (including the Mineral Resources Statement) is based on and fairly represents information and supporting documentation compiled by Ms Felicity Hughes. The Mineral Resource Statement as a whole has been approved by Ms Hughes, who is an independent consultant at ERM Ltd who was engaged by Accelerate Resources Ltd and is a Member of the Australian Institute of Geoscientists (AIG) and the Australasian Institute of Mining and Metallurgy (AusIMM).

Ms Hughes has sufficient experience relevant to the style of mineralisation and type of deposit under consideration and to the activity which they are undertaking to qualify as a Competent Person as defined in the 2012 edition of the Australasian Code for the Reporting of Exploration Results, Mineral Resources and Ore Reserves (JORC Code). Ms Hughes has provided her prior written consent to the form and context in which the Mineral Resources Statement appears in this Report.

The information in this report which relates to the Woodie Woodie North Mineral Resources was extracted from the Company's ASX announcement dated 30 November 2023 which is available to view on the Company's website. The Company confirms that it is not aware of any new information or data that materially affects the information included in the original market announcement and that all material assumptions and technical parameters underpinning the estimates in the original market announcement continue to apply and have not materially changed. The Company confirms that the form and context in which the Competent Persons' findings are presented have not materially changed with the last review completed on 10th February 2025.

The information in this report that relates to the Woodie Woodie North Exploration Target is based on and fairly represents information and supporting documentation compiled by Mr Matthew Clark. The

Exploration Target has been approved by Mr Clark, who is an independent consultant at ERM Ltd who was engaged by Accelerate Resources Ltd and is a Member of the Australian Institute of Mining and Metallurgy (AusIMM). Mr Clark has sufficient experience relevant to the style of mineralisation and type of deposit under consideration and to the activity which they are undertaking to qualify as a Competent Person as defined in the 2012 edition of the Australasian Code for the Reporting of Exploration Results, Mineral Resources and Ore Reserves (JORC Code). Mr Clark has provided his prior written consent to the form and context in which the Manganese Exploration Target Statement appears in this Annual Report.

Information in this release related to Exploration Results (Manganese) is based on information compiled by Dr Joseph Drake-Brockman. He is a qualified geologist and a Fellow of the Australian Institute of Mining and Metallurgy (AusIMM). Dr Drake-Brockman has sufficient experience, which is relevant to the style of mineralisation and type of deposit under consideration and to the activity being undertaken to qualify as a Competent Person as defined in the 2012 Edition of the 'Australasian Code for Reporting of Exploration Results, Mineral Resources, and Ore Reserves'. Dr Drake-Brockman was employed by Drake-Brockman Geoinfo Pty Ltd and was under contract to the Company. The Company has granted Dr Drake-Brockman performance-based share options. Dr Drake-Brockman consents to the inclusion in this release of the matters based on his information in the form and context in which it appears.

Information in this release related to Balagundi Exploration Results is based on information compiled by Mr Luke Meter. Mr Meter is a qualified geologist and a Member of the Australian Institute of Geoscientists (AIG) and the Australian Institute of Mining and Metallurgy (AusIMM). Mr Meter has sufficient experience, which is relevant to the style of mineralisation and type of deposit under consideration and to the activity being undertaken to qualify as a Competent Person as defined in the 2012 Edition of the 'Australasian Code for Reporting of Exploration Results, Mineral Resources, and Ore Reserves'. Mr Meter is employed by Accelerate Resources as its Chief Executive Officer and consents to the inclusion in this release of the matters based on his information in the form and context in which it appears

Forward Looking Statements

Statements contained in this release, particularly those regarding possible or assumed future performance, costs, dividends, production levels or rates, prices, resources, reserves or potential growth of Accelerate Resources Limited, are, or may be, forward looking statements. Such statements relate to future events and expectations and, as such, involve known and unknown risks and uncertainties. Actual results and developments may differ materially from those expressed or implied by these forward-looking statements depending on various factors.